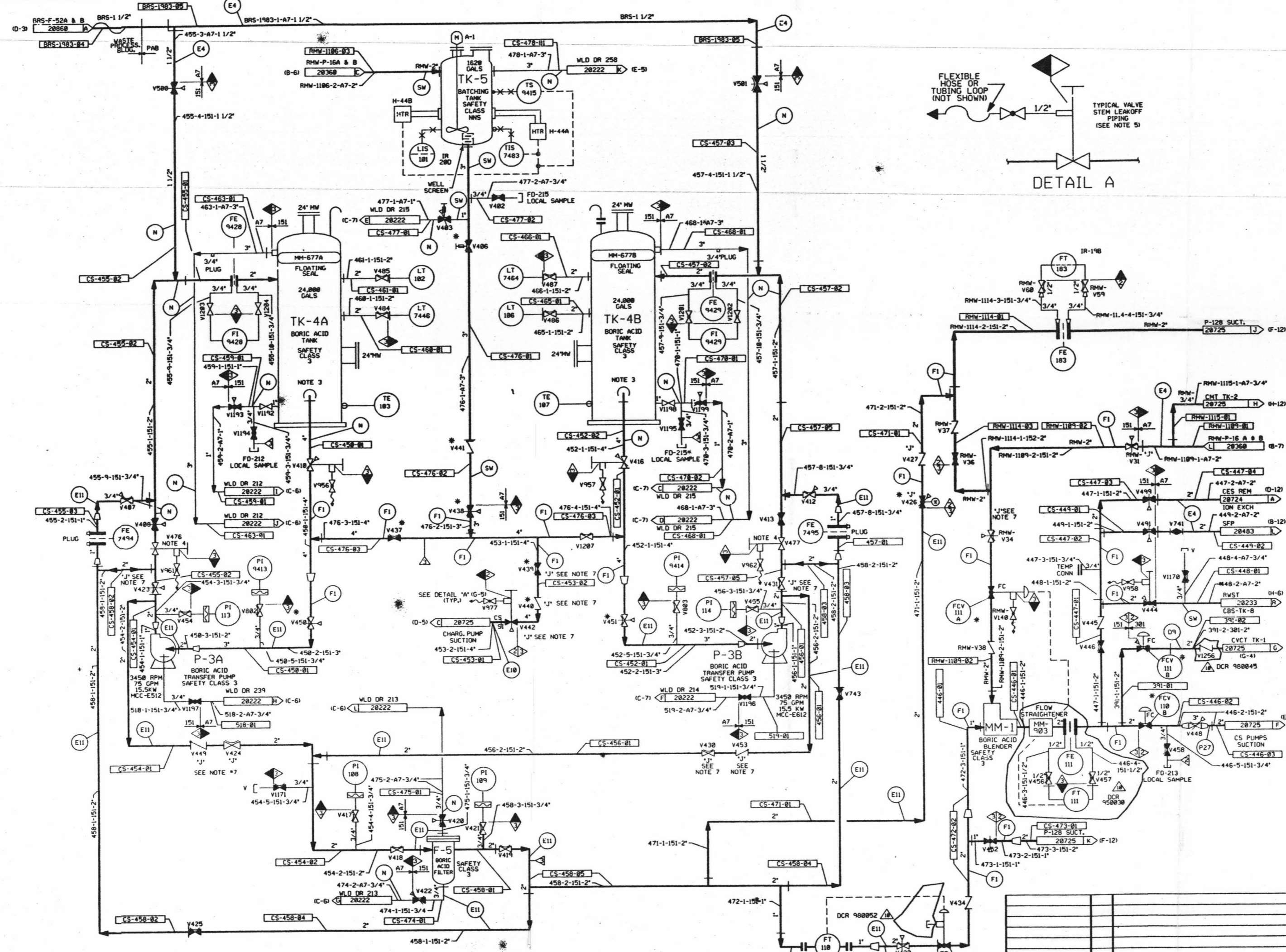


FOR INFORMATION ONLY

PID-1-CS-D20729



FOR PAID REFERENCE DRAWINGS, SYMBOLS AND ABBREVIATIONS REFER TO DRAWINGS PAID - LEGEND 1 AND PAID - LEGEND 2

### LEGEND

| TEST  | DESIGN PRESSURE  | TEST PRESSURE | MIN. TEST TEMP | TEST MEDIUM |            |
|-------|------------------|---------------|----------------|-------------|------------|
| ○ D9  | INTEGRITY TEST   | 248 PSIG      | 308/318 PSIG   | 35          | D.J.M.T.R. |
| ○ E4  | INTEGRITY TEST   | 138 PSIG      | 225/245 PSIG   | 35          | D.J.M.T.R. |
| ○ E11 | INTEGRITY TEST   | 208 PSIG      | 308/318 PSIG   | 35          | D.J.M.T.R. |
| ○ E14 | INTEGRITY TEST   | 175 PSIG      | 218/232 PSIG   | 35          | D.J.M.T.R. |
| ○ F1  | INTEGRITY TEST   | 158 PSIG      | 187/199 PSIG   | 35          | D.J.M.T.R. |
| ○ P27 | INTEGRITY TEST   | 75 PSIG       | 94/100 PSIG    | 35          | AIR/W      |
| ○ SM  | STANDING WATER   |               |                |             |            |
| ○ IS  | INITIAL SERVICE  |               | N.O.P.         |             |            |
| ○ E18 | INTEGRITY TEST   | 228 PSIG      | 275/291.5 PSIG | 35          | D.J.M.T.R. |
| ○ N   | NO TEST REQUIRED |               |                |             |            |

NOTES:  
 A. VENTS & DRAINS WITH CAPS/BLIND FLANGES ETC. (ASME CL.28.3.1) SHALL BE TESTED TO THE LAST ISOLATION VALVE.

- NOTES:
1. WORK THIS Dwg WITH 28728 & 28722 THRU 28726.
  2. ALL LINES, EQUIPMENT, COMPONENTS AND INSTRUMENTS HAVE SYSTEM PREFIX UNLESS NOTED OTHERWISE.
  3. ALL BORIC ACID & BATCHING TANK EQUIP & PIPING SHOWN IS LOCATED IN AREA MAINTAINED AT A CONTROLLED TEMPERATURE.
  4. VALVE IS LOCKED INTO POSITION DURING OPERATIONAL TESTING TO LIMIT PUMP RUNOUT TO 75 GPM WHEN TRANSFERRING BATCHING TANK CONTENTS TO BORIC ACID TANK.
  5. REFER TO Dwg VSL-28774 FOR VALVE LEAKOFFS.
  6. CLEANLINESS CLASS "B"
  7. THE IDENTIFICATION "J" NEAR A VALVE DENOTES THAT VALVE IS DESIGNATED FOR INSERVICE TESTING.
  8. DELETED
  9. DELETED
  10. SYSTEM DESCRIPTION NO. - NAH/NCH-282
  11. \* INDICATES VALVE SUPPLIED BY WESTINGHOUSE
  12. DELETED

PORTIONS OF THIS DRAWING ARE NUCLEAR SAFETY RELATED

| NO  | DATE     | BY   | CHK  | APP  | REV   | DESCRIPTION            |   |
|-----|----------|------|------|------|---|------------------------|---|
| 10  | 4/16/99  | DWS  | RWS  | AW   | INCORP DCR 980952 DCH/RR                          |                        |   |
| 9   | 9/16/97  | BCL  | MPW  | BAW  | INCORP DCR 95-38 DCH/RR & REINCORPORATE DCR 95-88 |                        |   |
| 8   | 8/13/97  | MPW  | DWS  | FAC  | INCORP DCR 95-38 DCH/RR                           |                        |   |
| 7   | 10/20/97 | DWS  | HRB  | BCL  | INCORP DCR 980073 CAP'D & I                       |                        |   |
| 6   | 4/28/92  | HRB  | DWS  | RRB  | INCORP HMOD 91-515 CAB                            |                        |   |
| 5   | 12/16/91 | FCH  | RMC  | HRB  | BCL   | INCORP HMOD 91-515 CAB |   |
| 4   | 3/16/89  | HRB  | RMC  | GPM  | APL   | HJT                    | REV'D NOTE 6 & 7. NO LEGEND NOTE A (SFP) IS REQUIRED. INSTEAD OF THE DETERMINE ISO NUMBER LINE NUMBER PER SECTION 2.2 TO BE PLACED AT THE OPERATOR SYMBOL & ISO BOUNDARY LOCATION AS SHOWN IN THE LEGEND. REV'D NOTE 5 TO REFLECT AS-BUILT OPERATOR SYMBOL & ISO BOUNDARY LOCATION. REV'D NOTE 4 TO REFLECT AS-BUILT OPERATOR SYMBOL & ISO BOUNDARY LOCATION. REV'D NOTE 3 TO REFLECT AS-BUILT OPERATOR SYMBOL & ISO BOUNDARY LOCATION. REV'D NOTE 2 TO REFLECT AS-BUILT OPERATOR SYMBOL & ISO BOUNDARY LOCATION. REV'D NOTE 1 TO REFLECT AS-BUILT OPERATOR SYMBOL & ISO BOUNDARY LOCATION. |
| 3   | 3/25/85  | GPM  | RMC  | DWS  | BCL   | PAG                    |   |
| 2   | 10/6/86  | JCM  | WES  | HAP  | BCL   | HRB                    | INCORP ECA'S 88/11837A & 88/118448A   |
| 1   | 6/22/86  | BCL  | OPD  | WRD  | BCL   | PHH                    | REVISED TO REFLECT AS-BUILT OPERATOR SYMBOL & ISO BOUNDARY LOCATION. REV'D NOTE 5 TO REFLECT AS-BUILT OPERATOR SYMBOL & ISO BOUNDARY LOCATION. REV'D NOTE 4 TO REFLECT AS-BUILT OPERATOR SYMBOL & ISO BOUNDARY LOCATION. REV'D NOTE 3 TO REFLECT AS-BUILT OPERATOR SYMBOL & ISO BOUNDARY LOCATION. REV'D NOTE 2 TO REFLECT AS-BUILT OPERATOR SYMBOL & ISO BOUNDARY LOCATION. REV'D NOTE 1 TO REFLECT AS-BUILT OPERATOR SYMBOL & ISO BOUNDARY LOCATION.  |
| REV | DATE     | DSGN | DRWN | CHKD | CODE  | SES                    | DESCRIPTION   |

**North Atlantic** Energy Service Corporation

CHEMICAL & VOLUME CONTROL SYS.  
 BORIC ACID  
 DETAIL

SEABROOK STATION  
 PID- 1-CS-D20729

| REV              | DATE | NO                                      | DESCRIPTION |
|------------------|------|---|-------------|
| 9763-F-980144    | 2    | SPENT FUEL POOL COOLING & CLEAN-UP MITD |             |
| 9763-F-980142    | 3    | CVCS BORIC ACID MITD                    |             |
| 9763-F-895817    | 12   | SPENT FUEL POOL COOLING & CLEAN-UP      |             |
| 9763-F-895814    | 16   | CVCS BORIC ACID P & ID                  |             |
| REF. DRAWING NO. | REV  | TITLE                                   |             |

D-20