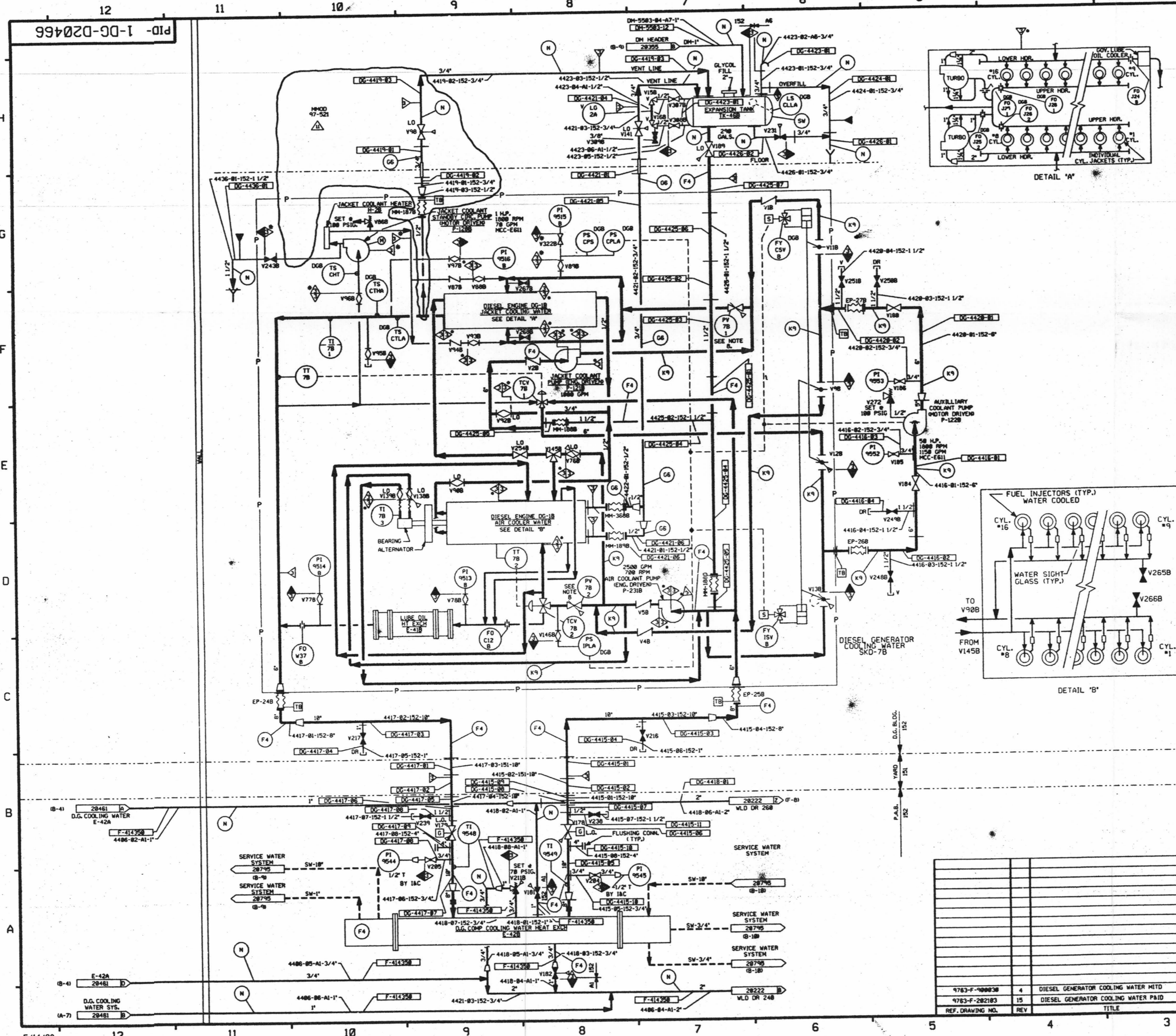


FOR INFORMATION ONLY



FOR PAID REFERENCE DRAWINGS, SYMBOLS AND ABBREVIATIONS REFER TO DRAWINGS PAID - LEGEND 1 AND PAID - LEGEND 2

LEGEND

TEST BOUNDARY	DESIGN PRESSURE	TEST PRESSURE	MIN. TEST TEMP. °F	TEST MEDIUM
IS	150 PSIG	225/245 PSIG	35	WATER
IS	70 PSIG	87.5/93.75 PSIG	35	WATER
IS	50 PSIG	62.5/66 PSIG	35	WATER
IS	100 PSIG	150/165 PSIG	35	WATER

NOTES:
 A. VENTS & DRAINS WITH CAPS/BLIND FLANGES ETC. ASME CL.2 AND 3. NWS. SHALL BE TESTED TO THE LAST ISOLATION VALVE.

- NOTES:
1. WORK THIS DRAWING WITH DRAWINGS 28456, 28457, 28461, 28463, 28464, 28465 & 28467.
 2. ALL LINES, EQUIPMENT, COMPONENTS AND INSTRUMENTATION HAVE SYSTEM PREFIX DG, UNLESS NOTED OTHERWISE.
 3. DELETED
 4. VENT/DRAIN & TEST CONN. CODE AND SAFETY CLASS BREAKS ARE AT THE DOWN STREAM END OF THE OUTER ISOLATION VALVE PER 1-WY-085111, UNLESS NOTED OTHERWISE.
 5. CLEANLINESS CLASS "C" FOR DG SYSTEM.
 6. SD NO. IS SD-18
 7. Δ INDICATES REVISION LEVEL.
 8. THIS VALVE HAS BEEN STAKED IN A PRE-DETERMINED THROTTLED POSITION.

PORTIONS OF THIS DRAWING ARE
NUCLEAR SAFETY RELATED

NO.	DATE	BY	CHKD	APP'D	DESCRIPTION		
11	6/1/88	DR			INCRP MHOOD 97-521 DCN 08		
10	10/30/88	BCL			INCRP DCR 94812 CAP & 01- & INCRP NCR 74/2530A		
9	1/28/88	DWS			INCRP MHOOD 930545 CAP & 01		
8	5/18/84	DWS			PEINCRP MHOOD 948585 CAP & 01		
7	5-8-84	DWS			INCRP MHOOD 94-586 CAP & 4		
6	10/22/84	MWB			INCRP MHOOD 92-586 CAP & 01		
5	4/21/82	MWB			INCRP MHOOD 91-515 CAP & 91-622 CAP		
4	12/2/88	HRB			INCRP DCR 88-29 CAP REVISION LEGEND NOTE 4 PER 9753-F-080808 AND DELETED 1.15" BREAK AND SYSTEM CLASS DESIGNATION.		
3	8/31/88	GPH			INCRP DCR 88-29 CAP REVISION LEGEND NOTE 4 PER 9753-F-080808 AND ANSI B31.1 1977-SEC 137.1.2E. 150 NDS & NOTE 4 ADDED REDUCER PER ISOLATED TEST BOUNDARY'S & NWS-1 CL BOUNDARY, 150 NUMBER		
2	2/18/87	HRJ			REVISED INSTR. TAG NO. PER AS-BUILT CONDITION, REMOVED CHANGE ITEM 1 DELETED NOTE 4		
1	10/3/86	HAP			DELETED BY DESIGNATION FROM NOTE 1. ADDED NOTE 4 & 5 & INCRP ECA 89-0808 REV. DWS CONT. REVISED PER PIPING ERECTION 150 REV. TO CLARIFY QUALIFICATION OF SYSTEMS ADDED (DITD) REFERENCE DRAWINGS.		
0	8/28/86	DWS			ISSUED FOR OPERATIONS		
REV	DATE	DSGN	DRWN	CHKD	CDE	SES	DESCRIPTION

North Atlantic Energy Service Corporation

DIESEL GENERATOR COOLING WATER SYSTEM TRAIN 'B' DETAIL

PID- 1-DG-D20466

SEABROOK STATION

D-29