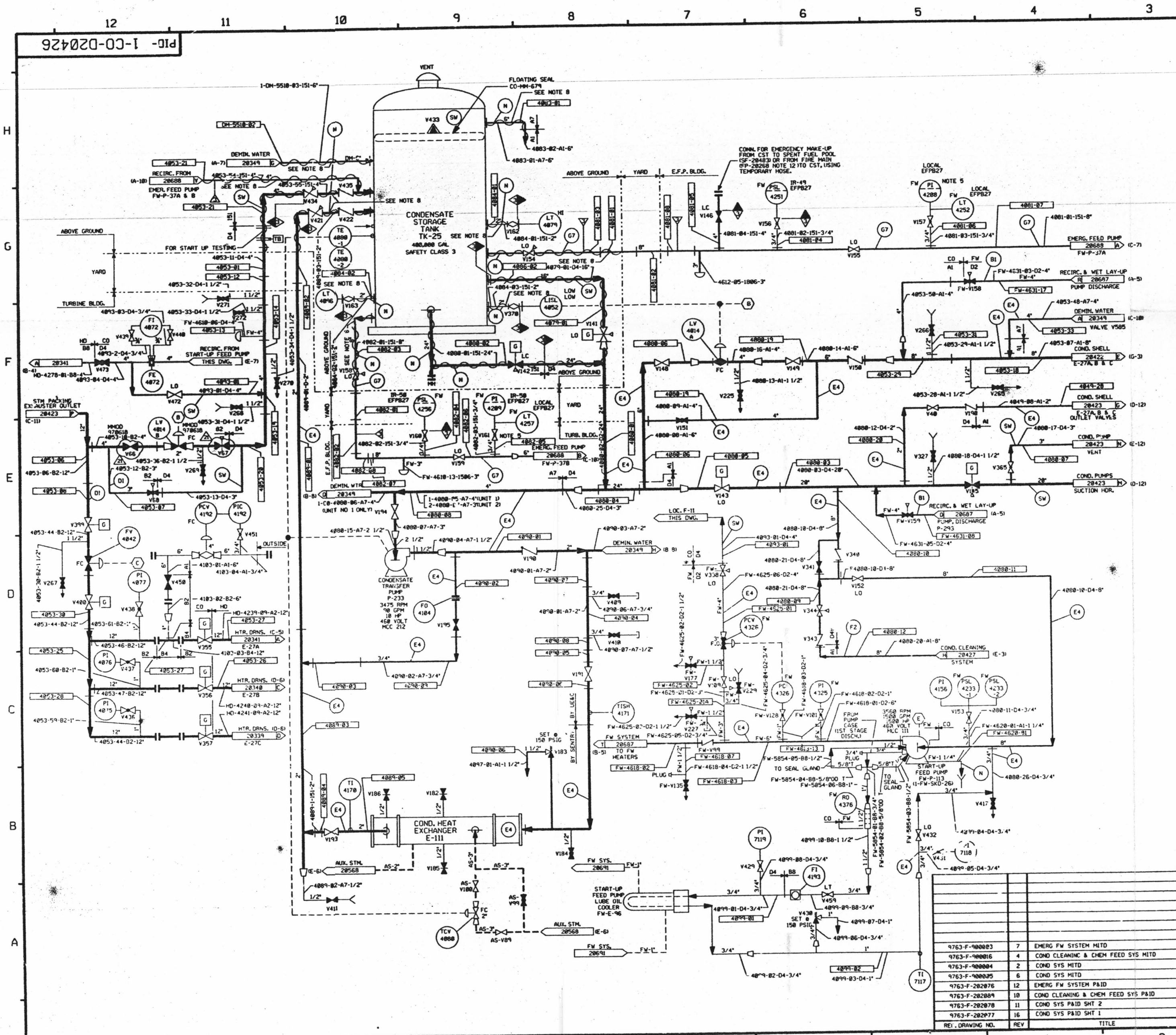


924202-03
PID- 1-CO-D20426



FOR PAID REFERENCE DRAWINGS, SYMBOLS AND ABBREVIATIONS REFER TO DRAWINGS PAID - LEGEND 1 AND PAID - LEGEND 2

LEGEND

DESIGN	TEST	MDL TEST	TEST
MEASURE	PRESSURE	TEMP	F. MEDIUM
TB	TEMPORARY TEST BOUNDARY		
T	TEST BOUNDARY		
N	NO TEST REQUIRED		
G7	INTEGRITY TEST	14 PSIG	18/19 PSIG 35 D.M. WTR
B1	INTEGRITY TEST	15 1500 PSIG	2250/2305 PSIG 35 D.M. WTR
D1	INTEGRITY TEST	15 600 PSIG	900/954 PSIG 35 D.M. WTR
E4	INTEGRITY TEST	15 150 PSIG	225/245 PSIG 35 D.M. WTR
F2	INTEGRITY TEST	15 100 PSIG	150 /170 PSIG 35 D.M. WTR
G2	INTEGRITY TEST	15 50 PSIG	75/95 PSIG 35 D.M. WTR
I5	INITIAL SERVICE		N.D.P.
SM	STANDING WATER		

NOTES:
A. VENTS & DRAINS WITH CAPS/BLIND FLANGES ETC. (UNLESS CL 2 & 3) SHOULD BE TESTED TO THE LAST ISOLATION VALVE.

- NOTES:
- WORK THIS DRAWING WITH DRAWINGS 20426, 20422, 20423, 20424, 20425 & 20427.
 - ALL LINES, VALVES, EQUIPMENT, COMPONENTS AND INSTRUMENTATION HAVE SYSTEM PREFIX CO, UNLESS NOTED OTHERWISE.
 - ALL LINES, EQUIPMENT, COMPONENTS AND INSTRUMENTS ARE SAFETY CLASS NRS, UNLESS NOTED OTHERWISE.
 - INSTRUMENTATION REFERENCES:
B TO COND HOTWELL, 1-CO-LT-4818, 4811, 4812 DWG 20422.
C TO STEAM PACKING EXHAUSTER VENTURI, 1-CO-FI-4842 ON DWG 20423.
E LUBE OIL PIPING FROM FW-161.
 - REF TEST LOOP DIAGRAM FOR VALVE LD.
 - CLEANLINESS CLASS 'C'.
 - SYSTEM DESCRIPTION NO. IS SD-1.
 - HEAT TRACING HAS BEEN DISCONNECTED AND IS NON-FUNCTIONAL.

PORTIONS OF THIS DRAWING ARE
NUCLEAR SAFETY RELATED

NO.	DATE	BY	CHKD	APPV	DESCR		
21	6/1/99	DWS		RVIS	INCORP MHOOD 970618 DCM 80		
20	1/2/98	DRL		MPW	INCORP MHOOD 96-558 DCM 82		
19	2/3/98	BGS		MPW	INCORP DCR 97-811 DCM 8		
18	6/28/97	MPW		DWS	DCR 92-554 CA 8		
17	2/28/96	DWS		MPW	INCORP MHOOD 94-2574 CA 8		
16	12/22/95	BCL		MPW	INCORP DCR 94-827 C&B		
15	6/24/94	MPW		JWB	INCORP MHOOD 91-639 C&B		
14	3/1/94	MRB		BCL	INCORP MHOOD 92-553 C&B		
13	8/26/93	MRB		BCL	INCORP MHOOD 91-988 C&B, 13		
12	9/19/92	MRB		DWS	INCORP MHOOD 91-515 CA 8 & 91-511 CAI		
11	5/30/91	MRB		JM	INCORPORATED MHOOD 90-488 C&B REVISED LINE NUMBERS PER LEAD 2340 28427A		
10	6/12/90	JM		PHC	INCORPORATED DCR 89-42 CA 83 REVISED INSTR. REFERENCE PER SIS VERIFICATION & CORRECT ISS NUMBER INDEXED SYSTEM NO. 2		
9	3/31/90	MRB		FEB	INCORP DCR 89-37 C&B		
8	3/12/90	MP		FCB	INCORP DCR 89-37 C&B		
7	2/2/89	MRB		RMC	INCORPORATED DCR 88-42 CA 83 REVISED INSTR. REFERENCE PER SIS VERIFICATION & CORRECT ISS NUMBER INDEXED SYSTEM NO. 2 REVISION NOTE 3. LEGEND NOTE 4. CONNL DESCRIPTION (W&B) PIPING TO GROUP DUPLICATION OF ASSOCIATED SYSTEMS & INTERFACES. 4. LOCATION (12/27) ADDED HEAT TRACING FOR RECIRC. LINE TCTEY TO TK-25 PER RE-INTEGRATED E&A REV 08/25/90. INCOMPLETE ITEM DELETED REV 3A AND VALVE V444 PER PAID CORRECT CL B-TIME FOR CLARITY LINE NO. FW-4618-96 DELETED MHOOD 91-511 CAI		
6	9/30/88	GPH		RVC	DELETED REDUNDANT REDUCER & LINE SIZE.		
5	4/18/87	GPH		HW	DELETED MHOOD 87-8888 INCORP E&A 88/11836A		
4	4/1/87	GPH		HW	INCORP DCR 87-8888 INCORP E&A 88/11836A		
3	1/18/87	JDM		JDM	INCORP DCR 87-8888 INCORP E&A 88/11836A		
2	10/29/86	JDM		TAK	INCORP DCR 87-8888 INCORP E&A 88/11836A		
1	9/12/86	BCL		DWS	ITEM REMOVED VALVES (V461) & V452 (SHOW ON DWG PAID) ADDED SEC SYSTEM PREFIX TO PIS (LIMITED IN ERROR)		
REV	DATE	DSGN	DRWN	CHKD	COE	SES	DESCRIPTION

North Atlantic Energy Service Corporation

CONDENSATE SYSTEM
DETAIL

PID- 1-CO-D20426

SEABROOK STATION

REV.	DATE	NO.	REV	TITLE
7		9763-F-000003		EMERG FW SYSTEM MITD
4		9763-F-000016		COND CLEANING & CHEM FEED SYS MITD
2		9763-F-000004		COND SYS MITD
6		9763-F-000035		COND SYS MITD
12		9763-F-202076		EMERG FW SYSTEM PAID
10		9763-F-202079		COND CLEANING & CHEM FEED SYS PAID
11		9763-F-202078		COND SYS PAID SHT 2
16		9763-F-202077		COND SYS PAID SHT 1

D-13