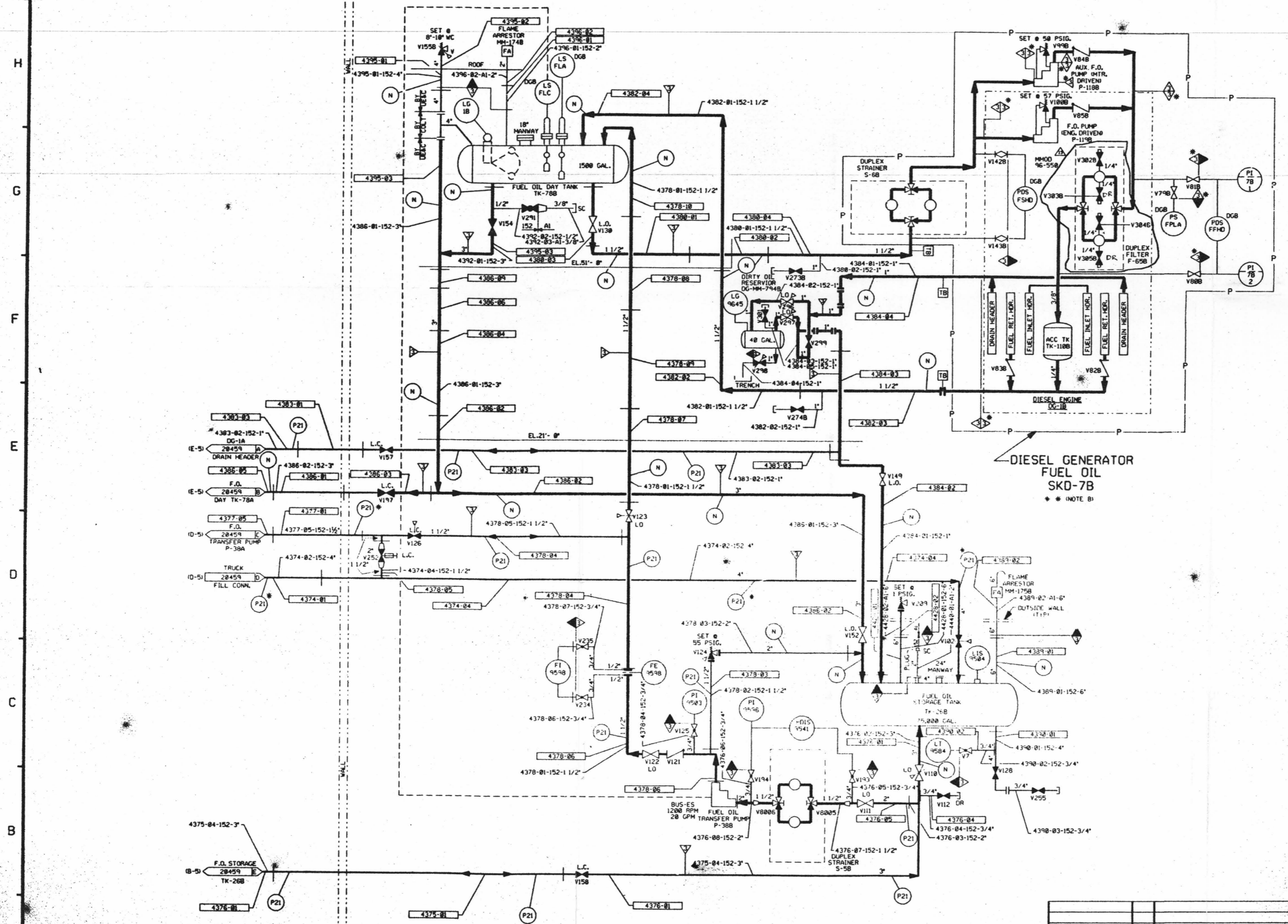


FOR INFORMATION ONLY

12 11 10 9 8 7 6 5 4 3 2 1
PID-1-DG-D20464



FOR PAID REFERENCE DRAWINGS, SYMBOLS AND ABBREVIATIONS REFER TO DRAWINGS PID-LEGEND 1 AND PAID LEGEND 2.

LEGEND

DESIGN PRESSURE	TEST PRESSURE	MIN. TEST TEMP °F	TEST MEDIUM
Y	TEST BOUNDARY		
TB	TEMPORARY TEST BOUNDARY		
P21	INTEGRITY TEST (NOTE 5) 60 PSIG	75/73.5 PSIG	35 AIR/N ₂
P22	INTEGRITY TEST	60 PSIG	66 PSIG (NOTE 1)
P40	INTEGRITY TEST	0 PSIG	50 PSIG 35 AIR/N ₂
N	NO TEST REQUIRED		

NOTES

A. VENTS AND DRAINS (ASME CL.2 AND 3.1MS) WITH CAPS/BLIND FLANGES ETC. SHALL BE TESTED TO THE LAST ISOLATION VALVE.

B. (P) SKD-7B FUEL OIL PIPING WAS SHOP TESTED @ 90 PSIG-DESIGN 60 PSIG.

C. TEST PRESSURE PER ASME SEC. XI

PORTIONS OF THIS DRAWING ARE
NUCLEAR SAFETY RELATED

- NOTES:**
- WORK THIS DRAWING WITH DRAWINGS 20456, 20457, 20459, 20463, 20465, 20467 & 20467.
 - ALL LINES, EQUIPMENT, COMPONENTS AND INSTRUMENTATION HAVE SYSTEM PREFIX ONLY UNLESS NOTED OTHERWISE.
 - DELETED.
 - DELETED.
 - DELETED.
 - DELETED.
 - CLEANLINESS CLASS 'C'.
 - VENTS, DRAINS AND TEST CONN. SAFETY CLASS AND CODE BREAKS ARE AT THE DOWN-STREAM END OF THE OUTER ISOLATION VALVE PER 1-HRY. 50PSIG UNLESS NOTED OTHERWISE.
 - INDICATES REVISION LEVEL.
 - SYSTEM DESCRIPTION NUMBER IS SD-10.

NO.	DATE	BY	CHKD	APP'D	DESCRIPTION		
13	12/1/95	MPW	HRB	YNS	INCORP. MHOD 96-550 CAB		
12	11/1/95	BCL	HRB	RSQ	INCORP. DCR 94-12 CA-B, 01-A, MHOD 95-583 CAB		
11	5/1/94	MPW	DWS	GRH	BACKED OUT DCR 90-209		
10	5/8/94	HRB	WNF	RRB	INCORP. MHOD 92-546 CAB & DCR 90-892 CAB		
9	7/4/92	HRB	MPW	DJM	INCORP. DCR 90-813 CAB		
8	5/26/92	HRB	BCL	DJM	PARTIAL INCORP. DCR 90-813 CAB		
7	4/13/91	HRB	DWS	BCL	JEV		
6	4/6/91	HRB	FCB	JM	INCORP. DCR 90-49 CAB		
5	6/28/91	HRB	FCB	DSB	APL		
4	11/28/91	HRB	RRC	APL	INCORPORATED DCR 89-33 CA-B3 DELETED NOTE 6		
3	5/14/88	GPH	RRC	APL	INCORP. DCR 87-333 REVISED NOTE 8 ADDED LEGEND NOTE A & B PER 1977-SEC 1371.2E DELETED HIGH CLASS BOUNDARY NOTE 5. TEST BOUNDARY SYMBOL FOR V122. CORRECTED TAG NO. OF TK-708. REVISED DUPLEX STRAINER APPL. 1 PER NCR 82/10668. REVISED CODE FLAG PER SSP-86-075.		
2	12/22/86	HRJ	OPD	WRD	BCL		
1	10/18/86	PAL	DWS	BCL	VNK		
REV	DATE	DSGN	DRWN	CHKD	CODE	SES	DESCRIPTION

North Atlantic Energy Service Corporation

DIESEL GENERATOR FUEL OIL SYSTEM TRAIN 'B' DETAIL

PID- 1-DG-D20464

REV	DATE	DSGN	DRWN	CHKD	CODE	SES	DESCRIPTION
9763-F-000024	5						DIESEL GENERATOR FUEL OIL AND LUBE OIL - MITD
PP 21070	9						EMERG DIESEL GEN FUEL OIL DAY TANK
PP 28069	9						EMERG DIESEL GEN JACKET WITH ESP TANK
9763-F-202182	10						D.G. FUEL & LUBE OIL P&ID DIAGRAM
REF. DRAWING NO.	REV	TITLE					

D-27