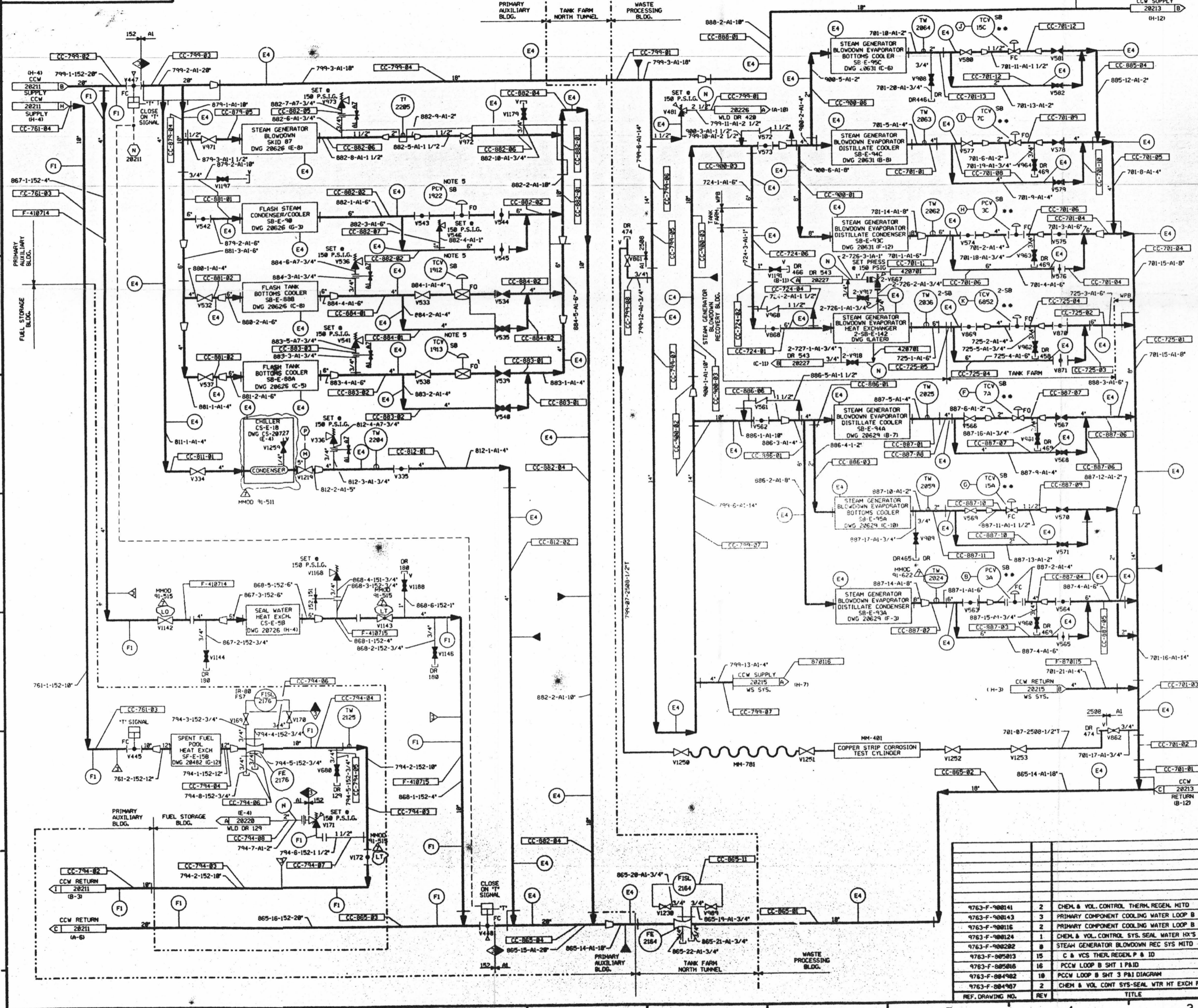


PID-1-CC-D20212

10021282014 AH

FOR P&ID REFERENCE DRAWINGS, SYMBOLS AND ABBREVIATIONS REFER TO DRAWINGS PAID - LEGEND 1 AND PAID - LEGEND 2



**LEGEND**

DESIGN PRESSURE	TEST PRESSURE	MIN. TEST TEMP. F.	TEST MEDIUM
150 PSIG	225/245 PSIG	60	WATER
150 PSIG	187.5/199 PSIG	60	WATER
NO TEST REQUIRED			

NOTE:  
VENTS AND DRAINS WITH CAPS (ASME CL. 2 & 3, NPS) SHALL BE TESTED TO THE LAST ISOLATION VALVE.

- NOTES:
- WORK THIS DRAWING WITH DRAWINGS 28204 THRU 28215.
  - ALL LINES, EQUIPMENT, COMPONENTS, AND INSTRUMENTS HAVE SYSTEM PREFIX 1-CC UNLESS NOTED OTHERWISE.
  - INSTRUMENT REFERENCES:
    - (E) FROM SB-PT-3A DWG. 1-SB-20629
    - (F) FROM SB-TE-7A DWG. 1-SB-20629
    - (G) FROM SB-TE-15A DWG. 1-SB-20629
    - (H) FROM SB-PT-3C DWG. 1-SB-20631
    - (I) FROM SB-TE-7C DWG. 1-SB-20631
    - (J) FROM SB-TE-15C DWG. 1-SB-20631
    - (K) FROM SB-TE-6852 DWG. 1-SB-20629
    - (L) FROM SB-PT-374A DWG. 1-CS-28727
  - VENT & DRAIN CODE BREAKS ARE AT THE DOWNSTREAM END OF THE OUTER ISOLATION VALVE PER 1-WAY-885111 UNLESS OTHERWISE NOTED.
  - OPERATING HANDS OF THESE CONTROL VALVES ARE ADJUSTED SUCH THAT THESE VALVES ARE CONTROLLED BETWEEN 5 TO 100% OPEN POSITION.
  - CLEANLINESS CLASS "C"
  - DELETED
  - DELETED
  - SYSTEM DESCRIPTION NO. IS SD-23
  - INDICATES REVISION LEVEL
  - INDICATES EQUIPMENT, PIPING, VALVES & INSTRUMENTS FURNISHED WITH EVAPORATOR PACKAGE BY VENDOR & INSTALLED BY UEAC.

PORTIONS OF THIS DRAWING ARE NUCLEAR SAFETY RELATED

REV	DATE	DSGN	DRWN	CHKD	CE	LDE	DESCRIPTION
7	4/2/88	MRB	FCB	JH	APL	BCL	INCRP. MHOOD'S 150 CAL. 1515 CAB & 1512 CAB
6	3/24/88	MRB	db	JH	APL	BCL	INCRP. MHOOD 98-518 CA #
5	1/24/88	MRB	RMC	JH	APL	BCL	DELETED NOTE 7
4	3/22/88	GPM	RMC	BCL	APL	RRC	REVISED NOTES 3 & 4, INST. REFERENCE SIGNAL, VALVE NUMBER, ADDED CONT. DWG. NUMBERS & COND. DELETED NOTE 8, MHOOD'S 150 CAL. DESIGNATION.
3	1/15/87	MPW	JH	BCL	DWS	RRC	ADDED UNIT 2 PIPING & VALVES PER INSTALLED CONDITIONS AND UEAC PAID REVISED LEGEND NOTE PER 1977-SEC. 137.1.2.E.
2							
1							

PSNH PUBLIC SERVICE OF NEW HAMPSHIRE

SEABROOK STATION

**PRIMARY COMPONENT COOLING LOOP B DETAIL**

PID-1-CC-D20212

D-9

FOR INFORMATION ONLY