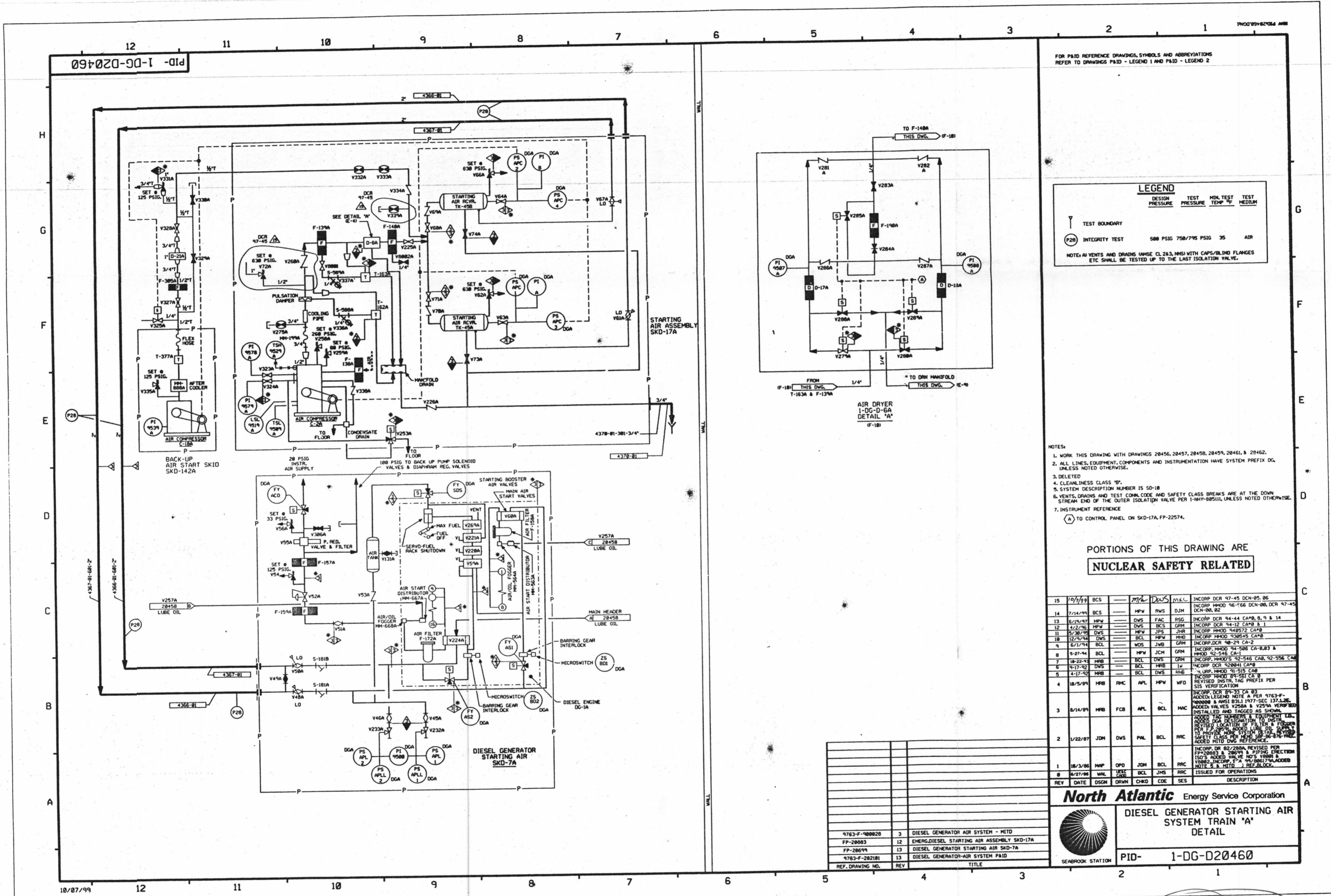


FOR INFORMATION ONLY



FOR PAID REFERENCE DRAWINGS, SYMBOLS AND ABBREVIATIONS REFER TO DRAWINGS PAID - LEGEND 1 AND PAID - LEGEND 2

**LEGEND**

DESIGN	TEST	MIN. TEST	TEST
PRESSURE	PRESSURE	TEMP. °C	MEDIUM

TEST BOUNDARY  
 INTEGRITY TEST 500 PSIG 750/795 PSIG 35 AIR  
 NOTES: ALL VENTS AND DRAINS (UNLESS CL 24.3, NMS) WITH CAPS/BLIND FLANGES ETC SHALL BE TESTED UP TO THE LAST ISOLATION VALVE.

- NOTES:
- WORK THIS DRAWING WITH DRAWINGS 20456, 20457, 20458, 20459, 20461, & 20462.
  - ALL LINES, EQUIPMENT, COMPONENTS AND INSTRUMENTATION HAVE SYSTEM PREFIX DG, UNLESS NOTED OTHERWISE.
  - DELETED
  - CLEANLINESS CLASS 'B'
  - SYSTEM DESCRIPTION NUMBER IS 50-18
  - VENTS, DRAINS AND TEST CONN. CODE AND SAFETY CLASS BREAKS ARE AT THE DOWN STREAM END OF THE OUTER ISOLATION VALVE PER 1-MWP-88511, UNLESS NOTED OTHERWISE.
  - INSTRUMENT REFERENCE  
 TO CONTROL PANEL ON SKD-17A, FP-22574.

PORTIONS OF THIS DRAWING ARE  
**NUCLEAR SAFETY RELATED**

REV	DATE	DSGN	DRWN	CHKD	CODE	SES	DESCRIPTION
15	7/19/99	BCS	MPV	RWS	DJW	MAC	INCORP DCR 97-45 DCN-05-06
14	7/14/99	BCS	MPV	RWS	DJW	MAC	INCORP HMOO 96-166 DCN-04-DCR 97-45 DCN-00-02
13	6/15/97	MPV	DWS	FAC	RSG	MAC	INCORP DCR 94-44 CA#B, 9, 9 & 14
12	4/22/96	MPV	DWS	BCL	GRN	MAC	INCORP DCR 94-112 CA#B, 1 & 11
11	9/28/95	DWS	MPV	JPS	JHR	MAC	INCORP HMOO 940572 CA#B
10	12/1/94	DWS	MBS	MPV	HRD	MAC	INCORP HMOO 930545 CA#B
9	6/17/94	BCL	MBS	JWB	GRN	MAC	INCORP DCR 94-29 CA-2
8	5-27-94	BCL	MPV	JCH	GRN	MAC	INCORP HMOO 94-506 CA-8,8,3 & HMOO 92-546 CA-1
7	10-22-94	HRB	DWS	BCL	DWS	GRN	INCORP HMOO'S 92-546 CA-8, 92-556 CA-8
6	9-17-92	DWS	BCL	HRB	J	MAC	INCORP DCR 920041 CA#B
5	4-17-92	HRB	BCL	DWS	HRB	MAC	INCORP HMOO 91-515 CA#B
4	10/5/91	HRB	RAC	APL	MPV	WFD	REVISED INSTR. TAG PREFIX PER SIS VERIFICATION
3	8/14/89	HRB	FCB	APL	BCL	MAC	INCORP DCR 89-33 CA 83 ADDS LEGEND NOTE A PER 4763-F-980000 & ANSI B31.1 1977-SEC 137.1.2.6 ADDED VALVES V258A & V259A REFERRED TO AND TAGGED AS SHOWN ADDED TAG NUMBER & EQUIPMENT TAG REVISIONS TO THIS DRAWING: 1. ADDS 1/2" INSTR. TAG PREFIX PER SIS VERIFICATION 2. ADDS 1/2" INSTR. TAG PREFIX PER SIS VERIFICATION 3. ADDS 1/2" INSTR. TAG PREFIX PER SIS VERIFICATION 4. ADDS 1/2" INSTR. TAG PREFIX PER SIS VERIFICATION 5. ADDS 1/2" INSTR. TAG PREFIX PER SIS VERIFICATION 6. ADDS 1/2" INSTR. TAG PREFIX PER SIS VERIFICATION 7. ADDS 1/2" INSTR. TAG PREFIX PER SIS VERIFICATION 8. ADDS 1/2" INSTR. TAG PREFIX PER SIS VERIFICATION 9. ADDS 1/2" INSTR. TAG PREFIX PER SIS VERIFICATION 10. ADDS 1/2" INSTR. TAG PREFIX PER SIS VERIFICATION 11. ADDS 1/2" INSTR. TAG PREFIX PER SIS VERIFICATION 12. ADDS 1/2" INSTR. TAG PREFIX PER SIS VERIFICATION 13. ADDS 1/2" INSTR. TAG PREFIX PER SIS VERIFICATION 14. ADDS 1/2" INSTR. TAG PREFIX PER SIS VERIFICATION 15. ADDS 1/2" INSTR. TAG PREFIX PER SIS VERIFICATION 16. ADDS 1/2" INSTR. TAG PREFIX PER SIS VERIFICATION 17. ADDS 1/2" INSTR. TAG PREFIX PER SIS VERIFICATION 18. ADDS 1/2" INSTR. TAG PREFIX PER SIS VERIFICATION 19. ADDS 1/2" INSTR. TAG PREFIX PER SIS VERIFICATION 20. ADDS 1/2" INSTR. TAG PREFIX PER SIS VERIFICATION 21. ADDS 1/2" INSTR. TAG PREFIX PER SIS VERIFICATION 22. ADDS 1/2" INSTR. TAG PREFIX PER SIS VERIFICATION 23. ADDS 1/2" INSTR. TAG PREFIX PER SIS VERIFICATION 24. ADDS 1/2" INSTR. TAG PREFIX PER SIS VERIFICATION 25. ADDS 1/2" INSTR. TAG PREFIX PER SIS VERIFICATION 26. ADDS 1/2" INSTR. TAG PREFIX PER SIS VERIFICATION 27. ADDS 1/2" INSTR. TAG PREFIX PER SIS VERIFICATION 28. ADDS 1/2" INSTR. TAG PREFIX PER SIS VERIFICATION 29. ADDS 1/2" INSTR. TAG PREFIX PER SIS VERIFICATION 30. ADDS 1/2" INSTR. TAG PREFIX PER SIS VERIFICATION 31. ADDS 1/2" INSTR. TAG PREFIX PER SIS VERIFICATION 32. ADDS 1/2" INSTR. TAG PREFIX PER SIS VERIFICATION 33. ADDS 1/2" INSTR. TAG PREFIX PER SIS VERIFICATION 34. ADDS 1/2" INSTR. TAG PREFIX PER SIS VERIFICATION 35. ADDS 1/2" INSTR. TAG PREFIX PER SIS VERIFICATION 36. ADDS 1/2" INSTR. TAG PREFIX PER SIS VERIFICATION 37. ADDS 1/2" INSTR. TAG PREFIX PER SIS VERIFICATION 38. ADDS 1/2" INSTR. TAG PREFIX PER SIS VERIFICATION 39. ADDS 1/2" INSTR. TAG PREFIX PER SIS VERIFICATION 40. ADDS 1/2" INSTR. TAG PREFIX PER SIS VERIFICATION 41. ADDS 1/2" INSTR. TAG PREFIX PER SIS VERIFICATION 42. ADDS 1/2" INSTR. TAG PREFIX PER SIS VERIFICATION 43. ADDS 1/2" INSTR. TAG PREFIX PER SIS VERIFICATION 44. ADDS 1/2" INSTR. TAG PREFIX PER SIS VERIFICATION 45. ADDS 1/2" INSTR. TAG PREFIX PER SIS VERIFICATION 46. ADDS 1/2" INSTR. TAG PREFIX PER SIS VERIFICATION 47. ADDS 1/2" INSTR. TAG PREFIX PER SIS VERIFICATION 48. ADDS 1/2" INSTR. TAG PREFIX PER SIS VERIFICATION 49. ADDS 1/2" INSTR. TAG PREFIX PER SIS VERIFICATION 50. ADDS 1/2" INSTR. TAG PREFIX PER SIS VERIFICATION 51. ADDS 1/2" INSTR. TAG PREFIX PER SIS VERIFICATION 52. ADDS 1/2" INSTR. TAG PREFIX PER SIS VERIFICATION 53. ADDS 1/2" INSTR. TAG PREFIX PER SIS VERIFICATION 54. ADDS 1/2" INSTR. TAG PREFIX PER SIS VERIFICATION 55. ADDS 1/2" INSTR. TAG PREFIX PER SIS VERIFICATION 56. ADDS 1/2" INSTR. TAG PREFIX PER SIS VERIFICATION 57. ADDS 1/2" INSTR. TAG PREFIX PER SIS VERIFICATION 58. ADDS 1/2" INSTR. TAG PREFIX PER SIS VERIFICATION 59. ADDS 1/2" INSTR. TAG PREFIX PER SIS VERIFICATION 60. ADDS 1/2" INSTR. TAG PREFIX PER SIS VERIFICATION 61. ADDS 1/2" INSTR. TAG PREFIX PER SIS VERIFICATION 62. ADDS 1/2" INSTR. TAG PREFIX PER SIS VERIFICATION 63. ADDS 1/2" INSTR. TAG PREFIX PER SIS VERIFICATION 64. ADDS 1/2" INSTR. TAG PREFIX PER SIS VERIFICATION 65. ADDS 1/2" INSTR. TAG PREFIX PER SIS VERIFICATION 66. ADDS 1/2" INSTR. TAG PREFIX PER SIS VERIFICATION 67. ADDS 1/2" INSTR. TAG PREFIX PER SIS VERIFICATION 68. ADDS 1/2" INSTR. TAG PREFIX PER SIS VERIFICATION 69. ADDS 1/2" INSTR. TAG PREFIX PER SIS VERIFICATION 70. ADDS 1/2" INSTR. TAG PREFIX PER SIS VERIFICATION 71. ADDS 1/2" INSTR. TAG PREFIX PER SIS VERIFICATION 72. ADDS 1/2" INSTR. TAG PREFIX PER SIS VERIFICATION 73. ADDS 1/2" INSTR. TAG PREFIX PER SIS VERIFICATION 74. ADDS 1/2" INSTR. TAG PREFIX PER SIS VERIFICATION 75. ADDS 1/2" INSTR. TAG PREFIX PER SIS VERIFICATION 76. ADDS 1/2" INSTR. TAG PREFIX PER SIS VERIFICATION 77. ADDS 1/2" INSTR. TAG PREFIX PER SIS VERIFICATION 78. ADDS 1/2" INSTR. TAG PREFIX PER SIS VERIFICATION 79. ADDS 1/2" INSTR. TAG PREFIX PER SIS VERIFICATION 80. ADDS 1/2" INSTR. TAG PREFIX PER SIS VERIFICATION 81. ADDS 1/2" INSTR. TAG PREFIX PER SIS VERIFICATION 82. ADDS 1/2" INSTR. TAG PREFIX PER SIS VERIFICATION 83. ADDS 1/2" INSTR. TAG PREFIX PER SIS VERIFICATION 84. ADDS 1/2" INSTR. TAG PREFIX PER SIS VERIFICATION 85. ADDS 1/2" INSTR. TAG PREFIX PER SIS VERIFICATION 86. ADDS 1/2" INSTR. TAG PREFIX PER SIS VERIFICATION 87. ADDS 1/2" INSTR. TAG PREFIX PER SIS VERIFICATION 88. ADDS 1/2" INSTR. TAG PREFIX PER SIS VERIFICATION 89. ADDS 1/2" INSTR. TAG PREFIX PER SIS VERIFICATION 90. ADDS 1/2" INSTR. TAG PREFIX PER SIS VERIFICATION 91. ADDS 1/2" INSTR. TAG PREFIX PER SIS VERIFICATION 92. ADDS 1/2" INSTR. TAG PREFIX PER SIS VERIFICATION 93. ADDS 1/2" INSTR. TAG PREFIX PER SIS VERIFICATION 94. ADDS 1/2" INSTR. TAG PREFIX PER SIS VERIFICATION 95. ADDS 1/2" INSTR. TAG PREFIX PER SIS VERIFICATION 96. ADDS 1/2" INSTR. TAG PREFIX PER SIS VERIFICATION 97. ADDS 1/2" INSTR. TAG PREFIX PER SIS VERIFICATION 98. ADDS 1/2" INSTR. TAG PREFIX PER SIS VERIFICATION 99. ADDS 1/2" INSTR. TAG PREFIX PER SIS VERIFICATION 100. ADDS 1/2" INSTR. TAG PREFIX PER SIS VERIFICATION

**North Atlantic Energy Service Corporation**

**DIESEL GENERATOR STARTING AIR SYSTEM TRAIN 'A' DETAIL**

SEA BROOK STATION

PID- 1-DG-D20460

REF. DRAWING NO.	REV.	TITLE
4763-F-980020	3	DIESEL GENERATOR AIR SYSTEM - MTD
FP-20003	12	EMERG. DIESEL STARTING AIR ASSEMBLY SKD-17A
FP-20094	13	DIESEL GENERATOR STARTING AIR SKD-7A
4763-F-202101	13	DIESEL GENERATOR-AIR SYSTEM PAID

D-23