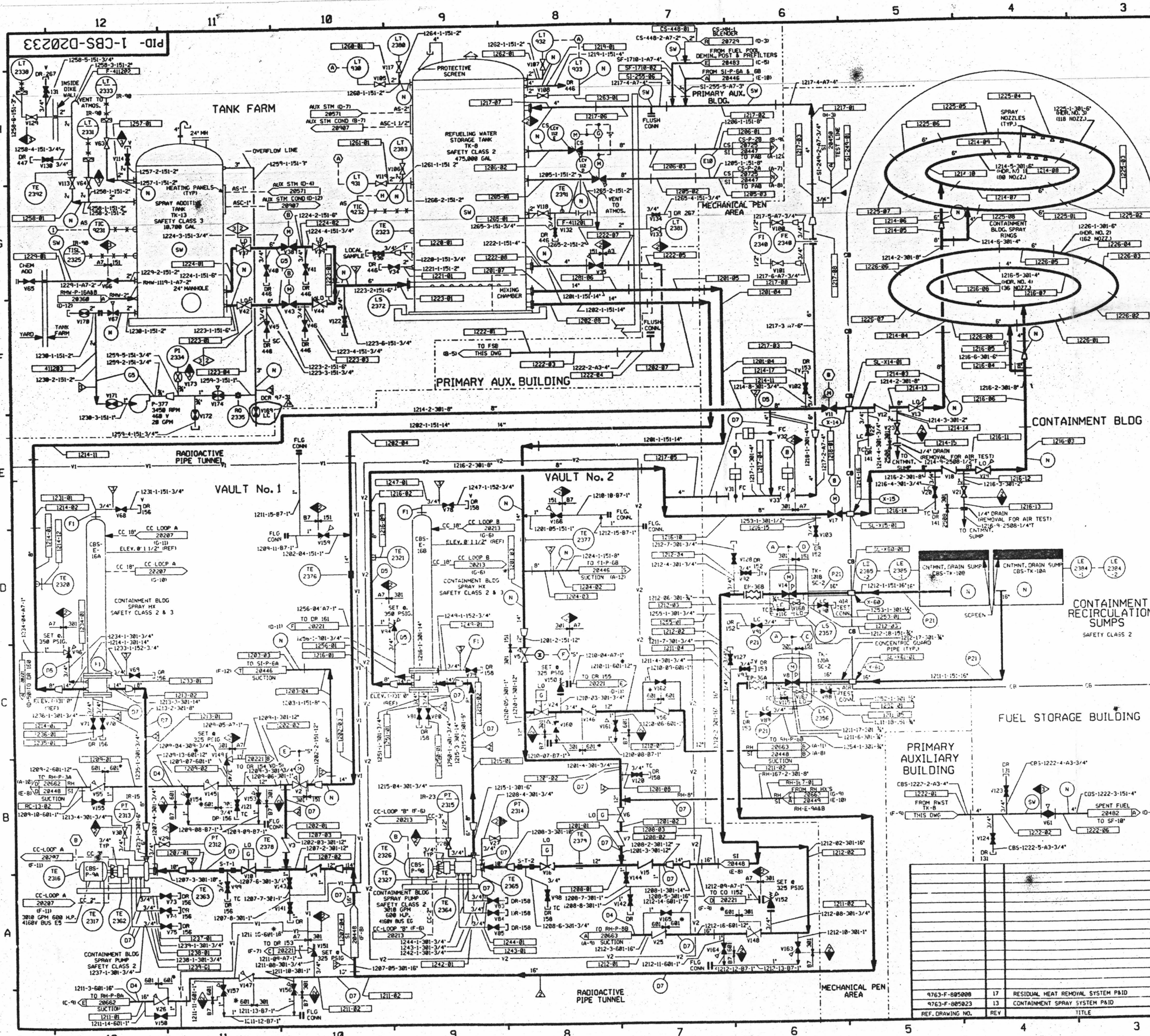


FOR INFORMATION ONLY



FOR PAID REFERENCE DRAWINGS, SYMBOLS AND ABBREVIATIONS REFER TO DRAWINGS PAID - LEGEND 1 AND PAID - LEGEND 2

LEGEND				
DESIGN	TEST	MIN. TEST	TEST	
PRESSURE	PRESSURE	TEMP °F	MEDIUM	
(N)	NO TEST REQUIRED			
(T)	TEST BOUNDARY			
(D4)	INTEGRITY TEST	680 PSIG	750/775 PSIG	35 WATER
(D7)	INTEGRITY TEST	350 PSIG	435.7/463 PSIG	35 WATER
(F1)	INTEGRITY TEST	150 PSIG	187.5/199 PSIG	35 WATER
(G5)	INTEGRITY TEST	20 PSIG	25/26.5 PSIG	35 WATER
(SW)	STANDING WATER			
(E10)	STANDING WATER	220 PSIG	275/291.5 PSIG	35 WATER
(D5)	INTEGRITY TEST	300 PSIG	375/398 PSIG	35 WATER
(P21)	INTEGRITY TEST	60 PSIG	75/79.5 PSIG	35 AIR/N ₂

NOTE: A. VENT AND DRAINS WITH CAPS/BLIND FLANGES ETC. (ASME CL 2 & 3, NPS) SHALL BE TESTED TO THE LAST ISOLATION VALVE.

- NOTES:
- ALL LINES, EQUIPMENT, COMPONENTS AND INSTRUMENTATION HAVE SYSTEM PREFIX CBS, UNLESS NOTED OTHERWISE.
 - THE CBS IS A ONE TO DRAWING SYSTEM, AN OVERVIEW IS NOT REQUIRED. PORTIONS OF THIS DRAWING ARE DUPLICATED ON DWG. SI-29449 DUE TO DUAL SYSTEM FUNCTIONS.
 - INSTRUMENTATION SYMBOLS:
 - (A) THIS DRAWING
 - (B) CONTAINMENT SPRAY SIGNAL P
 - (C) INTERLOCK FROM RC-V22, RC-V23 ON DWG. RC-28841
 - (D) INTERLOCK FROM RC-V87, RC-V88 ON DWG. RC-28844
 - (E) INTERLOCK FROM RH-V36, ON DWG. RH-28652 AND V14 THIS DRAWING
 - (F) INTERLOCK FROM RH-V36, ON DWG. RH-28653 AND V14 THIS DRAWING
 - (G) CS-TK-1 LEVEL LT-105, LT-112 ON DWG. CS-28725
 - (H) STEAM SUPPLY VLV. AS-TY-9232 ON DWG. AS-28571
 - (I) STEAM SUPPLY VLV. AS-TY-9231 ON DWG. AS-28571
 - VENT AND DRAIN CODE BREAKS ARE AT THE DOWNSTREAM END OF THE OUTER ISOLATION VALVE PER 1-WAY-88/111 UNLESS NOTED OTHERWISE.
 - CLEANLINESS CLASS 'B'.
 - SYSTEM DESCRIPTION NO IS SD-28.
 - DELETED
- △ INDICATES REVISION LEVEL
 * DENOTES UPGRADE OF PIPING FROM 301 TO 801 MATERIAL SPEC.

PORTIONS OF THIS DRAWING ARE
NUCLEAR SAFETY RELATED

19	8/13/93	MPW	DES	DESIGN	INCORP. DCR 97-31 DCN-05, 06		
18	3/11/90	BCS	DWS	DRN	INCORP. DCR 97-31 DCN-06, 04		
17	11/28/89	BCS	MPW	RRC	INCORP. MHOJ 95-509 CAB		
16	11/11/89	MPW	BCL	DWS	PARTIAL INCORP. MHOJ 95-509 CAB		
15	7/5/89	MPW	BCL	DWS	INCORP. MHOJ 93-545 CAB		
14	4/23/89	MRB	BCL	JM	INCORP. DCR 86-233 CAB		
13	4/9/89	GPM	FAC	JM	INCORP. MHOJ 91-515 CAB		
12	5/1/89	MRB	RMC	JM	INCORP. MHOJ 89-0552 CA 0		
11	11/11/89	MRB	JM/FAC	GPM	INCORP. DCR 87-311 CA19 TRAIN B REVISIONS.		
10	9/6/89	MRB	JM/RMC	APL	PARTIAL INCORP. DCR 87-311 CAB7 TRAIN A REVISIONS. DELETE SYSTEM PREFIX PER NOTE 1.		
9	5/9/89	MRB	RMC	GPM	INCORPORATED DCR 86-338 CA 2		
8	6/26/86	WES	YMK	JMS	ISSUED FOR OPERATIONS		
REV	DATE	DSGN	DRWN	CHKD	CDE	SES	DESCRIPTION

North Atlantic Energy Service Corporation

CONTAINMENT SPRAY SYSTEM

SEABROOK STATION

PID- 1-CBS-D20233

REF. DRAWING NO.	REV	TITLE
4763-F-085008	17	RESIDUAL HEAT REMOVAL SYSTEM PAID
4763-F-085023	13	CONTAINMENT SPRAY SYSTEM PAID

D-3