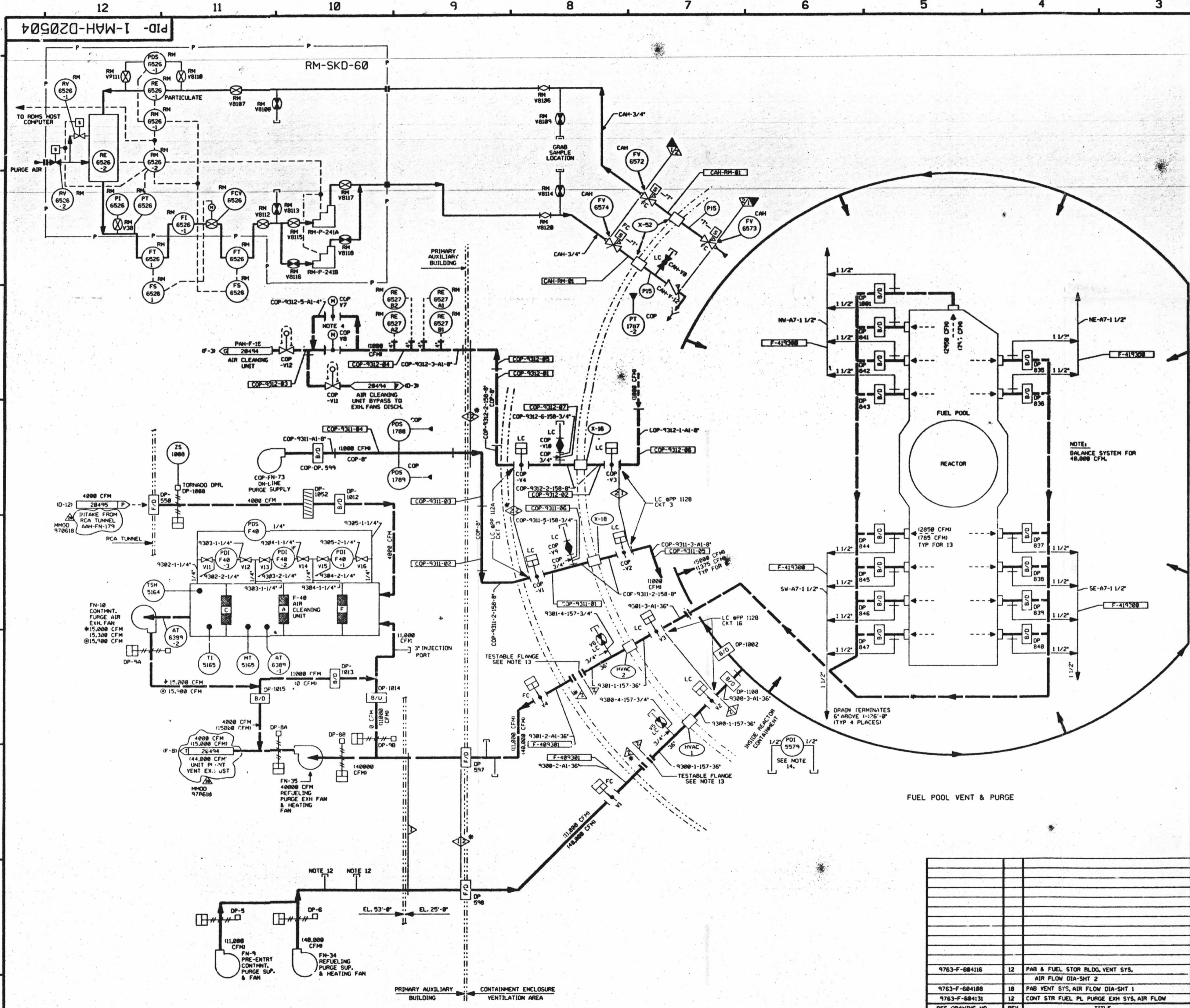


FOR INFORMATION ONLY



FOR PAID REFERENCE DRAWINGS, SYMBOLS AND ABBREVIATIONS REFER TO DRAWINGS PAID - LEGEND 1 AND PAID - LEGEND 2

| LEGEND | | | | |
|----------|----------------|----------|------------|--------|
| DESIGN | TEST | MDL TEST | TEST | |
| PRESSURE | PRESSURE | TEMP F | TEMP F | MEDIUM |
| Y | TEST BOUNDARY | | | |
| PIB | INTEGRITY TEST | 52 PSIG | 65/69 PSIG | 35 AIR |

NOTE:
A. VENTS & DRAINS WITH CAPS/BLIND FLANGES ETC. MUST BE CL. 2 & 3 SHALL BE TESTED TO THE LAST ISOLATION VALVE.

- NOTES:
1. WORK THIS DRAWING WITH 20492, 20494 THRU 20503 & 20505 & 20506.
 2. ALL PIPING, HVAC, EQUIP, COMPONENTS & INSTRUMENTS HAVE SYSTEM PREFIX COP (CONTAINMENT AIR PURGE) UNLESS NOTED. COP - (CONTAINMENT ON-LINE PURGE)
 3. FOR SYMBOL LEGEND, SEE NOTE 3 ON DWG. 20494.
 4. VALVE COP-V7 IS USED FOR THROTTLING.
 5. DELETED
 6. DELETED
 7. DELETED
 8. FILTER HOUSING DIFFERENTIAL PRESSURES & REQUIRED FLOWS:

| FILTER TAG NO. | CLEAN FLOW CFM | DIRTY FLOW CFM | ANLI DIRTY FLOW CFM | SURVEILLANCE TEST FLOW CFM | SURVEILLANCE TEST FLOW %RUC CFM | SURVEILLANCE TEST FLOW %RUC CFM |
|----------------|----------------|----------------|---------------------|----------------------------|---------------------------------|---------------------------------|
| CAP-F-48 | 15000 | 15000 | 15000 | 15450 | 10495 | 17400 |

9. VENT & DRAIN CODE BREAKS ARE AT THE DOWNSTREAM SIDE OF THE OUTER ISOLATION VALVE PER 1-MAY-80(11) UNLESS OTHERWISE NOTED.
10. SYSTEM DESCRIPTION NUMBER IS 50-68.
11. Δ INDICATES REVISION LEVEL.
12. INSTRUMENT REMOVED AND LINE CAPPED.
13. TESTABLE FLANGES ARE INSTALLED DURING MODES 1-4 UNLESS OPERATIONS DURING MODES 5 & 6 (OUTAGES), THE BLIND FLANGES WILL BE REMOVED AND TRANSITION PIECES INSTALLED.
14. POI FOR USE DURING REFUELING OUTAGES. ATTACH TEMP. TUBING TO HIGH SIDE AND ROUTE TO OUTSIDE AMBIENT.

PORTIONS OF THIS DRAWING ARE
NUCLEAR SAFETY RELATED

| REV | DATE | DSGN | CHKD | CODE | SES | DESCRIPTION |
|-----|----------|------|------|------|------|--|
| 20 | 5/1/99 | | | | | INCORP. M400 970618 DCA#00 |
| 19 | | | | | | INCORP. M400 97-521 DCA#00 |
| 18 | 12/2/98 | MPW | BCS | PEB | R/JF | INCORP. M400 95-508 CA-B |
| 17 | 10/6/98 | BCL | HW | TRC | MAC | INCORP. DCA 140003 CA-B |
| 16 | 8/27/98 | BCL | DWS | MPW | DJM | INCORP. M400 94-578 CA-B |
| 15 | 8/26/98 | MPW | BCL | DWS | MPW | INCORP. DCA 93-14 CA-B |
| 14 | 7/27/98 | MPW | BCL | DWS | MPW | INCORP. M400 93-14 CA-B |
| 13 | 10/27/92 | BCL | DWS | BAW | MAC | INCORP. DCA 90-14 CA-B |
| 12 | 4/14/92 | MPW | DWS | BCL | JEV | INCORP. M400 91-515 CA-B |
| 11 | 4/28/91 | MPW | FCR | JM | MAC | INCORP. DCA 88-12 CA-B |
| 10 | 2/26/91 | MPW | FCR | JM | MAC | INCORP. DCA 88-315 CA-B & M400 88-548 CA-B |
| 9 | 1/23/90 | MPW | RMC | APL | CCH | INCORP. M400 87-506 CA-B AND M400 87-563 CA-B |
| 8 | 4/27/89 | GPM | RMC | MPB | BCL | INCORP. DCA 86-555 CA-B & M400 86-555 CA-B |
| 7 | 3/12/87 | MPW | TAK | HW | BCL | REVISED VALVE SYMBOLS PER PP 732-08, NOTE 9, ISO DRAWING NUMBER ADDED LEGEND NOTE PER 9763-F-10000, DELETED NOTE 7 |
| 6 | 4/9/87 | DAP | HW | LFC | BCL | DELETED CHANGE ITEM PER DCA 87-125 |
| 5 | 3/13/87 | MRJ | TAK | JDM | BCL | REVISED REV. 5 SIGNOFF DATE ERROR, REVISED SYS. PREFIX FOR VLV'S ON RM-SD-68, REVISED CAH-V8 TO GLOBE VLV PER ECA 90-100, ADDED SENSING LINES AND REMOVED BACK INTO SYMBOLS PER EXISTING CONFIGURATION, REVISED ERECTION ISO REF'S, ADDED INTEGRITY TEST REF'S & CHANGE ITEM 1 |
| 4 | 1/22/87 | MRJ | TAK | MPW | BCL | ADDED ISO BOUNDARIES AND DWG NO'S PER ERECTION ISO'S |
| 3 | 12/23/86 | JDM | TAK | MPW | RRC | ADDED COORDINATE DWG COORDINATES, INCORP. ECA 90-112-077 |
| 2 | 10/17/86 | JDM | TAK | MPW | RRC | INCORP. ECA 88-218-088 |
| 1 | 10/9/86 | JDM | VES | MAP | BCL | ADDED ISO REF & LTR 8125 REV. PER PAID ERECTION ISO & REV. REF. DWG, INCORP. DETAILS OF RM-SD-68, ADDED NOTES IN II & PAID LEGEND, INCORP. ECA 88-200-088 & 88-212-088 ISSUED FOR OPERATIONS |

North Atlantic Energy Service Corporation

MISCELLANEOUS AIR HANDLING CONTAINMENT & PURGES DETAIL (COP, CAP)

SEABROOK STATION

PID- 1-MAH-D20504

| REF. DRAWING NO. | REV | TITLE |
|------------------|-----|--|
| 9763-F-684116 | 12 | PAB & FUEL STOR. BLDG. VENT. SYS. AIR FLOW DIA-SHT 2 |
| 9763-F-684100 | 18 | PAB VENT. SYS. AIR FLOW DIA-SHT 1 |
| 9763-F-684131 | 12 | CONT. STR. FUEL PL. PURGE EXH. SYS. AIR FLOW |

12 11 10 9 8 7 6 5 4 3 2 1

22 11 11 50 50 11 8.5 11 17 22

04/19/99