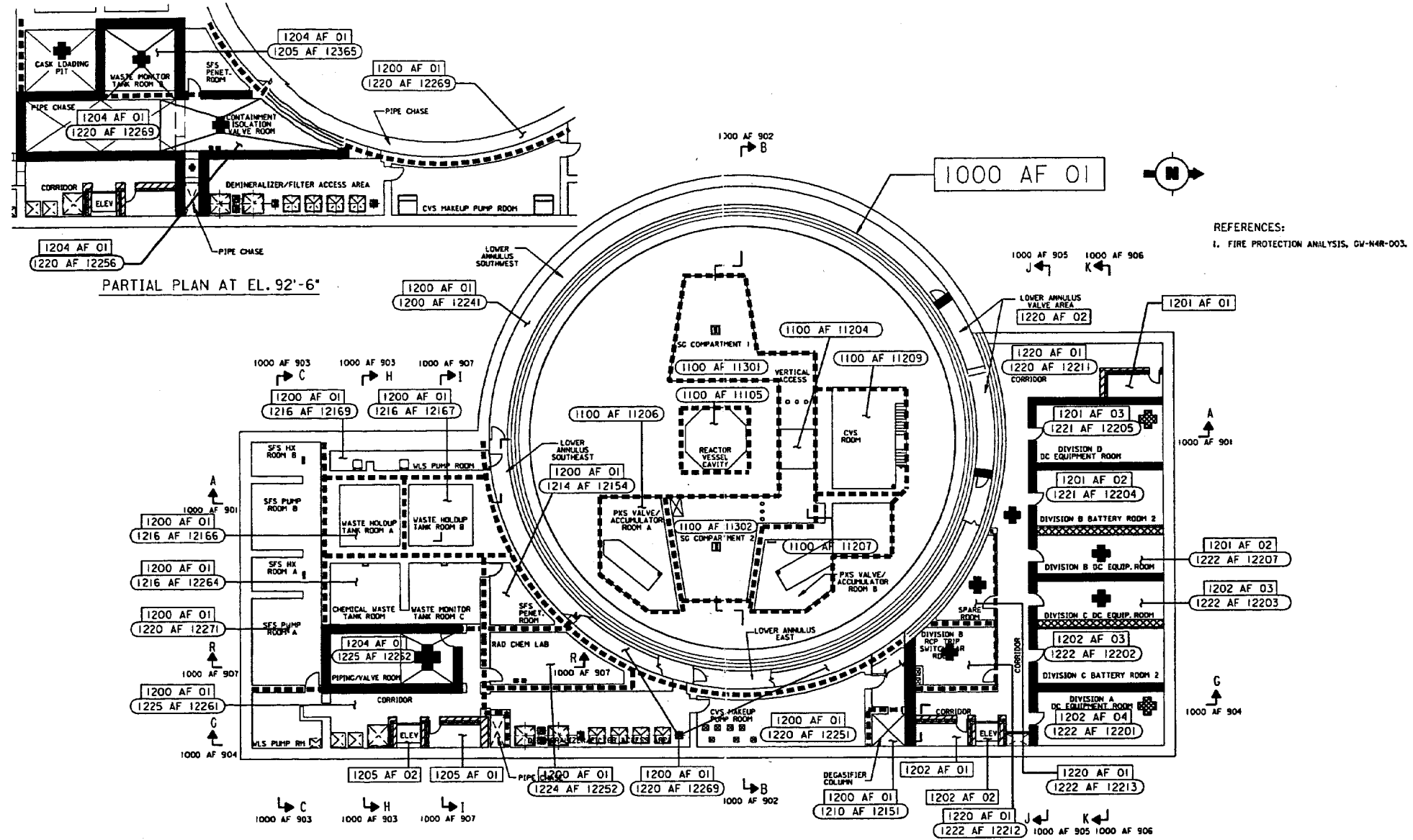


- NOTES:
1. THE FIRST FOUR DIGITS OF THE FIRE AREA AND FIRE ZONE NUMBERS INDICATE BUILDING, LEVEL AND BUILDING AREA. WHEN THE 3RD OR 4TH DIGIT IS ZERO, THE FIRE AREA/ZONE SPANS MORE THAN ONE LEVEL OR BUILDING AREA. THE LAST PORTION OF THE FIRE ZONE NUMBER MATCHES THE ROOM NUMBER OF A PROMINENT ROOM IN THE FIRE ZONE.
  2. ONE-HOUR FIRE BARRIERS ARE USED WITHIN NUCLEAR ISLAND FIRE AREAS TO SEPARATE BATTERY ROOMS FROM ROOMS THAT CONTAIN ELECTRICAL EQUIPMENT, AND TO SEPARATE THE MCR CONTROL AREA FROM PERIPHERAL ROOMS.
  3. ELECTRICAL CABLE CHASES AND VENTILATION DUCT CHASES THAT PASS THROUGH CERTAIN FIRE AREAS ARE SEPARATED FROM THOSE FIRE AREAS BY THREE-HOUR FIRE BARRIERS. THESE CHASES ARE NOT SHOWN.

Figure 9A-1 (Sheet 2 of 16)

[Nuclear Island Fire Area Plan at Elevation 66'-6"]\*

\*NRC Staff approval is required prior to implementing a change in this information; see DCD Introduction Section 3.5.

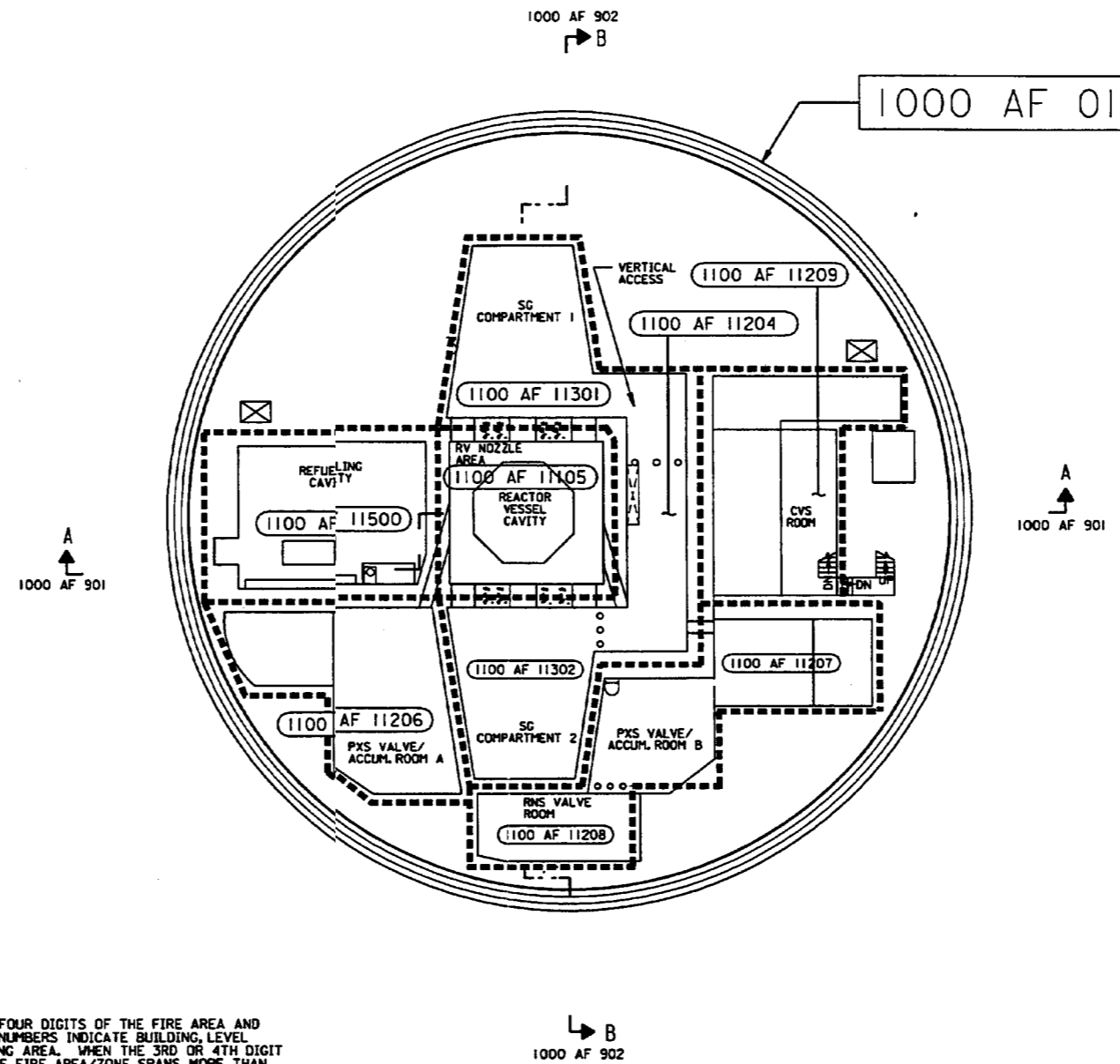


- NOTES:
1. THE FIRST FOUR DIGITS OF THE FIRE AREA AND FIRE ZONE NUMBERS INDICATE BUILDING, LEVEL AND BUILDING AREA. WHEN THE 3RD OR 4TH DIGIT IS ZERO, THE FIRE AREA/ZONE SPANS MORE THAN ONE LEVEL OR BUILDING AREA. THE LAST PORTION OF THE FIRE ZONE NUMBER MATCHES THE ROOM NUMBER OF A PROMINENT ROOM IN THE FIRE ZONE.
  2. ONE-HOUR FIRE BARRIERS ARE USED WITHIN NUCLEAR ISLAND FIRE AREAS TO SEPARATE BATTERY ROOMS FROM ROOMS THAT CONTAIN ELECTRICAL EQUIPMENT, AND TO SEPARATE THE MCR CONTROL AREA FROM PERIPHERAL ROOMS.
  3. ELECTRICAL CABLE CHASES AND VENTILATION DUCT CHASES THAT PASS THROUGH CERTAIN FIRE AREAS ARE SEPARATED FROM THOSE FIRE AREAS BY THREE-HOUR FIRE BARRIERS. THESE CHASES ARE NOT SHOWN.

Figure 9A-1 (Sheet 3 of 16)

[Nuclear Island Fire Area Plan at Elevation 82'-6"]\*

\*NRC Staff approval is required prior to implementing a change in this information; see DCD Introduction Section 3.5.



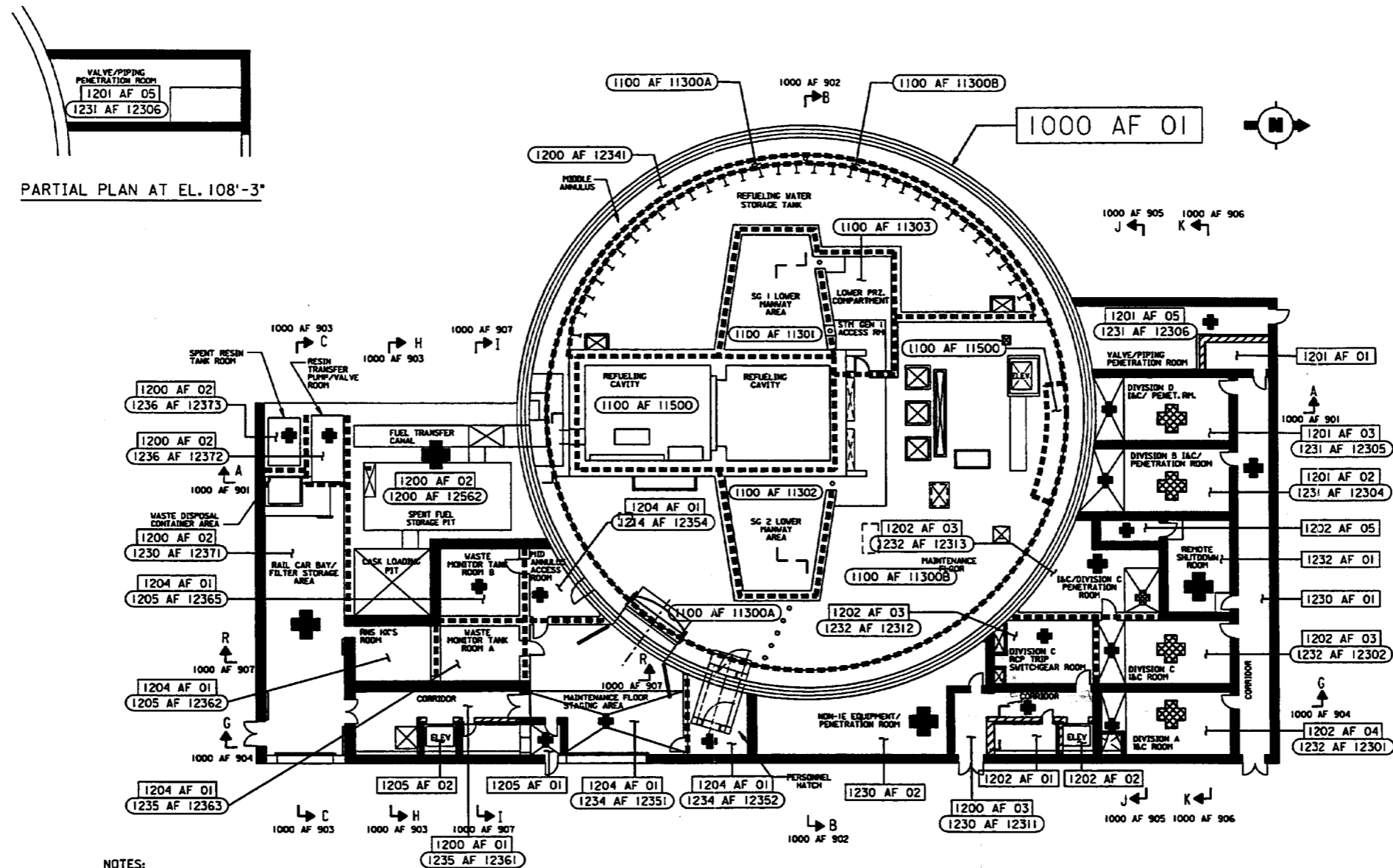
NOTES:

1. THE FIRST FOUR DIGITS OF THE FIRE AREA AND FIRE ZONE NUMBERS INDICATE BUILDING, LEVEL AND BUILDING AREA. WHEN THE 3RD OR 4TH DIGIT IS ZERO, THE FIRE AREA/ZONE SPANS MORE THAN ONE LEVEL OR BUILDING AREA. THE LAST PORTION OF THE FIRE ZONE NUMBER MATCHES THE ROOM NUMBER OF A PROMINENT ROOM IN THE FIRE ZONE.
2. ONE-HOUR FIRE BARRIERS ARE USED WITHIN NUCLEAR ISLAND FIRE AREAS TO SEPARATE BATTERY ROOMS FROM ROOMS THAT CONTAIN ELECTRICAL EQUIPMENT, AND TO SEPARATE THE MCR CONTROL AREA FROM PERIPHERAL ROOMS.
3. ELECTRICAL CABLE CHASES AND VENTILATION DUCT CHASES THAT PASS THROUGH CERTAIN FIRE AREAS ARE SEPARATED FROM THOSE FIRE AREAS BY THREE-HOUR FIRE BARRIERS. THESE CHASES ARE NOT SHOWN.

Figure 9A-1 (Sheet 4 of 16)

[Nuclear Island Fire Area Plan at Elevation 96'-6'']\*

\*NRC Staff approval is required prior to implementing a change in this information; see DCD Introduction Section 3.5.

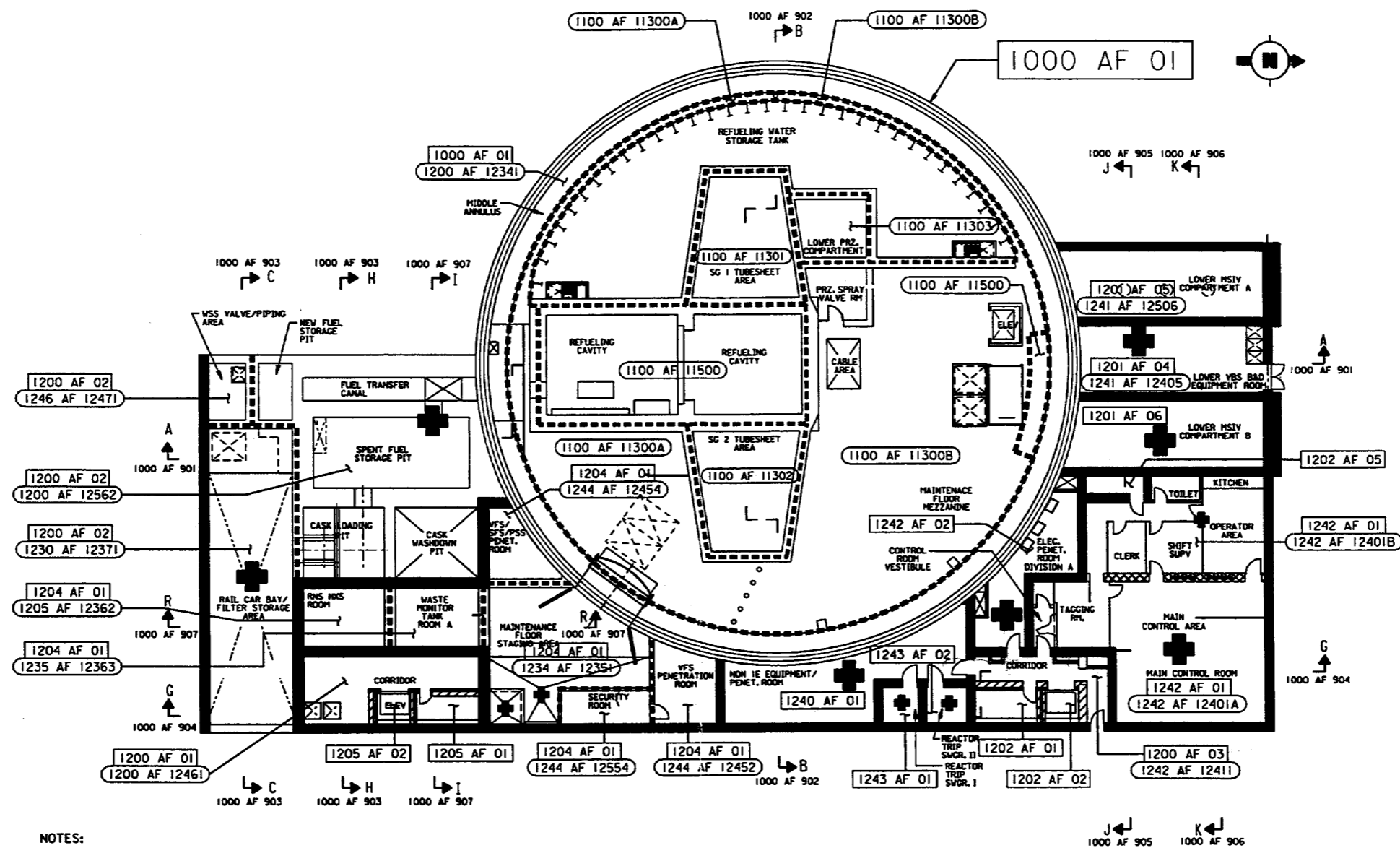


- NOTES:
1. THE FIRST FOUR DIGITS OF THE FIRE AREA AND FIRE ZONE NUMBERS INDICATE BUILDING LEVEL AND BUILDING AREA. WHEN THE 3RD OR 4TH DIGIT IS ZERO, THE FIRE AREA/ZONE SPANS MORE THAN ONE LEVEL OR BUILDING AREA. THE LAST PORTION OF THE FIRE ZONE NUMBER MATCHES THE ROOM NUMBER OF A PROMINENT ROOM IN THE FIRE ZONE.
  2. ONE-HOUR FIRE BARRIERS ARE USED WITHIN NUCLEAR ISLAND FIRE AREAS TO SEPARATE BATTERY ROOMS FROM ROOMS THAT CONTAIN ELECTRICAL EQUIPMENT, AND TO SEPARATE THE MCR CONTROL AREA FROM PERIPHERAL ROOMS.
  3. ELECTRICAL CABLE CHASES AND VENTILATION DUCT CHASES THAT PASS THROUGH CERTAIN FIRE AREAS ARE SEPARATED FROM THOSE FIRE AREAS BY THREE-HOUR FIRE BARRIERS. THESE CHASES ARE NOT SHOWN.

Figure 9A-1 (Sheet 5 of 16)

[Nuclear Island Fire Area  
Plan at Elevation 100'-0" & 107'-2"]\*

\*NRC Staff approval is required prior to implementing a change in this information; see DCD Introduction Section 3.5.



- NOTES:
1. THE FIRST FOUR DIGITS OF THE FIRE AREA AND FIRE ZONE NUMBERS INDICATE BUILDING, LEVEL AND BUILDING AREA. WHEN THE 3RD OR 4TH DIGIT IS ZERO, THE FIRE AREA/ZONE SPANS MORE THAN ONE LEVEL OR BUILDING AREA. THE LAST PORTION OF THE FIRE ZONE NUMBER MATCHES THE ROOM NUMBER OF A PROMINENT ROOM IN THE FIRE ZONE.
  2. ONE-HOUR FIRE BARRIERS ARE USED WITHIN NUCLEAR ISLAND FIRE AREAS TO SEPARATE BATTERY ROOMS FROM ROOMS THAT CONTAIN ELECTRICAL EQUIPMENT, AND TO SEPARATE THE MCR CONTROL AREA FROM PERIPHERAL ROOMS.
  3. ELECTRICAL CABLE CHASES AND VENTILATION DUCT CHASES THAT PASS THROUGH CERTAIN FIRE AREAS ARE SEPARATED FROM THOSE FIRE AREAS BY THREE-HOUR FIRE BARRIERS. THESE CHASES ARE NOT SHOWN.

Figure 9A-1 (Sheet 6 of 16)

[Nuclear Island Fire Area Plan at Elevation 117'-6"]\*

\*NRC Staff approval is required prior to implementing a change in this information; see DCD Introduction Section 3.5.

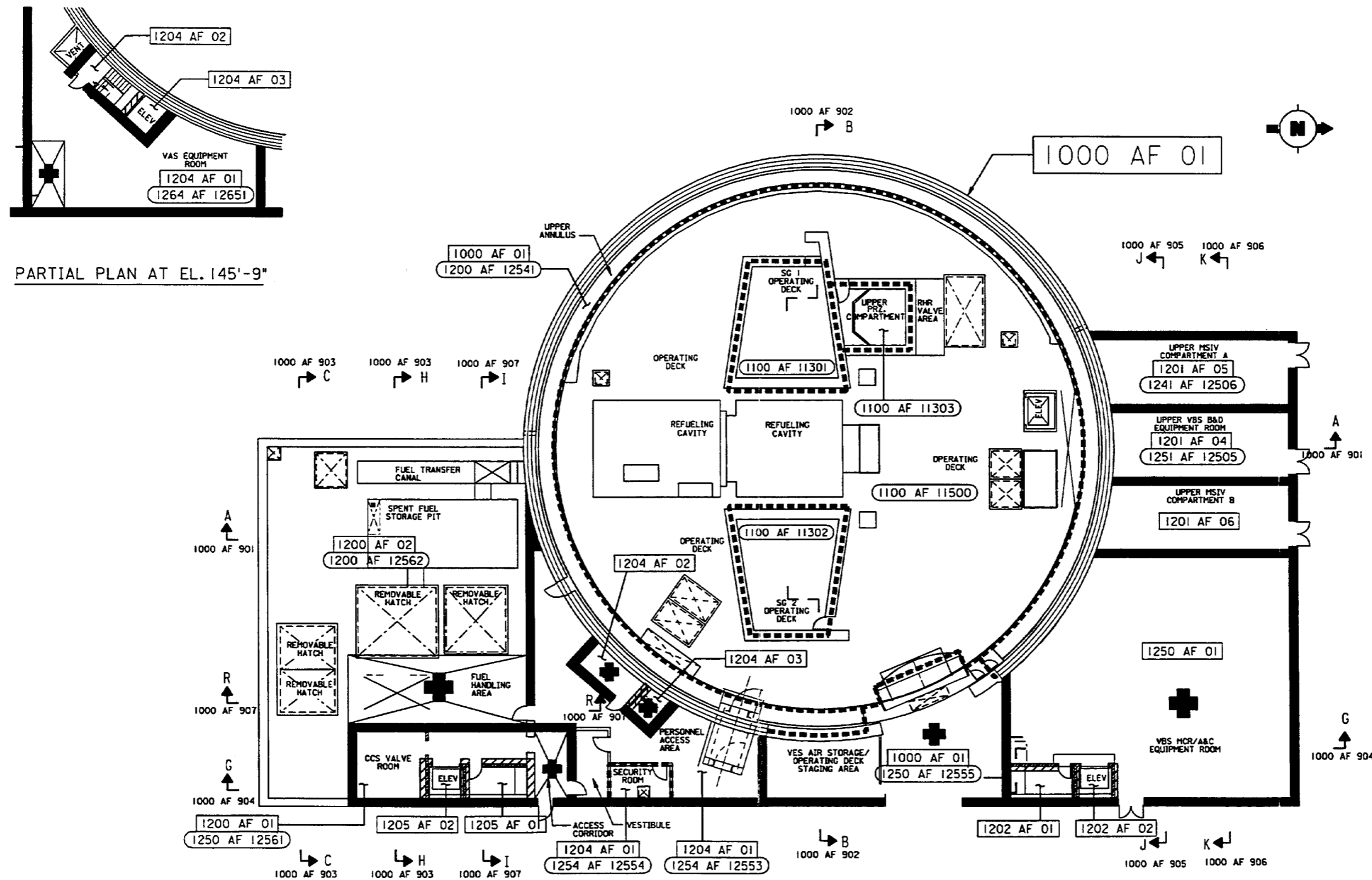
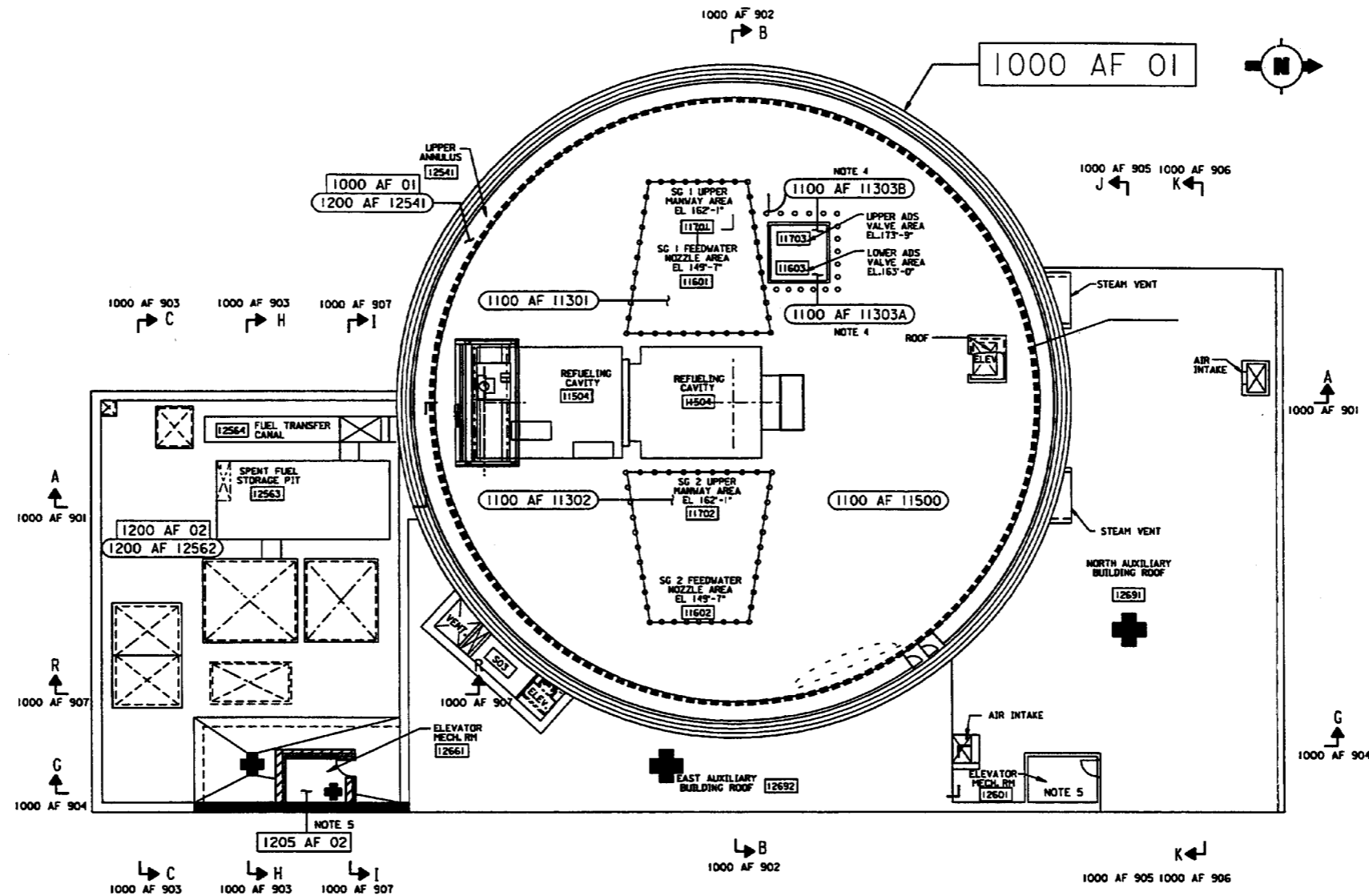


Figure 9A-1 (Sheet 7 of 16)

[Nuclear Island Fire Area Plan at Elevation 135'-3"]\*

\*NRC Staff approval is required prior to implementing a change in this information; see DCD Introduction Section 3.5.

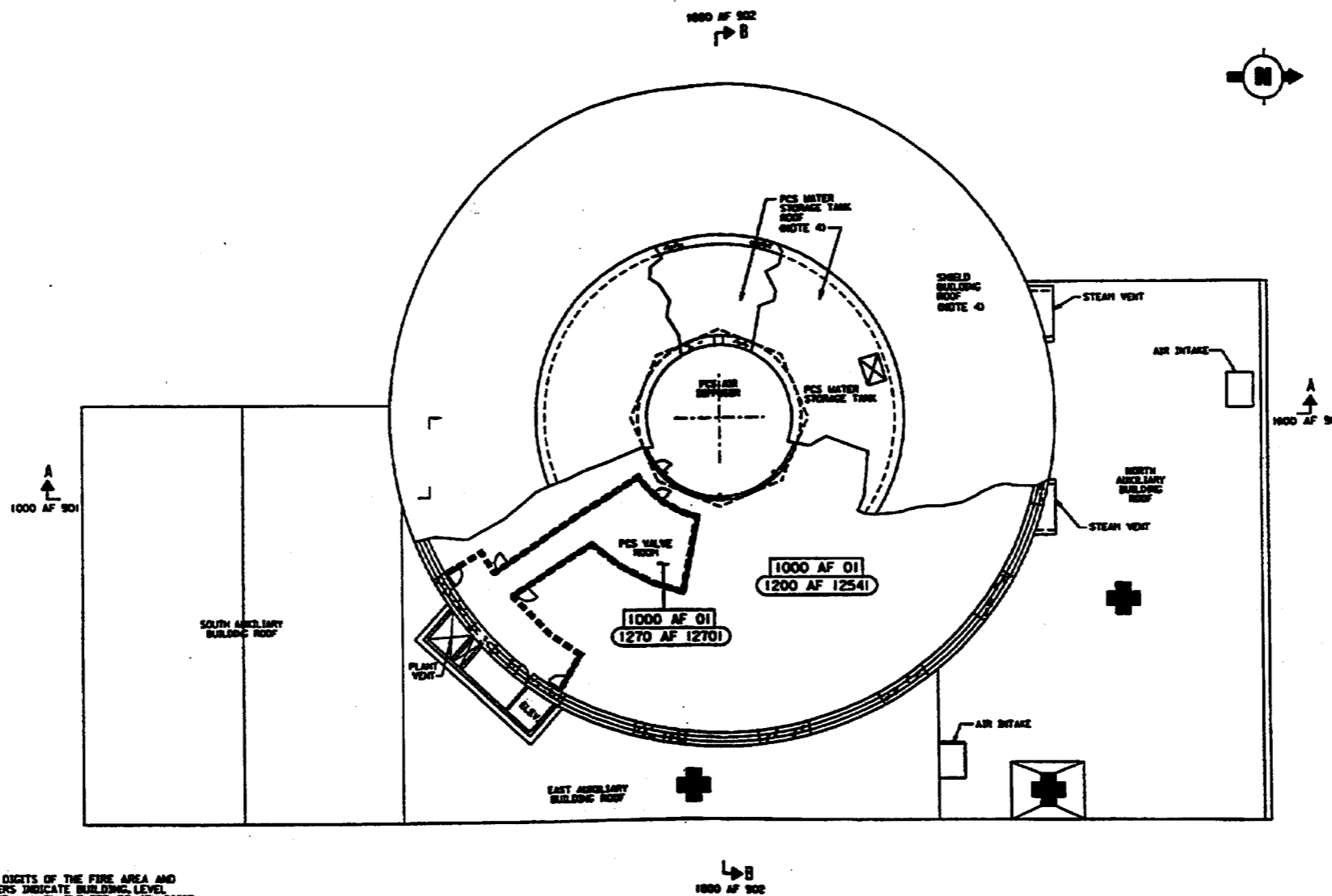


- NOTES:
1. THE FIRST FOUR DIGITS OF THE FIRE AREA AND FIRE ZONE NUMBERS INDICATE BUILDING LEVEL AND BUILDING AREA. WHEN THE 3RD OR 4TH DIGIT IS ZERO, THE FIRE AREA/ZONE SPANS MORE THAN ONE LEVEL OR BUILDING AREA. THE LAST PORTION OF THE FIRE ZONE NUMBER MATCHES THE ROOM NUMBER OF A PROMINENT ROOM IN THE FIRE ZONE.
  2. ONE-HOUR FIRE BARRIERS ARE USED WITHIN NUCLEAR ISLAND FIRE AREAS TO SEPARATE BATTERY ROOMS FROM ROOMS THAT CONTAIN ELECTRICAL EQUIPMENT, AND TO SEPARATE THE MCR CONTROL AREA FROM PERIPHERAL ROOMS.
  3. ELECTRICAL CABLE CHASES AND VENTILATION DUCT CHASES THAT PASS THROUGH CERTAIN FIRE AREAS ARE SEPARATED FROM THOSE FIRE AREAS BY THREE-HOUR FIRE BARRIERS. THESE CHASES ARE NOT SHOWN.
  4. FIRE ZONE 1100 AF 11303B (ADS UPPER VALVE AREA) IS LOCATED ON A PLATFORM DIRECTLY ABOVE FIRE ZONE 1100 AF 11303A (ADS LOWER VALVE AREA).
  5. THE PORTION OF THE FLOOR OF THE ELEVATOR MECHANICAL ROOM DIRECTLY OVER THE ELEVATOR SHAFT IS NOT A FIRE BARRIER.

Figure 9A-1 (Sheet 8 of 16)

[Nuclear Island Fire Area  
Plan at Elevation 153'-0" & 160'-6"]\*

\*NRC Staff approval is required prior to implementing a change in this information; see DCD Introduction Section 3.5.



NOTES:

1. THE FIRST FOUR DIGITS OF THE FIRE AREA AND FIRE ZONE NUMBERS INDICATE BUILDING LEVEL AND BUILDING AREA. WHEN THE 3RD OR 4TH DIGIT IS ZERO, THE FIRE AREA/ZONE SPANS MORE THAN ONE LEVEL OF BUILDING AREA. THE LAST PORTION OF THE FIRE ZONE NUMBER MATCHES THE ROOM NUMBER OF A PROMINENT ROOM IN THE FIRE ZONE.
2. ONE-HOUR FIRE BARRIERS ARE USED WITHIN NUCLEAR ISLAND FIRE AREAS TO SEPARATE BATTERY ROOMS FROM ROOMS THAT CONTAIN ELECTRICAL EQUIPMENT, AND TO SEPARATE THE PCX CONTROL AREA FROM PERIPHERAL ROOMS.
3. ELECTRICAL CABLE CHASES AND VENTILATION DUCT CHASES THAT PASS THROUGH CERTAIN FIRE AREAS ARE SEPARATED FROM THOSE FIRE AREAS BY THREE-HOUR FIRE BARRIERS. THESE CHASES ARE NOT SHOWN.
4. THE ROOFS OF THE SHIELD BUILDING AND THE PCS STORAGE TANK ARE NON-RATED THREE-HOUR FIRE BARRIERS, CAPABLE OF QUALIFYING AS RATED THREE-HOUR BARRIERS.

Figure 9A-1 (Sheet 9 of 16)

[Nuclear Island Fire Areas  
Plan at Elevation 160'-6" & 180'-0"]\*

\*NRC Staff approval is required prior to implementing a change in this information; see DCD Introduction Section 3.5.



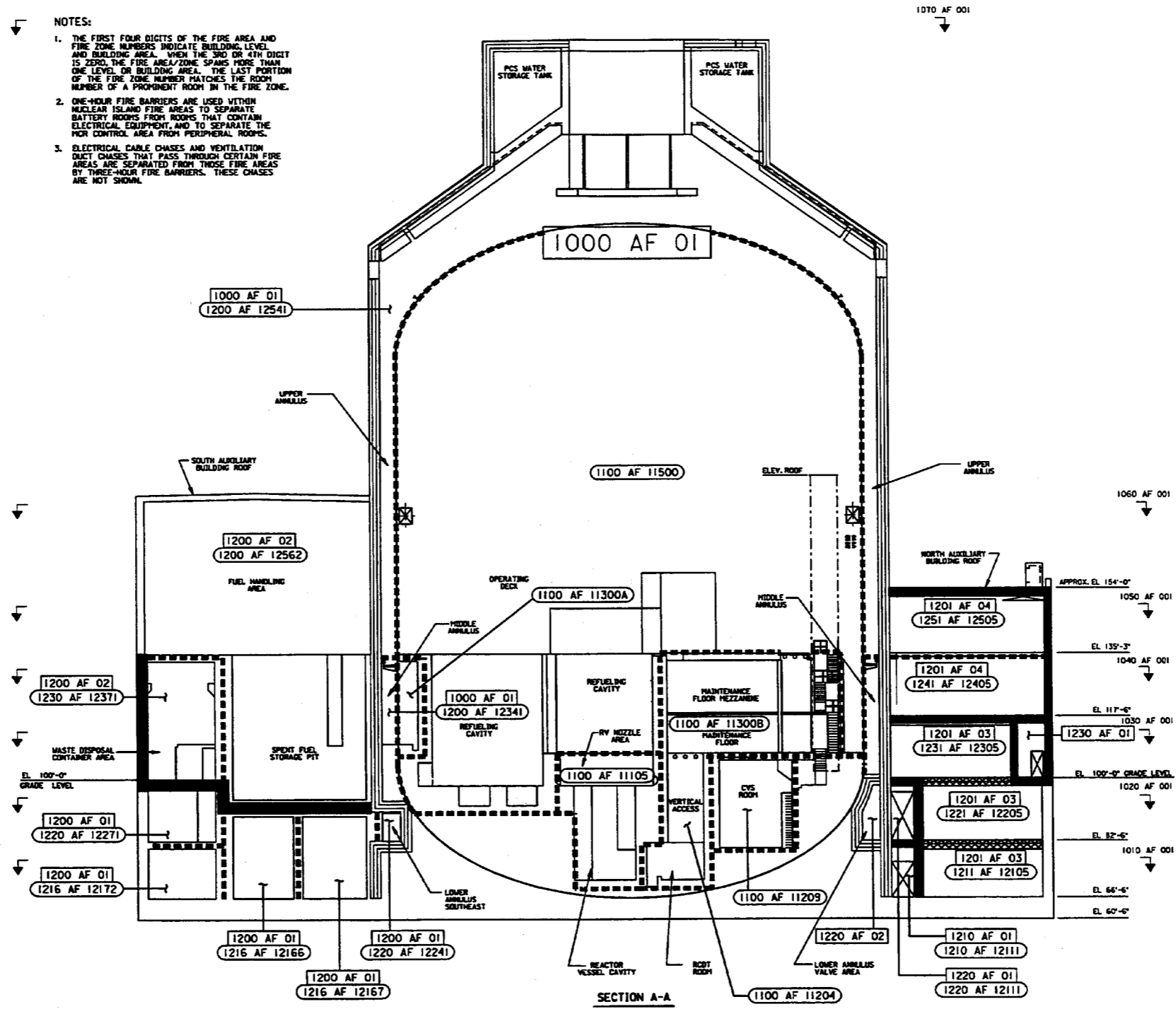


Figure 9A-1 (Sheet 10 of 16)

[Nuclear Island Fire Area Section A-A]\*

\*NRC Staff approval is required prior to implementing a change in this information; see DCD Introduction Section 3.5.

NOTES:

1. THE FIRST FOUR DIGITS OF THE FIRE AREA AND FIRE ZONE NUMBERS INDICATE BUILDING LEVEL AND BUILDING AREA. WHEN THE 3RD OR 4TH DIGIT IS ZERO, THE FIRE AREA/ZONE SPANS MORE THAN ONE LEVEL OR BUILDING AREA. THE LAST PORTION OF THE FIRE ZONE NUMBER MATCHES THE ROOM NUMBER OF A PROMINENT ROOM IN THE FIRE ZONE.
2. ONE-HOUR FIRE BARRIERS ARE USED WITHIN NUCLEAR ISLAND FIRE AREAS TO SEPARATE BATTERY ROOMS FROM ROOMS THAT CONTAIN ELECTRICAL EQUIPMENT, AND TO SEPARATE THE MCR CONTROL AREA FROM PERIPHERAL ROOMS.
3. ELECTRICAL CABLE CHASES AND VENTILATION DUCT CHASES THAT PASS THROUGH CERTAIN FIRE AREAS ARE SEPARATED FROM THOSE FIRE AREAS BY THREE-HOUR FIRE BARRIERS. THESE CHASES ARE NOT SHOWN.

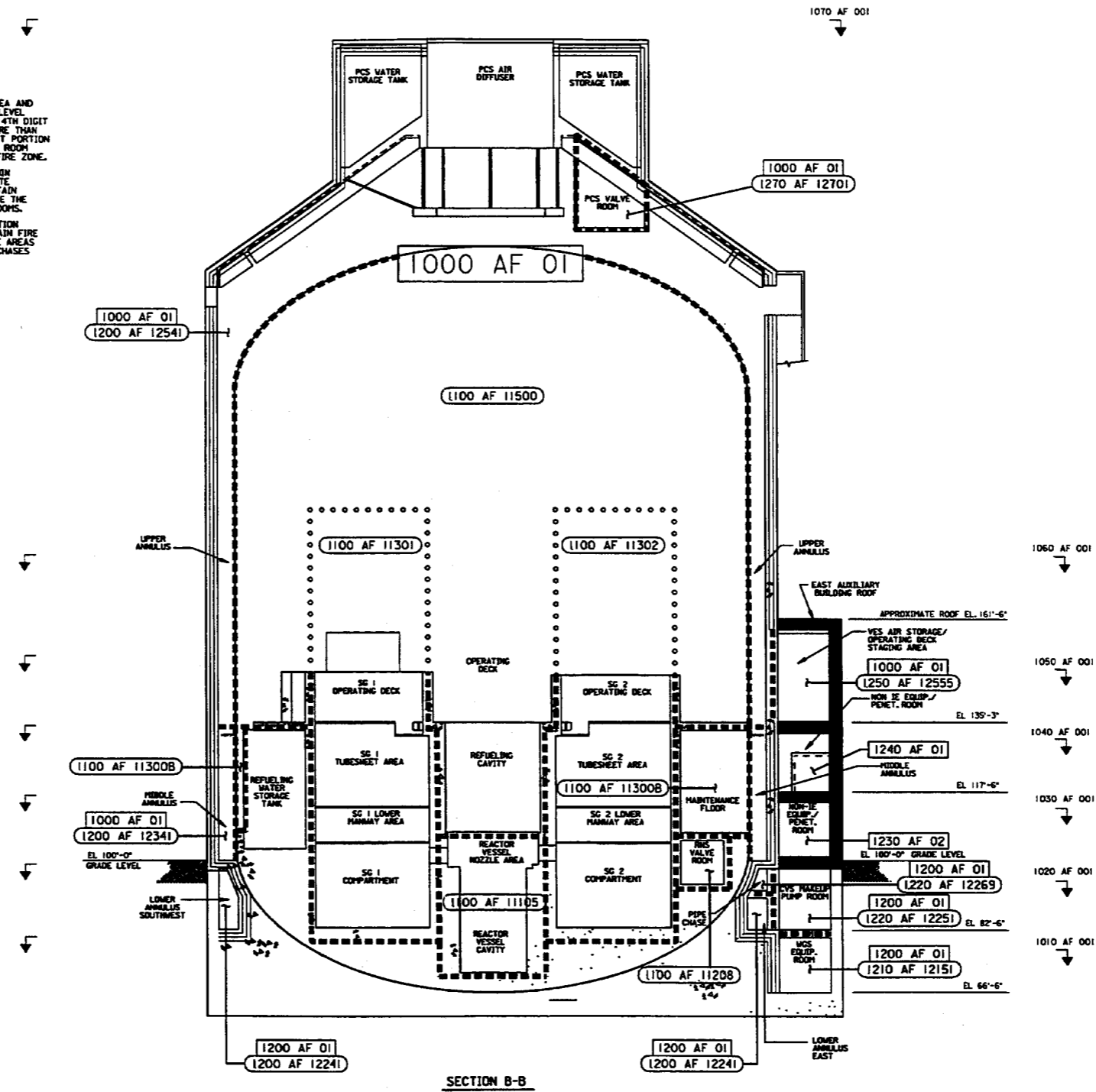


Figure 9A-1 (Sheet 11 of 16)

[Nuclear Island Fire Area Section B-B]\*

\*NRC Staff approval is required prior to implementing a change in this information; see DCD Introduction Section 3.5.

NOTES:

1. THE FIRST FOUR DIGITS OF THE FIRE AREA AND FIRE ZONE NUMBERS INDICATE BUILDING, LEVEL AND BUILDING AREA. WHEN THE 3RD OR 4TH DIGIT IS ZERO, THE FIRE AREA/ZONE SPANS MORE THAN ONE LEVEL OR BUILDING AREA. THE LAST PORTION OF THE FIRE ZONE NUMBER MATCHES THE ROOM NUMBER OF A PROMINENT ROOM IN THE FIRE ZONE.
2. ONE-HOUR FIRE BARRIERS ARE USED WITHIN NUCLEAR ISLAND FIRE AREAS TO SEPARATE BATTERY ROOMS FROM ROOMS THAT CONTAIN ELECTRICAL EQUIPMENT, AND TO SEPARATE THE MCR CONTROL AREA FROM PERIPHERAL ROOMS.
3. ELECTRICAL CABLE CHASES AND VENTILATION DUCT CHASES THAT PASS THROUGH CERTAIN FIRE AREAS ARE SEPARATED FROM THOSE FIRE AREAS BY THREE-HOUR FIRE BARRIERS. THESE CHASES ARE NOT SHOWN.

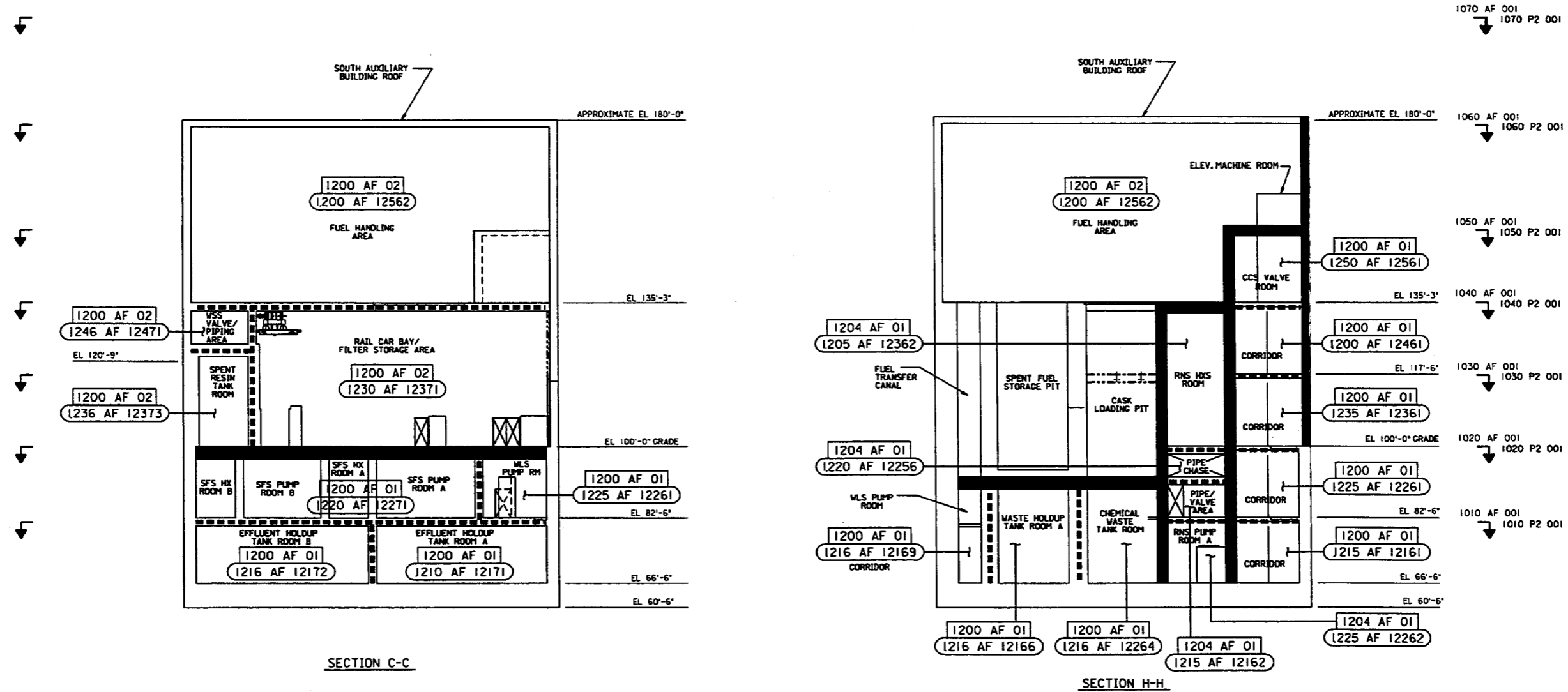


Figure 9A-1 (Sheet 12 of 16)

[Nuclear Island Fire Area Section C-C & H-H]\*

\*NRC Staff approval is required prior to implementing a change in this information; see DCD Introduction Section 3.5.



NOTES:

1. THE FIRST FOUR DIGITS OF THE FIRE AREA AND FIRE ZONE NUMBERS INDICATE BUILDING, LEVEL AND BUILDING AREA. WHEN THE 3RD OR 4TH DIGIT IS ZERO, THE FIRE AREA/ZONE SPANS MORE THAN ONE LEVEL OR BUILDING AREA. THE LAST PORTION OF THE FIRE ZONE NUMBER MATCHES THE ROOM NUMBER OF A PROMINENT ROOM IN THE FIRE ZONE.
2. ONE-HOUR FIRE BARRIERS ARE USED WITHIN NUCLEAR ISLAND FIRE AREAS TO SEPARATE BATTERY ROOMS FROM ROOMS THAT CONTAIN ELECTRICAL EQUIPMENT, AND TO SEPARATE THE MCR CONTROL AREA FROM PERIPHERAL ROOMS.
3. ELECTRICAL CABLE CHASES AND VENTILATION DUCT CHASES THAT PASS THROUGH CERTAIN FIRE AREAS ARE SEPARATED FROM THOSE FIRE AREAS BY THREE-HOUR FIRE BARRIERS. THESE CHASES ARE NOT SHOWN.

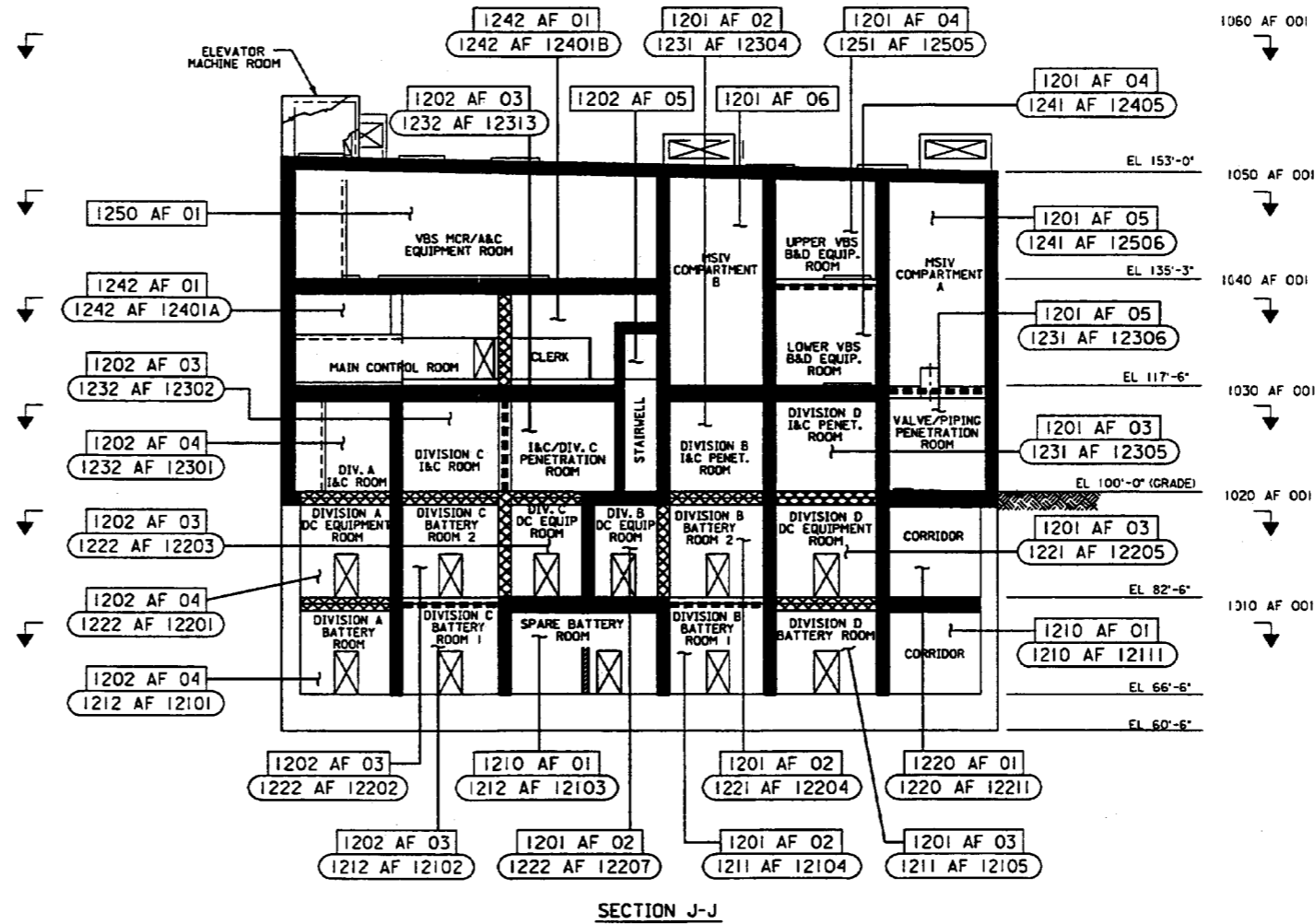


Figure 9A-1 (Sheet 14 of 16)

[Nuclear Island Fire Area Section J-J]\*

\*NRC Staff approval is required prior to implementing a change in this information; see DCD Introduction Section 3.5.

NOTES:

1. THE FIRST FOUR DIGITS OF THE FIRE AREA AND FIRE ZONE NUMBERS INDICATE BUILDING, LEVEL AND BUILDING AREA. WHEN THE 3RD OR 4TH DIGIT IS ZERO, THE FIRE AREA/ZONE SPANS MORE THAN ONE LEVEL OR BUILDING AREA. THE LAST PORTION OF THE FIRE ZONE NUMBER MATCHES THE ROOM NUMBER OF A PROMINENT ROOM IN THE FIRE ZONE.
2. ONE-HOUR FIRE BARRIERS ARE USED WITHIN NUCLEAR ISLAND FIRE AREAS TO SEPARATE BATTERY ROOMS FROM ROOMS THAT CONTAIN ELECTRICAL EQUIPMENT, AND TO SEPARATE THE MCR CONTROL AREA FROM PERIPHERAL ROOMS.
3. ELECTRICAL CABLE CHASES AND VENTILATION DUCT CHASES THAT PASS THROUGH CERTAIN FIRE AREAS ARE SEPARATED FROM THOSE FIRE AREAS BY THREE-HOUR FIRE BARRIERS. THESE CHASES ARE NOT SHOWN.

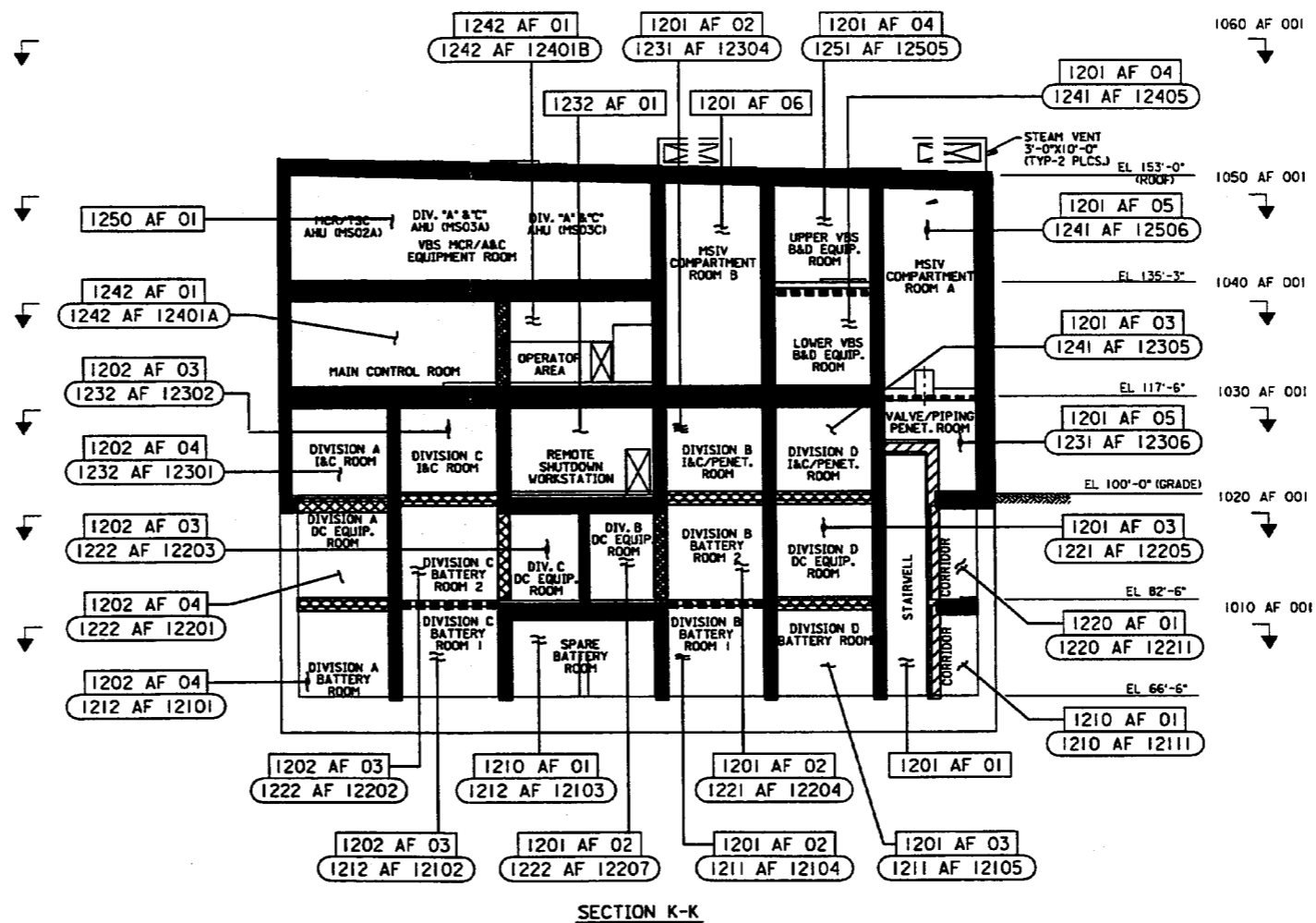
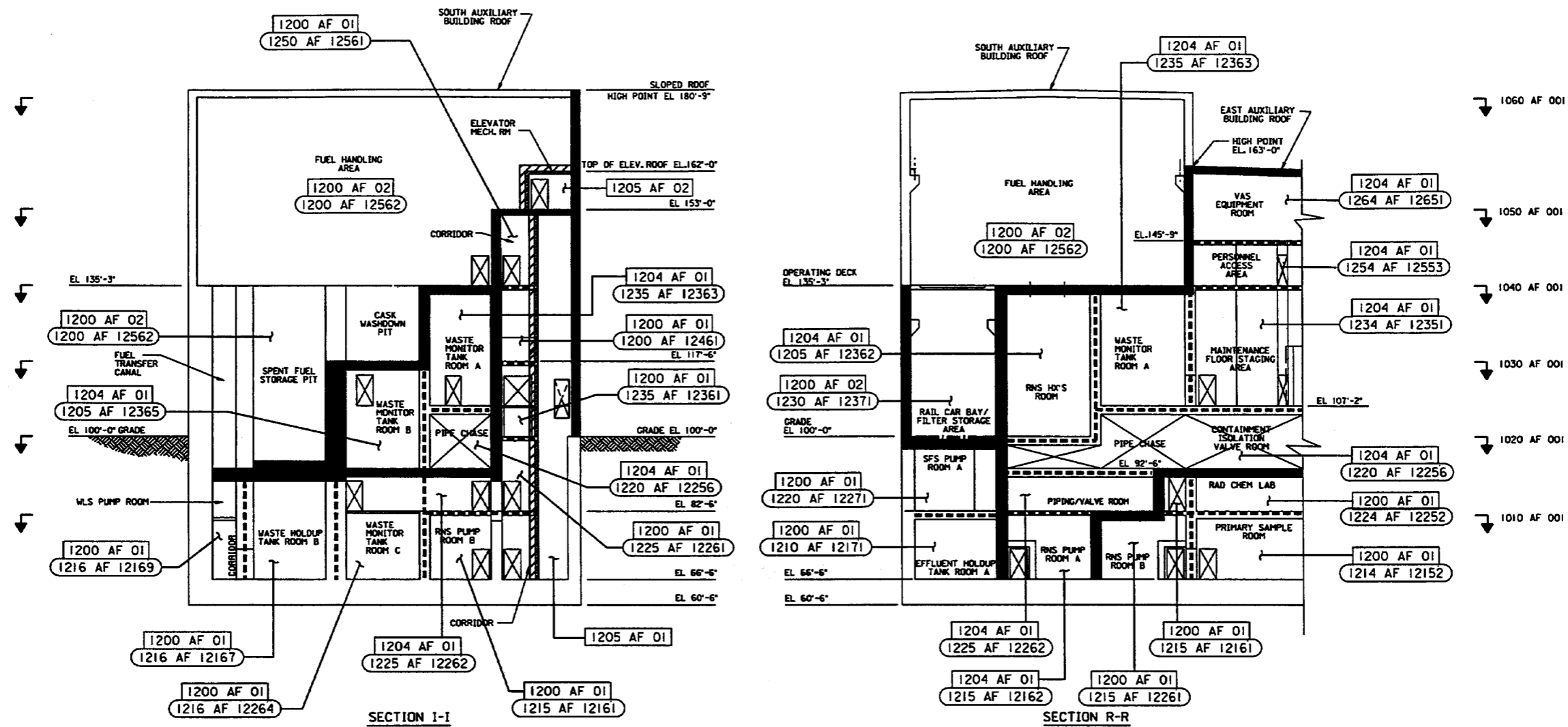


Figure 9A-1 (Sheet 15 of 16)

[Nuclear Island Fire Area Section K-K]\*

\*NRC Staff approval is required prior to implementing a change in this information; see DCD Introduction Section 3.5.



NOTES:

1. THE FIRST FOUR DIGITS OF THE FIRE AREA AND FIRE ZONE NUMBERS INDICATE BUILDING, LEVEL AND BUILDING AREA. WHEN THE 3RD OR 4TH DIGIT IS ZERO, THE FIRE AREA/ZONE SPANS MORE THAN ONE LEVEL OR BUILDING AREA. THE LAST PORTION OF THE FIRE ZONE NUMBER MATCHES THE ROOM NUMBER OF A PROMINENT ROOM IN THE FIRE ZONE.
2. ONE-HOUR FIRE BARRIERS ARE USED WITHIN NUCLEAR ISLAND FIRE AREAS TO SEPARATE BATTERY ROOMS FROM ROOMS THAT CONTAIN ELECTRICAL EQUIPMENT, AND TO SEPARATE THE MCR CONTROL AREA FROM PERIPHERAL ROOMS.
3. ELECTRICAL CABLE CHASES AND VENTILATION DUCT CHASES THAT PASS THROUGH CERTAIN FIRE AREAS ARE SEPARATED FROM THOSE FIRE AREAS BY THREE-HOUR FIRE BARRIERS. THESE CHASES ARE NOT SHOWN.

Figure 9A-1 (Sheet 16 of 16)

[Nuclear Island Fire Area Section I-I & R-R]\*

\*NRC Staff approval is required prior to implementing a change in this information; see DCD Introduction Section 3.5.

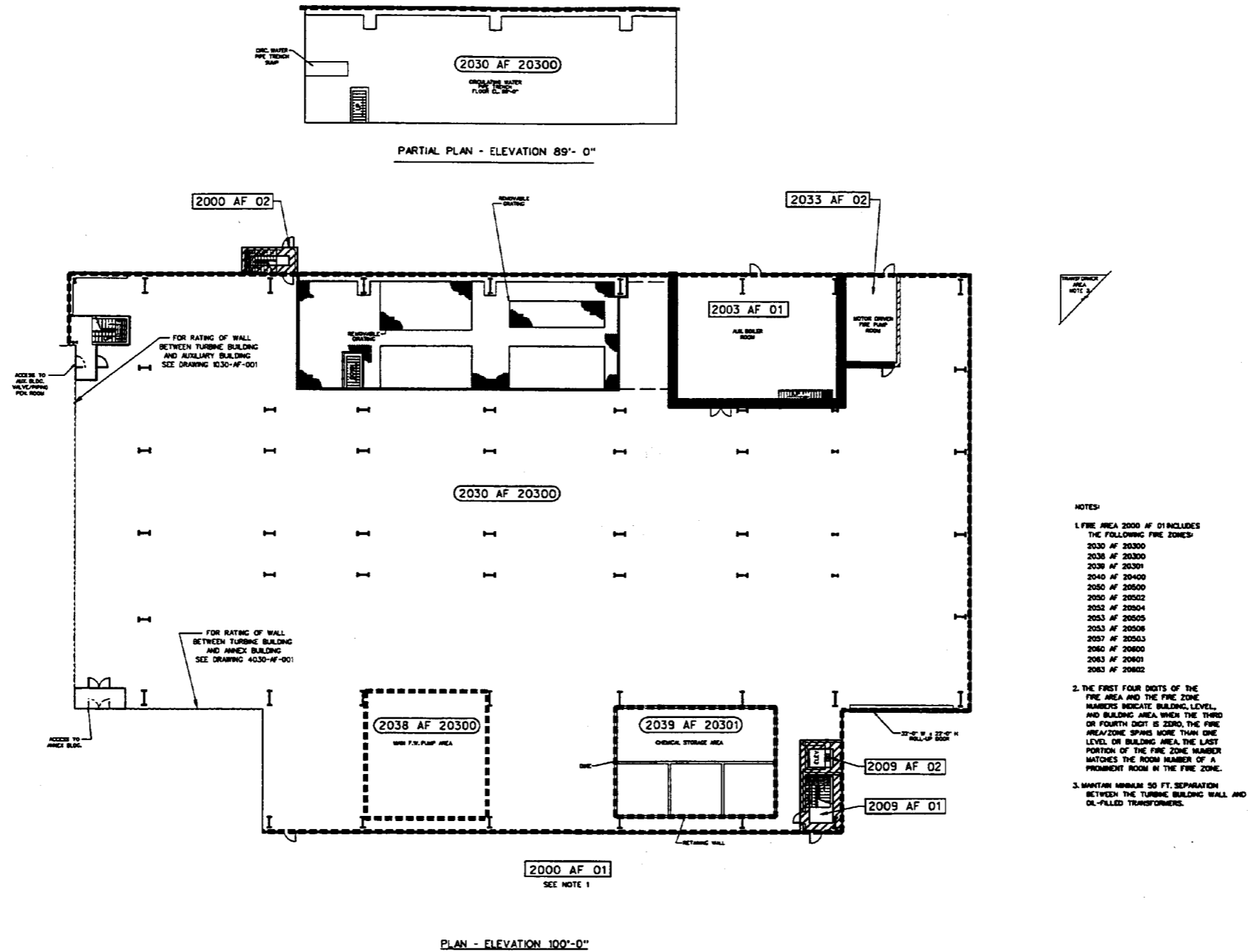


Figure 9A-2 (Sheet 1 of 5)

[Turbine Building Fire Area Plan at Elevation 100'-0"]\*

\*NRC Staff approval is required prior to implementing a change in this information; see DCD Introduction Section 3.5.



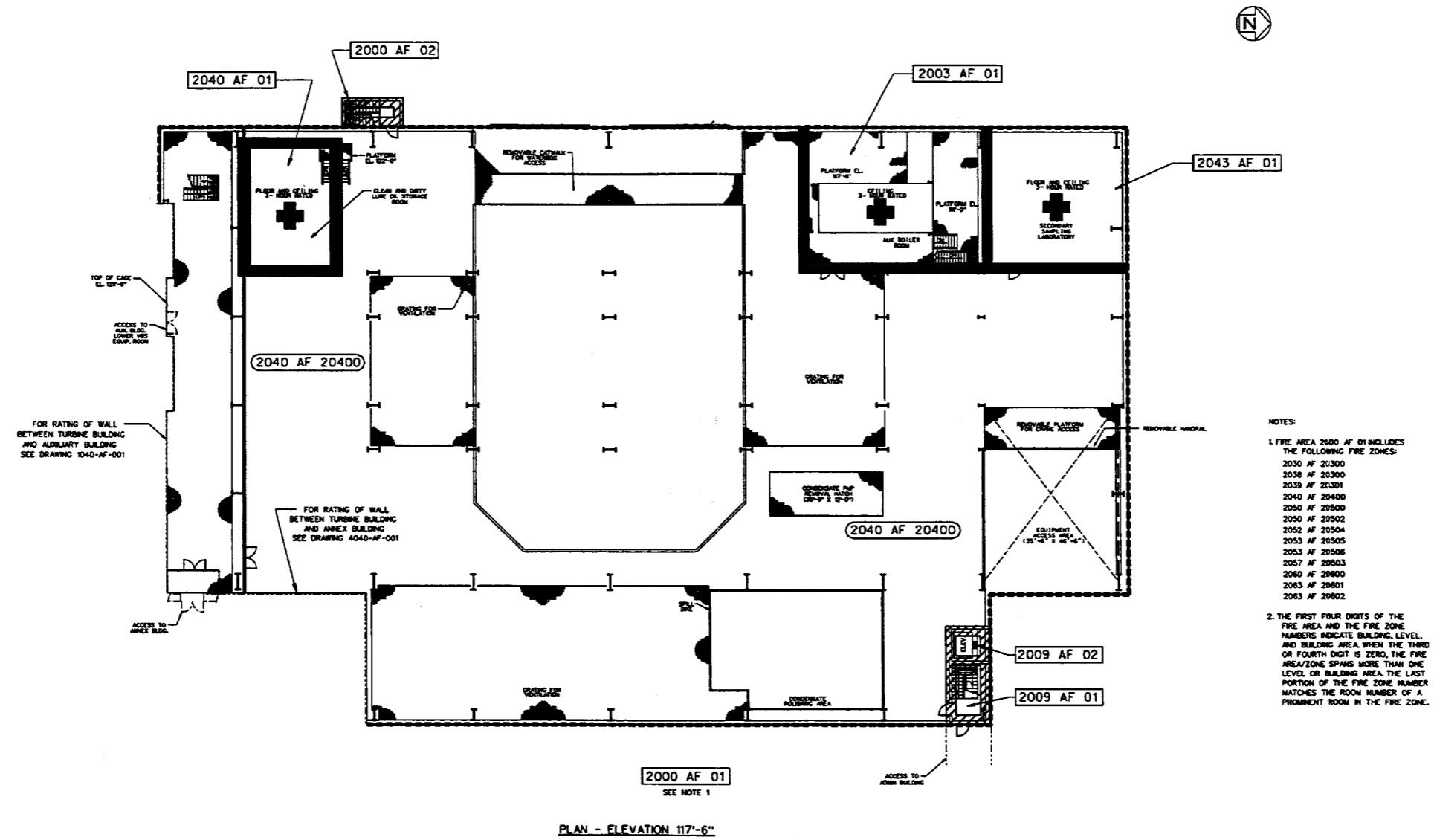


Figure 9A-2 (Sheet 2 of 5)

[Turbine Building Fire Area Plan at Elevation 117'-6"]\*

\*NRC Staff approval is required prior to implementing a change in this information; see DCD Introduction Section 3.5.

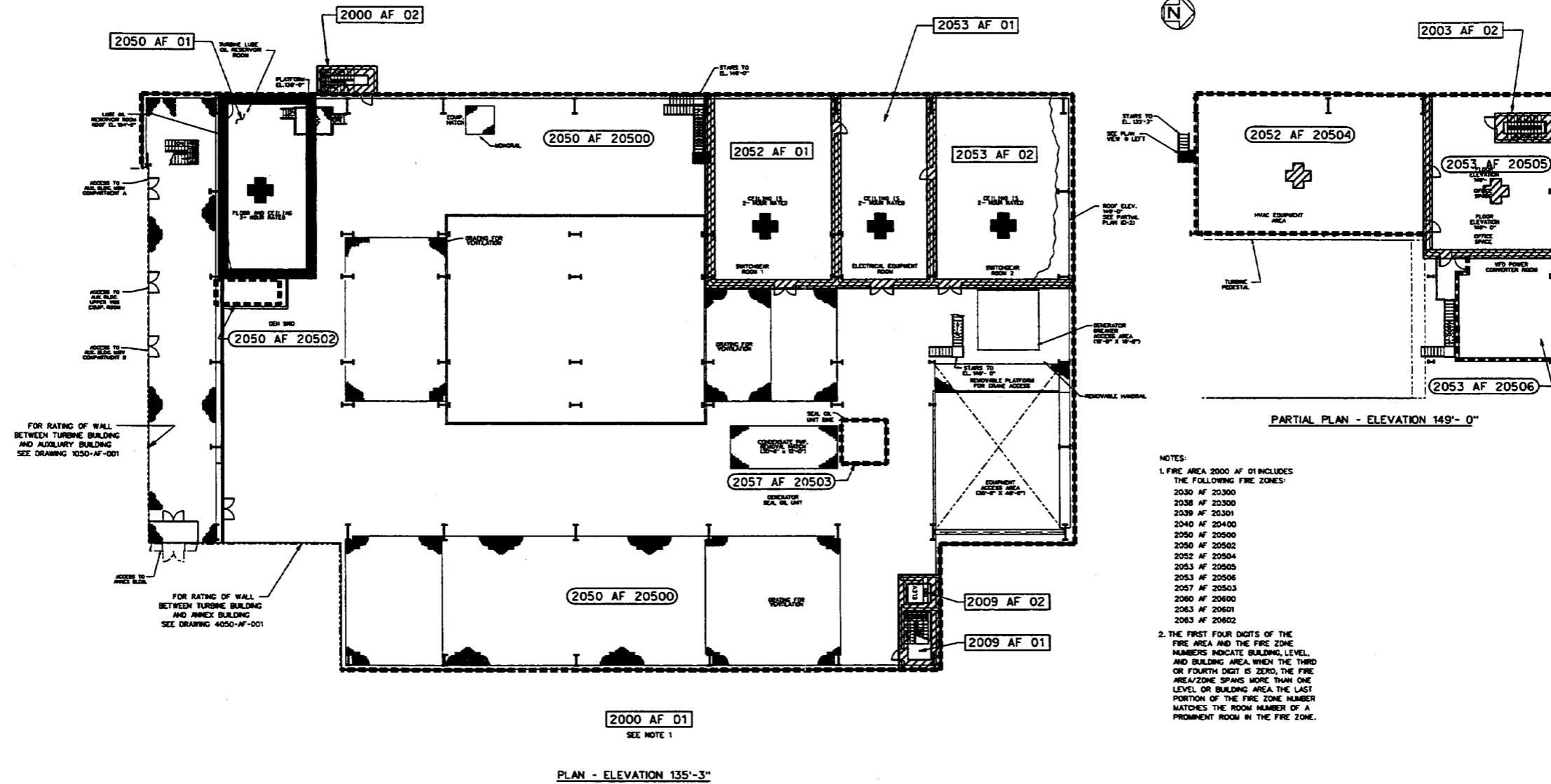
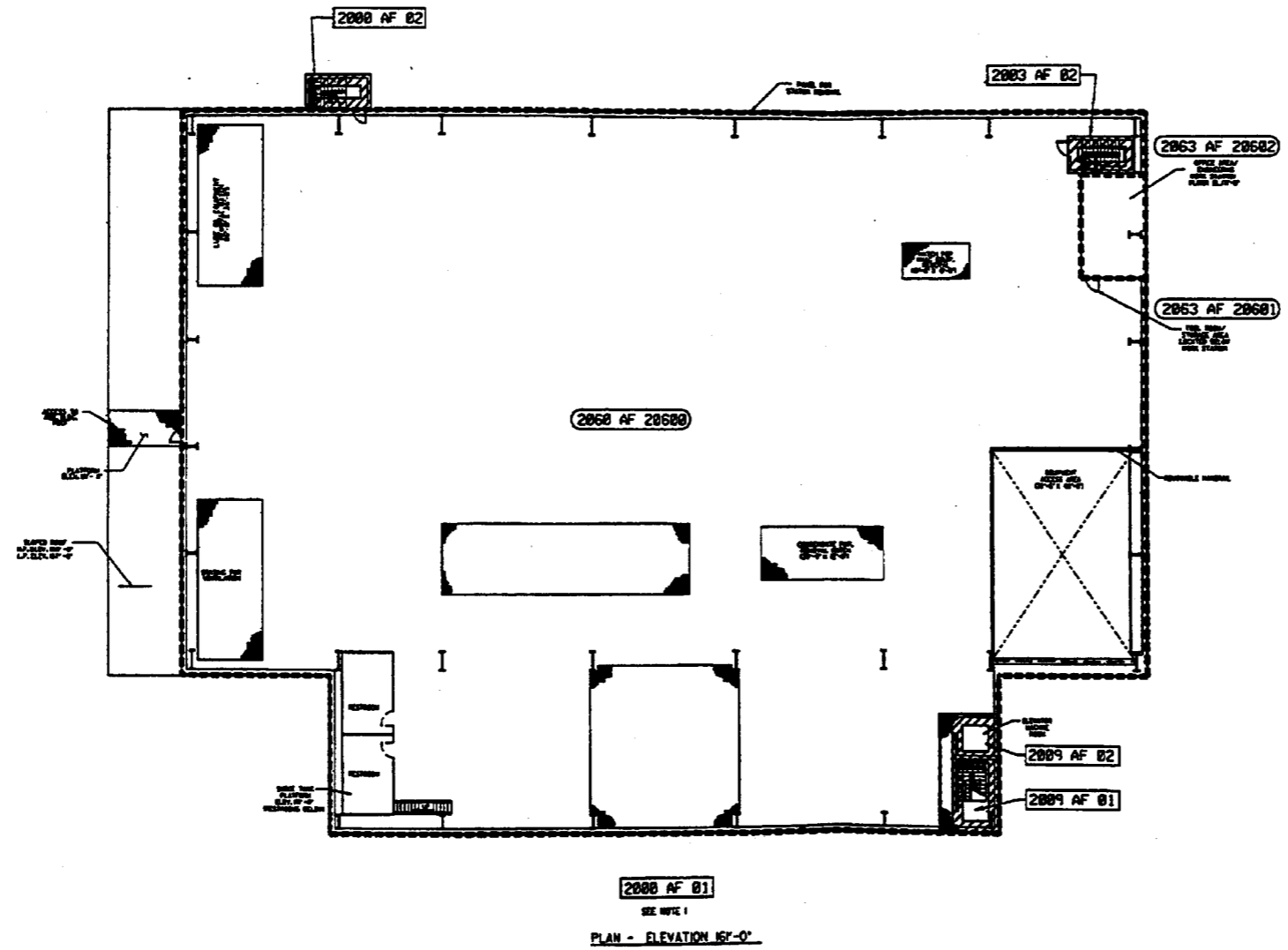


Figure 9A-2 (Sheet 3 of 5)

[Turbine Building Fire Area Plan at Elevation 135'-3"]\*

\*NRC Staff approval is required prior to implementing a change in this information; see DCD Introduction Section 3.5.



- NOTES:
1. FIRE AREA 2000 AF ENCLOSES THE FOLLOWING FIRE ZONES:  
 2030 AF 20300  
 2030 AF 20300  
 2030 AF 20300  
 2040 AF 20400  
 2050 AF 20500  
 2050 AF 20500  
 2052 AF 20504  
 2053 AF 20505  
 2053 AF 20506  
 2057 AF 20503  
 2060 AF 20600  
 2063 AF 20600  
 2063 AF 20600
  2. THE FIRST FOUR DIGITS OF THE FIRE AREA AND THE FIRE ZONE NUMBERS INDICATE BUILDING LEVEL AND BUILDING AREA. WHEN THE THIRD OR FOURTH DIGIT IS ZERO, THE FIRE AREA/ZONE SPANS MORE THAN ONE LEVEL OR BUILDING AREA. THE LAST PORTION OF THE FIRE ZONE NUMBER MATCHES THE ROOM NUMBER OF A PROMINENT ROOM IN THE FIRE ZONE.

Figure 9A-2 (Sheet 4 of 5)  
 [Turbine Building Fire Areas  
 Plan at Elevation 161'-0"]\*

\*NRC Staff approval is required prior to implementing a change in this information; see DCD Introduction Section 3.5.



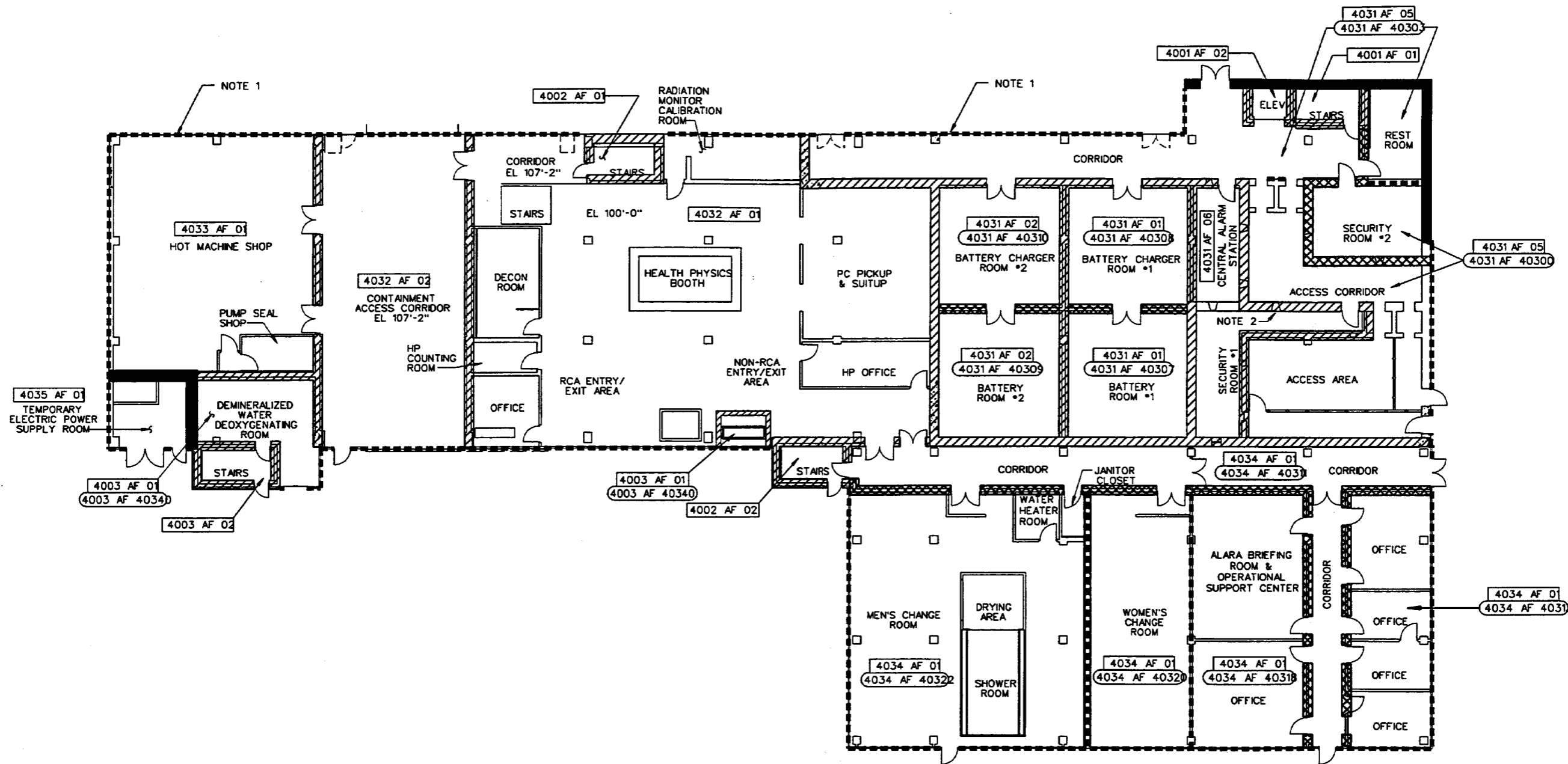
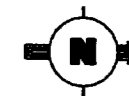


Figure 9A-3 (Sheet 1 of 3)

[Annex I & II Building Fire Areas Plan at Elevation 100'-0" & 107'-2"]\*

\*NRC Staff approval is required prior to implementing a change in this information; see DCD Introduction Section 3.5.

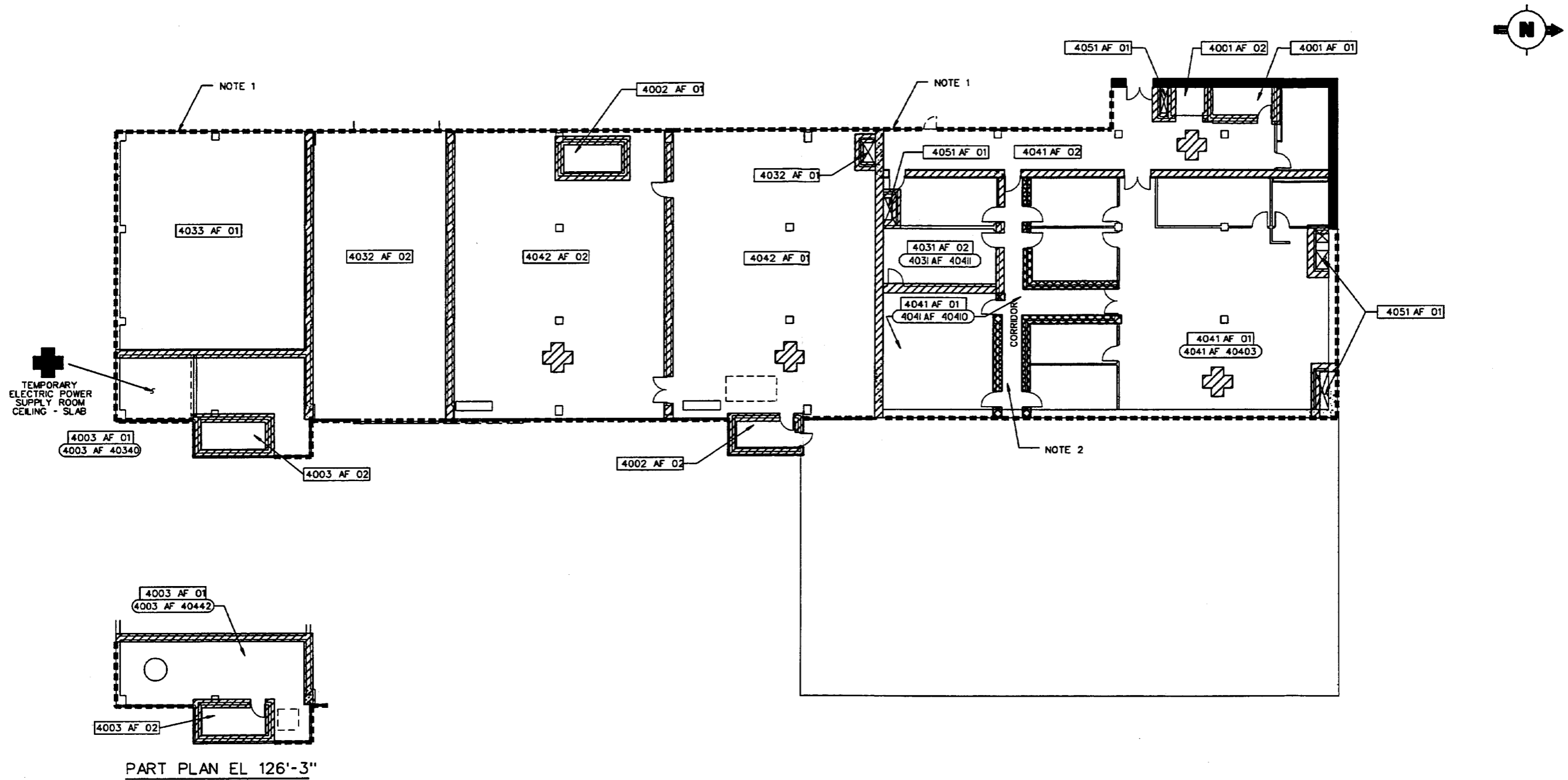


Figure 9A-3 (Sheet 2 of 3)

[Annex I & II Buildings Fire Areas Plan at Elevation 117'-6"]\*

\*NRC Staff approval is required prior to implementing a change in this information; see DCD Introduction Section 3.5.

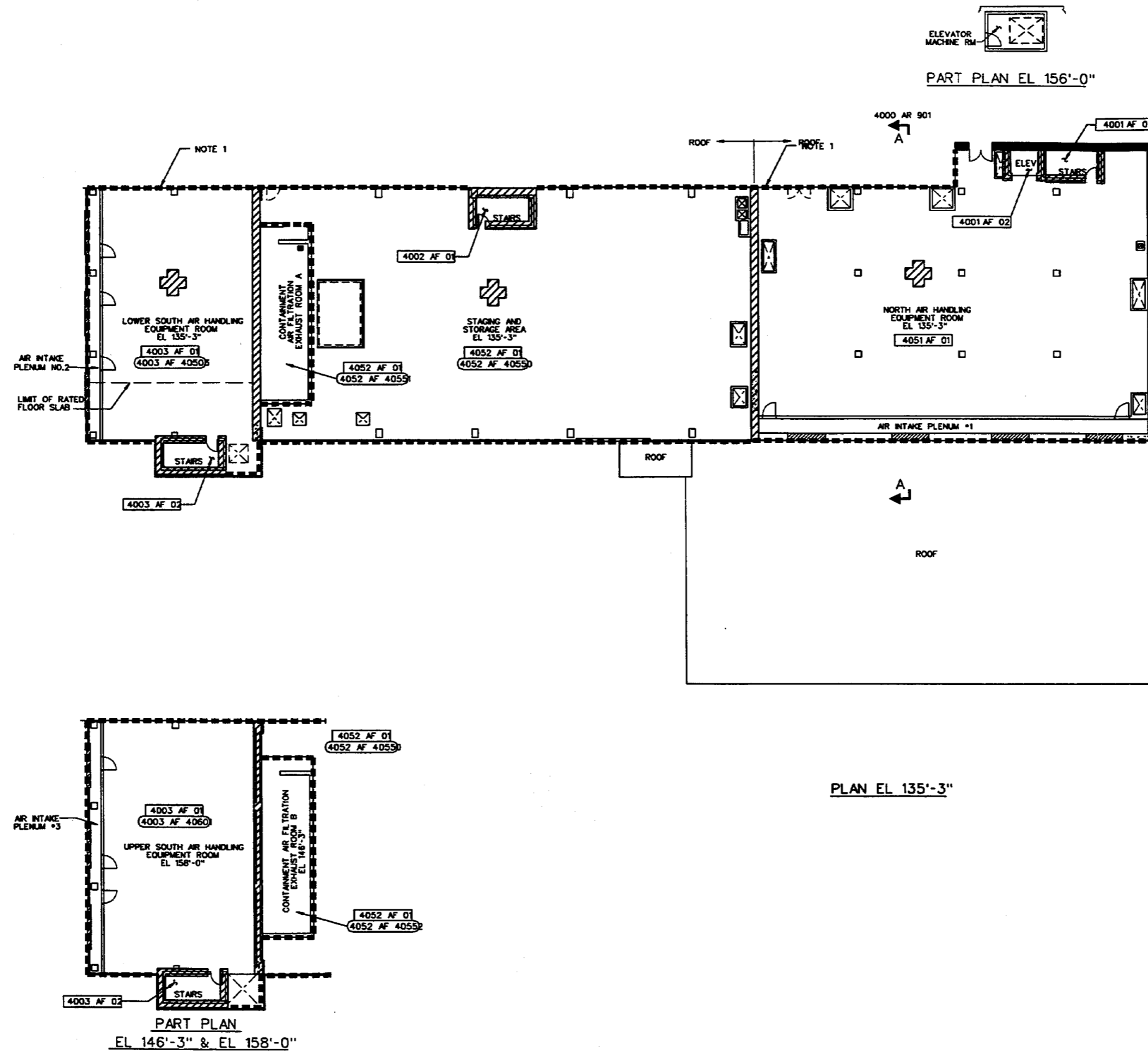


Figure 9A-3 (Sheet 3 of 3)

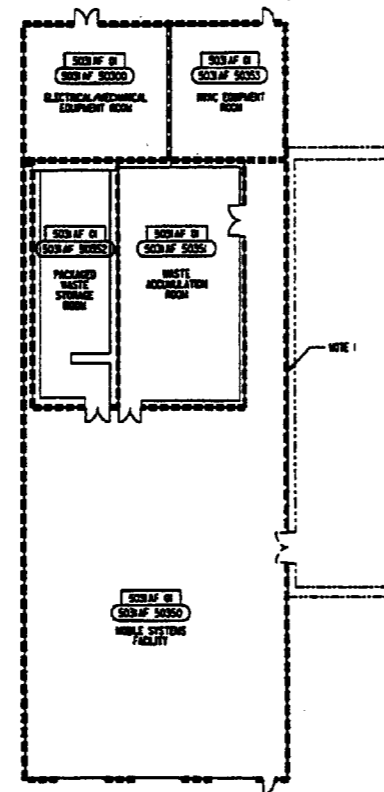
[Annex I & II Building Fire Areas  
Plan at Elevation 135'-3"]\*

\*NRC Staff approval is required prior to implementing a change in this information; see DCD Introduction Section 3.5.



**NOTE**

1. THE BATTING OF WALL BETWEEN  
ADJACENT BUILDING AREAS  
SHALL BE AS SHOWN, EQUIVALENT  
BATTING, OR OTHER EQUIVALENT  
BATTING AND ESCALATOR.



PLAN EL 100'-0"

Figure 9A-4

[Radwaste Building Fire Areas  
Plan at Elevation 100'-0"]\*

\*NRC Staff approval is required prior to implementing a change in this information; see DCD Introduction Section 3.5.



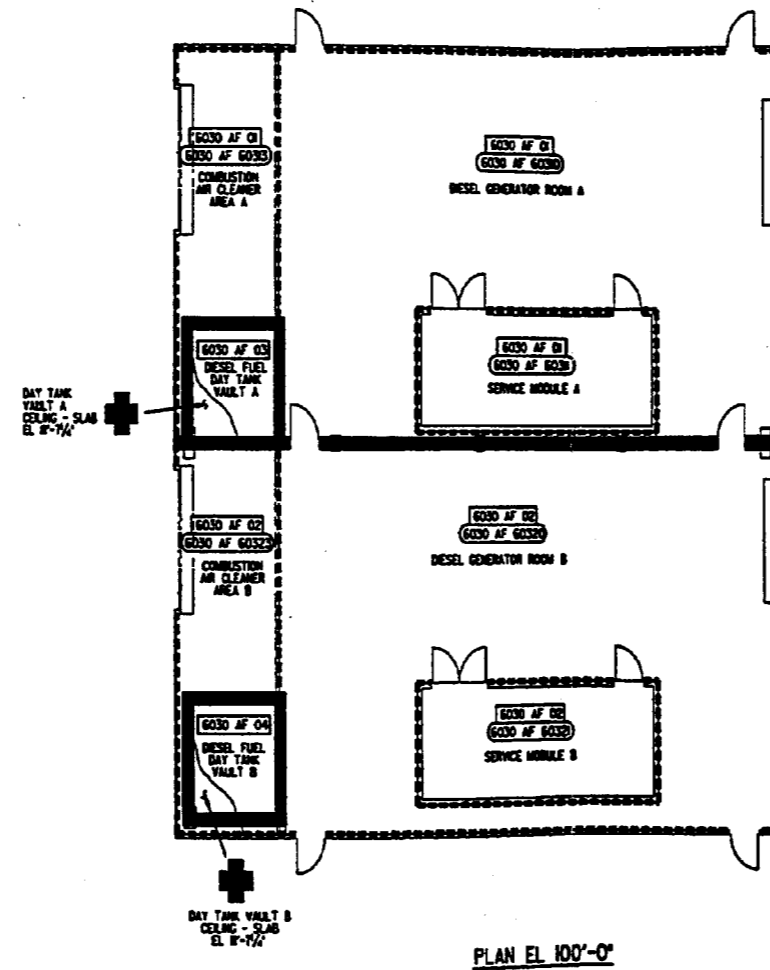


Figure 9A-5

[Diesel Generator Building Fire Areas  
Plan at Elevation 100'-0']\*

\*NRC Staff approval is required prior to implementing a change in this information; see DCD Introduction Section 3.5.