

Figure 3.8.3-8 (Sheet 2 of 3)

[Structural Modules - Typical Design Details]*

*NRC Staff approval is required prior to implementing a change in this material; see DCD Introduction Section 3.5.

[This page intentionally blank]

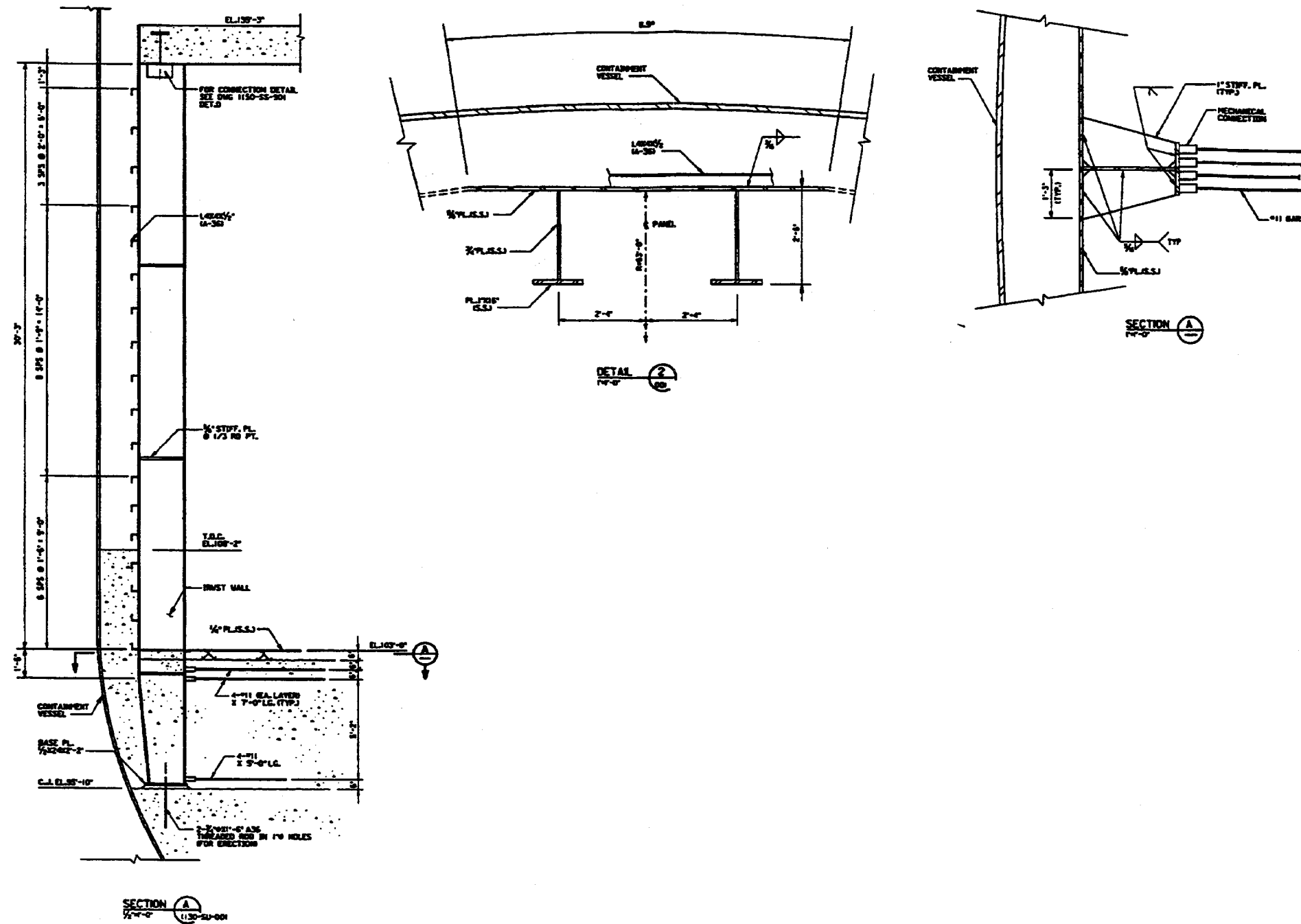


Figure 3.8.3-8 (Sheet 3 of 3)

[Structural Modules - Typical Design Details]*

*NRC Staff approval is required prior to implementing a change in this material; see DCD Introduction Section 3.5.

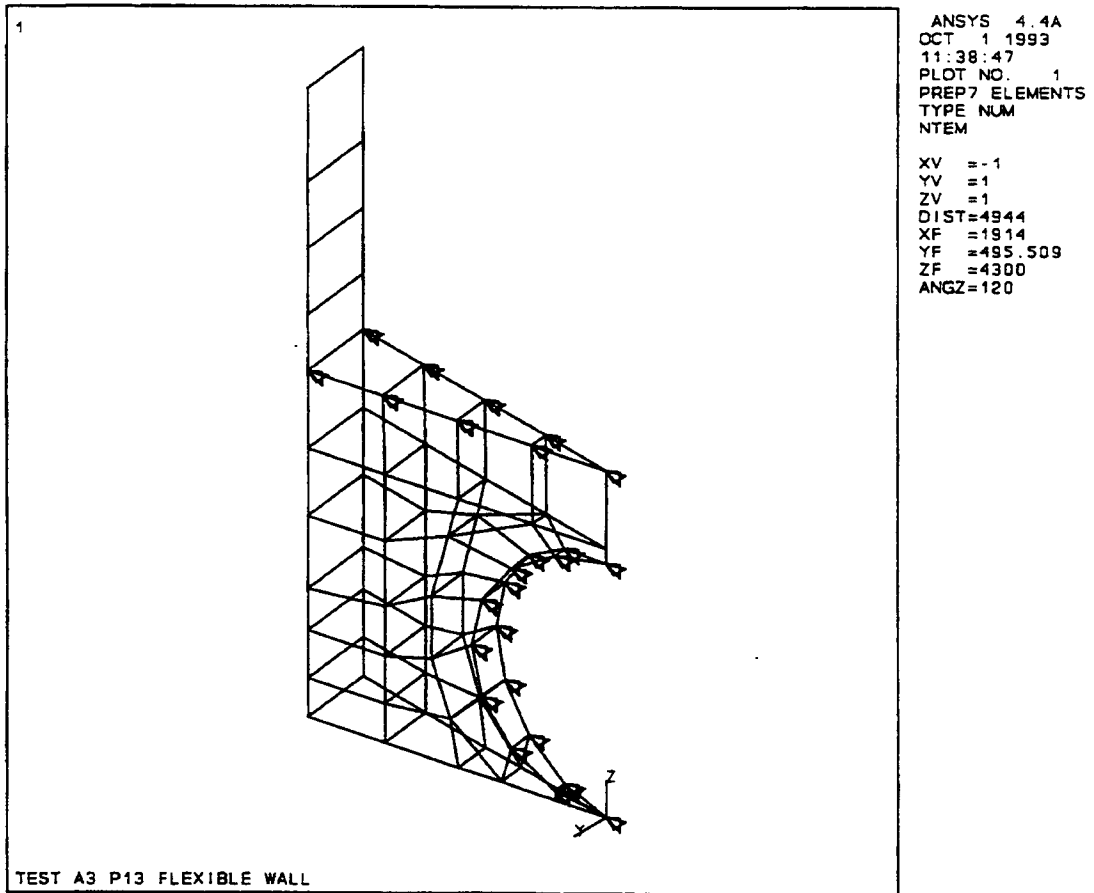


Figure 3.8.3-9

Test Tank Finite Element Model

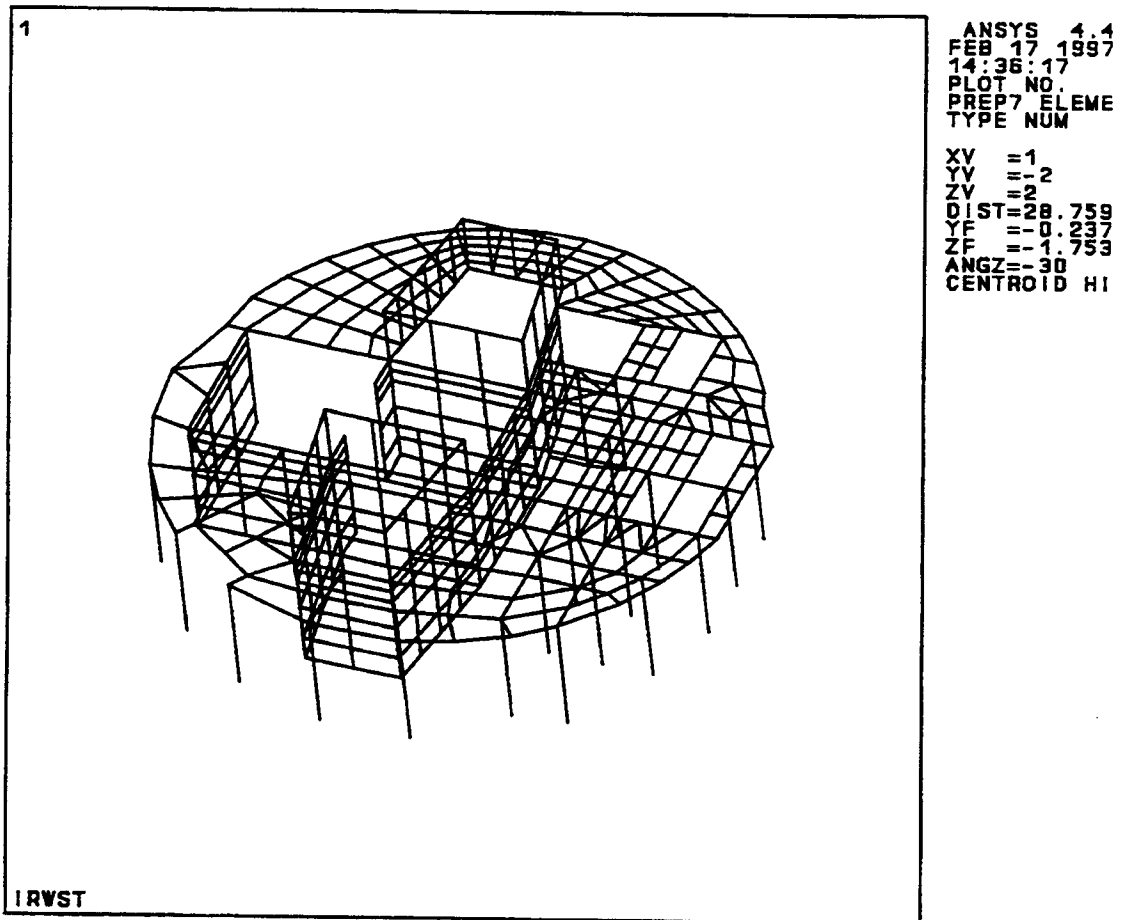


Figure 3.8.3-10 (Sheet 1 of 2)

IRWST Fluid Structure Finite Element Model
CIS Structural Model

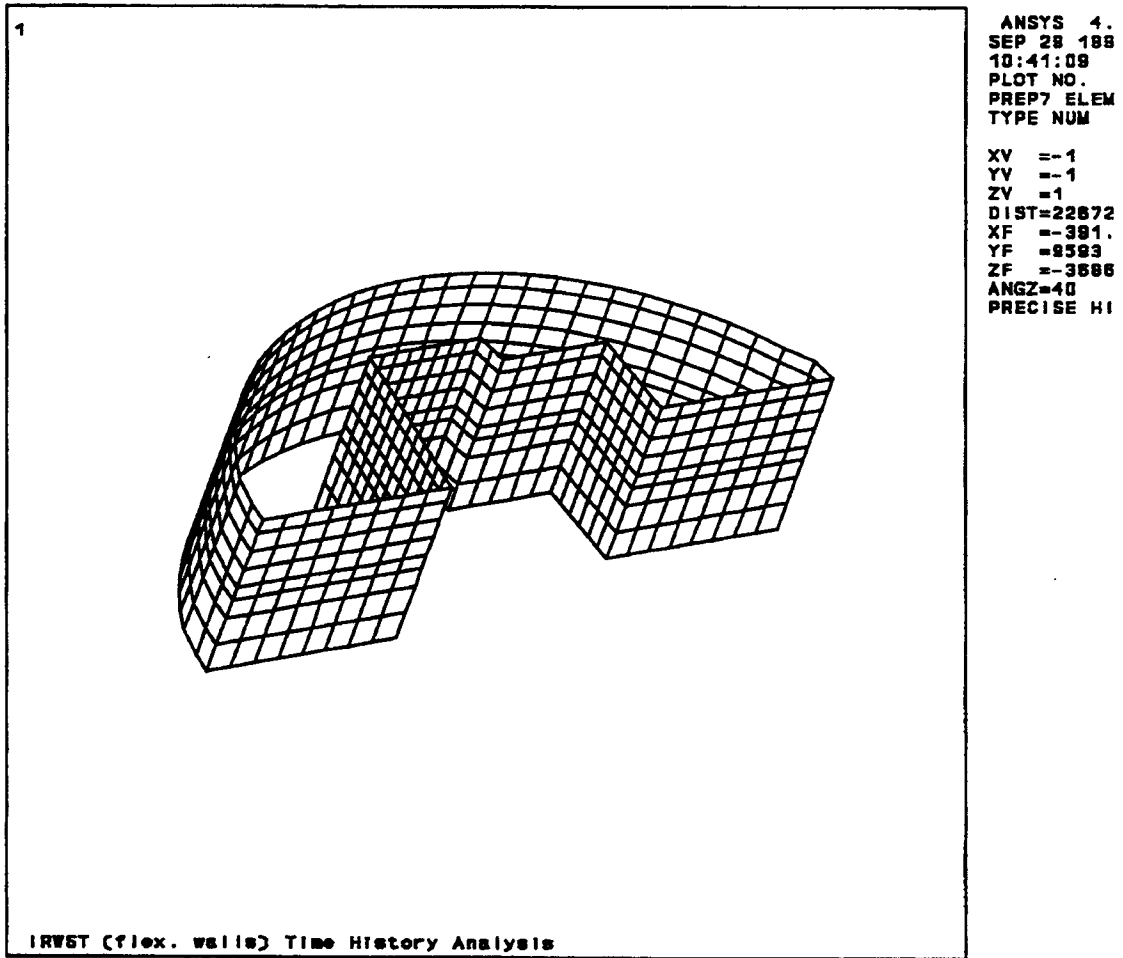


Figure 3.8.3-10 (Sheet 2 of 2)

**IRWST Fluid Structure Finite Element Model
IRWST Structural Model**

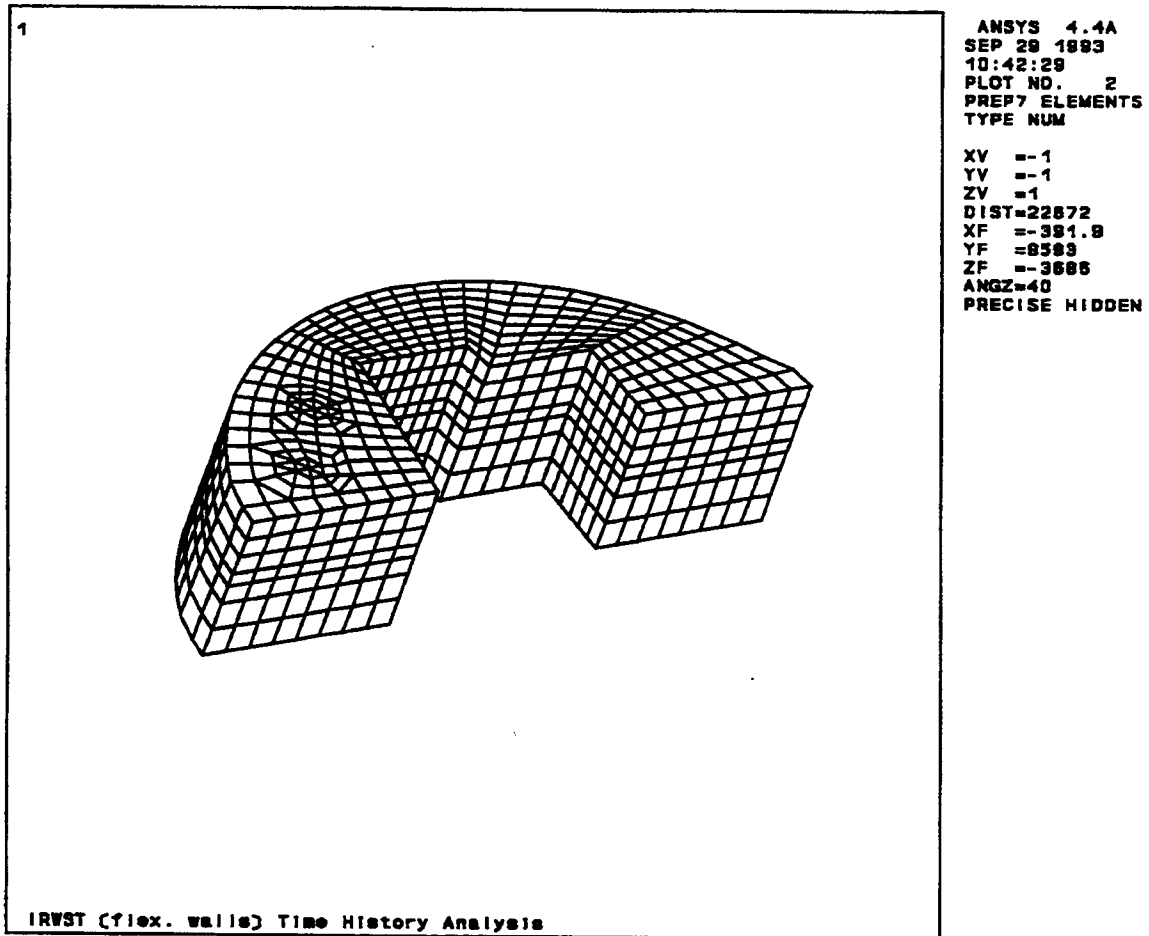


Figure 3.8.3-11

**IRWST Fluid Structure Finite Element Model
Fluid Model**

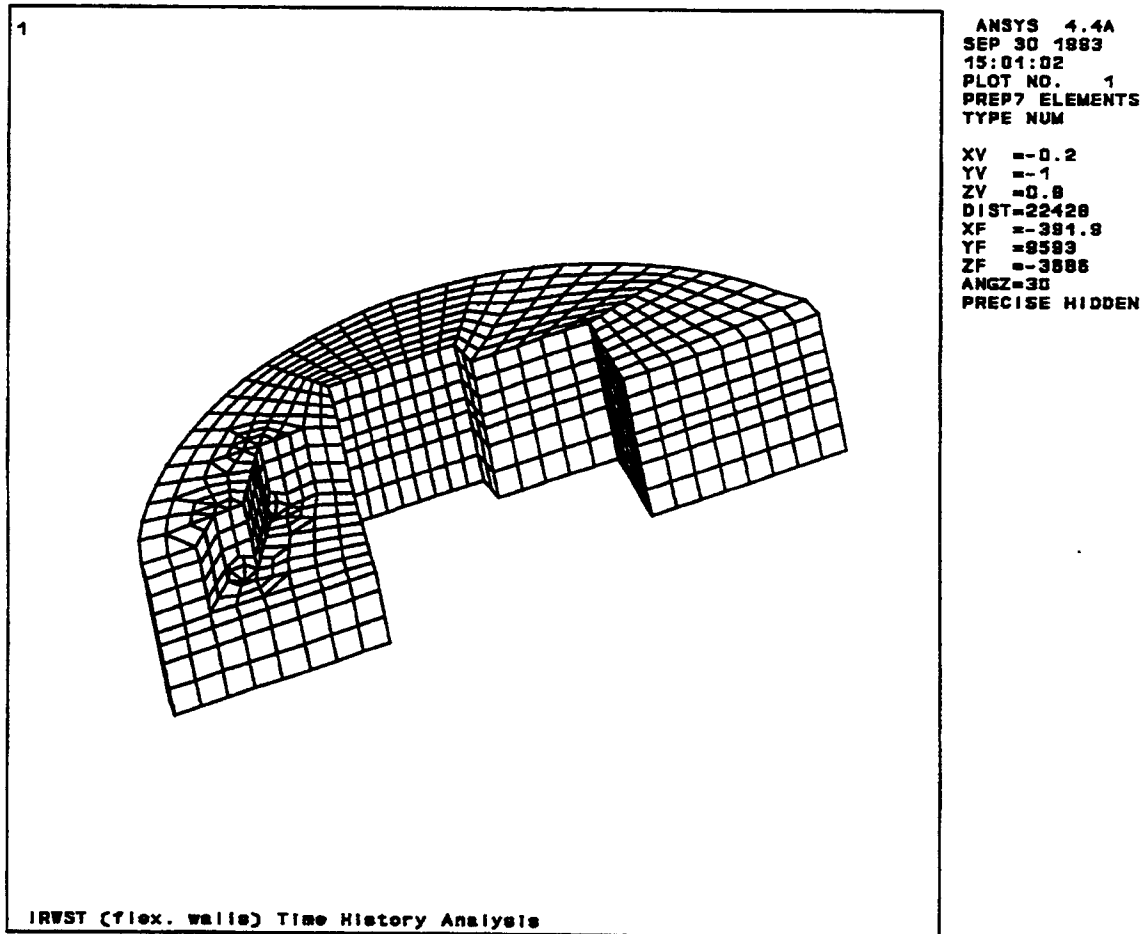
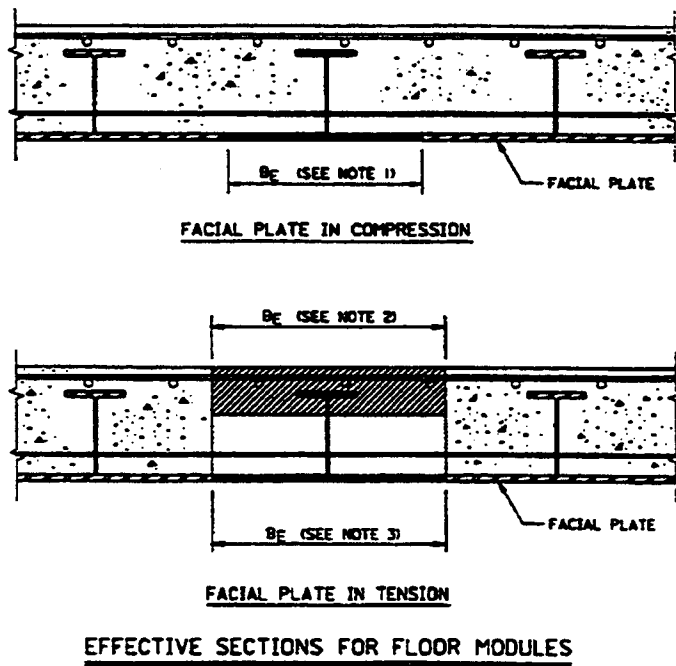


Figure 3.8.3-12

IRWST Fluid Structure Finite Element Model
Sparger Region Detail



NOTES:

1. FOR FACIAL PLATE IN COMPRESSION, b_e IS DETERMINED PER SECTION 3.8.3.5.4.2
2. EFFECTIVE WIDTH OF CONCRETE, b_e IS DETERMINED PER SECTION Q.1.11.1 OF AISC W690.
3. FOR FACIAL PLATE IN TENSION, b_e IS TAKEN TO BE ONE HALF OF THE DISTANCE TO THE ADJACENT BEAMS.

Figure 3.8.3-13

Effective Sections for Floor Modules

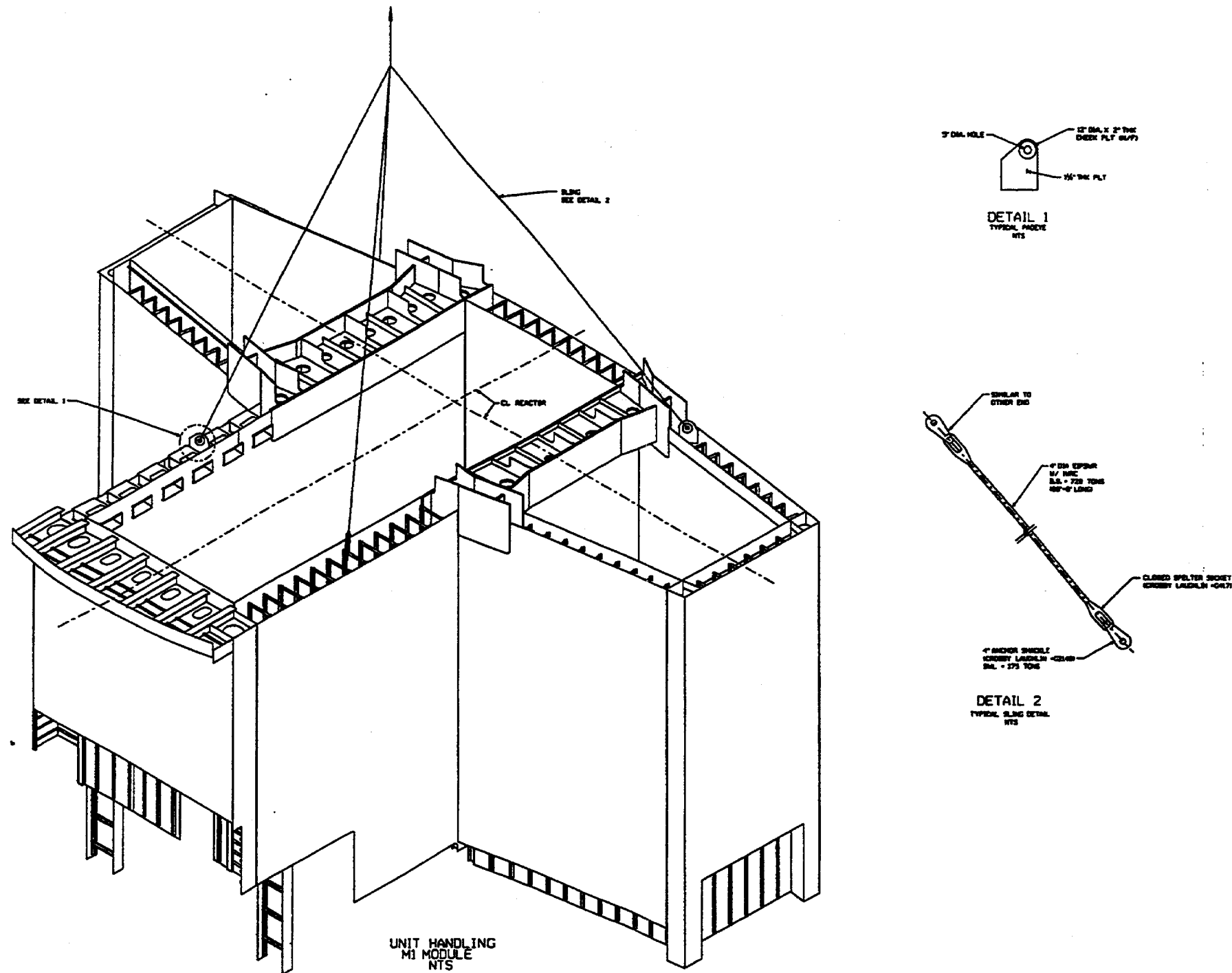


Figure 3.8.3-14

[Typical M-1 Module]*

*NRC Staff approval is required prior to implementing a change in this material; see DCD Introduction Section 3.5.

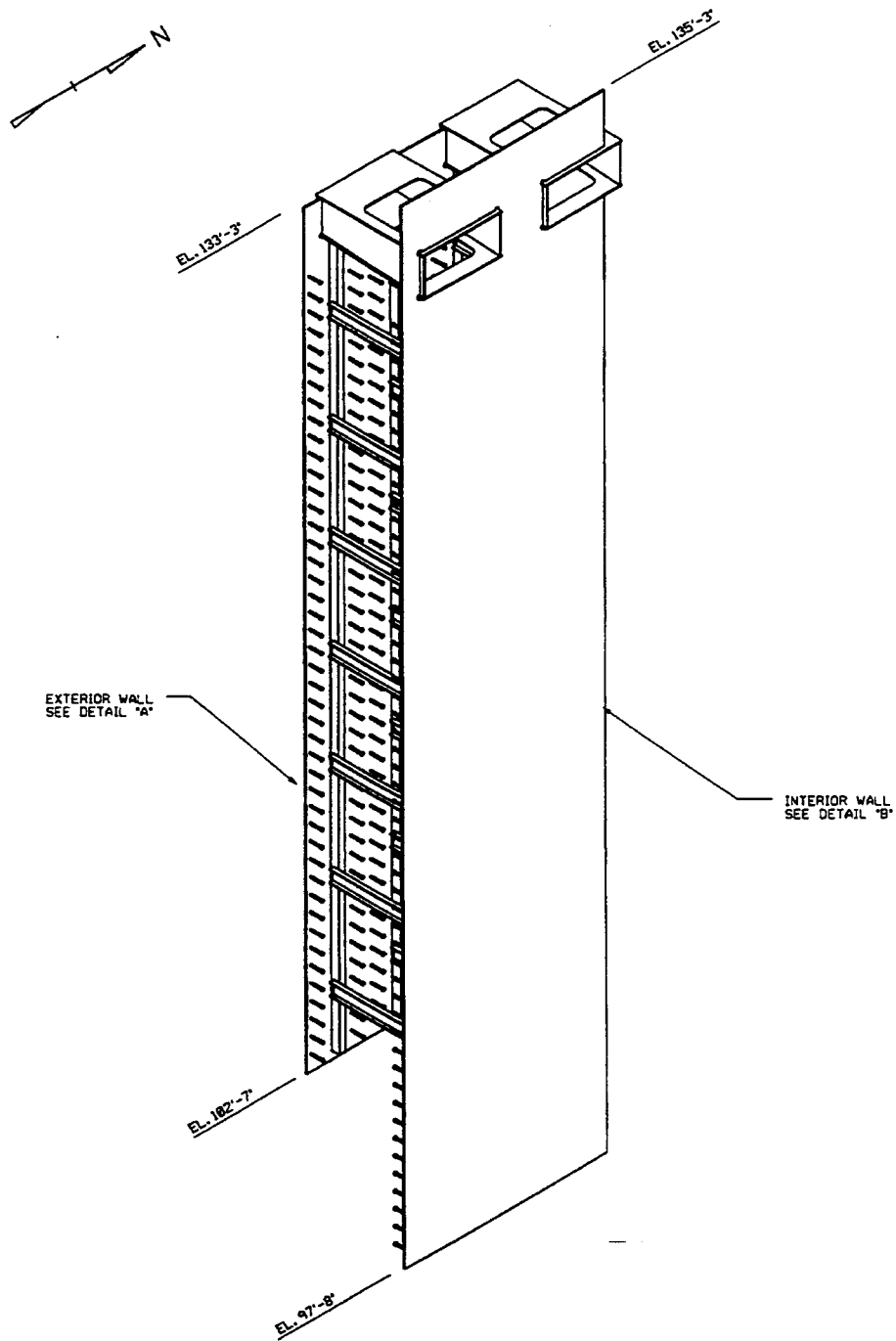


Figure 3.8.3-15 (Sheet 1 of 2)

[Typical M-1 Module]*

*NRC Staff approval is required prior to implementing a change in this material; see DCD Introduction Section 3.5.

[This page intentionally blank]

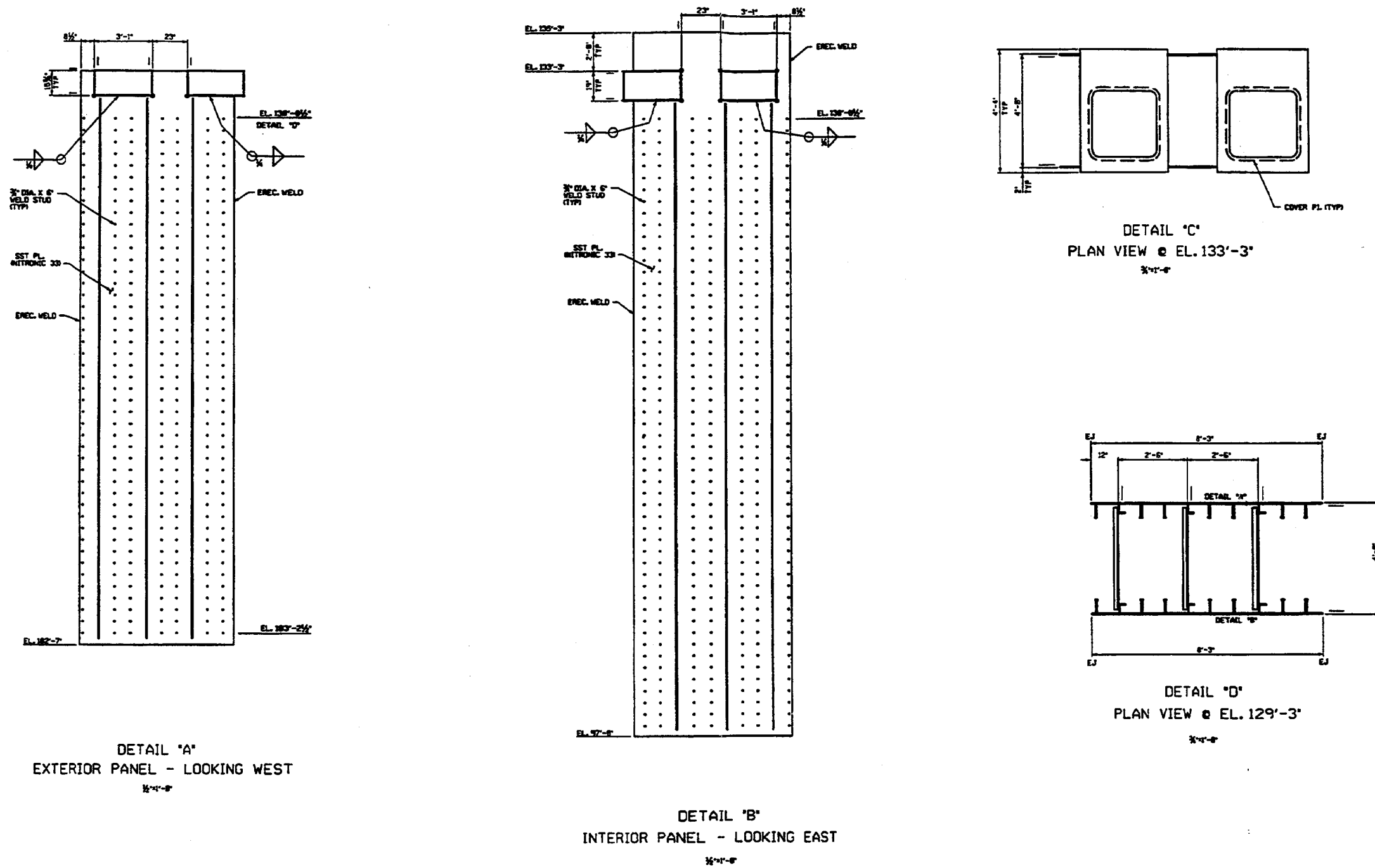


Figure 3.8.3-15 (Sheet 2 of 2)

[Typical M-1 Module]*

*NRC Staff approval is required prior to implementing a change in this material; see DCD Introduction Section 3.5.

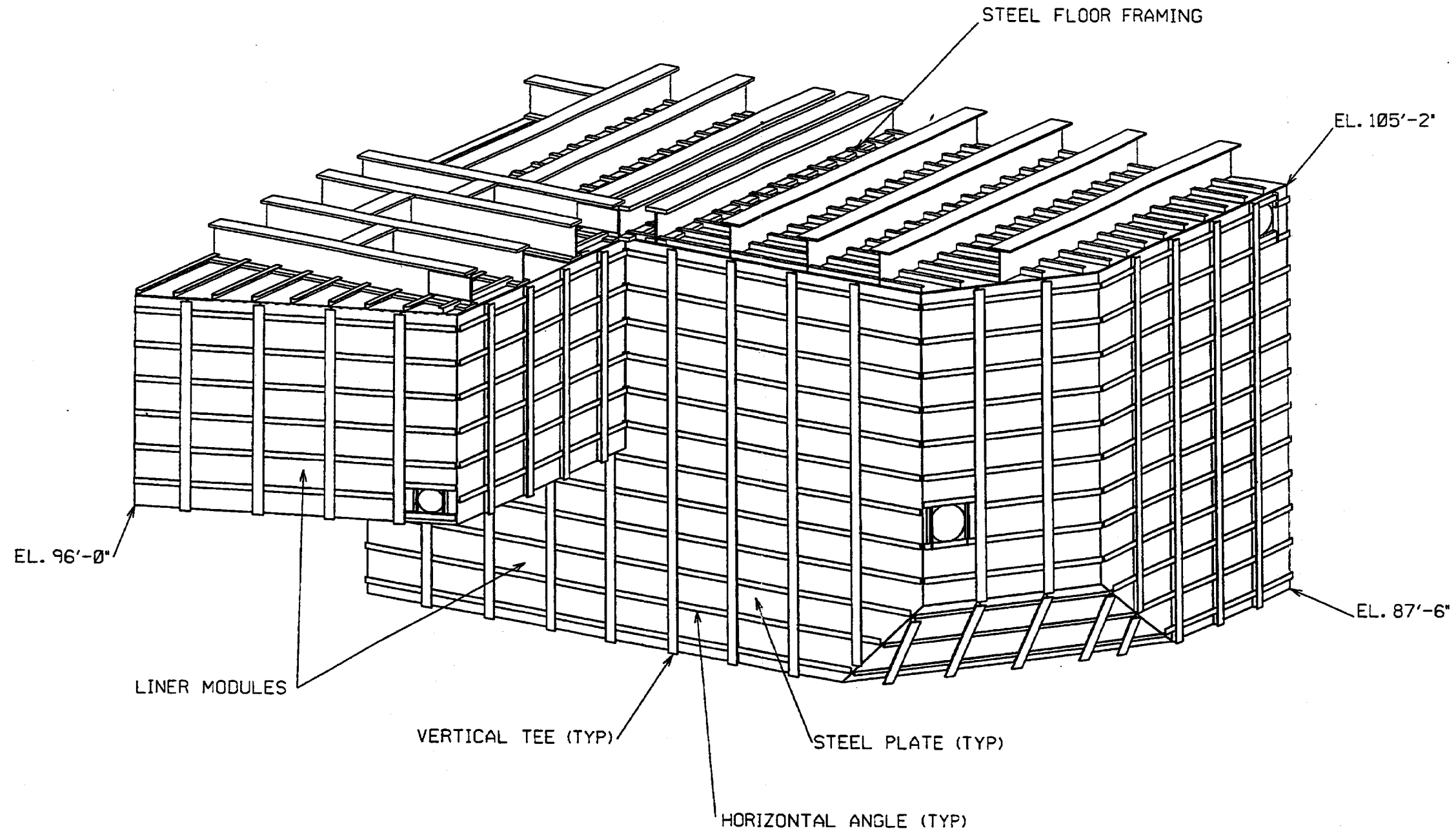


Figure 3.8.3-16

Typical Liner Modules

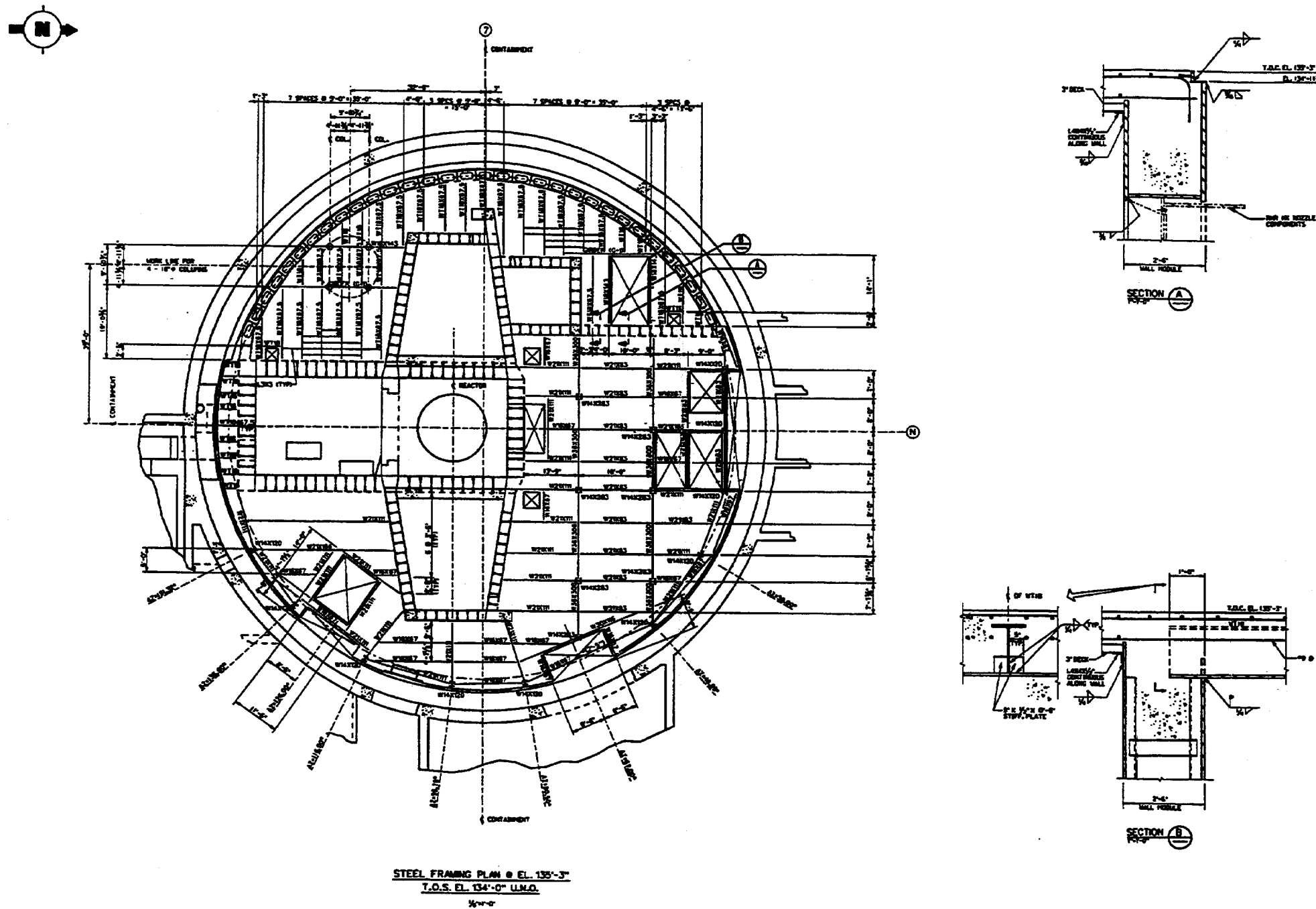


Figure 3.8.3-17 (Sheet 1 of 2)

[Structural Modules - Typical Design Details]*

*NRC Staff approval is required prior to implementing a change in this material; see DCD Introduction Section 3.5.

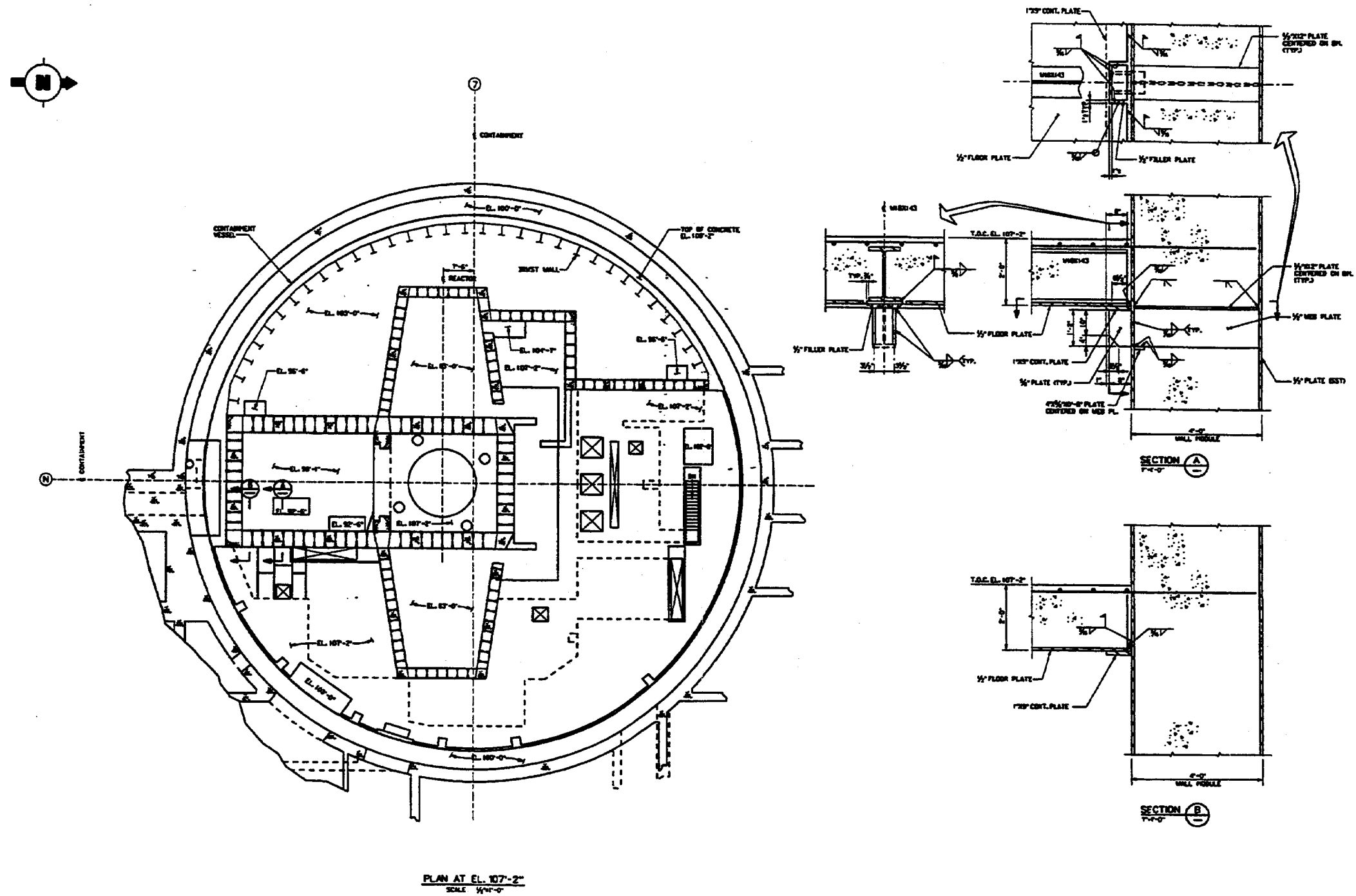


Figure 3.8.3-17 (Sheet 2 of 2)

[Structural Modules - Typical Design Details]*

*NRC Staff approval is required prior to implementing a change in this material; see DCD Introduction Section 3.5.

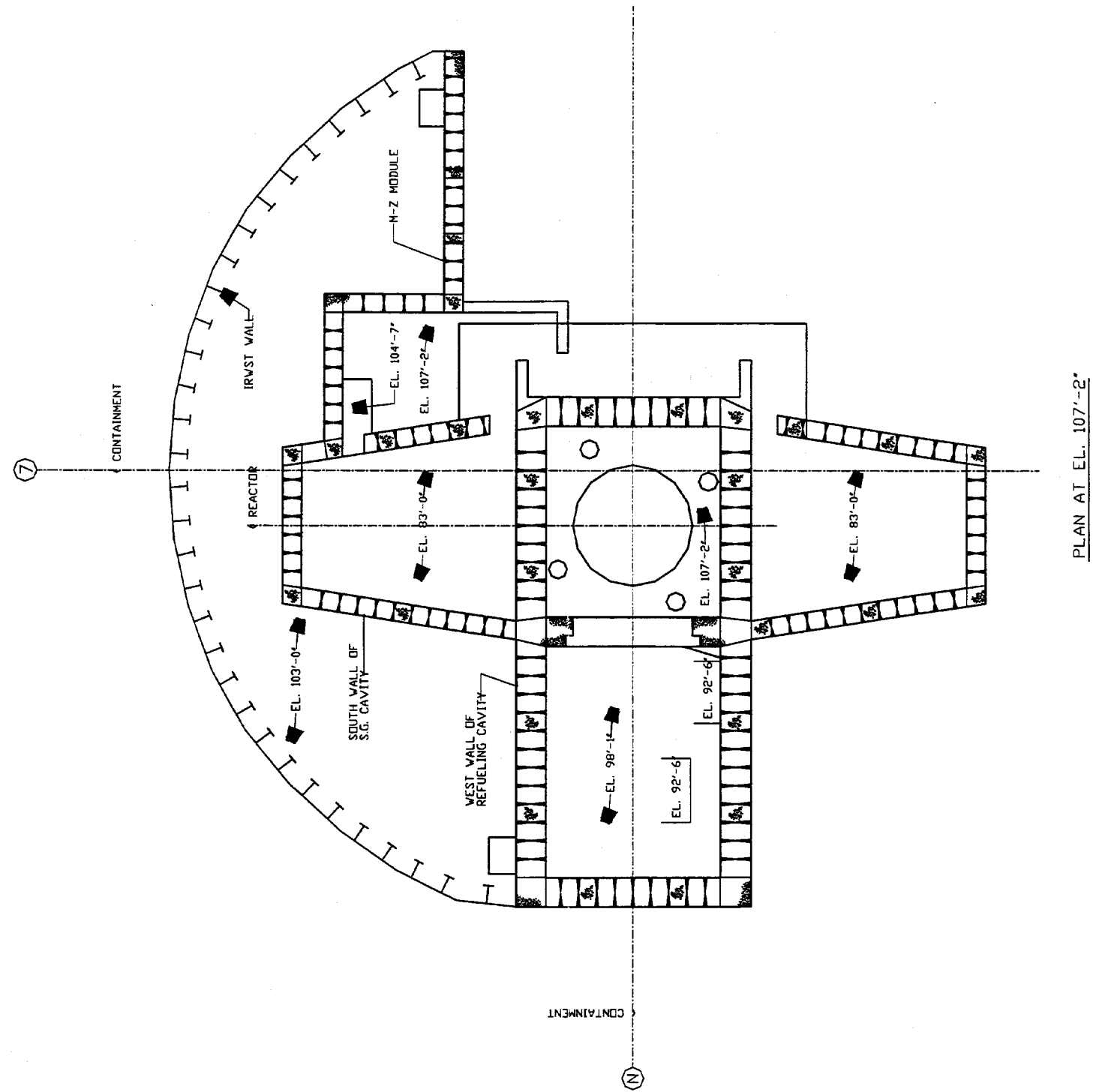


Figure 3.8.3-18

[Location of Structural Wall Modules]*

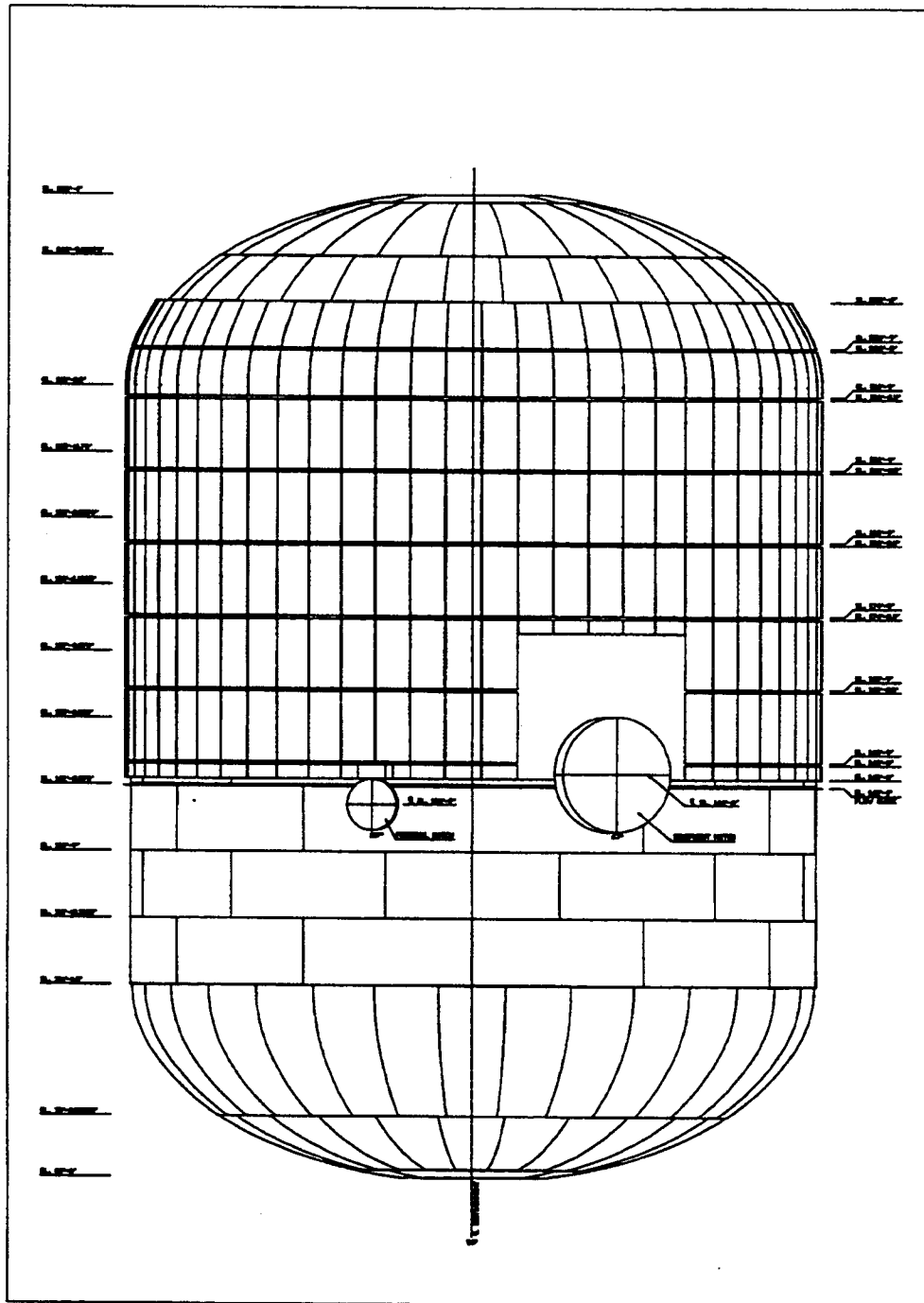


Figure 3.8.4-1 (Sheet 1 of 4)

**Containment Air Baffle
General Arrangement**

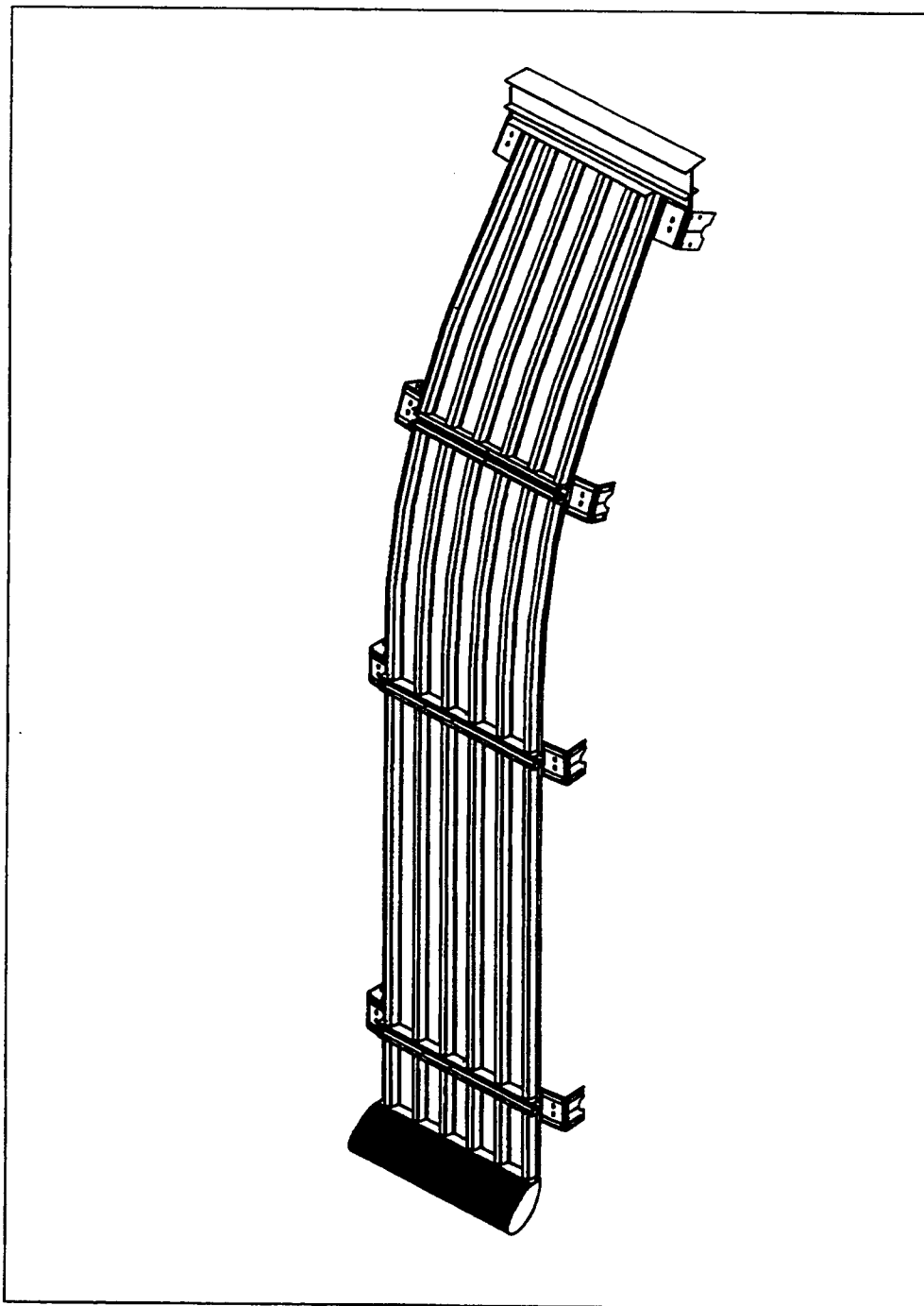


Figure 3.8.4-1 (Sheet 2 of 4)

**Containment Air Baffle
Panel Types**

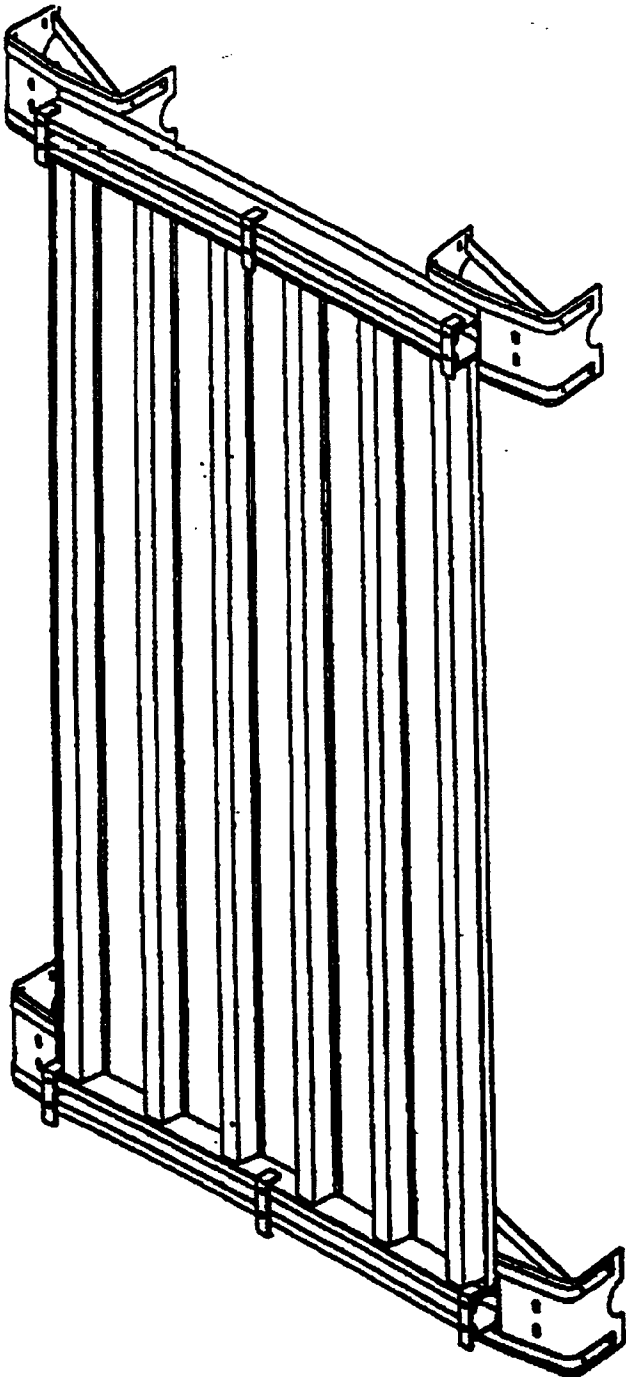


Figure 3.8.4-1 (Sheet 3 of 4)

**Containment Air Baffle
Typical Panel on Cylinder**

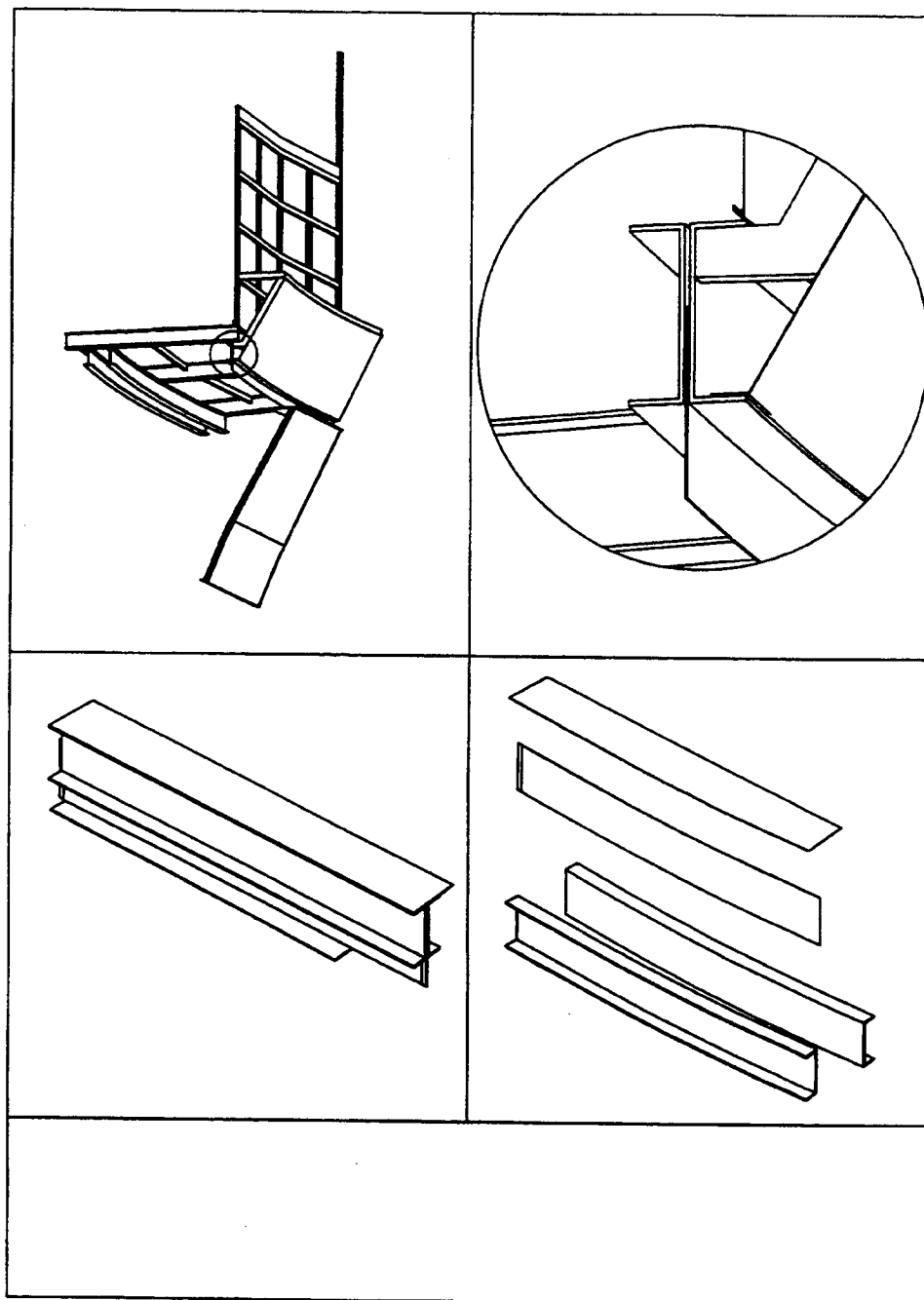


Figure 3.8.4-1 (Sheet 4 of 4)

**Containment Air Baffle
Sliding Plate**

Deleted

Figure 3.8.4-2

**Auxiliary Building Reinforcement
Concrete Wall 11 Elevations**

Deleted

Figure 3.8.4-3

**Auxiliary Building Concrete Reinforcement
Floor at Elevation 82'-6" Plan Areas 1 and 2**

Deleted

Figure 3.8.4-4

**Auxiliary Building Steel Framing
Plan at El. 82'-6'**

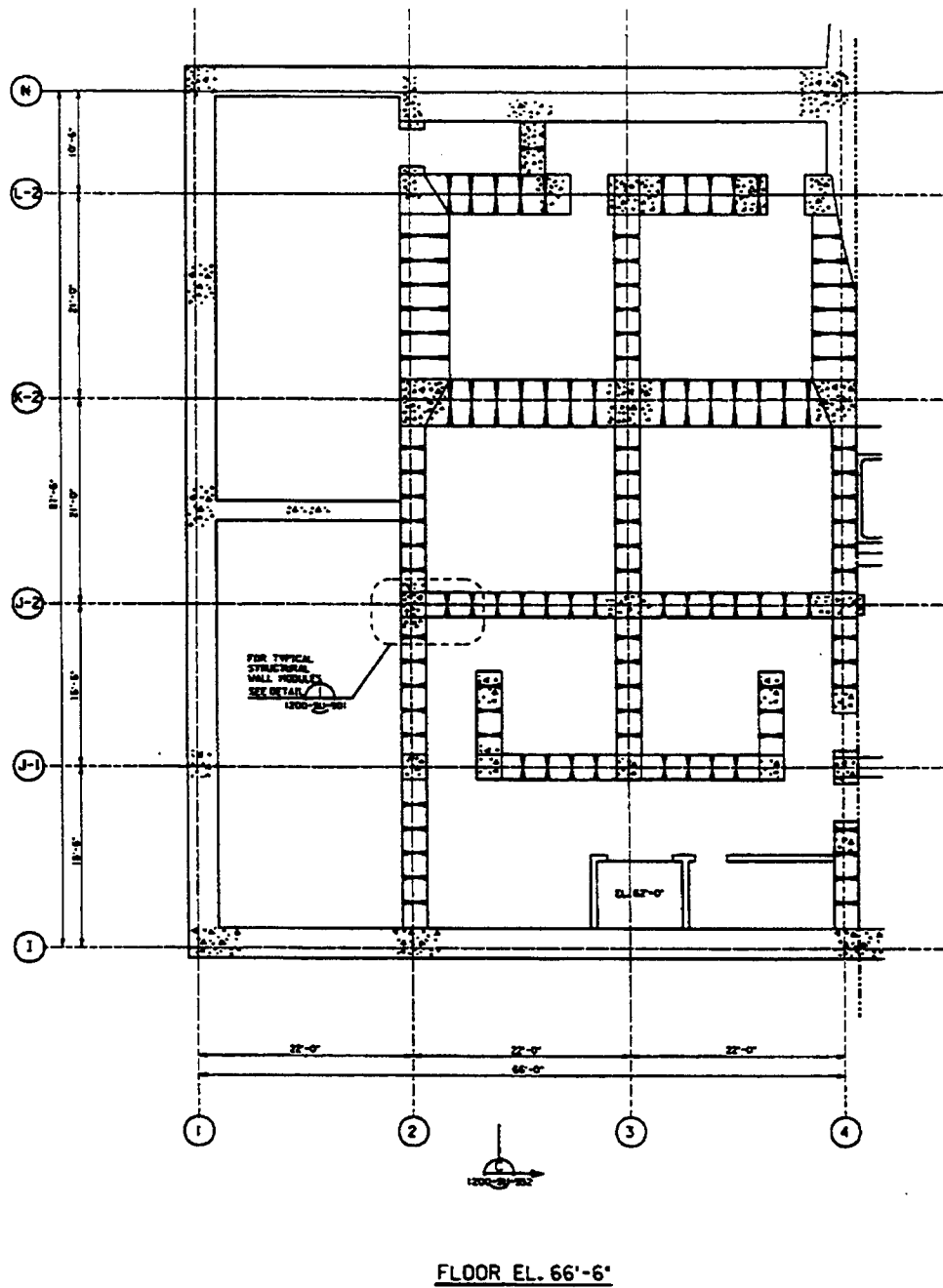


Figure 3.8.4-5 (Sheet 1 of 5)

[Structural Modules in Auxiliary Building]*

*NRC Staff approval is required prior to implementing a change in this material; see DCD Introduction Section 3.5.

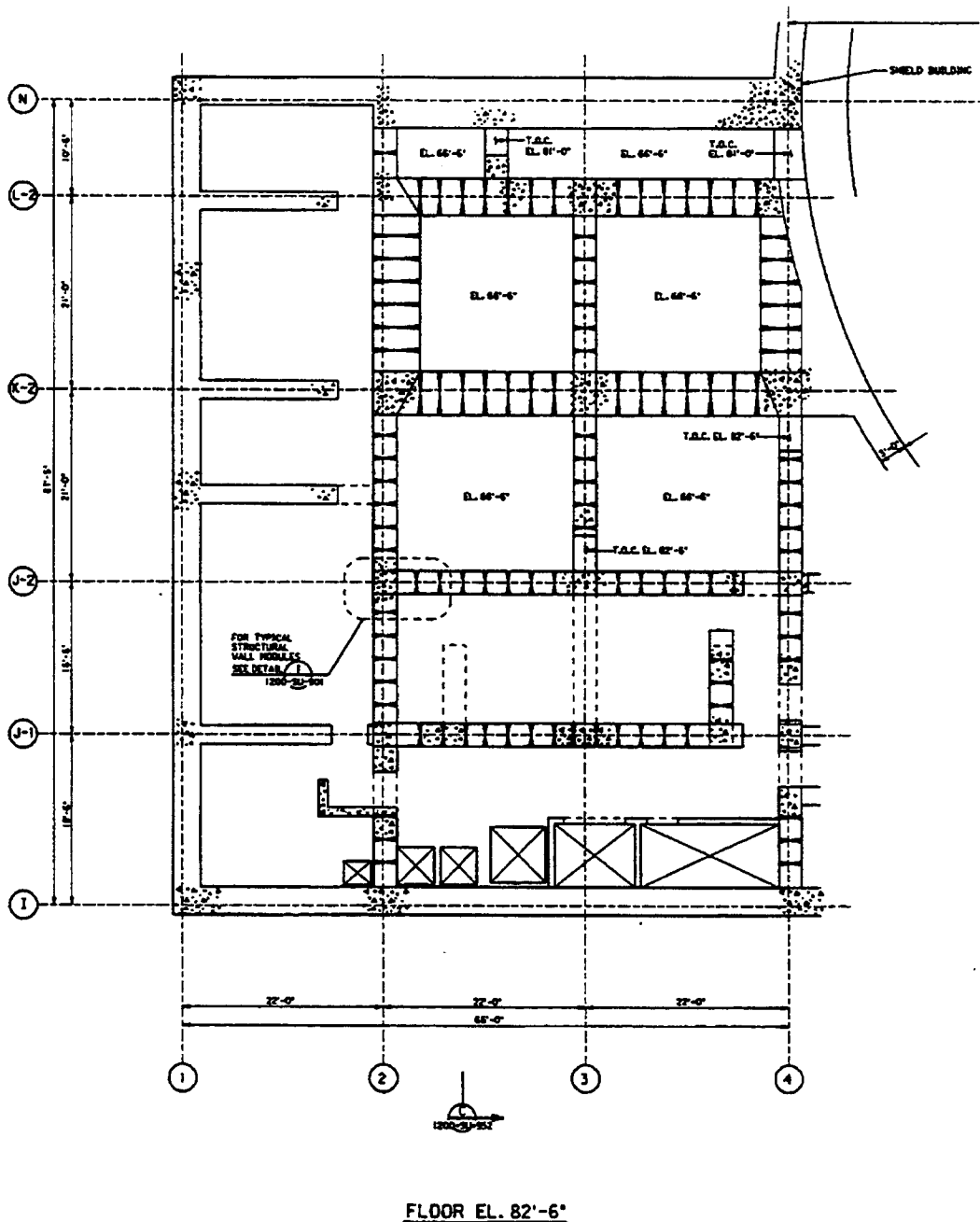


Figure 3.8.4-5 (Sheet 2 of 5)

[Structural Modules in Auxiliary Building]*

*NRC Staff approval is required prior to implementing a change in this material; see DCD Introduction Section 3.5.

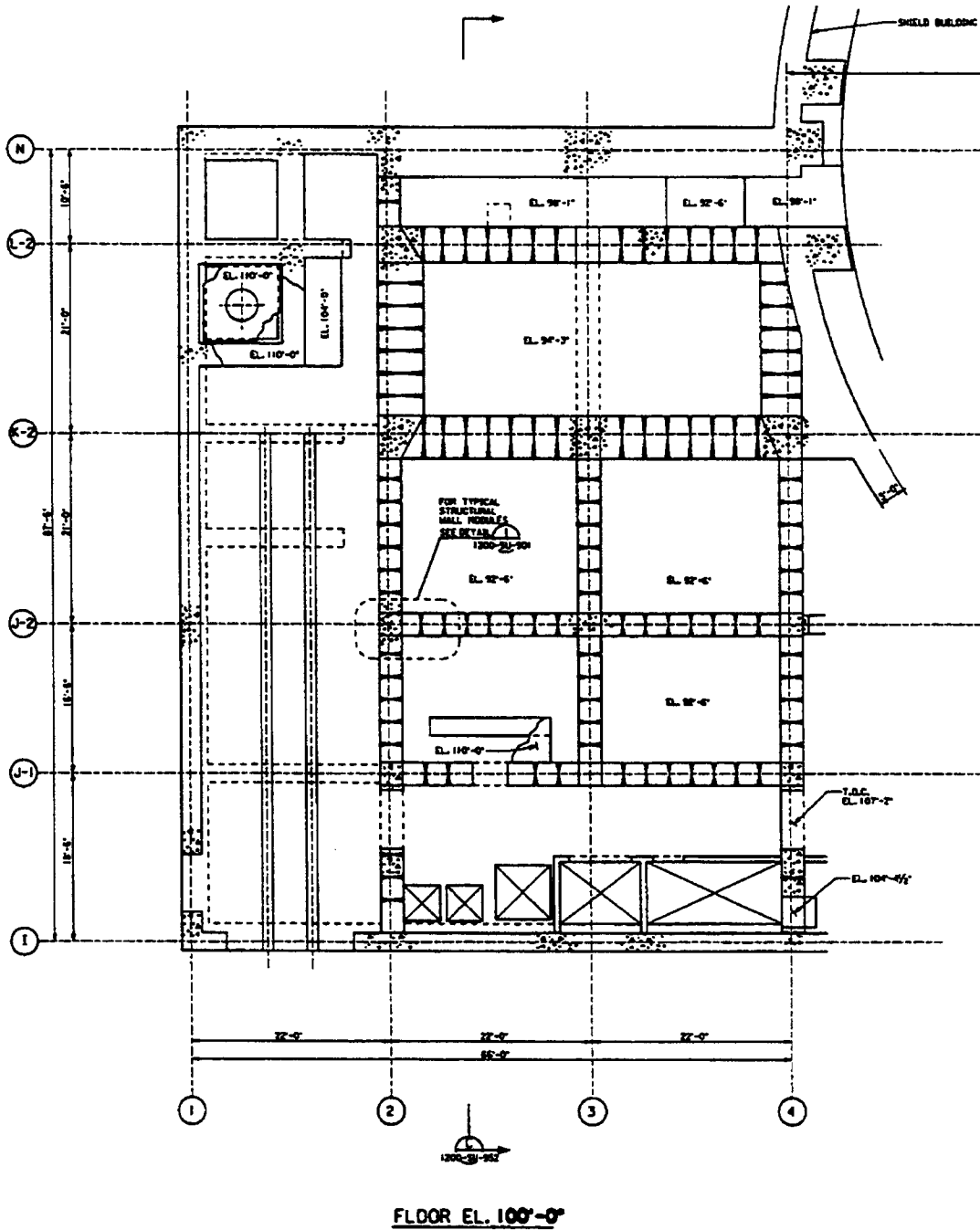


Figure 3.8.4-5 (Sheet 3 of 5)

[Structural Modules in Auxiliary Building]*

*NRC Staff approval is required prior to implementing a change in this material; see DCD Introduction Section 3.5.

Deleted

Figure 3.8.4-6 (Sheet 1 of 3)

Auxiliary Building Finned Floor

Deleted

Figure 3.8.4-6 (Sheet 2 of 3)

Auxiliary Building Finned Floor

Deleted

Figure 3.8.4-6 (Sheet 3 of 3)

Auxiliary Building Finned Floor

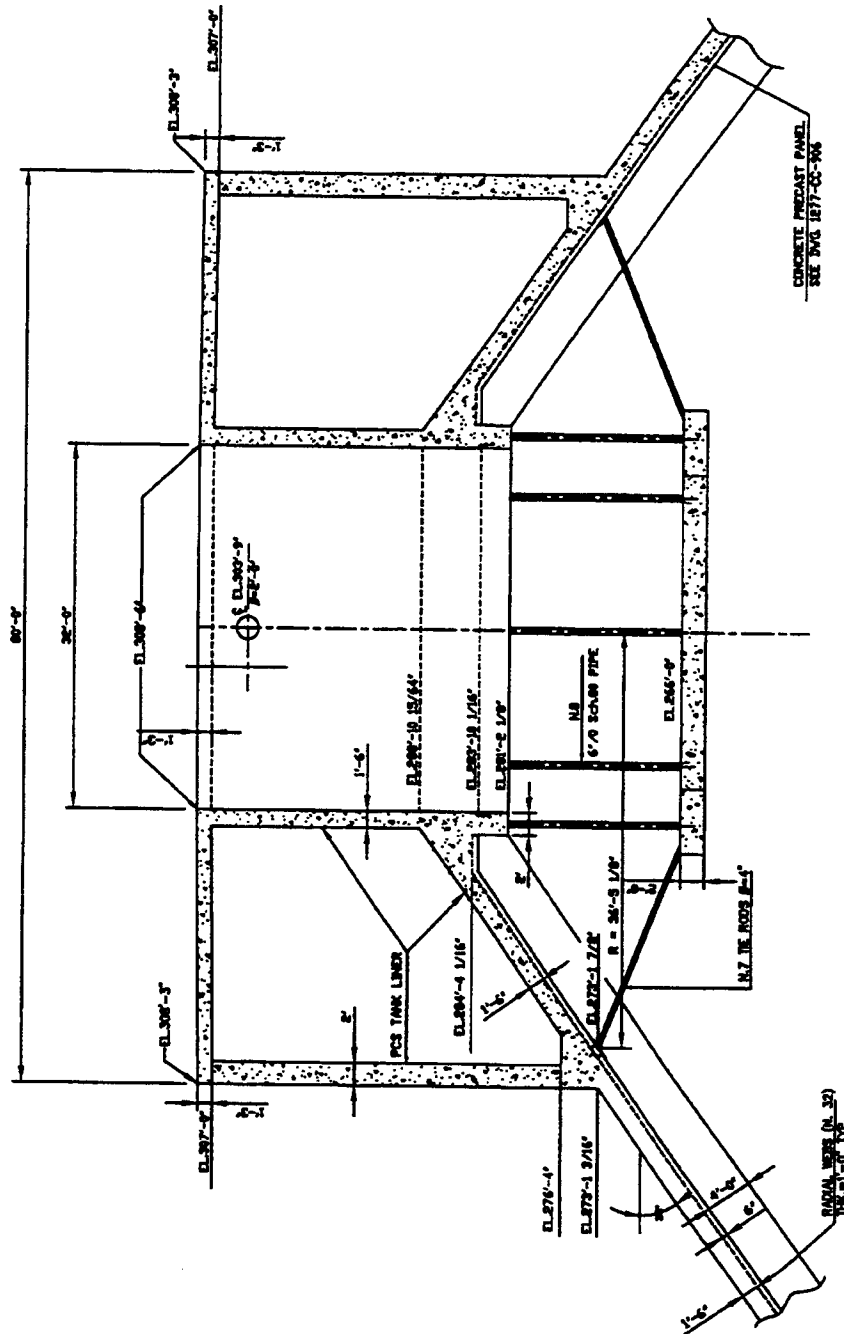


Figure 3.8.4-7

[Passive Containment Cooling Tank]*

*NRC Staff approval is required prior to implementing a change in this material; see DCD Introduction Section 3.5.

Deleted

Figure 3.8.4-8 (Sheet 1 of 2)

Fire Water Storage Tank Sections

Deleted

Figure 3.8.4-8 (Sheet 2 of 2)

Fire Water Storage Tank Sections

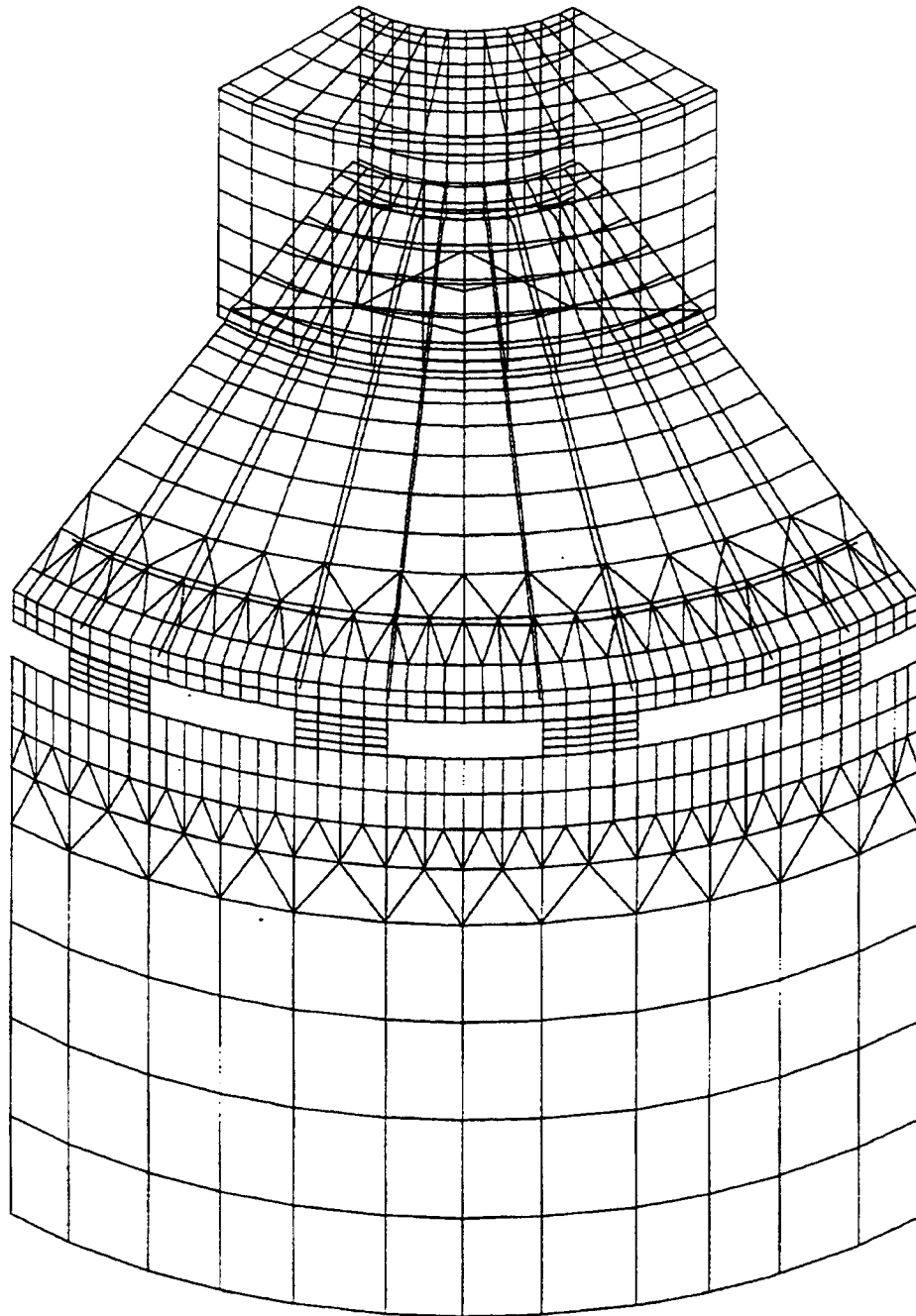


Figure 3.8.4-9

Finite Element Model of Shield Building Roof

[This page intentionally blank]

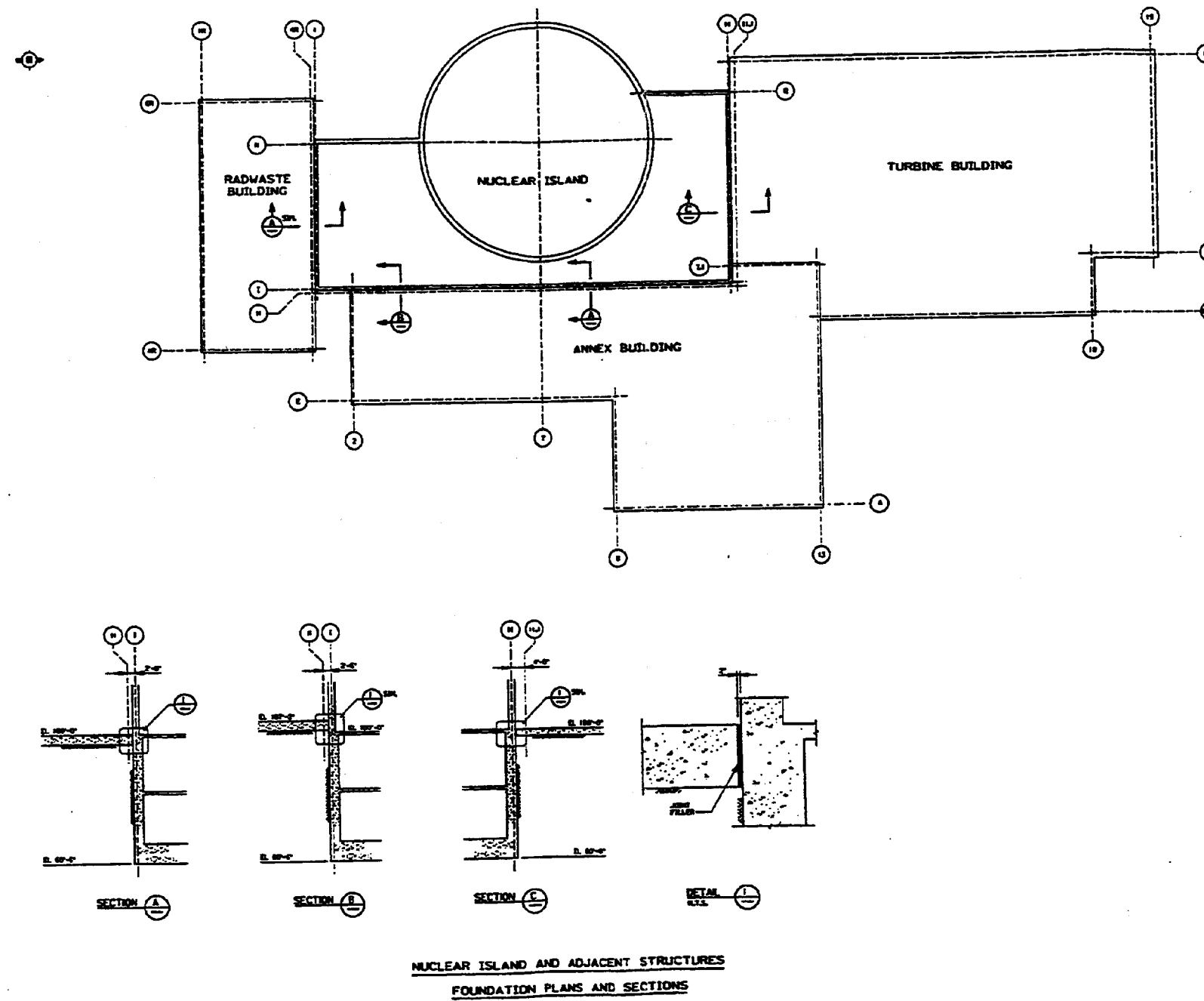
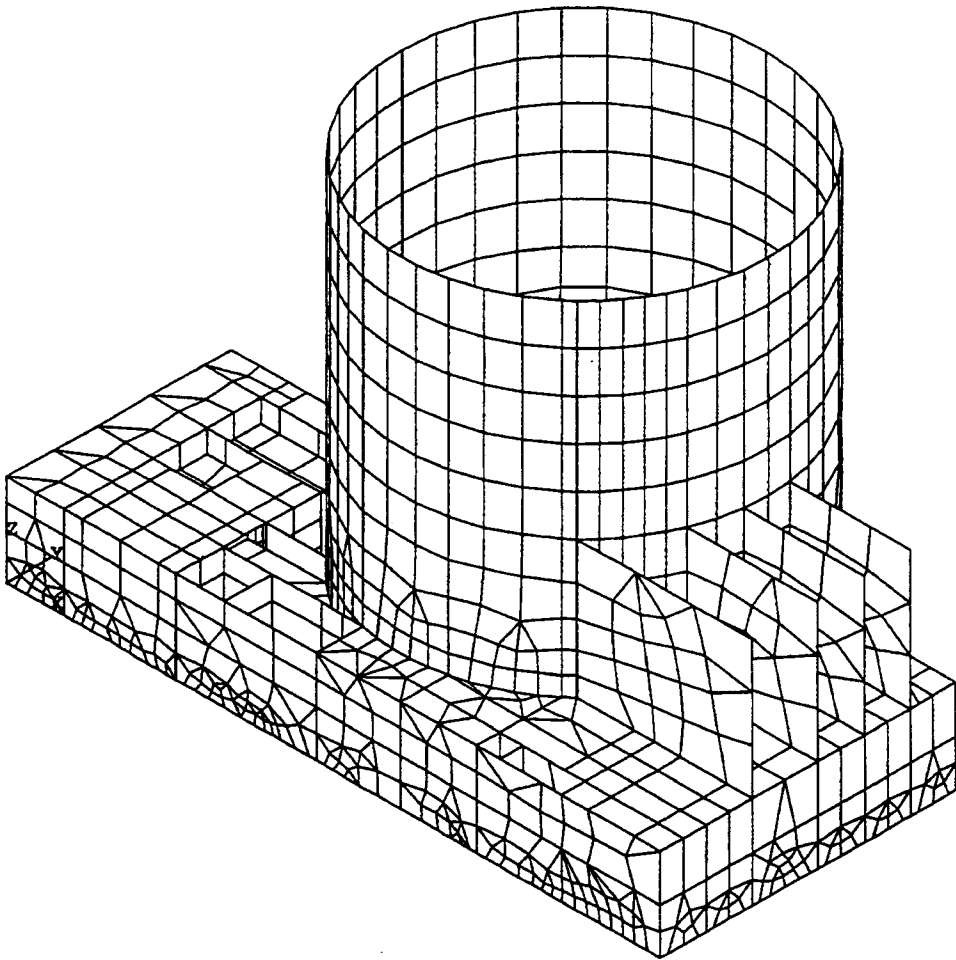


Figure 3.8.5-1
Foundation Plan



Nuclear Island - General View

Figure 3.8.5-2 (Sheet 1 of 2)

Nuclear Island Finite Element Model - General View

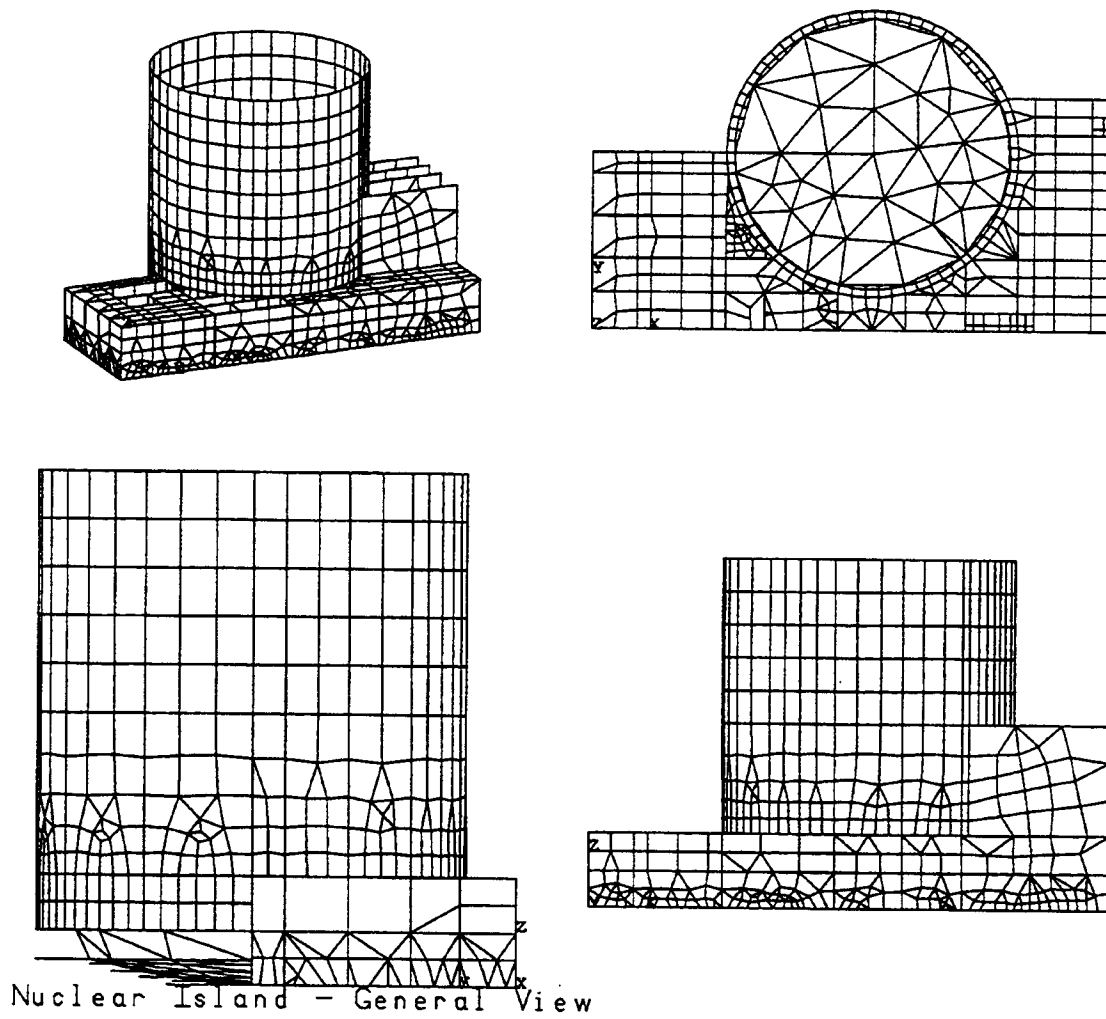


Figure 3.8.5-2 (Sheet 2 of 2)

Nuclear Island Finite Element Model - Plan and Elevation Views

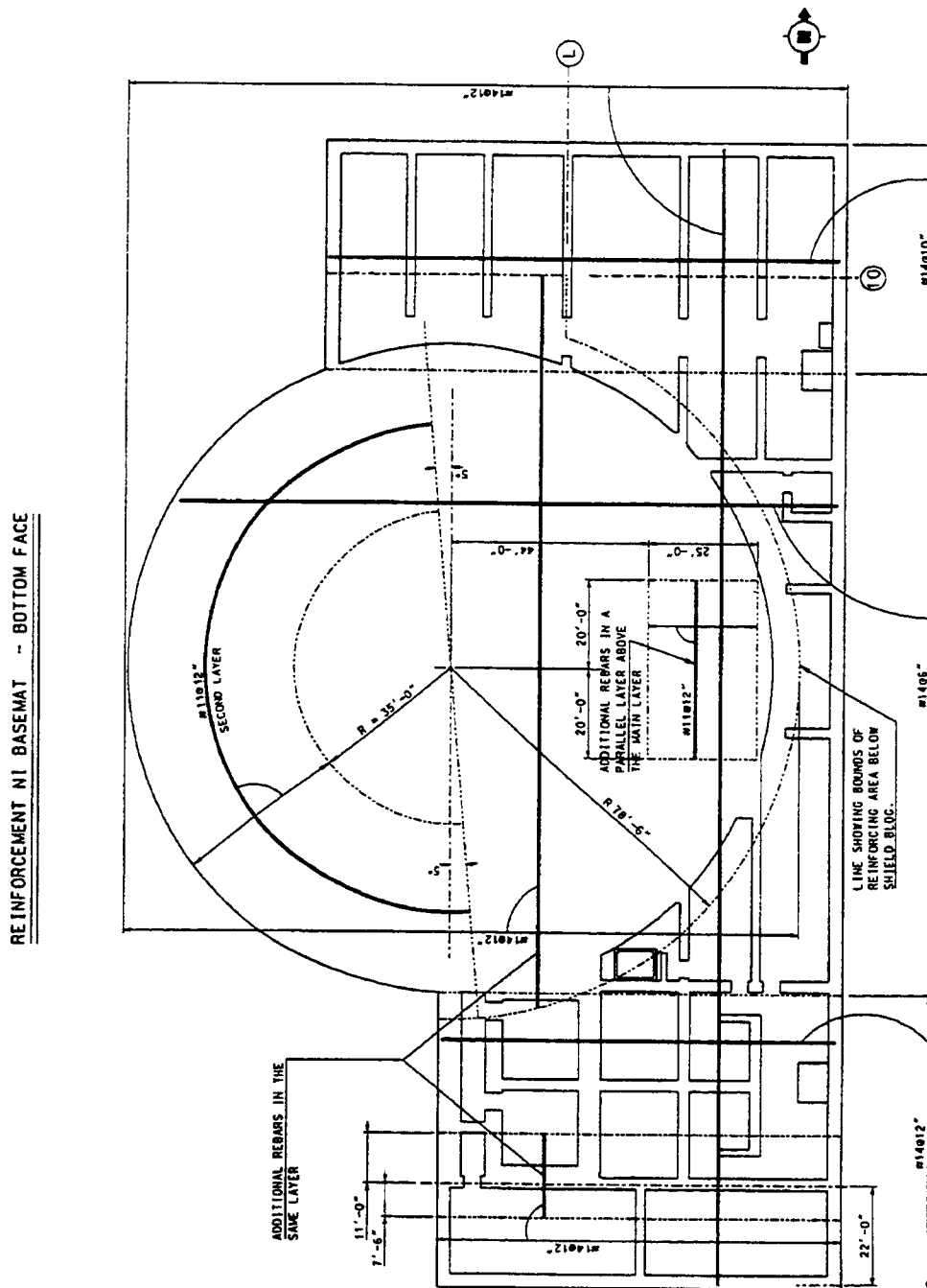


Figure 3.8.5-3 (Sheet 1 of 5)

[Basemat Reinforcement - Bottom Face]*

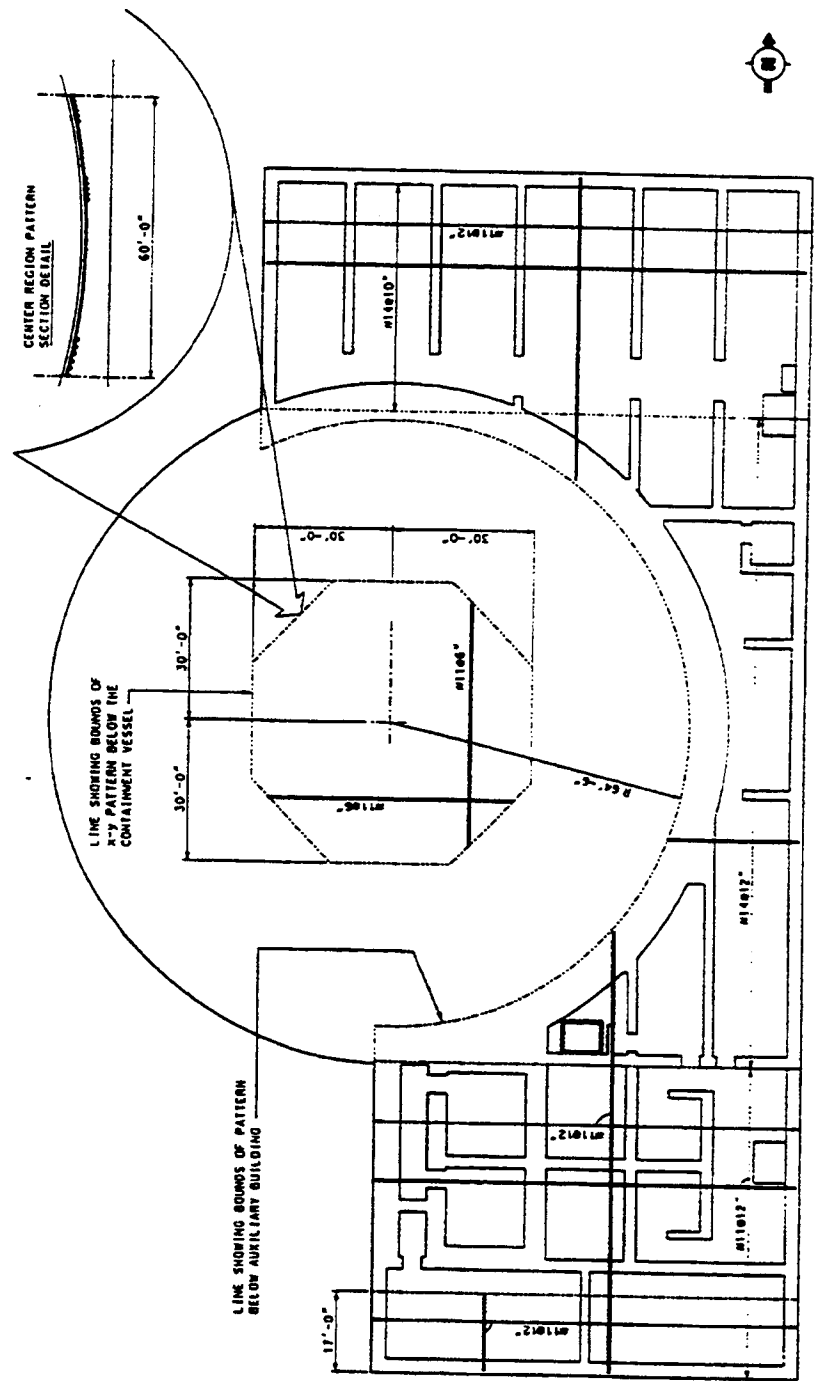


Figure 3.8.5-3 (Sheet 2 of 5)

[Basemat Reinforcement - Top Face]*

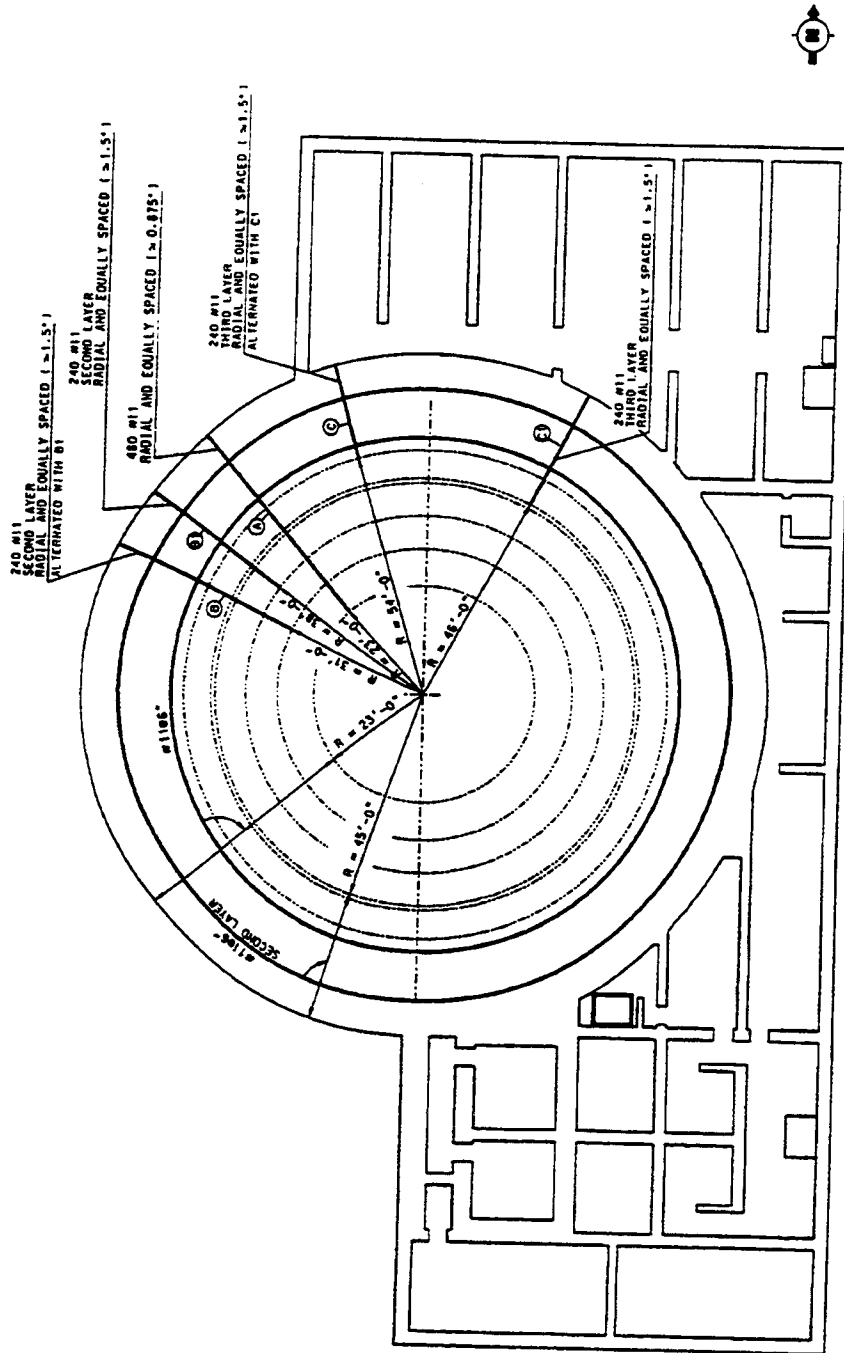


Figure 3.8.5-3 (Sheet 3 of 5)

**Basemat Reinforcement - Top Face Below
Containment Vessel**

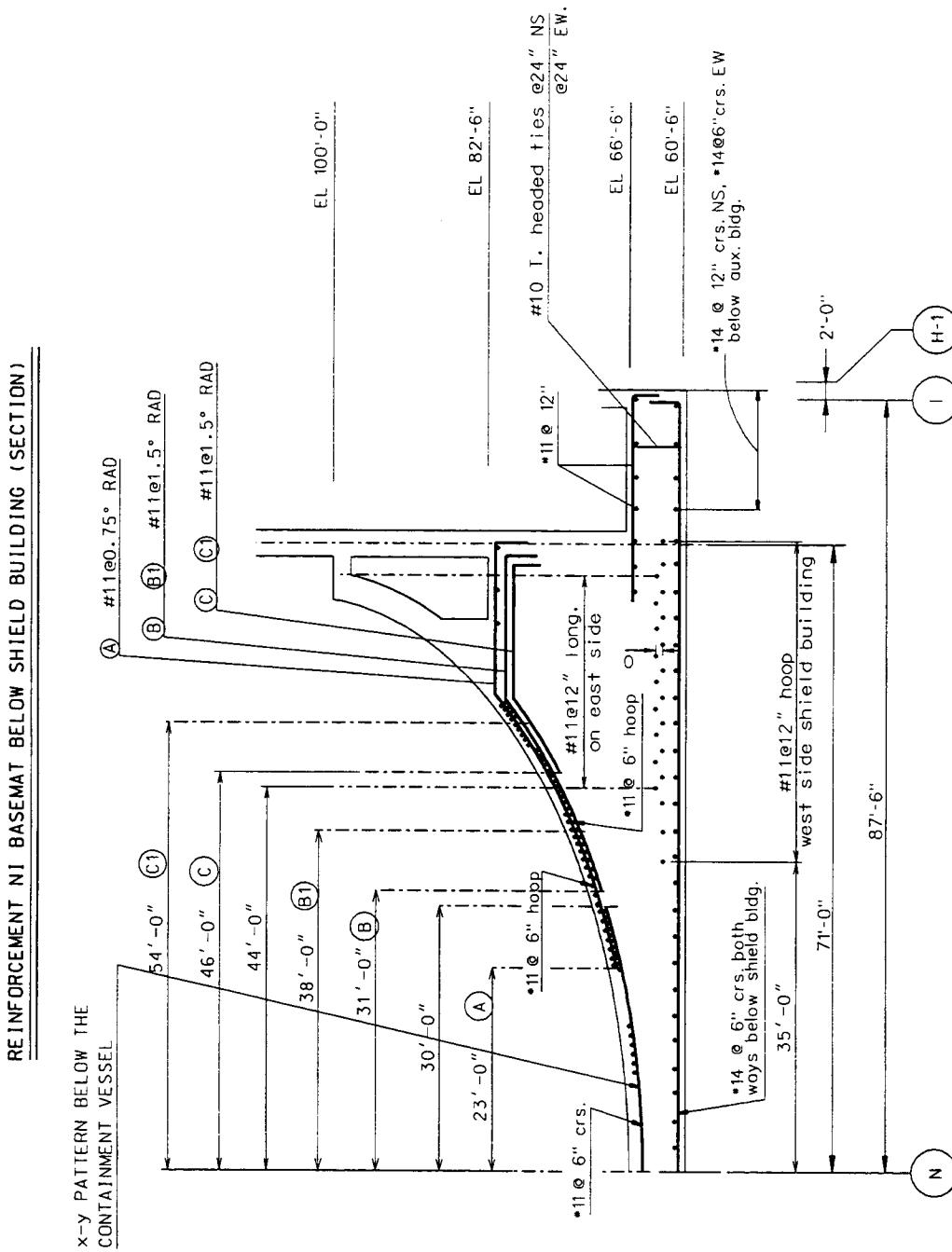


Figure 3.8.5-3 (Sheet 4 of 5)

Basemat Reinforcement - Cross Section

N.I. BASEMAT - SHEAR REINFORCEMENT

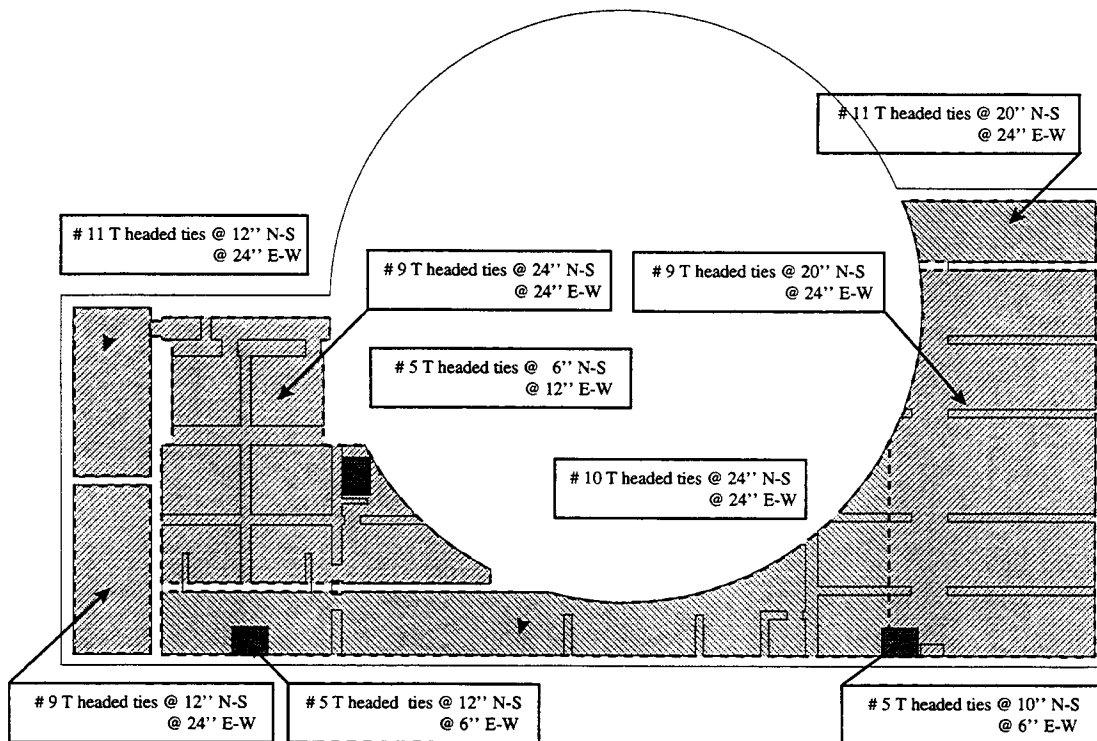


Figure 3.8.5-3 (Sheet 5 of 5)

[Basemat Shear Reinforcement]*

*NRC Staff approval is required prior to implementing a change in this material; see DCD Introduction Section 3.5.