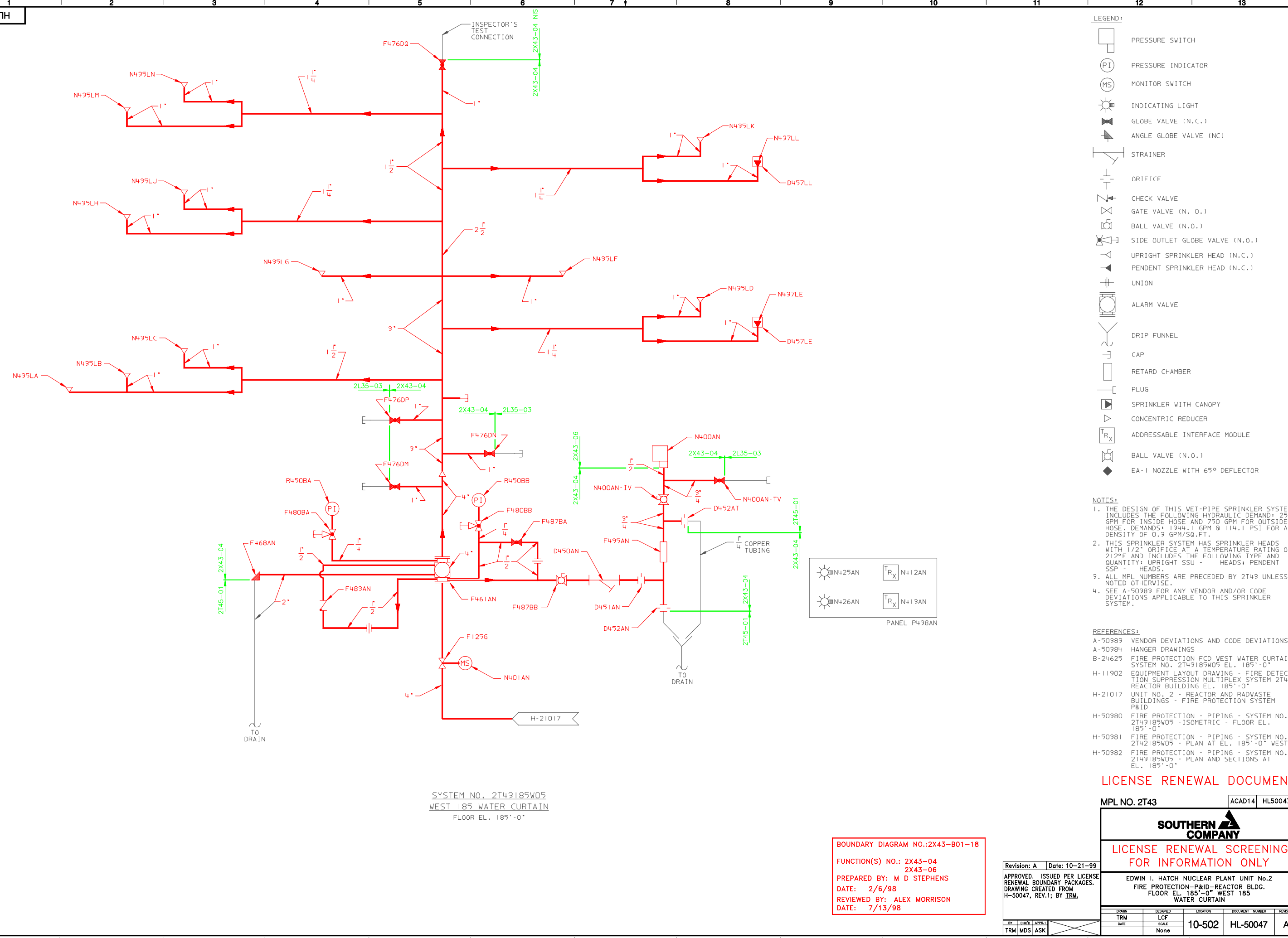


A  
B  
C  
D  
E  
F  
G  
H  
J



- LEGEND:**
- PRESSURE SWITCH
  - PRESSURE INDICATOR
  - MONITOR SWITCH
  - INDICATING LIGHT
  - GLOBE VALVE (N.C.)
  - ANGLE GLOBE VALVE (NC)
  - STRAINER
  - ORIFICE
  - CHECK VALVE
  - GATE VALVE (N.O.)
  - BALL VALVE (N.O.)
  - SIDE OUTLET GLOBE VALVE (N.O.)
  - UPRIGHT SPRINKLER HEAD (N.C.)
  - PENDENT SPRINKLER HEAD (N.C.)
  - UNION
  - ALARM VALVE
  - DRIP FUNNEL
  - CAP
  - RETARD CHAMBER
  - PLUG
  - SPRINKLER WITH CANOPY
  - CONCENTRIC REDUCER
  - ADDRESSABLE INTERFACE MODULE
  - BALL VALVE (N.O.)
  - EA-1 NOZZLE WITH 65° DEFLECTOR

- NOTES:**
1. THE DESIGN OF THIS WET-PIPE SPRINKLER SYSTEM INCLUDES THE FOLLOWING HYDRAULIC DEMAND: 250 GPM FOR INSIDE HOSE AND 750 GPM FOR OUTSIDE HOSE, DEMANDS: 1344.1 GPM @ 114.1 PSI FOR A DENSITY OF 0.3 GPM/50.FT.
  2. THIS SPRINKLER SYSTEM HAS SPRINKLER HEADS WITH 1/2" ORIFICE AT A TEMPERATURE RATING OF 212°F AND INCLUDES THE FOLLOWING TYPE AND QUANTITY: UPRIGHT SSU - HEADS; PENDENT SSP - HEADS.
  3. ALL MPL NUMBERS ARE PRECEDED BY 2T43 UNLESS NOTED OTHERWISE.
  4. SEE A-50383 FOR ANY VENDOR AND/OR CODE DEVIATIONS APPLICABLE TO THIS SPRINKLER SYSTEM.

- REFERENCES:**
- A-50383 VENDOR DEVIATIONS AND CODE DEVIATIONS
  - A-50384 HANGER DRAWINGS
  - B-24625 FIRE PROTECTION FCD WEST WATER CURTAIN SYSTEM NO. 2T43185W05 EL. 185'-0"
  - H-11902 EQUIPMENT LAYOUT DRAWING - FIRE DETECTION SUPPRESSION MULTIPLEX SYSTEM 2T43 REACTOR BUILDING EL. 185'-0"
  - H-21017 UNIT NO. 2 - REACTOR AND RADWASTE BUILDINGS - FIRE PROTECTION SYSTEM P&ID
  - H-50380 FIRE PROTECTION - PIPING - SYSTEM NO. 2T43185W05 - ISOMETRIC - FLOOR EL. 185'-0"
  - H-50381 FIRE PROTECTION - PIPING - SYSTEM NO. 2T42185W05 - PLAN AT EL. 185'-0" WEST
  - H-50382 FIRE PROTECTION - PIPING - SYSTEM NO. 2T43185W05 - PLAN AND SECTIONS AT EL. 185'-0"

**PANEL P438AN**

N425AN	N412AN
N426AN	N413AN

SYSTEM NO. 2T43185W05  
WEST 185 WATER CURTAIN  
FLOOR EL. 185'-0"

BOUNDARY DIAGRAM NO.: 2X43-B01-18  
FUNCTION(S) NO.: 2X43-04  
2X43-06  
PREPARED BY: M D STEPHENS  
DATE: 2/6/98  
REVIEWED BY: ALEX MORRISON  
DATE: 7/13/98

Revision: A Date: 10-21-99  
APPROVED, ISSUED PER LICENSE RENEWAL BOUNDARY PACKAGES.  
DRAWING CREATED FROM H-50047, REV.1; BY TRM.

BY	CHK'D	APPR'D
TRM	MDS	ASK

LICENSE RENEWAL DOCUMENT  
MPL NO. 2T43 ACAD14 HL50047

**SOUTHERN COMPANY**

LICENSE RENEWAL SCREENING FOR INFORMATION ONLY

EDWIN I. HATCH NUCLEAR PLANT UNIT No.2  
FIRE PROTECTION-P&ID-REACTOR BLDG.  
FLOOR EL. 185'-0" WEST 185 WATER CURTAIN

DRAWN	DESIGNED	LOCATION	DOCUMENT NUMBER	REVISION
TRM	LCF	10-502	HL-50047	A