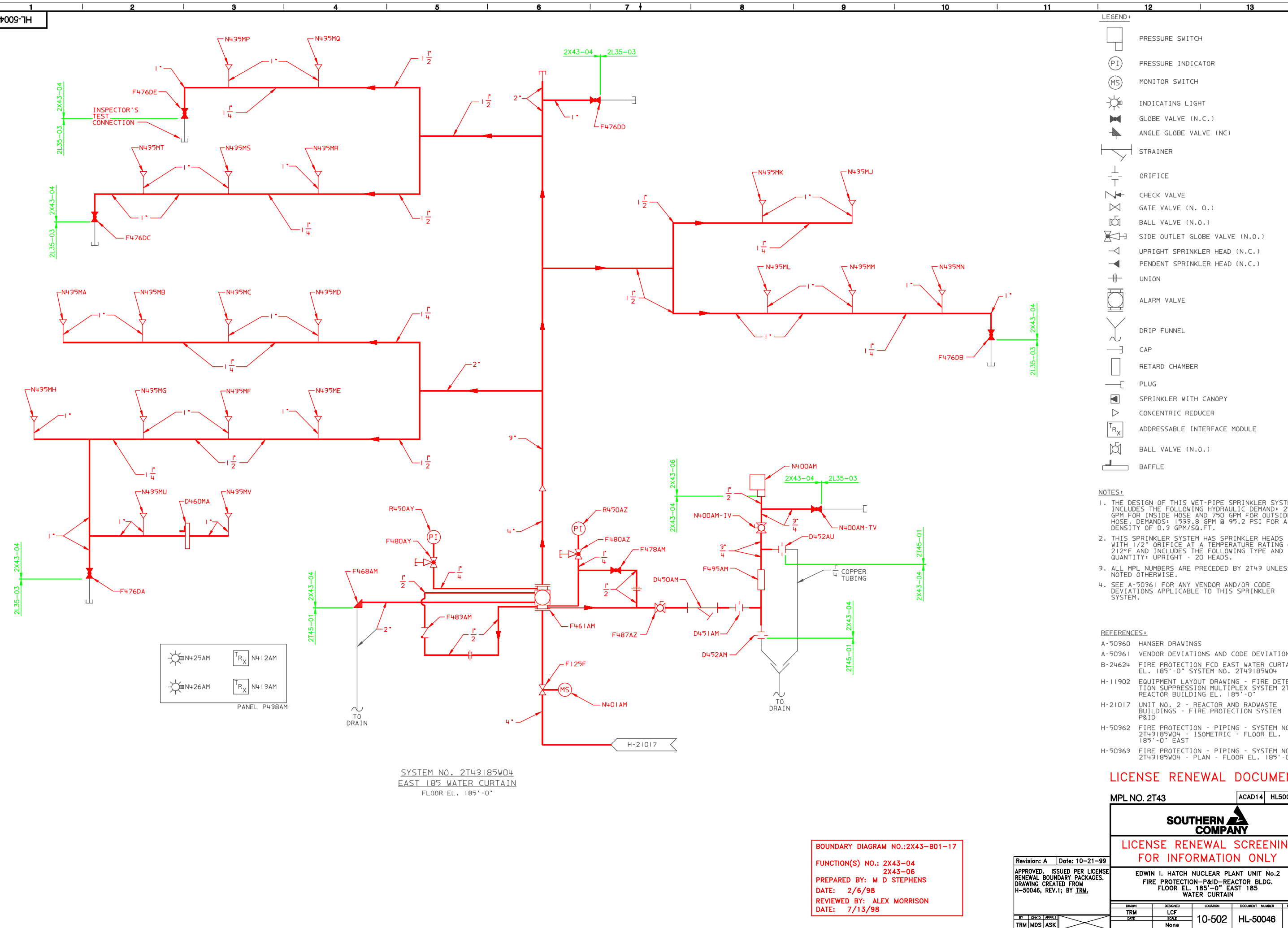


A
B
C
D
E
F
G
H
J



- LEGEND:**
- PRESSURE SWITCH
 - PRESSURE INDICATOR
 - MONITOR SWITCH
 - INDICATING LIGHT
 - GLOBE VALVE (N.C.)
 - ANGLE GLOBE VALVE (NC)
 - STRAINER
 - ORIFICE
 - CHECK VALVE
 - GATE VALVE (N.O.)
 - BALL VALVE (N.O.)
 - SIDE OUTLET GLOBE VALVE (N.O.)
 - UPRIGHT SPRINKLER HEAD (N.C.)
 - PENDENT SPRINKLER HEAD (N.C.)
 - UNION
 - ALARM VALVE
 - DRAIN FUNNEL
 - CAP
 - RETARD CHAMBER
 - PLUG
 - SPRINKLER WITH CANOPY
 - CONCENTRIC REDUCER
 - ADDRESSABLE INTERFACE MODULE
 - BALL VALVE (N.O.)
 - BAFFLE

- NOTES:**
1. THE DESIGN OF THIS WET-PIPE SPRINKLER SYSTEM INCLUDES THE FOLLOWING HYDRAULIC DEMAND: 250 GPM FOR INSIDE HOSE AND 750 GPM FOR OUTSIDE HOSE. DEMANDS: 1533.8 GPM @ 95.2 PSI FOR A DENSITY OF 0.3 GPM/SQ.FT.
 2. THIS SPRINKLER SYSTEM HAS SPRINKLER HEADS WITH 1/2" ORIFICE AT A TEMPERATURE RATING OF 212°F AND INCLUDES THE FOLLOWING TYPE AND QUANTITY: UPRIGHT - 20 HEADS.
 3. ALL MPL NUMBERS ARE PRECEDED BY 2T43 UNLESS NOTED OTHERWISE.
 4. SEE A-50361 FOR ANY VENDOR AND/OR CODE DEVIATIONS APPLICABLE TO THIS SPRINKLER SYSTEM.

- REFERENCES:**
- A-50360 HANGER DRAWINGS
 - A-50361 VENDOR DEVIATIONS AND CODE DEVIATIONS
 - B-24624 FIRE PROTECTION FCD EAST WATER CURTAIN EL. 185'-0" SYSTEM NO. 2T43185W04
 - H-11902 EQUIPMENT LAYOUT DRAWING - FIRE DETECTION SUPPRESSION MULTIPLEX SYSTEM 2T43 REACTOR BUILDING EL. 185'-0"
 - H-21017 UNIT NO. 2 - REACTOR AND RADWASTE BUILDINGS - FIRE PROTECTION SYSTEM P&ID
 - H-50362 FIRE PROTECTION - PIPING - SYSTEM NO. 2T43185W04 - ISOMETRIC - FLOOR EL. 185'-0" EAST
 - H-50363 FIRE PROTECTION - PIPING - SYSTEM NO. 2T43185W04 - PLAN - FLOOR EL. 185'-0"

	N425AM		N412AM
	N426AM		N413AM

PANEL P438AM

SYSTEM NO. 2T43185W04
EAST 185 WATER CURTAIN
FLOOR EL. 185'-0"

BOUNDARY DIAGRAM NO.: 2X43-B01-17
FUNCTION(S) NO.: 2X43-04
PREPARED BY: M D STEPHENS
DATE: 2/6/98
REVIEWED BY: ALEX MORRISON
DATE: 7/13/98

Revision: A Date: 10-21-99
APPROVED, ISSUED PER LICENSE RENEWAL BOUNDARY PACKAGES. DRAWING CREATED FROM H-50046, REV.1; BY TRM.

BY	CHK'D	APPR'D
TRM	MDS	ASK

LICENSE RENEWAL DOCUMENT
MPL NO. 2T43 ACAD14 HL50046

SOUTHERN COMPANY

LICENSE RENEWAL SCREENING FOR INFORMATION ONLY

EDWIN I. HATCH NUCLEAR PLANT UNIT No.2
FIRE PROTECTION-P&ID-REACTOR BLDG.
FLOOR EL. 185'-0" EAST 185 WATER CURTAIN

DRWING	DESIGNED	LOCATION	DOCUMENT NUMBER	REVISION
TRM	LCF	10-502	HL-50046	A
DATE	SCALE			
	None			