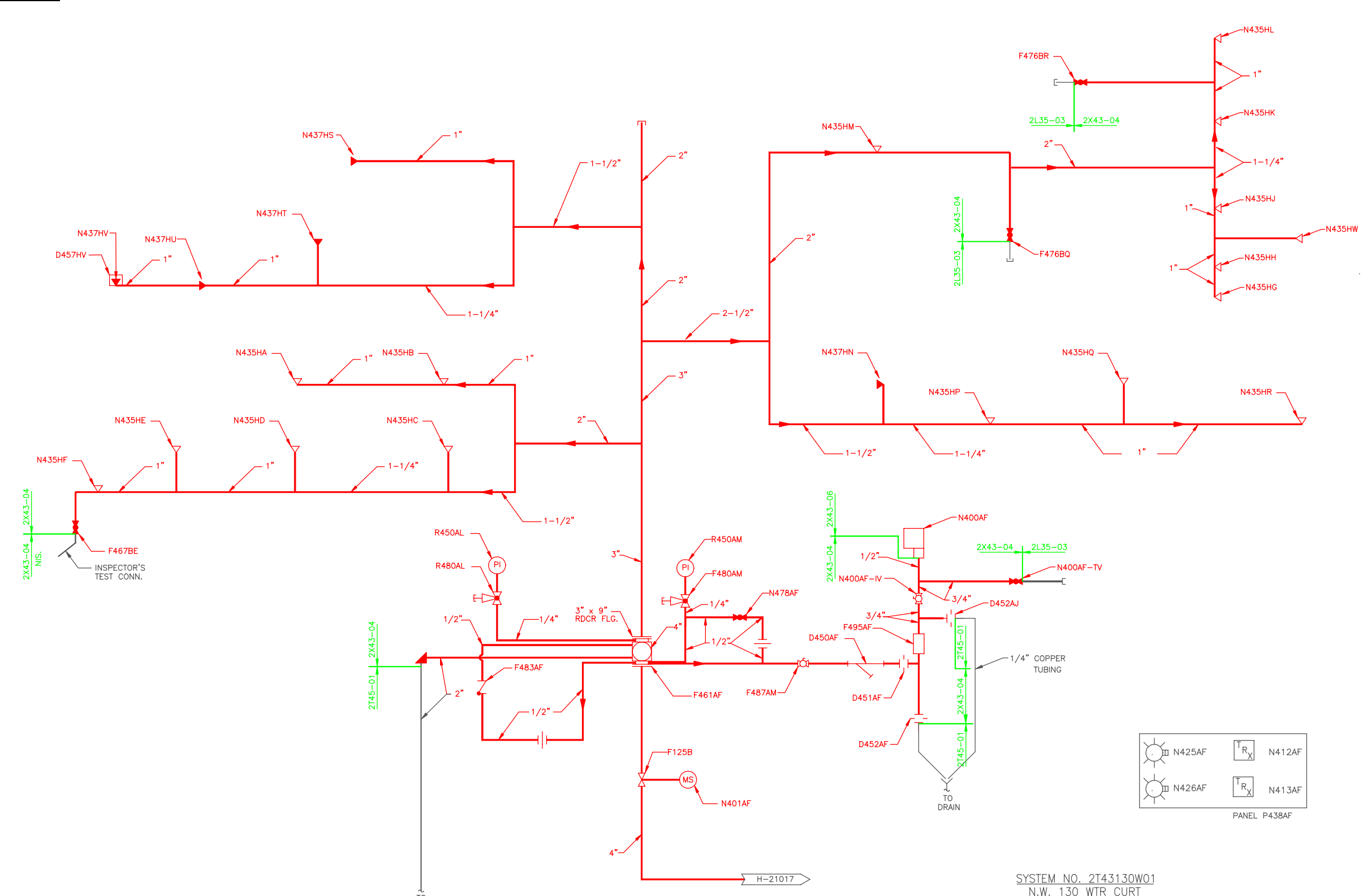


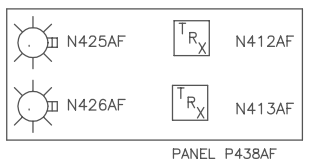
A
B
C
D
E
F
G
H
J



- LEGEND**
- PRESSURE SWITCH
 - PRESSURE INDICATOR
 - MONITOR SWITCH
 - INDICATING LIGHT
 - GLOBE VALVE (N.C.)
 - ANGLE GLOBE VALVE (N.C.)
 - STRAINER
 - ORIFICE
 - CHECK VALVE
 - GATE VALVE (N.O.)
 - BALL VALVE (N.O.)
 - SIDE OUTLET GLOBE VALVE (N.O.)
 - UPRIGHT SPRINKLER HEAD (N.C.)
 - PENDENT SPRINKLER HEAD (N.C.)
 - UNION
 - ALARM VALVE
 - EA-1 NOZZLE W/65° DEFLECTOR (TEMP. RATING OF 175°)
 - DRAIN FUNNEL
 - CAP
 - RETARD CHAMBER
 - PLUG
 - SPRINKLER W/CANOPY
 - CONCENTRIC REDUCER
 - ADDRESSABLE INTERFACE MODULE

- NOTES:**
- THE DESIGN OF THIS WET-PIPE SPRINKLER SYSTEM INCLUDES THE FOLLOWING HYDRAULIC DEMAND: 250 GPM FOR INSIDE HOSE AND 750 GPM FOR OUTSIDE HOSE. DEMANDS: 1668.4 GPM @118.4 PSI FOR A DENSITY OF 0.3 GPM/SQ. FT.
 - THIS SPRINKLER SYSTEM HAS SPRINKLER HEADS WITH 1/2" ORIFICE AT A TEMPERATURE RATING OF 212 F AND INCLUDES THE FOLLOWING TYPE AND QUANTITY: UPRIGHT, SSU-15 HEADS; PENDENT, SSP-5 HEADS.
 - ALL MPL NUMBERS ARE PRECEDED BY 2T43 UNLESS NOTED OTHERWISE.
 - SEE A-50372 FOR ANY VENDOR AND/OR CODE DEVIATIONS APPLICABLE TO THIS SPRINKLER SYSTEM.

- REFERENCES:**
- A-50371 HANGER DRAWINGS
 - A-50372 VENDOR DEVIATIONS AND CODE DEVIATIONS
 - B-24613 FIRE PROTECTION FCD N.W. WTR. CURT. EL. 130'-0" SYS. NO. 2T43130W01
 - H-11900 EQUIPMENT LAYOUT DRAWINGS - FIRE DETECTION SUPPRESSION MULTIPLEX SYSTEM 2T43 REACTOR BUILDING EL. 130'-0"
 - H-21017 REACTOR AND RADWASTE BUILDING - FIRE PROTECTION SYSTEM - P&ID
 - H-50373 FIRE PROTECTION PIPING - SYSTEM 2T43130W01 ISOMETRIC - FLOOR EL. 130'-0"
 - H-50374 FIRE PROTECTION PIPING - SYSTEM 2T43130W01 PLAN AND SECTIONS - FLOOR EL. 130'-0"



SYSTEM NO. 2T43130W01
N.W. 130 WTR CURT
FLOOR EL. 130'-0"

BOUNDARY DIAGRAM NO.: 2X43-B01-15
FUNCTION(S) NO.: 2X43-04
2X43-06
PREPARED BY: M. D. STEPHENS
DATE: 02-06-98
REVIEWED BY: ALEX MORRISON
DATE: 07-13-98

Revision: A Date: 1-4-2000
APPROVED, ISSUED PER LICENSE RENEWAL BOUNDARY PACKAGES. DRAWING CREATED FROM H-50044, REV. 1; BY ECB.

LICENSE RENEWAL DOCUMENT
MPL NO. 2T43 ACAD14 HL50044

SOUTHERN COMPANY

LICENSE RENEWAL SCREENING FOR INFORMATION ONLY

EDWIN I. HATCH NUCLEAR PLANT UNIT No.2
FIRE PROT - P&ID - REACTOR BLDG.
FL. EL. 130'-0" - NW
130 WATER CURTAIN

DATE	DESIGNED	LOCATION	DOCUMENT NUMBER	REVISION
ECB	LCF			
	SCALE	10-502	HL-50044	A