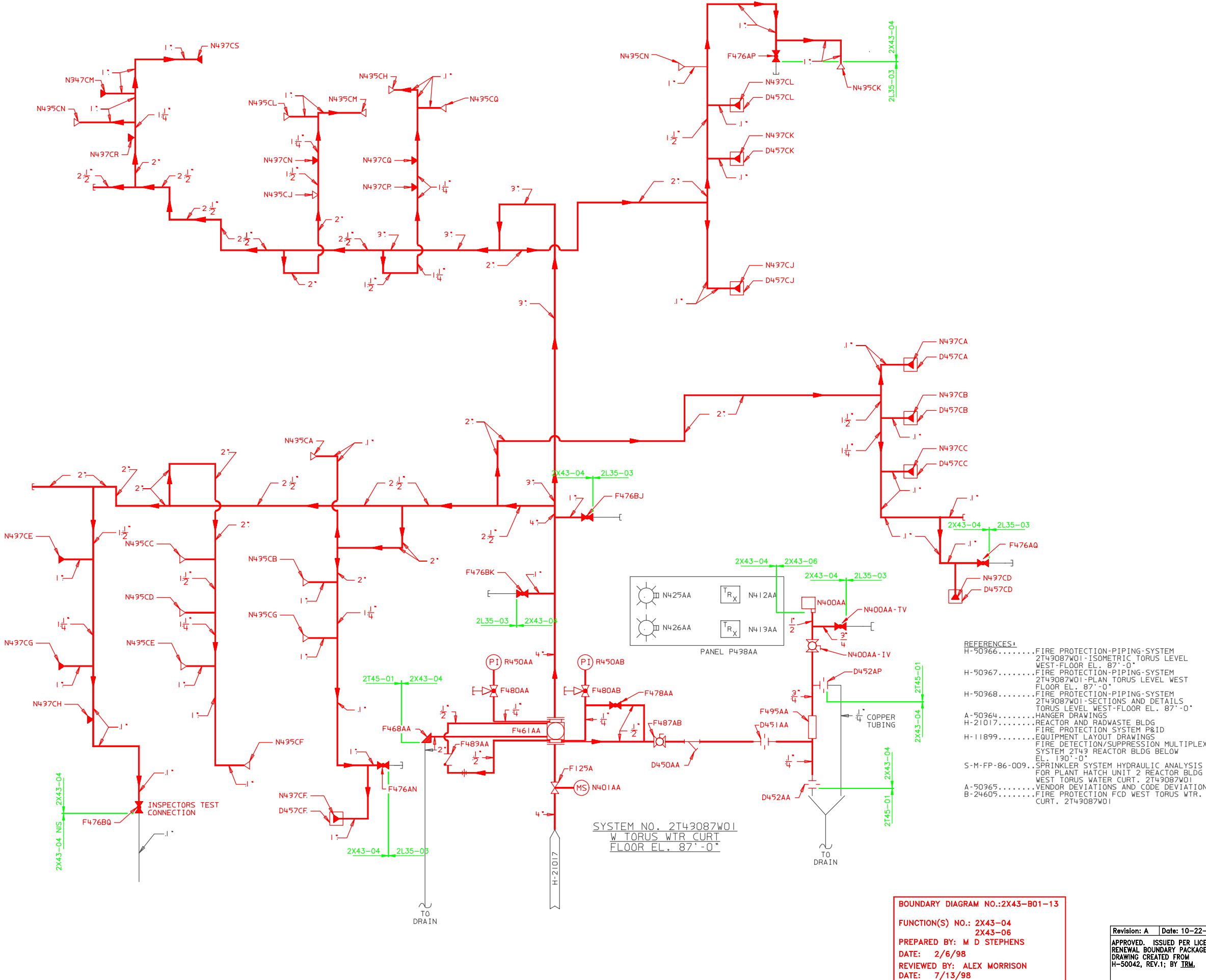


A
B
C
D
E
F
G
H
J



- LEGEND:**
- GLOBE VALVE (N.C.)
 - GATE VALVE (N.O.)
 - GATE VALVE (N.C.)
 - ANGLE VALVE (N.C.)
 - CHECK VALVE
 - BALL VALVE (N.C.)
 - BALL VALVE (N.O.)
 - SIDE OUTLET GLOBE VALVE
 - ALARM VALVE
 - PENDENT SPRINKLER HEAD
 - UPRIGHT SPRINKLER HEAD
 - SPRINKLER W/CANOPY
 - ORIFICE
 - FLOW DIRECTION
 - UNION
 - STRAINER
 - DRIP FUNNEL
 - CAP
 - PLUG
 - CONCENTRIC REDUCER
 - RETARD CHAMBER
 - MONITOR SWITCH
 - PRESSURE INDICATOR
 - FIRE ALARM SWITCH
 - ADDRESSABLE INTERFACE MODULE
 - INDICATING LIGHT

- REFERENCES:**
- H-50966..... FIRE PROTECTION-PIPING-SYSTEM 2T43087W01-ISOMETRIC TORUS LEVEL WEST-FLOOR EL. 87'-0"
 - H-50967..... FIRE PROTECTION-PIPING-SYSTEM 2T43087W01-PLAN TORUS LEVEL WEST FLOOR EL. 87'-0"
 - H-50968..... FIRE PROTECTION-PIPING-SYSTEM 2T43087W01-SECTIONS AND DETAILS TORUS LEVEL WEST-FLOOR EL. 87'-0"
 - A-50964..... HANGER DRAWINGS
 - H-21017..... REACTOR AND RADWASTE BLDG FIRE PROTECTION SYSTEM P&ID
 - H-11899..... EQUIPMENT LAYOUT DRAWINGS FIRE DETECTION/SUPPRESSION MULTIPLEX SYSTEM 2T43 REACTOR BLDG BELOW EL. 130'-0"
 - S-M-FP-86-009..... SPRINKLER SYSTEM HYDRAULIC ANALYSIS FOR PLANT HATCH UNIT 2 REACTOR BLDG WEST TORUS WATER CURT. 2T43087W01
 - A-50965..... VENDOR DEVIATIONS AND CODE DEVIATIONS
 - B-24609..... FIRE PROTECTION FCD WEST TORUS WTR. CURT. 2T43087W01

- NOTES:**
1. THE DESIGN OF THIS WET-PIPE SPRINKLER SYSTEM INCLUDES THE FOLLOWING HYDRAULIC DEMAND, WHICH INCLUDES 250 GPM FOR INSIDE HOSE AND 750 GPM FOR OUTSIDE HOSE DEMAND+1912 GPM AT 116.8 PSI FOR A DENSITY OF 0.3 GPM/SQ FT.
 2. THE SPRINKLER SYSTEM HAS SPRINKLER HEADS WITH A 1/2 INCH ORIFICE AT A TEMPERATURE RATING OF 212 DEGREES FAHRENHEIT AND INCLUDES THE FOLLOWING TYPE AND QUANTITY: UPRIGHT, SSP, 14 HEADS PENDENT, SSP, 17 HEADS
 3. ALL MPL NUMBERS TO BE PRECEDED BY 2T43.

SYSTEM NO. 2T43087W01
W TORUS WTR CURT
FLOOR EL. 87'-0"

BOUNDARY DIAGRAM NO.: 2X43-B01-13

FUNCTION(S) NO.: 2X43-04
2X43-06

PREPARED BY: M D STEPHENS
DATE: 2/6/98
REVIEWED BY: ALEX MORRISON
DATE: 7/13/98

LICENSE RENEWAL DOCUMENT

MPL NO. 2T43 ACAD14 HL50042

SOUTHERN COMPANY

LICENSE RENEWAL SCREENING FOR INFORMATION ONLY

EDWIN I. HATCH NUCLEAR PLANT UNIT No.2
FIRE PROT - P&ID - REACTOR BLDG
FL. EL. 87'-0"
WEST TORUS WATER CURTAIN

DATE	BY	REVISION
10-502	HL-50042	A

Revision: A Date: 10-22-99
APPROVED, ISSUED PER LICENSE RENEWAL BOUNDARY PACKAGES. DRAWING CREATED FROM H-50042, REV.1; BY TRM.

DATE	BY	REVISION
10-502	HL-50042	A