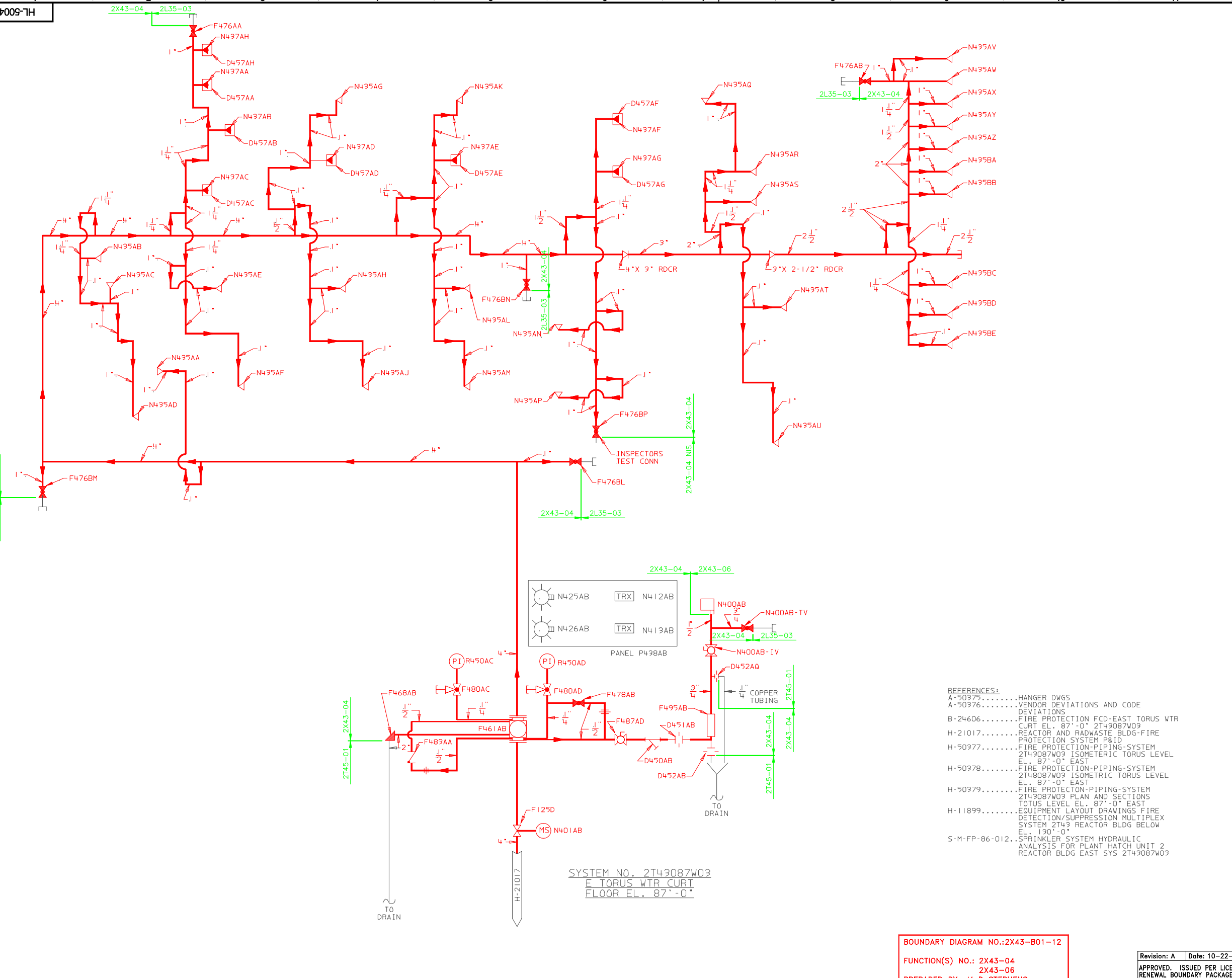


A
B
C
D
E
F
G
H
J



- LEGEND:
- GLOBE VALVE (N.C.)
 - GATE VALVE (N.O.)
 - GATE VALVE (N.C.)
 - ANGLE VALVE (N.C.)
 - CHECK VALVE
 - BALL VALVE (N.C.)
 - BALL VALVE (N.O.)
 - SIDE OUTLET GLOBE VALVE
 - ALARM VALVE
 - PENDENT SPRINKLER HEAD
 - UPRIGHT SPRINKLER HEAD
 - SPRINKLER W/CANOPY
 - ORIFICE
 - FLOW DIRECTION
 - UNION
 - STRAINER
 - DRAIN FUNNEL
 - CAP
 - PLUG
 - CONCENTRIC REDUCER
 - RETARD CHAMBER
 - MONITOR SWITCH
 - PRESSURE INDICATOR
 - FIRE ALARM SWITCH
 - ADDRESSABLE INTERFACE MODULE

- REFERENCES:
- A-50375.....HANGER DWGS
 - A-50376.....VENDOR DEVIATIONS AND CODE DEVIATIONS
 - B-24606.....FIRE PROTECTION FCD-EAST TORUS WTR CURT EL. 87'-0" 2T43087W03
 - H-21017.....REACTOR AND RADWASTE BLDG-FIRE PROTECTION SYSTEM P&ID
 - H-50377.....FIRE PROTECTION-PIPING-SYSTEM 2T43087W03 ISOMETRIC TORUS LEVEL EL. 87'-0" EAST
 - H-50378.....FIRE PROTECTION-PIPING-SYSTEM 2T48087W03 ISOMETRIC TORUS LEVEL EL. 87'-0" EAST
 - H-50379.....FIRE PROTECTION-PIPING-SYSTEM 2T43087W03 PLAN AND SECTIONS TOTUS LEVEL EL. 87'-0" EAST
 - H-11899.....EQUIPMENT LAYOUT DRAWINGS FIRE DETECTION/SUPPRESSION MULTIPLEX SYSTEM 2T43 REACTOR BLDG BELOW EL. 130'-0"
 - S-M-FP-86-012..SPRINKLER SYSTEM HYDRAULIC ANALYSIS FOR PLANT HATCH UNIT 2 REACTOR BLDG EAST SYS 2T43087W03

- NOTES:
1. THE DESIGN OF THIS WET-PIPE SPRINKLER SYSTEM INCLUDES THE FOLLOWING HYDRAULIC DEMAND WHICH INCLUDES 250 GPM FOR INSIDE HOSE AND 750 GPM FOR OUTSIDE HOSE DEMANDS+2087.7 GPM @ 121.5 PSI FOR A DENSITY OF 0.3 GPM/SQ.FT.
 2. THE SPRINKLER SYSTEM HAS SPRINKLER HEADS WITH A 1/2 INCH ORIFICE AT A TEMPERATURE RATING OF 212 DEGREES FAHRENHEIT AND INCLUDES THE FOLLOWING TYPE AND QUANTITY: UPRIGHT,SSU-29 HEADS PENDANT,SSP-8 HEADS.
 3. SEE INQUIRY SS-6914-31 FOR PIPE CLASS.
 4. ALL MPL NO.'S TO BE PRECEDEED BY 2T43.
 5. SEE A-50376 FOR ANY VENDOR AND/OR CODE DEVIATIONS APPLICABLE TO THIS SPRINKLER SYSTEM.

SYSTEM NO. 2T43087W03
E TORUS WTR CURT
FLOOR EL. 87'-0"

BOUNDARY DIAGRAM NO.:2X43-B01-12
FUNCTION(S) NO.: 2X43-04
2X43-06
PREPARED BY: M D STEPHENS
DATE: 2/6/98
REVIEWED BY: ALEX MORRISON
DATE: 7/13/98

Revision: A Date: 10-22-99
APPROVED, ISSUED PER LICENSE RENEWAL BOUNDARY PACKAGES.
DRAWING CREATED FROM HL-50041, REV.1; BY TRM.

BY	CHK'D	APPR'D
TRM	MDS	ASK

LICENSE RENEWAL DOCUMENT

MPL NO. 2T43 ACAD14 HL50041

SOUTHERN COMPANY

LICENSE RENEWAL SCREENING FOR INFORMATION ONLY

EDWIN I. HATCH NUCLEAR PLANT UNIT No.2
FIRE PROT. - P&ID REACTOR BLDG
FL EL. 87'-0"
EAST TORUS WATER CURTAIN

DRAWN	DESIGNED	LOCATION	DOCUMENT NUMBER	REVISION
TRM	LCF	10-502	HL-50041	A