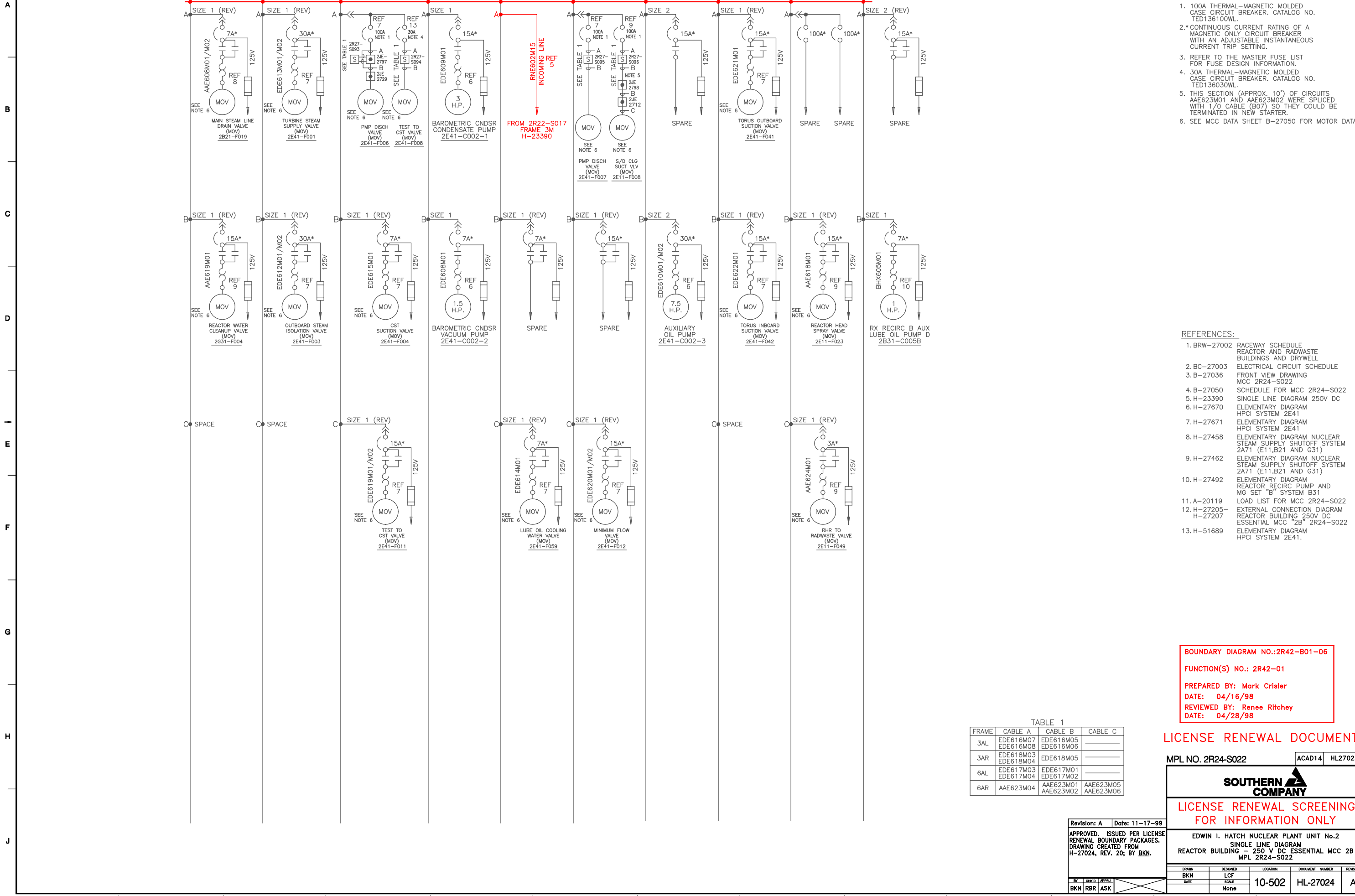


REACTOR BUILDING  
250V DC MCC 2B(2R24-S022)



- NOTES:
- 100A THERMAL-MAGNETIC MOLDED CASE CIRCUIT BREAKER. CATALOG NO. TED136100WL.
  - CONTINUOUS CURRENT RATING OF A MAGNETIC ONLY CIRCUIT BREAKER WITH AN ADJUSTABLE INSTANTANEOUS CURRENT TRIP SETTING.
  - REFER TO THE MASTER FUSE LIST FOR FUSE DESIGN INFORMATION.
  - 30A THERMAL-MAGNETIC MOLDED CASE CIRCUIT BREAKER. CATALOG NO. TED136030WL.
  - THIS SECTION (APPROX. 10') OF CIRCUITS AAE623M01 AND AAE623M02 WERE SPLICED WITH 1/0 CABLE (B07) SO THEY COULD BE TERMINATED IN NEW STARTER.
  - SEE MCC DATA SHEET B-27050 FOR MOTOR DATA.

- REFERENCES:
- BRW-27002 RACEWAY SCHEDULE REACTOR AND RADWASTE BUILDINGS AND DRYWELL
  - BC-27003 ELECTRICAL CIRCUIT SCHEDULE
  - B-27036 FRONT VIEW DRAWING MCC 2R24-S022
  - B-27050 SCHEDULE FOR MCC 2R24-S022
  - H-23390 SINGLE LINE DIAGRAM 250V DC
  - H-27670 ELEMENTARY DIAGRAM HPCI SYSTEM 2E41
  - H-27671 ELEMENTARY DIAGRAM HPCI SYSTEM 2E41
  - H-27458 ELEMENTARY DIAGRAM NUCLEAR STEAM SUPPLY SHUTOFF SYSTEM 2A71 (E11,B21 AND G31)
  - H-27462 ELEMENTARY DIAGRAM NUCLEAR STEAM SUPPLY SHUTOFF SYSTEM 2A71 (E11,B21 AND G31)
  - H-27492 ELEMENTARY DIAGRAM REACTOR RECIRC PUMP AND MG SET "B" SYSTEM B31
  - A-20119 LOAD LIST FOR MCC 2R24-S022
  - H-27205- H-27207 EXTERNAL CONNECTION DIAGRAM REACTOR BUILDING 250V DC ESSENTIAL MCC "2B" 2R24-S022
  - H-51689 ELEMENTARY DIAGRAM HPCI SYSTEM 2E41.

BOUNDARY DIAGRAM NO.: 2R42-B01-06  
 FUNCTION(S) NO.: 2R42-01  
 PREPARED BY: Mark Crisler  
 DATE: 04/16/98  
 REVIEWED BY: Renee Ritchey  
 DATE: 04/28/98

TABLE 1

FRAME	CABLE A	CABLE B	CABLE C
3AL	EDE616M07 EDE616M08	EDE616M05 EDE616M06	
3AR	EDE618M03 EDE618M04	EDE618M05	
6AL	EDE617M03 EDE617M04	EDE617M01 EDE617M02	
6AR	AAE623M04	AAE623M01 AAE623M02	AAE623M05 AAE623M06

LICENSE RENEWAL DOCUMENT

MPL NO. 2R24-S022 ACAD14 HL27024

**SOUTHERN COMPANY**

LICENSE RENEWAL SCREENING FOR INFORMATION ONLY

EDWIN I. HATCH NUCLEAR PLANT UNIT No.2  
 SINGLE LINE DIAGRAM  
 REACTOR BUILDING - 250 V DC ESSENTIAL MCC 2B  
 MPL 2R24-S022

BY	CHK'D	APPR'D	DATE	SCALE	LOCATION	DOCUMENT NUMBER	REVISION
BKN	LCF			None	10-502	HL-27024	A

Revision: A Date: 11-17-99  
 APPROVED, ISSUED PER LICENSE RENEWAL BOUNDARY PACKAGES. DRAWING CREATED FROM H-27024, REV. 20; BY BKN.