

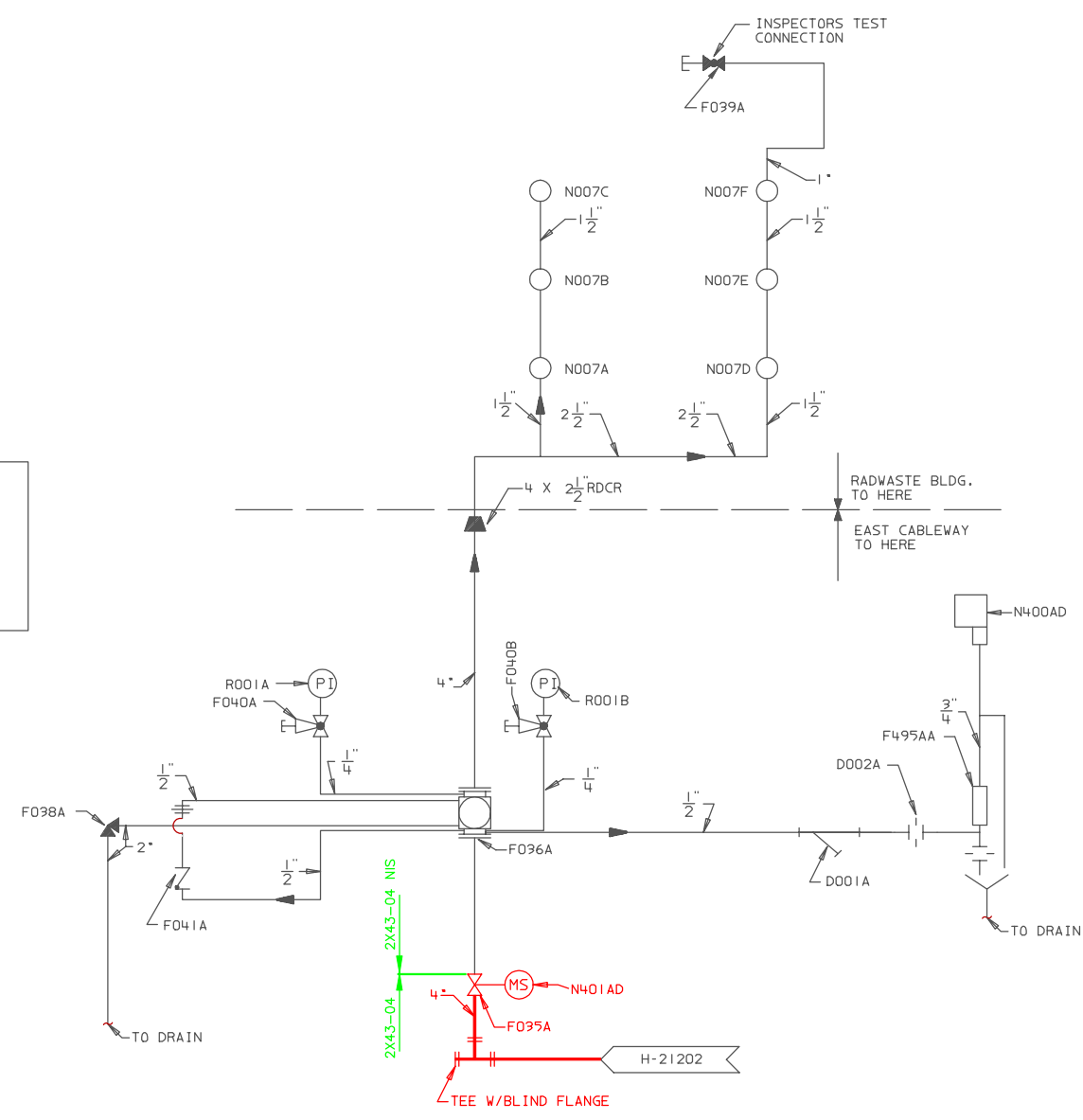
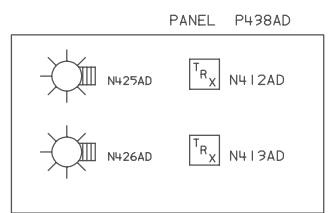
A
B
C
D
E
F
G
H
J

- LEGEND:
- ADDRESSABLE INTERFACE MODULE
 - ALARM VALVE
 - GLOBE VALVE (N.C.)
 - CAP
 - ANGLE VALVE (N.C.)
 - CHECK VALVE
 - RETARD CHAMBER
 - UNION
 - MONITOR SWITCH
 - PRESSURE INDICATOR
 - SIDE OUTLET GLOBE VALVE (N.O.)
 - GATE VALVE (N.O.)
 - STRAINER
 - DRIP FUNNEL
 - FLOW DIRECTION
 - PRESSURE SWITCH
 - RESTRICTING ORIFICE
 - UPRIGHT SPRINKLER HEAD
 - INDICATING LIGHT
 - REDUCER

NOTES:

1. ALL MPL NO.'S TO BE PREFIXED BY 2V43 UNLESS OTHERWISE NOTED.

- REFERENCES:
- H-26373 FIRE PROT-PIPING-RAD WASTE BLDG-EL 132'-6"
 - H-26376 FIRE PROT-PIPING-ISOMETRIC-RAD WASTE BLDG-EL 132'-6"
 - BM-50032 FIRE PROT-PIPING-RAD WASTE BLDG-DRY WASTE SYS BM SH. 1 & 2
 - S-60012 UNIT 2 EAST CABLEWAY SPRINKLER SYSTEM
 - H-26375 RFP OIL CONDITIONER
 - H-21176 TURBINE BLDG FIRE PROT-SYS PLAN
 - H-21016 TURBINE BLDG SYS P&ID
 - H-21202 TURBINE BLDG FIRE PROT P&ID SH. 5
 - B-24662 FIRE PROT-FCO 2V43132W04



SYSTEM NO. 2V43132W04
 DRY WASTE STORAGE
 FLR. EL. 132'-0"

BOUNDARY DIAGRAM NO.: 2X43-B01-05
 FUNCTION(S) NO.: 2X43-04
 PREPARED BY: M D STEPHENS
 DATE: 2/6/98
 REVIEWED BY: ALEX MORRISON
 DATE: 7/13/98

Revision: A Date: 11-03-99
 APPROVED, ISSUED PER LICENSE RENEWAL BOUNDARY PACKAGES. DRAWING CREATED FROM H-26372 SH.1, REV.5; BY TRM.

BY	CHK'D	APPR'D
TRM	MDS	ASK

LICENSE RENEWAL DOCUMENT

MPL NO. 2V43 ACAD14 HL26372

SOUTHERN COMPANY

LICENSE RENEWAL SCREENING FOR INFORMATION ONLY

EDWIN I. HATCH NUCLEAR PLANT UNIT No.2
 FIRE PROTECTION PIPING
 RADWASTE BLDG DRYWASTE STORAGE AREA SPRINKLER SYS P&ID

DATE	DESIGNED	LOCATION	DOCUMENT NUMBER	REVISION
	TRM	LCF	10-502	HL-26372
		SCALE		A
		None		