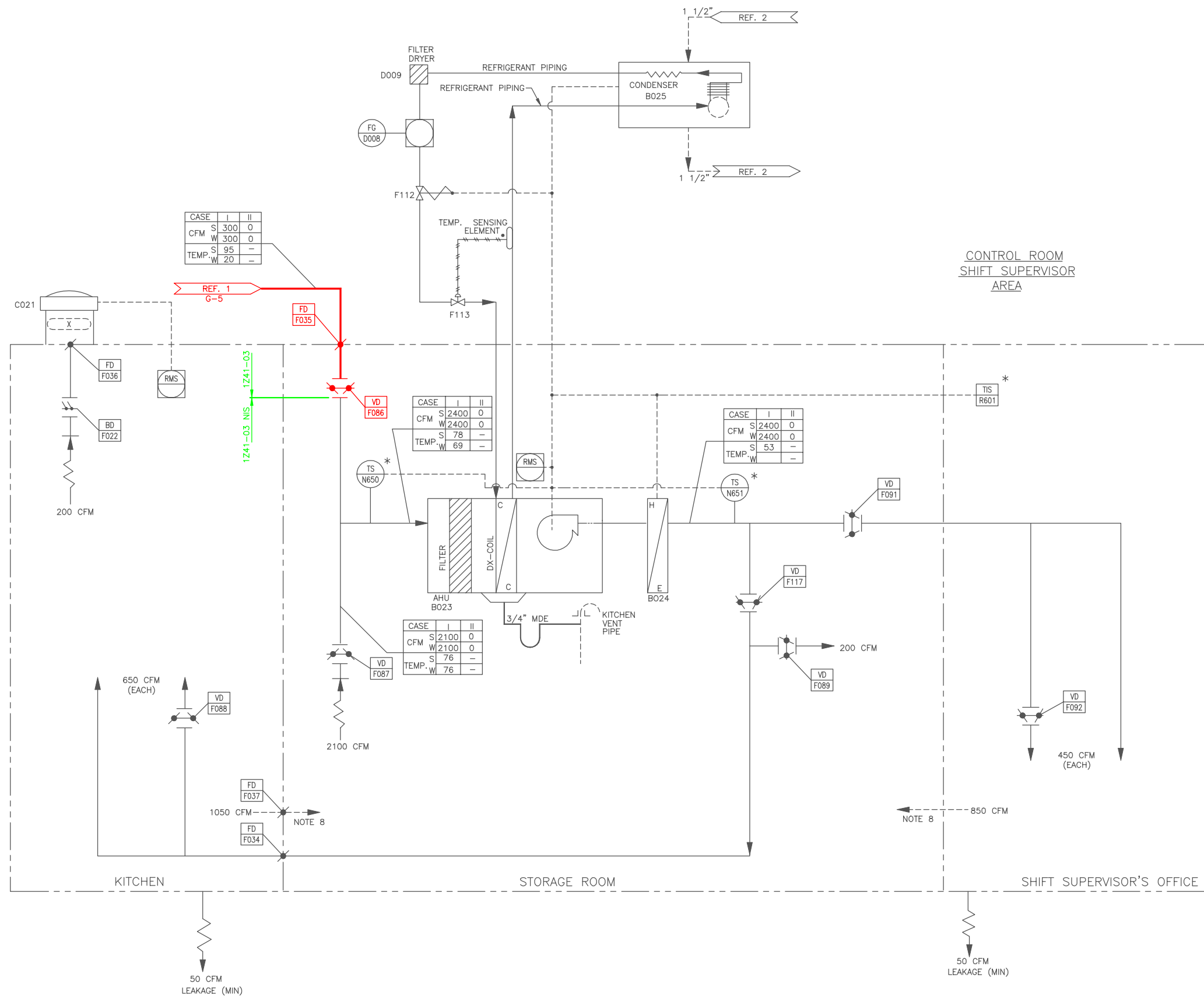


1. ALL EQUIPMENT AND INSTRUMENT NUMBERS ON THIS DRAWING PRECEDED BY Z41.
2. DESCRIPTION OF CASES: I NORMAL MODE II EMERGENCY MODE
3. ALL CFM SHALL BE ADJUSTED ±5%.
4. DUCTING TO BE WELDED CONSTRUCTION UP TO FD-F035
5. DELETED
6. * FURNISHED WITH ASSOCIATED EQUIPMENT.
7. DELETED
8. RETURN AIR PENETRATES WALL THROUGH OPENING LOCATED ABOVE THE DROP CEILING. RETURN AIR ENTERS CEILING SPACE THROUGH REGISTERS.

REFERENCES

TITLE	MPL No.	DWG.
1. CONTROL BLDG. - CONTROL & CABLE SPREADING ROOMS A.C. P&ID.	Z41-1050	H-16042
2. SERVICE WATER SYS. P&ID SHEET 2		H-11609
3. CONTROL BLDG - CABLE SPREADING ROOM EL. 147'-0" A/C PROCESS FLOW DIAGRAM	Z41-1090	H-16046
4. CONTROL ROOM SHIFT SUPERVISOR OFFICE HVAC - PLANS & SECTION		H-26117



CASE	I	II
CFM S	300	0
CFM W	300	0
TEMP S	95	-
TEMP W	20	-

CASE	I	II
CFM S	2400	0
CFM W	2400	0
TEMP S	78	-
TEMP W	69	-

CASE	I	II
CFM S	2400	0
CFM W	2400	0
TEMP S	53	-
TEMP W	-	-

CASE	I	II
CFM S	2100	0
CFM W	2100	0
TEMP S	76	-
TEMP W	76	-

BOUNDARY DIAGRAM NO.: 1Z41-B01-08
 FUNCTION(S) NO.: 1Z41-03
 2Z41-03
 PREPARED BY: ED DAVIDSON
 DATE: 5/14/98
 REVIEWED BY: WILLIE JENNINGS
 DATE: 5/26/98

LICENSE RENEWAL DOCUMENT

MPL NO. Z41-1010 ACAD14 HL26116



LICENSE RENEWAL SCREENING FOR INFORMATION ONLY

EDWIN I. HATCH NUCLEAR PLANT UNIT No. 1 & 2
 CONTROL ROOM SHIFT SUPERVISOR'S AREA
 H.V.A.C. P&ID & P.F.D.

Revision: A Date: 1-5-2000
 APPROVED. ISSUED PER LICENSE RENEWAL BOUNDARY PACKAGES. DRAWING CREATED FROM H-26116, REV.2; BY TRM.

BY	CHKD	APPR	LOCATION	DOCUMENT NUMBER	REVISION
TRM	ED	ASK		10-502	HL-26116
					A