

- 17. CLASS I.E. DIV.1 ANALOG SIGNAL CONVERSION/ISOLATION SYS. I.E.D. 2X75-1010 H-26285
- 18. CLASS I.E. DIV.2 ANALOG SIGNAL CONVERSION/ISOLATION SYS. I.E.D. 2X75-1010 H-26286
- 19. DIGITAL INPUT SIGNALS TO THE ERF COMPUTER SYSTEM I.E.D. SHEET 10 OF 15. 2X75-1010 H-26278
- 20. DIGITAL INPUT SIGNAL TO THE ERF COMPUTER SYSTEM I.E.D. SHEET 9 OF 15. 2X75-1010 H-26277
- 21. DIGITAL INPUT SIGNAL TO THE ERF COMPUTER SYSTEM I.E.D. SHEET 15 OF 15. 2X75-1010 H-26295
- 22. ROIC SYSTEM P&ID 2E51-1010 H-26023

VALVE TAG NO.	SV-A	SV-B
2T48-F361A	2T48-F365	2T48-F360
2T48-F361B	2T48-F367	2T48-F368
2T48-F362A	2T48-F369	2T48-F370
2T48-F362B	2T48-F371	2T48-F372
2T48-F363A	2T48-F373	2T48-F374
2T48-F363B	2T48-F375	2T48-F376
2T48-F364A	2T48-F377	2T48-F378
2T48-F364B	2T48-F379	2T48-F380

NOTES

- EQUIPMENT AND INSTRUMENT NOS. ON THIS DWG. PRECEDED BY 2T48; EXAMPLE: 2T48-C003 EXCEPT AS INDICATED. SEE NOTES 2 & 3.
- SWITCHES AND LIGHTS INDICATED BY THIS NOTE ARE PART OF THE P.C.I.S. SYSTEM (PRIMARY CONTAINMENT ISOLATION SYSTEM) MPL C061 AND ARE MOUNTED ON BENCHBOARDS 2H11-P601 OR 2H11-P602.
- INDICATING LIGHTS LOCATED ON GRAPHIC DISPLAY ON BENCHBOARD.
- DELETED
- LEAKOFF CONNECTION ON VALVE TO BE USED FOR LOCAL LEAK RATE TESTING.
- VALVES ON THIS DWG. ARE NUMBERED F0021 THRU F0040 FOR DRAIN VALVES FV021 THRU FV040 FOR VENT VALVES.
- BYPASS PERMISSIVE KEYLOCK SWITCHES, ONE FOR EACH OF THE FOLLOWING P.C.I.S. SIGNALS; A. HIGH DRYWELL PRESSURE B. LOW R.P.V. LEVEL C. REACTOR BUILDING HIGH RADIATION D. REFUELING FLOOR HIGH RADIATION
- VALVE ISOLATES ON HIGH MAIN STEAM LINE PRESSURE. BYPASS PERMISSIVE KEYLOCK SWITCH OVERRIDES MAIN STEAM LINE SIGNAL ONLY AND ARE MOUNTED ON BENCHBOARD 2H1-C063.
- AUTO/MANUAL CHART SPEED 1/15"/HOUR SELECTOR.
- VALVES 2T48-F307, F308, F309, F318, F319, F320, F324 & F326 AIR OPERATORS MECHANICALLY LIMIT VALVE TRAVEL TO 50 DEGREES OPEN.
- ISOLATION SIGNAL ON HIGH DRYWELL PRESSURE, LOW R.P.V. LEVEL, REACTOR BUILDING HIGH RADIATION, REFUELING FLOOR HIGH RADIATION OR DRYWELL HIGH RADIATION. (FOR VALVES 2T48-F307, F308, F309, F318, F319, F320, F324 & F326)
- VALVES 2T48-F342A THRU L SHALL BE INSTALLED SUCH THAT THE VALVE BODY FLOW ARROW INDICATES FLOW FROM THE TORUS TO VALVES 2T48-F343A THRU L.
- VALVES 2T48-F307 AND 2T48-F308 SHALL BE INSTALLED IN THE PIPELINE SUCH THAT THE FLAT FACE OF THE VALVE DISC IS FACING THE DRYWELL. VALVES 2T48-F309 AND 2T48-F324 SHALL BE INSTALLED IN THE PIPELINE SUCH THAT THE FLAT FACE OF THE VALVE DISC IS FACING THE TORUS. VALVES 2T48-F310 AND 2T48-F311 SHALL BE INSTALLED IN THE PIPELINE SUCH THAT THE FLAT FACE OF THE VALVE DISC IS FACING THE TORUS. THE FLOW ARROWS ON 2T48-F307, 2T48-F308, 2T48-F309, 2T48-F310, 2T48-F311 AND 2T48-F324 MAY BE DISREGARDED. THE "STOP" INTERNAL TO THE VALVE BODY SHALL BE ON THE SIDE FACING THE DRYWELL OR TORUS.
- NON-INTERRUPTIBLE AIR SUPPLY.

REFERENCES

REFERENCE	MPL. NO.	S.S. NO.
1. REACTOR BUILDING VENTILATION FLOW DIAG. SYSTEM P&ID.	2T41-1020	H-26069 & 70
2. NITROGEN INERTING SYSTEM P&ID.	2T48-1010	H-26083
3. PIPING & INSTRUMENT SYMBOLS.	A42-1010	S15051
4. R.H.R. SYS. P&ID.	2E11-1010	H-26014 & 15
5. STANDBY GAS TREATMENT SYSTEM.	2T46-1010	H-26078
6. REACTOR BUILDING VENTILATION P&ID.	2T41-1010	H-26067 & 68
7. PRIMARY CONTAINMENT COOLING SYSTEM P&ID.	2T47-1010	H-26074
8. PRIMARY CONTAINMENT ISOLATION SYSTEM.	2C61-1040	H-27596 THRU H-27598
9. PROCESS RADIATION MONITORING SYSTEM.	2D11-1010	H-26011 H-26012 H-26020
10. HPCL SYS. P&ID.	2E41-1010	H-26021 H-26022
11. DRYWELL TO TORUS DIFFERENTIAL PRESSURE SYS. P&ID.	2T48-1030	H-26079
12. FISSION PRODUCTS/POST-LOCA MONITORING SYSTEM P&ID.	2D11-1010	H-26017
13. TORUS DRAINAGE & PURIFICATION SYSTEM P&ID & PFD.	2G51-1010/1020	H-26042
14. NUCLEAR BOILER SYSTEM P&ID SHEET 2.	2B21-1010	H-26001
15. CLASS I.E. ANALOG SIGNAL CONVERSION/ISOLATION SYSTEM IED.	2X75-1010	H-26284
16. DELETED		

LICENSE RENEWAL DOCUMENT

MPL NO. 2T48-1020 ACAD14 HL26084

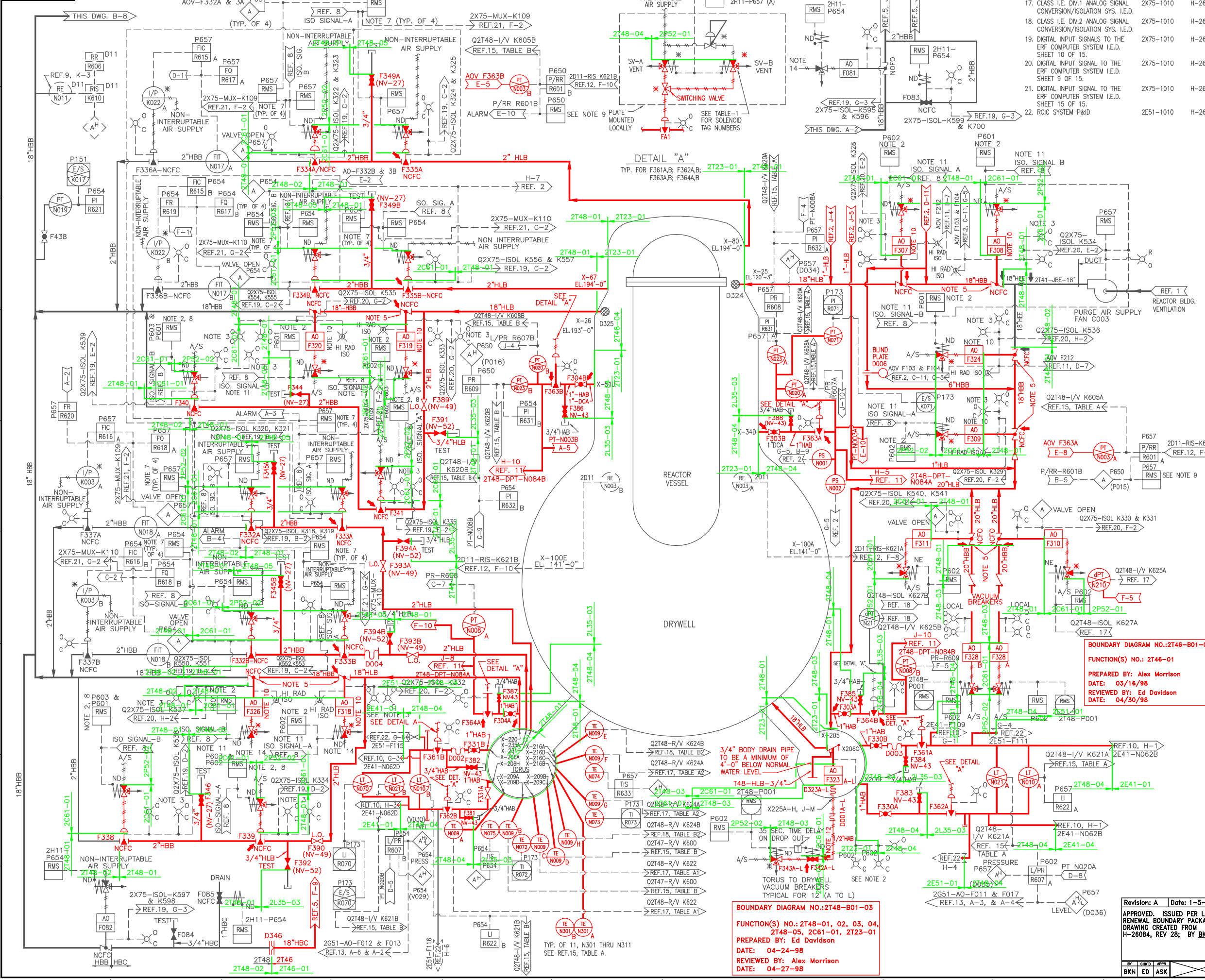


LICENSE RENEWAL SCREENING FOR INFORMATION ONLY

EDWIN I. HATCH NUCLEAR PLANT UNIT No.2 PRIMARY CONTAINMENT PURGE & INERTING SYSTEM P&ID.

Revision: A Date: 1-5-2000
 APPROVED. ISSUED PER LICENSE RENEWAL BOUNDARY PACKAGE. DRAWING CREATED FROM H-26084, REV 28; BY BKN.

BY	CHKD	APPR	DATE	SCALE	LOCATION	DOCUMENT NUMBER	REVISION
BKN	ED	ASK		NONE	10-502	HL-26084	A



BOUNDARY DIAGRAM NO.: 2T48-B01-03
 FUNCTION(S) NO.: 2T48-01, 02, 03, 04, 2T48-05, 2C61-01, 2T23-01
 PREPARED BY: Ed Davidson
 DATE: 04-24-98
 REVIEWED BY: Alex Morrison
 DATE: 04-27-98

BOUNDARY DIAGRAM NO.: 2T46-B01-02
 FUNCTION(S) NO.: 2T46-01
 PREPARED BY: Alex Morrison
 DATE: 03/16/98
 REVIEWED BY: Ed Davidson
 DATE: 04/30/98