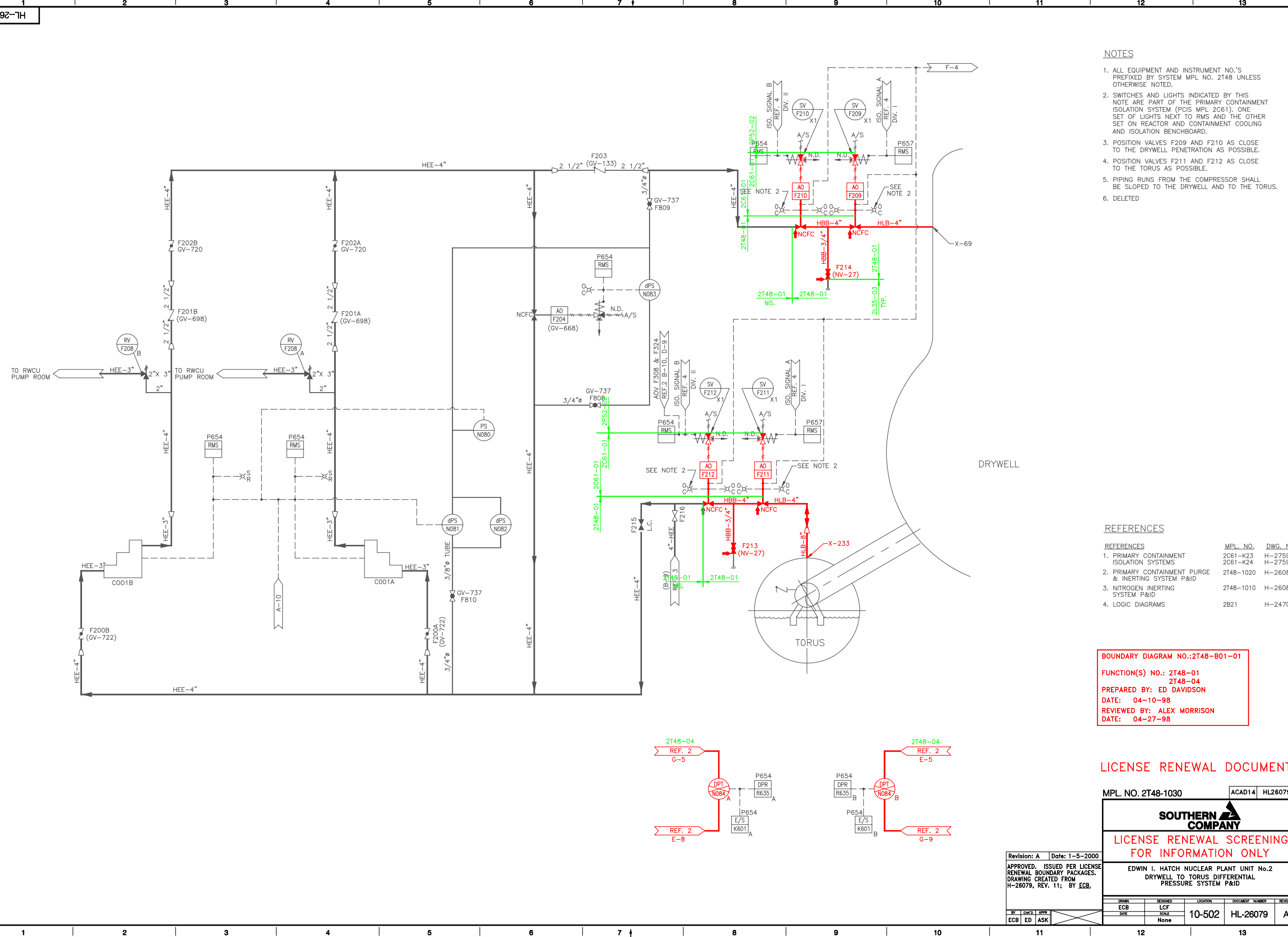


A  
B  
C  
D  
E  
F  
G  
H  
J

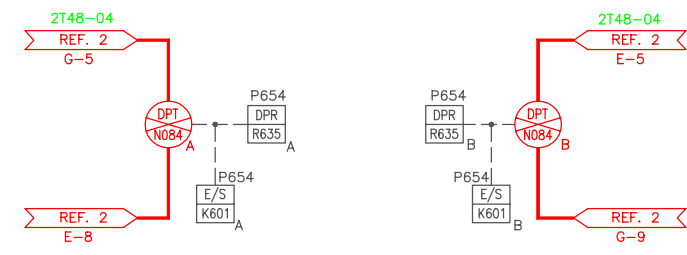


- NOTES**
1. ALL EQUIPMENT AND INSTRUMENT NO.'S PREFIXED BY SYSTEM MPL NO. 2T48 UNLESS OTHERWISE NOTED.
  2. SWITCHES AND LIGHTS INDICATED BY THIS NOTE ARE PART OF THE PRIMARY CONTAINMENT ISOLATION SYSTEM (PCIS MPL 2C61); ONE SET OF LIGHTS NEXT TO RMS AND THE OTHER SET ON REACTOR AND CONTAINMENT COOLING AND ISOLATION BENCHBOARD.
  3. POSITION VALVES F209 AND F210 AS CLOSE TO THE DRYWELL PENETRATION AS POSSIBLE.
  4. POSITION VALVES F211 AND F212 AS CLOSE TO THE TORUS AS POSSIBLE.
  5. PIPING RUNS FROM THE COMPRESSOR SHALL BE SLOPED TO THE DRYWELL AND TO THE TORUS.
  6. DELETED

**REFERENCES**

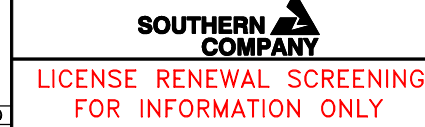
REFERENCES	MPL. NO.	DWG. NO.
1. PRIMARY CONTAINMENT ISOLATION SYSTEMS	2C61-K23	H-27597
2. PRIMARY CONTAINMENT PURGE & INERTING SYSTEM P&ID	2T48-1020	H-26084
3. NITROGEN INERTING SYSTEM P&ID	2T48-1010	H-26083
4. LOGIC DIAGRAMS	2B21	H-24704

**BOUNDARY DIAGRAM NO.: 2T48-B01-01**  
**FUNCTION(S) NO.:** 2T48-01  
 2T48-04  
**PREPARED BY:** ED DAVIDSON  
**DATE:** 04-10-98  
**REVIEWED BY:** ALEX MORRISON  
**DATE:** 04-27-98



**LICENSE RENEWAL DOCUMENT**

MPL. NO. 2T48-1030 ACAD14 HL26079



**LICENSE RENEWAL SCREENING FOR INFORMATION ONLY**

EDWIN I. HATCH NUCLEAR PLANT UNIT No.2  
 DRYWELL TO TORUS DIFFERENTIAL PRESSURE SYSTEM P&ID

Revision: A Date: 1-5-2000  
 APPROVED, ISSUED PER LICENSE RENEWAL BOUNDARY PACKAGES. DRAWING CREATED FROM H-26079, REV. 11; BY ECB.

BY	CHK'D	APPR.	LOCATION	DOCUMENT NUMBER	REVISION
ECB	ED	ASK			

DESIGNED	SCALE	DATE	10-502	HL-26079	A
LCF	None				