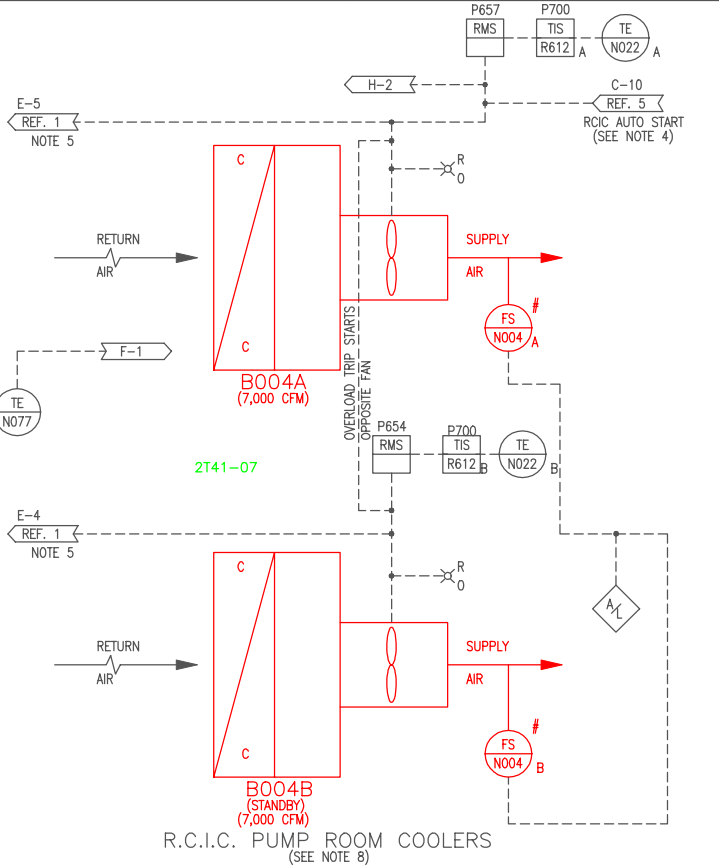
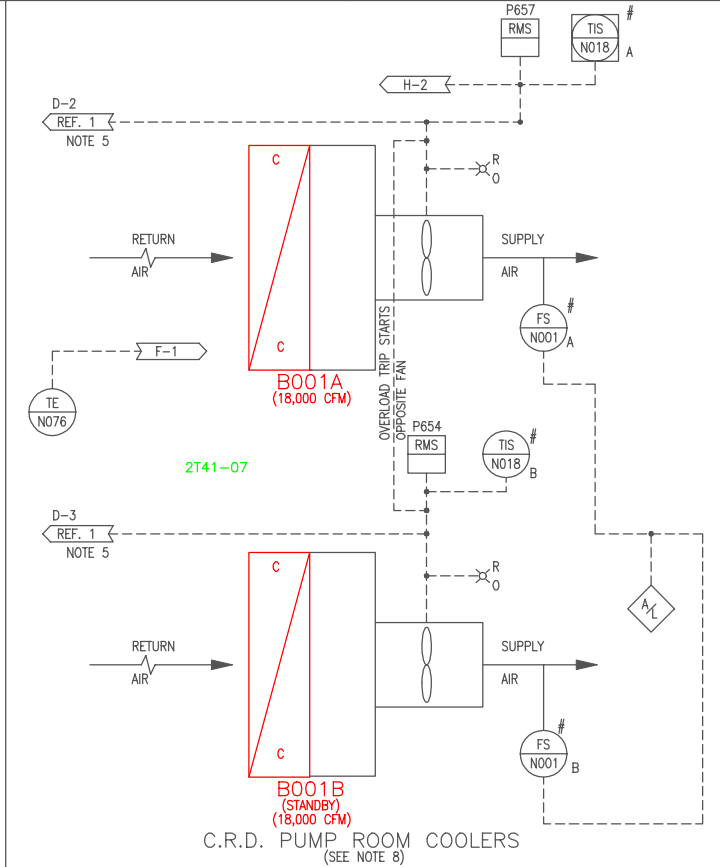
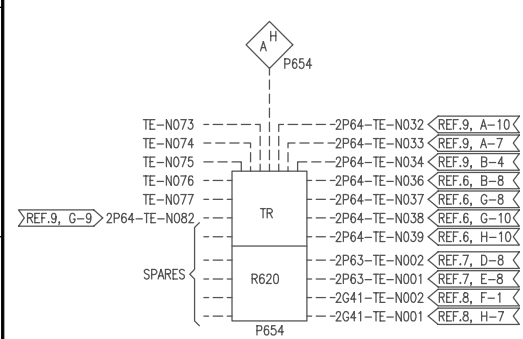


- NOTES**
1. AUTOMATIC START SIGNAL FROM VALVE CONTACT 2E41-F001.
 2. AUTOMATIC START SIGNAL FROM PUMPS STARTER CIRCUIT 2E11-C002B, D AND OR 2E21-C001B.
 3. AUTOMATIC START SIGNAL FROM PUMPS STARTER CIRCUIT 2E11-C002A, C AND OR 2E21-C001A.
 4. AUTOMATIC START SIGNAL FROM VALVE CONTACT 2E51-F045.
 5. DE-ENERGIZE SOLENOID VALVE ON RESPECTIVE FAN OPERATION TO OPEN AIR OPERATED VALVE.
 6. ALL EQUIPMENT AND INSTRUMENT NOS. ON THIS DWG. ARE PRECEDED BY 2T41.
 7. # INDICATES INSTRUMENT SUPPLIED BY HVAC CONTRACTOR.
 8. ALL DRAINS FROM COOLING UNIT DRIP PANS TO BE ROUTED TO NEAREST FLOOR DRAIN.
 9. ALL FLOW SWITCH AND TEST PORT ISOLATION VALVES ARE 1/4" KUPNO MODEL 4J GATE VALVES.

REFERENCES

REFERENCES	MPL. NO.	SS. NO.
1. REACTOR BLDG PLANT SERVICE WTR. SYS. P&ID	2P41-1010	H-26050 H-26051
2. HPCI SYS P&ID	2E41-1010	H-26020
3. RHR SYS P&ID	2E11-1010	H-26014
4. CORE SPRAY SYS P&ID	2E21-1010	H-26018
5. RCIC SYS P&ID	2E51-1010	H-26024
6. PRIMARY CONTAINMENT CHILLED WTR. SYS. P&ID & P.F.D. SHT. 1	2P64-1010	H-26080
7. T.B. CHILLED WATER SYS P&ID	2P63-1010	H-26088
8. FUEL POOL COOLING SYS P&ID	2G41-1010	H-26039
9. PRIMARY CONTAINMENT CHILLED WTR. SYS. P&ID & P.F.D. SHT. 2	2P64-1010	H-26081



BOUNDARY DIAGRAM NO.: 2T41-B02-01
FUNCTION(S) NO.: 2T48-02, 2T48-07
PREPARED BY: Ed Davidson
DATE: 04/06/98
REVIEWED BY: Alex Morrison
DATE: 05/04/98

LICENSE RENEWAL DOCUMENT

MPL NO. 2T41-1010 ACAD14 HL26071



LICENSE RENEWAL SCREENING FOR INFORMATION ONLY

EDWIN I. HATCH NUCLEAR PLANT No.2
SAFEGUARD EQUIP. EMERGENCY COOLING SYSTEM P&ID

Revision: A Date: 12-30-99
APPROVED, ISSUED PER LICENSE RENEWAL BOUNDARY PACKAGES. DRAWING CREATED FROM H-26071, REV 8; BY BKN.

BY	CHKD	APPR	DATE	SCALE	LOCATION	DOCUMENT NUMBER	REVISION
BKN	EPD	ASK		None	10-502	HL-26071	A