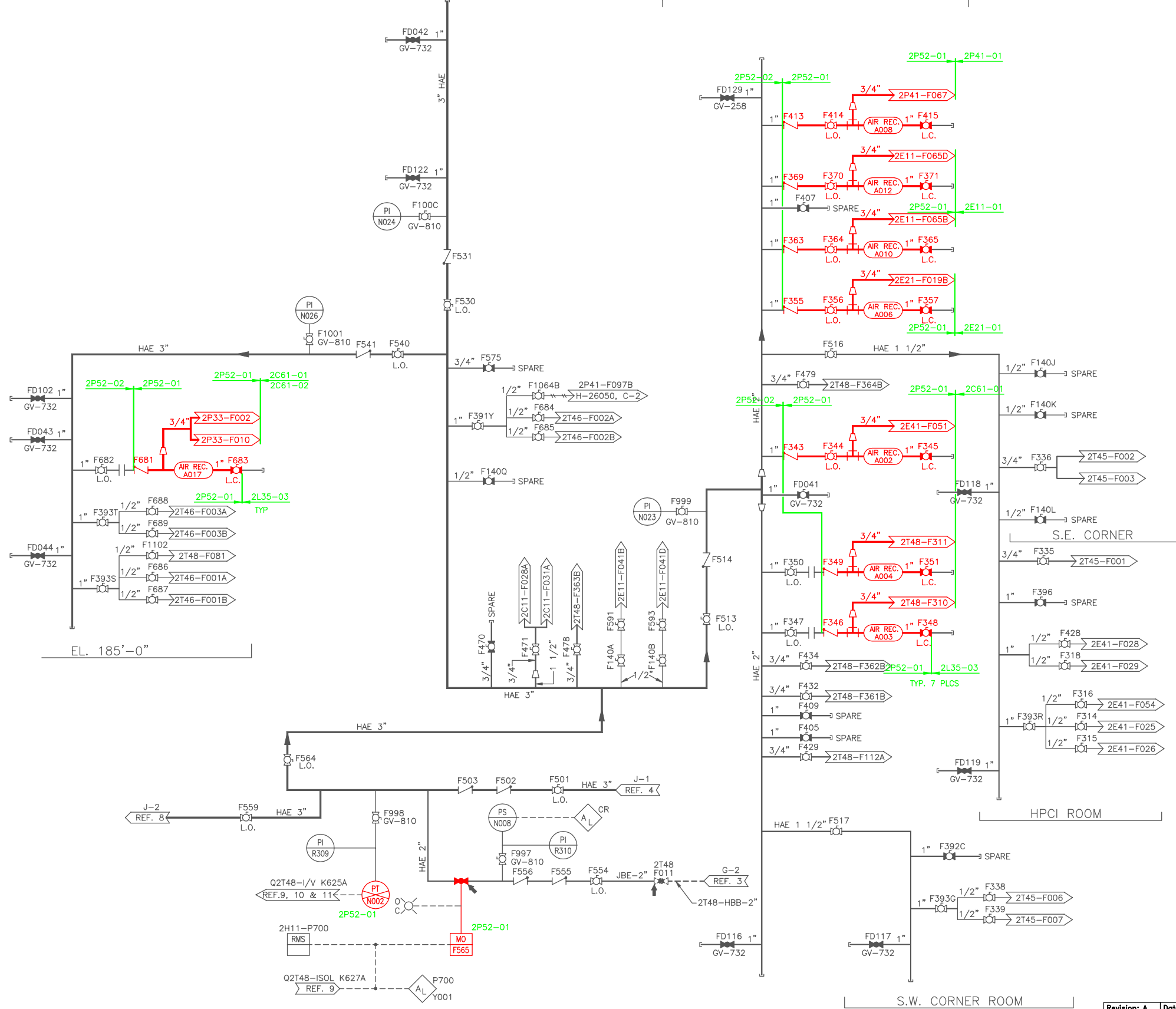


EL. 158'-0"

BELOW EL. 130'-0"



- NOTES:
- FOR NOTES AND REFERENCES SEE DWG. H-26060.
  - ALL PIPING ON THIS DWG. IS SEISMIC CLASS 1 NON-INTERRUPTABLE AIR.

BOUNDARY DIAGRAM NO.: 2P52-B01-01  
 FUNCTION(S) NO.: 2P52-01  
 PREPARED BY: WILLIAM P EVANS  
 DATE: 5/4/98  
 REVIEWED BY: M D STEPHENS  
 DATE: 5/5/98

LICENSE RENEWAL DOCUMENT

MPL NO. 2P52 ACAD14 HL26064



LICENSE RENEWAL SCREENING FOR INFORMATION ONLY

EDWIN I. HATCH NUCLEAR PLANT UNIT No.2 REACTOR BUILDING SOUTH SIDE NON-INTERRUPTABLE INST. P&ID SH.4

Revision: A Date: 1-4-2000  
 APPROVED, ISSUED PER LICENSE RENEWAL BOUNDARY PACKAGES. DRAWING CREATED FROM H-26064, REV.15; BY TRM.

DATE	BY	CHKD	APPR	LOCATION	DOCUMENT NUMBER	REVISION
	TRM	ED	ASK		10-502	HL-26064 A