

1. ALL EQUIPMENT & INSTRUMENT NUMBERS ARE TO BE PRECEDED BY MPL 2P33 UNLESS OTHERWISE NOTED. EXAMPLE: 2P33-P001A.
2. FOR INTERNAL DETAILS OF VENDOR-SUPPLIED PANELS 2P33-P001A & B SEE REFERENCE 1.
3. FOR INTERNAL DETAILS OF VENDOR-SUPPLIED PANELS 2P33-P601A & B SEE REFERENCE 6.
4. ROUTING OF THESE GAS SAMPLE LINES IS AS SHOWN ON REFERENCES 2, 3, 4, & 5.
5. *-FIELD SUPPLIED INSTRUMENTS AND VALVES.
6. ••••• DENOTES THAT THE PIPE OR TUBING IS ELECTRICALLY HEAT TRACED.
7. DIGITAL SIGNALS: "ANALYZER IN HIGH OR LOW RANGE", DRY CONTACT INPUT TO RECORDER, RECORDER TO SUPPLY 0-100 mv SOURCE.
8. FOR THE VALVES LISTED BELOW USE NV-15
2P33-F018A
2P33-F018B

REFERENCES:

REFERENCE	MPL. NO.	S.S. NO.
1. H ₂ O ₂ ANALYZER SYSTEM P&ID FOR PANEL NOS. P33-P001A & B	2P33-1010	H-26049
2. SAMPLE LINE ROUTINGS REACTOR BLDG. BELOW EL. 130'-0"		H-26392
3. SAMPLE LINE ROUTINGS REACTOR BLDG. EL. 130'-0" & RADWASTE BLDG. EL. 132'-4"		H-26394
4. SAMPLE LINE ROUTINGS REACTOR BLDG. EL. 158'-0" & RADWASTE BLDG. EL. 164'-0"		H-26396
5. SAMPLE LINE ROUTINGS REACTOR BLDG. EL. 185'-0"		H-26397
6. DELPHI INDUSTRIES REMOTE CONTROL PANEL LAYOUT DRAWING	2P33-P601A,B	S-41884
7. ARRANGEMENT & EQUIPMENT FOR LOCAL PANELS P33-P002A&B & MAIN CONTROL ROOM PANELS P33-P600A&B		H-16166
8. ARRANGEMENT & EQUIPMENT FOR LOCAL PANELS 2P33-P002A, B & MCR PANELS 2H11-P689 & 2H11-P690		H-26402
9. K-IV PANEL LAYOUT	2P33-P001A,B	S-41885
10. ANNUNCIATOR SIGNALS TO TSC I.E.D.	2X75-1010	H-26159
11. CLASS I.E. DIVISION 1 ANALOG SIGNAL CONVERSION/ISOLATION SYSTEM I.E.D.	2X75-1010	H-26285
12. CLASS I.E. DIVISION 2 ANALOG SIGNAL CONVERSION/ISOLATION SYSTEM I.E.D.	2X75-1010	H-26286
13. DIGITAL INPUT SIGNALS TO THE ERF COMPUTER SYSTEM SHT. 7 OF 15	2X75-1010	H-26176
14. DIGITAL INPUT SIGNAL TO THE ERF COMPUTER SYSTEM SHT. 15 OF 15	2X75-1010	H-26295
15. FISSION PRODUCTS MONITORING SYSTEM P&ID		H-26016

LICENSE RENEWAL DOCUMENT

MPL NO. 2P33-1010 ACAD14 HL26048



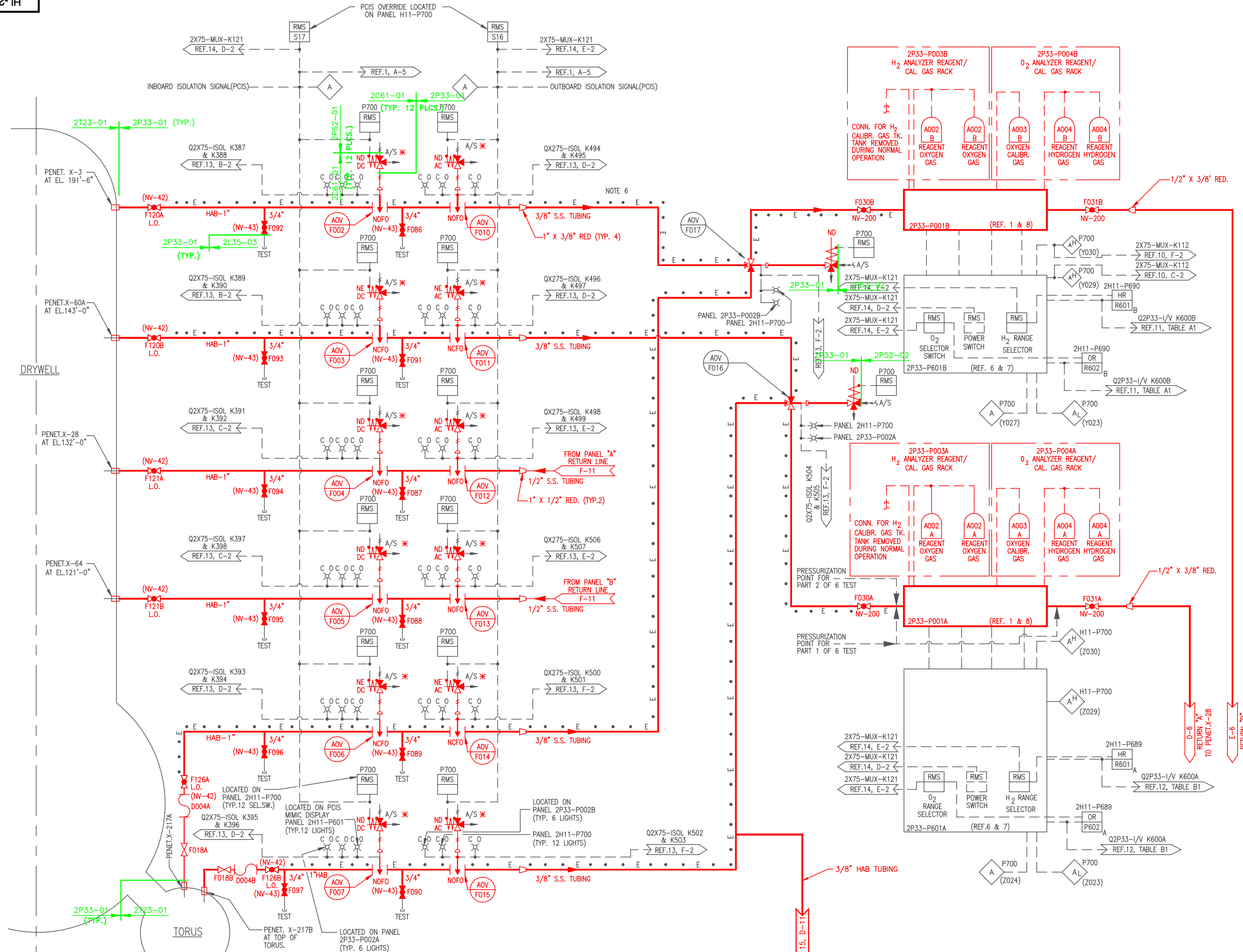
LICENSE RENEWAL SCREENING FOR INFORMATION ONLY

EDWIN I. HATCH NUCLEAR PLANT UNIT No.2 PRIMARY CONTAINMENT ATMOSPHERE H₂ & O₂ ANALYZER SYSTEM P. & I.D. SH. 1

Revision: A Date: 1-5-2000
APPROVED, ISSUED PER LICENSE RENEWAL BOUNDARY PACKAGES. DRAWING CREATED FROM H-26048, REV 12, BY ECB.

BY	CHKD	APPR	DATE	SCALE	LOCATION	DOCUMENT NUMBER	REVISION
ECB	ED	ASK		None	10-502	HL-26048	A

BOUNDARY DIAGRAM NO.: 2P33-B01-01
 FUNCTION(S) NO.: 2P33-01
 PREPARED BY: Alex Morrison
 DATE: 03/09/98
 REVIEWED BY: Ed Davidson
 DATE: 05/27/98



TORUS