

A
B
C
D
E
F
G
H
J

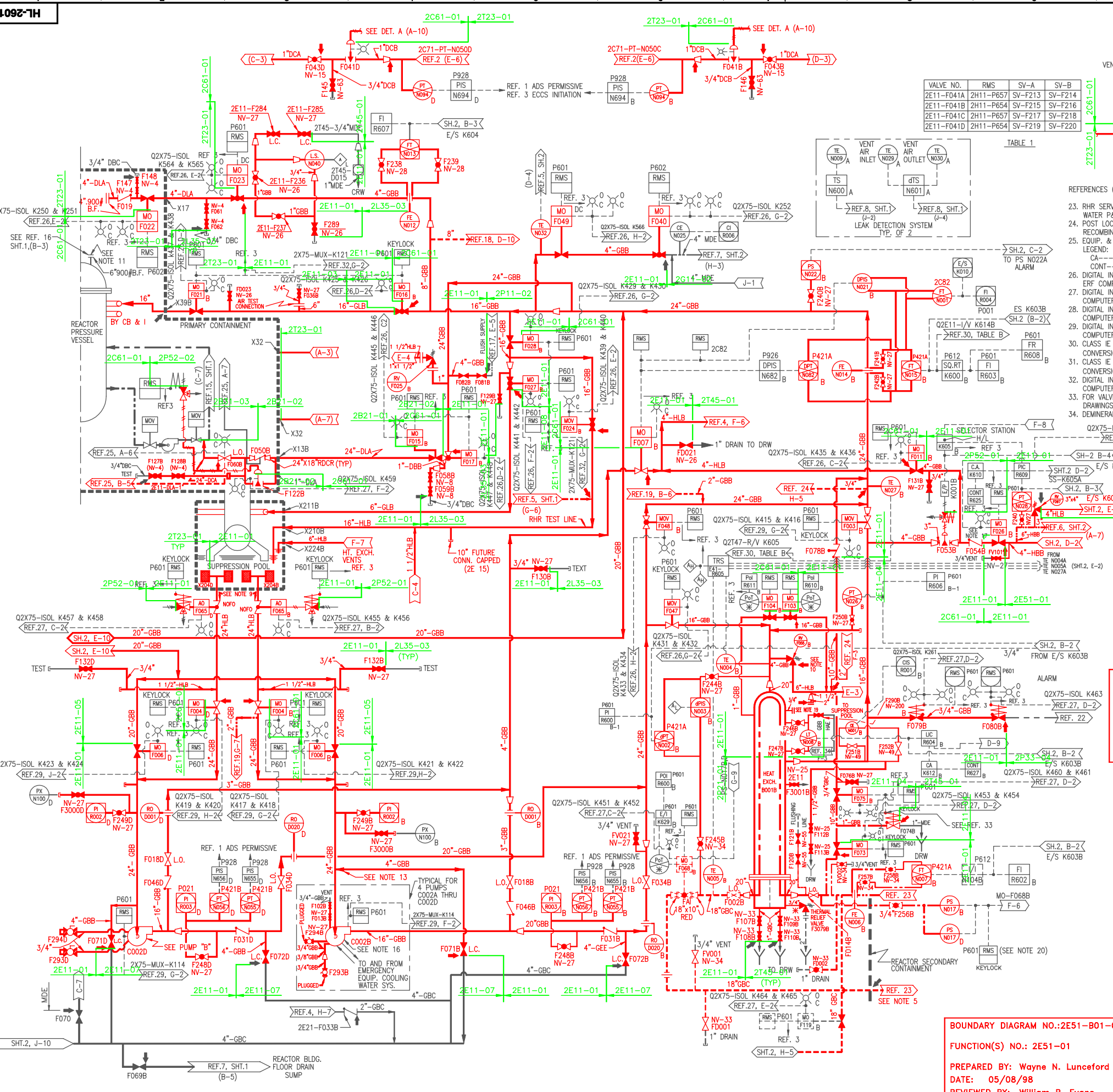
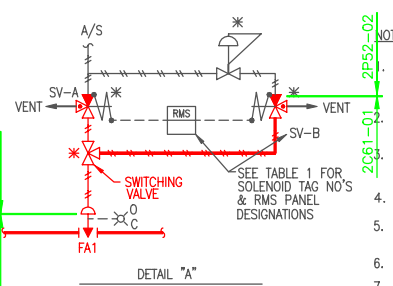


TABLE 1

VALVE NO.	RMS	SV-A	SV-B
2E11-F041A	2H11-P657	SV-F213	SV-F214
2E11-F041B	2H11-P654	SV-F215	SV-F216
2E11-F041C	2H11-P657	SV-F217	SV-F218
2E11-F041D	2H11-P654	SV-F219	SV-F220



REFERENCES (CONT.)

- RHR SERVICE WATER P&ID 2E11-1100 H-21039
- POST LOCA HYDROGEN RECOMBINER P&ID 2T49-1010 H-26068
- EQUIP. & VALVE DRAINAGE P&ID 2T45-1030 H-26077
- LEGEND:
 - CA---CONTROLL AMPLIFIER
 - CONT---CONTROLLER
 - DIGITAL INPUT SIGNALS TO THE ERF COMPUTER SYS. I.E.D. SHT. 3 OF 15 2X75-1010 H-26165
 - DIGITAL INPUT SIGNALS TO THE ERF COMPUTER SYS. I.E.D. SHT. 4 OF 15 2X75-1010 H-26166
 - DIGITAL INPUT SIGNALS TO THE ERF COMPUTER SYS. I.E.D. SHT. 5 OF 15 2X75-1010 H-26167
 - DIGITAL INPUT SIGNALS TO THE ERF COMPUTER SYS. I.E.D. SHT. 2 OF 15 2X75-1010 H-26164
 - CLASS IE ANALOG SIGNAL CONVERSION/ISOLATION SYS. I.E.D. 2X75-1010 H-26284
 - CLASS IE DIV. 1 ANALOG SIGNAL CONVERSION/ISOLATION SYS. I.E.D. 2X75-1010 H-26285
 - DIGITAL INPUT SIGNALS TO THE ERF COMPUTER SYS. I.E.D. SHT. 15 OF 15 2X75-1010 H-26295
 - FOR VALVE INTERLOCK REFERENCE SEE DRAWINGS H-27635 AND H-27653 2P21-1010 H-26047
- DEMINERALIZED WATER SYSTEM P&ID 2P21-1010 H-26047
- BREAKER IN CUBICLE 10A OF MCC 2R24-S012, RHR HEAT EXCHANGER TO ROIC VALVE, MOV 2E11-F026B, IS NORMALLY OPEN TO ENSURE THAT CIRCUITS E2E35C02 AND E2E35C04 ARE DEPOWERED DURING NORMAL OPERATIONS FOR APPENDIX "R" CONCERNS.
- BREAKER IN CUBICLE 09C OF MCC 2R24-S011, RHR HEAT EXCHANGER TO ROIC VALVE, MOV 2E11-F026A, IS NORMALLY OPEN TO ENSURE THAT CIRCUITS E2E35C01 AND E2E35C02 ARE DEPOWERED DURING NORMAL OPERATIONS FOR APPENDIX "R" CONCERNS.
- THERMAL RELIEF VALVES, 2E11-F3078A & B HAVE BEEN REMOVED AND REPLACED WITH BLIND FLANGES.
- PRESSURE SWITCHES PS-N017A & B CAN BE OVERRIDDEN PRIOR TO STARTING RHR/SW PUMP BY USING OVERRIDE SWITCH.

REFERENCE

REFERENCE	MPL NO.	MPL NO.
1. NUCLEAR BOILER SYSTEM FCD	2B21-1030	S25154
2. REACTOR PROTECTION SYSTEM P&ID	2C71-1010	H-28001
3. RESIDUAL HEAT REMOVAL FCD	2E11-1030	H-26020
4. CORE SPRAY P&ID	2E21-1010	H-26018
5. HPCI SYSTEM P&ID	SHT 1 2E41-1010	H-26020
	SHT 2 2E51-1010	H-26023
	SHT 2 2E41-1010	H-26024
6. ROIC SYSTEM P&ID	SHT 1 2G11-1010	H-26026
	SHT 1 2G31-1010	H-26036
	SHT 2 2G31-1010	H-26037
	SHT 2 2A61-4040	S25280
7. RADWASTE SYSTEM P&ID	SHT 1-7 2G11-1010	H-26032
8. REACTOR WATER CLEANUP SYS P&ID	SHT 1 2G31-1010	H-26036
	SHT 2 2G31-1010	H-26037
9. NUCLEAR BOILER LEAK DETECTION SYSTEM DESIGN SPEC.	SHT 1 2E41-1010	H-26020
	SHT 2 2E51-1010	H-26023
	SHT 2 2E41-1010	H-26024
10. PIPING AND INSTRUMENT SYMBOLS INSTALLATION SPECIFICATIONS	A42-1010	S15051
11. PROCESS INSTRUMENTATION & TUBING	2A61-4070	S25323
12. RHR PROCESS DATA	2E11-1020	S25140
13. PLANT REQUIREMENTS	2A61-4020	S25706
14. FURN., FAB., DEL., ERECT. PIPING & PIPE SUPPORTS & SETTING OF MECH. EQUIP.	SS-2109-1	
15. REACTOR RECIRC SYS P&ID	SHT 1 2B31-1010	H-26003
	SHT 2 2B1-1010	H-26004
	SHT 1 2B21-1010	H-26000
	SHT 2 2B1-1010	H-26001
16. NUCLEAR BOILER SYS P&ID	SHT 1 2P11-1010	H-26046
	SHT 2 2P11-1010	H-26049
17. REACTOR & RADWASTE BLDGS. CONDENSATE STORAGE & TRANSFER SYSTEM P&ID	2G41-1010	H-26039
18. FUEL POOL COOLING SYSTEM P&ID	2E21-1050	H-26019
19. JOCKEY PUMP SYS. P&ID & P.F.D. FOR THE R.H.R. & C.S. SYS.	(TABLE 1) SS-2102-5	
20. MECH. PENETS. DRYWELL	(TABLE 3) SS-2102-5	
21. MECH. & ELECT. PENETS. SUPPRESSION CHAMBER	2P33-2010	H-26038
22. PROCESS SAMPLING SYS. P&ID & PFD.		

BOUNDARY DIAGRAM NO.: 2E11-B01-01
 FUNCTION(S) NO.: 2E11-01, 03, 04, 05, 08, C61-01, T23-01
 PREPARED BY: Willie J. Jennings
 DATE: 02/02/98
 REVIEWED BY: William P. Evans
 DATE: 05/05/98

BOUNDARY DIAGRAM NO.: 2B21-B02-08
 FUNCTION(S) NO.: 2B1-02, C61-01, T23-01
 PREPARED BY: Willie Jennings
 DATE: 04/24/98
 REVIEWED BY: William P. Evans
 DATE: 05/28/98

BOUNDARY DIAGRAM NO.: 2E51-B01-06
 FUNCTION(S) NO.: 2E51-01
 PREPARED BY: Wayne N. Luncford
 DATE: 05/08/98
 REVIEWED BY: William P. Evans
 DATE: 05/8/98

Revision: A Date: 11-16-99
 APPROVED, ISSUED PER LICENSE DRAWING BOUNDARY PACKAGES. DRAWING CREATED FROM H-26014, REV 43; BY TRM.

LICENSE RENEWAL DOCUMENT

MPL NO. 2E11-1010 ACAD14 HL26014

SOUTHERN COMPANY

LICENSE RENEWAL SCREENING FOR INFORMATION ONLY

EDWIN I. HATCH NUCLEAR PLANT UNIT No. 2
 R.H.R. SYSTEM
 P&ID SHEET 1

DATE	SCALE	10-502	HL-26014	A
DRWN	BKN	DESIGNED	LCF	LOCATION
DATE	None	SCALE	None	DOCUMENT NUMBER
				REVISION