

TABLE 4 (FOR TYP DETAIL B)

(A)	(B)	(C)	(D)	(E)	(F)	(G)	(H)	(J)	(K)	(L)
N127A	B-5	N697A	P927	N697G	P927	N697L	P927	F013A	F013B	F013L
N127B	C-13	N697B	P928	N697K	P928	N697H	P928	F013K	F013G	F013H
N127C	F-2	N697C	P927	N697F	P927	N697E	P927	F013C	F013F	F013E
N127D	F-12	N697D	P928	N697M	P928	N697J	P928	F013M	F013D	F013M

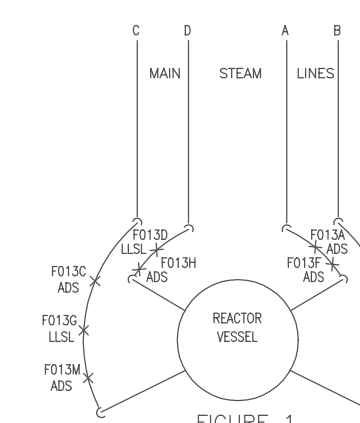
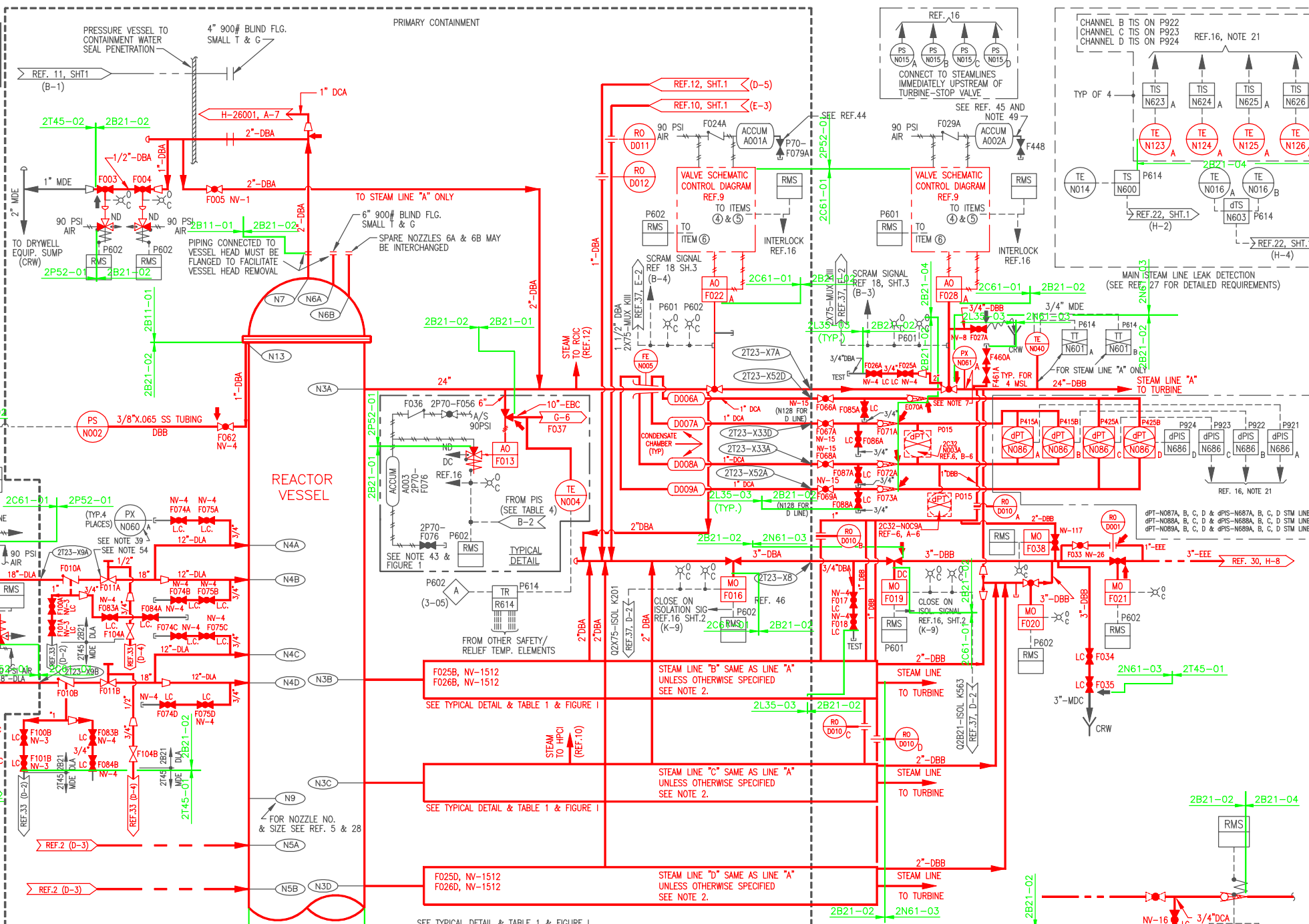
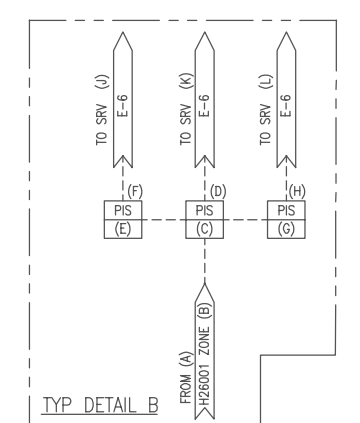


TABLE I
SAFETY/RELIEF VALVE SUFFIX ASSIGNMENT AND ASSOCIATED EQUIPMENT

SAFETY/RELIEF VALVE	F013	A	B	C	D	E	F	G	H	K	L	M
ADS/LLSL FUNCTION	ADS	LLSL	ADS	LLSL	ADS	LLSL	LLSL	ADS	ADS	ADS	ADS	ADS
CONTROL PROVIDED IN REMOTE SHUTDOWN SYSTEM (REF.31)	NO	YES	NO	NO	NO	YES	NO	NO	NO	NO	NO	NO
VACUUM BREAKER	F110	-	B	-	D	-	F	G	-	-	-	-
COMPUTER INPUT NO. FOR PRESSURE SWITCH N301	C1580	C1581	C1582	C1583	C1584	C1585	C1586	C1587	C1588	C1589	C1590	

TABLE III

STEAM LOOP	ISOLATION VALVE	EFCV
A	F066A	F070A
A	F067A	F071A
A	F068A	F072A
A	F069A	F073A
B	F066B	F070B
B	F067B	F071B
B	F068B	F072B
B	F069B	F073B
C	F066C	F070C
C	F067C	F071C
C	F068C	F072C
C	F069C	F073C
D	F066D	F070D
D	F067D	F071D
D	F068D	F072D
D	F069D	F073D

WORK THIS DWG WITH H-26001 & H-26189

- REFERENCES
- CONTROL ROD DRIVE HYDRAULIC SYS P&ID SHT 1 2C11-1010 H-26006
 - CORE SPRAY SYSTEM P&ID SHT 2 2E21-1010 H-26018
 - REACTOR RECIRCULATION SYS P&ID SHT 1 2B31-1010 H-26003
 - PIPING & INSTRUMENT SYMBOLS A42-1010 H-26004
 - REACTOR VESSEL PURCHASE PART DWG. 2B11-A001 S-25020-25
 - FEEDWATER CONTROL SYSTEM IED 2C32-1010 H-26991
 - NEUTRON MONITORING SYS IED 2C41-1010 H-26009
 - STANDBY LIQUID CONTROL SYS P&ID 2B21-F022 S-25012
 - ISOLATION VALVE PURCH PART DWG 2B21-F028
 - HPICI SYSTEM P&ID SHT 1 2E41-1010 H-26020
 - RHR SYSTEM P&ID SHT 2 2E11-1010 H-26014
 - ROIC SYSTEM P&ID SHT 2 2E51-1010 H-26015
 - HPICI SYSTEM FCD 2E41-1030 H-24742-49
 - RHR SYSTEM FCD SHT 1-2 2E11-1030 S-26095-96
 - ROIC SYSTEM FCD SHT 1-4 2E51-1030 S-26100, 1-2 & 3
 - NUCLEAR BOILER SYSTEMS FCD 2B21-1030 S-25154
 - CORE SPRAY SYSTEM FCD 2E21-1030 S-26097
 - REACTOR PROTECTION SYSTEM IED 2C71-1010 H-24728
 - INSTALL INSTRUMENT PIPING & TUBING 2A61-4070 S-25323
 - PLANT REQUIREMENTS 2A61-4020 S-25706
 - REACTOR RECIRCULATION SYSTEM FCD 2B31-1020 H-26036
 - REACTOR WATER CLEANUP SYSTEM P&ID SHT 1 2G31-1010 H-26037
 - SYSTEM P&ID SHT 2 2G31-1010 H-26036
 - PRESSURE INTEGRITY OF PIPING & EQUIPMENT PRESSURE PARTS 2A61-4030 S-25112
 - NUCLEAR BOILER SYSTEM PROCESS DIAG 2B21-1020 S-25068
 - NUCLEAR BOILER SYSTEM DESIGN SPEC 2B21-4020 S-25213
 - FEEDWATER CONTROL SYSTEM DESIGN SPEC 2C32-4010 S-25321
 - NUCLEAR BOILER LEAK DETECTION DESIGN SPEC. 2A61-4040 S-25280
 - REACTOR SYSTEM OUTLINE 2A61-2050 S-25045
 - CNDS & F.W. SYSTEM 2N21-1010 H-21038
 - TURBINE BLDG. MAIN AND RFP TURBINE DRAINS P&ID 2N22-1010 H-21031
 - REMOTE SHUTDOWN SYS. IED SHT 1-5 2C82-1010 S-28846-50
 - DELETED
 - EQUIP. & VALVE DRAINAGE P&ID 2T45-1030 H-26077
 - CLASS IIE ANALOG SIGNAL CONVERSION/ISOLATION SYS. IED 2X75-1010 H-26284
 - DATA ACQUISITION CHART, ERF ANALOG SIGNALS-GIT SIGNAL CONDITIONING SH 1 2X75-P601 S-41961
 - DATA ACQUISITION CHART, ERF ANALOG SIGNALS-GIT SIGNAL CONDITIONING SH 6 2X75-P601 S-41966
 - DIGITAL INPUT SIGNALS TO THE ERF COMPUTER SYS. IED SH 1 2X75-1010 H-26163
 - OF 15
 - NUCLEAR BOILER SYS. P&ID SH 2 2B21-1010 H-26001
 - NUCLEAR BOILER SYS. P&ID SH 3 2B21-1010 H-26189
 - POST ACCIDENT REACTOR COOLANT AND CONTAINMENT ATMOSPHERE SAMPLING SYSTEM P&ID 2P33-1010 H-26384
 - REACTOR ASSEMBLY SHT. 1 2B11-2010 S-28220-25
 - SECT. 1-3, SHT. 2 SECT. 1-3 2X75-1010 H-26285
 - CLASS IIE DIVISION 1 SIGNAL CONVERSION/ISOLATION SYSTEM IED 2X75-1010 H-26286
 - CLASS IIE DIVISION 2 ANALOG SIGNAL CONVERSION/ISOLATION SYSTEM IED 2X75-1010 H-26286
 - DRYWELL PNEUMATIC SYS. IED H-28023
 - REACTOR BLDG NORTH SIDE NON-INTERRUPTABLE INSTRUMENT AIR H-26070
 - PENETRATION X-8 22" NOM. DIA CLAMSHHELL BELLOW - DETAIL S-43984

BOUNDARY DIAGRAM NO.: 2B11-B01-01
 FUNCTION(S) NO.: 2B11-01
 PREPARED BY: William P. Evans
 DATE: 07/01/98
 REVIEWED BY: Willie Jennings
 DATE: 07/07/98

BOUNDARY DIAGRAM NO.: 2B21-B02-01
 FUNCTION(S) NO.: 2B21-01, 02, 04, C61-01
 PREPARED BY: Willie Jennings
 DATE: 04/23/98
 REVIEWED BY: William P. Evans
 DATE: 07/09/98

BOUNDARY DIAGRAM NO.: 2E51-B01-03
 FUNCTION(S) NO.: 2E51-01
 PREPARED BY: Wayne Luceford
 DATE: 05/08/98
 REVIEWED BY: William P. Evans
 DATE: 05/08/98

BOUNDARY DIAGRAM NO.: 2E41-B01-03
 FUNCTION(S) NO.: 2E41-01
 PREPARED BY: Wayne Luceford
 DATE: 05/08/98
 REVIEWED BY: William P. Evans
 DATE: 05/08/98

BOUNDARY DIAGRAM NO.: 2N61-B01-01
 FUNCTION(S) NO.: 2N61-03
 PREPARED BY: Alex Morrison
 DATE: 03/18/98
 REVIEWED BY: Willie Jennings
 DATE: 03/19/98

Revision: A Date: 12-30-99
 APPROVED, ISSUED PER LICENSE RENEWAL BOUNDARY PACKAGES. DRAWING CREATED FROM H-26000, REV 36; BY BKN.

MPL NO. 2B21-1010 ACAD14 HL26000

SOUTHERN COMPANY

LICENSE RENEWAL SCREENING FOR INFORMATION ONLY

EDWIN I. HATCH NUCLEAR PLANT No.2
 NUCLEAR BOILER SYSTEM P&ID
 SHEET 1

DATE	BY	SCALE	LOCATION	DOCUMENT NUMBER	REVISION
	BKN	None	10-502	HL-26000	A