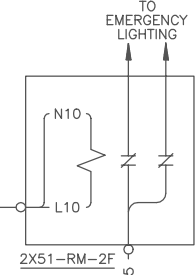
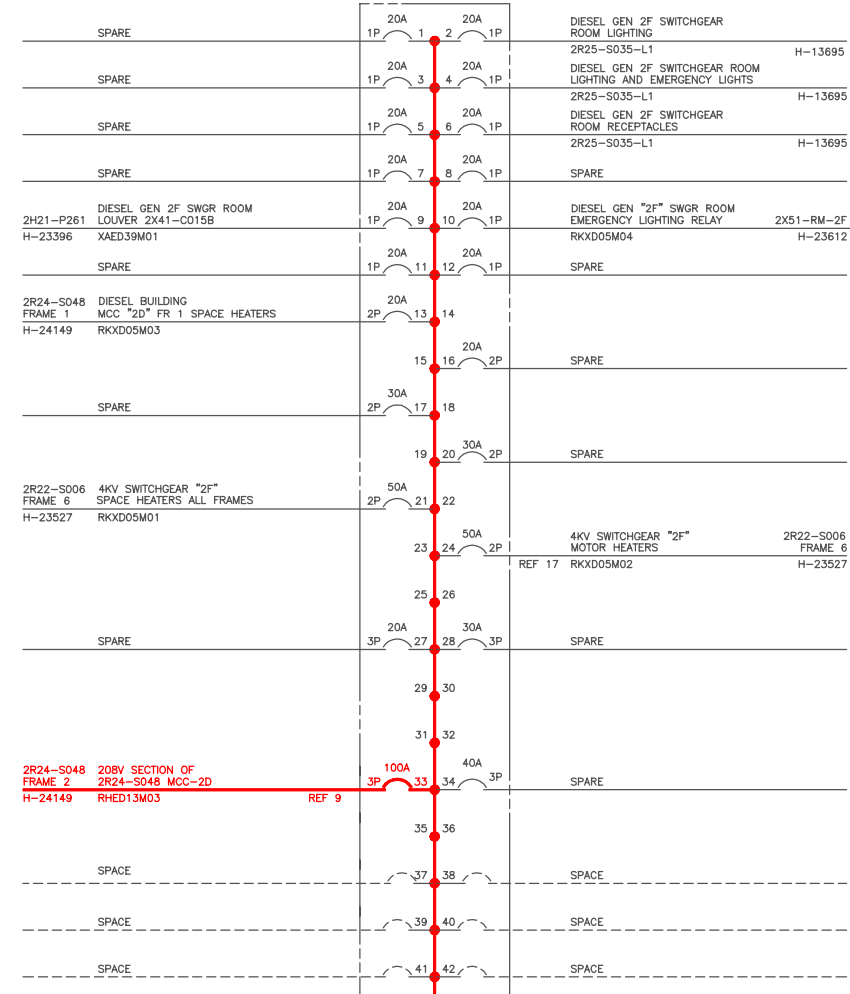


**LEGEND**

DESTINATION MPL NO.	BREAKER FUNCTION	WIRE NO. (DC ONLY)	NO. OF POLES	BREAKER CONTINUOUS RATING	BREAKER NO.
R22-S001	DIV. 1 CONDENSER FLOOD LOGIC		P1	20A	1
H-13473	R25-S001-ES7-M01		2P		

DESTINATION WIRING DIAGRAM  
 CABLE NO.  
 ELEMENTARY REFERENCE #

- ALL BREAKERS OR SPACES IN THE PANEL WILL BE ACCOUNTED FOR.  
 - BREAKERS WITH NO CABLES CONNECTED TO THEM WILL BE IDENTIFIED AS "SPARE".  
 - SPACES WITH NO BREAKER WILL BE IDENTIFIED WITH A DASHED LINE TO SIGNIFY AVAILABILITY FOR FUTURE USE AND IDENTIFIED AS "SPACE".  
 - EACH BREAKER SHOULD BE NUMBERED AND LOCATED ON THE VERTICAL BUS BASED ON THE NUMBER OF THE POLE POSITION ITS OPERATING LEVER OCCUPIES (FOR 3 POLES THE LEVER IS ON THE MIDDLE POLE. FOR 2 POLES IT IS THE TOP POLE WHEN INSTALLED ON LEFT SIDE AND BOTTOM POLE WHEN INSTALLED ON THE RIGHT SIDE). POLE POSITION NUMBERS ARE KNOWN BY COUNTING EACH POLE LEFT TO RIGHT, TOP TO BOTTOM.



H-23371 125V DC DISTRIBUTION CABINET 2E (2R25-S005)

120/208V DISTRIBUTION CABINET "2K"  
 DIESEL BUILDING (SWITCHGEAR ROOM 2F)  
 (2R25-S035)  
**SCHEME-2R20N-05**  
 (SEE NOTE 1)

**BOUNDARY DIAGRAM NO.: 2R20-B01-13**  
**FUNCTION(S) NO.: 2R20-01**  
**PREPARED BY: MARK CRISLER**  
**DATE: 4/6/98**  
**REVIEWED BY: RENEW RITCHEY**  
**DATE: 4/28/98**

**NOTES:**  
 1. CABLES MARKED THUS \* ARE SOURCED AGAINST THIS PLAN. OTHER CABLES ARE SOURCED TO SYSTEMS AS IDENTIFIED.

**REFERENCES:**  
 FOR REFERENCE DWG LIST SEE DWG H-23647 SH 1

**LICENSE RENEWAL DOCUMENT**

MPL NO. 2R25 ACAD14 HL2364702



**LICENSE RENEWAL SCREENING FOR INFORMATION ONLY**

EDWIN I. HATCH NUCLEAR PLANT UNIT No.2  
 SINGLE LINE DIAGRAM-120/208V DIESEL BUILDING  
 EMERGENCY STATION SERVICE SYSTEM 2R20N  
 MPL 2R25-S035

Revision: A Date: 11-17-99  
 APPROVED, ISSUED PER LICENSE RENEWAL BOUNDARY PACKAGES. DRAWING CREATED FROM H-23647 SH.2, REV.2; BY TRM.

BY	CHKD.	APPR.	DATE	DESIGNED	LOCATION	DOCUMENT NUMBER	REVISION
TRM	GMC	ASK		None	10-502	HL-23647 SH. 2 OF 2	A