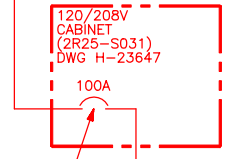
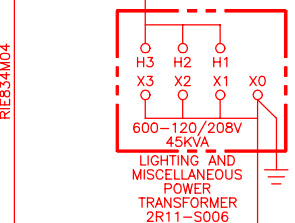
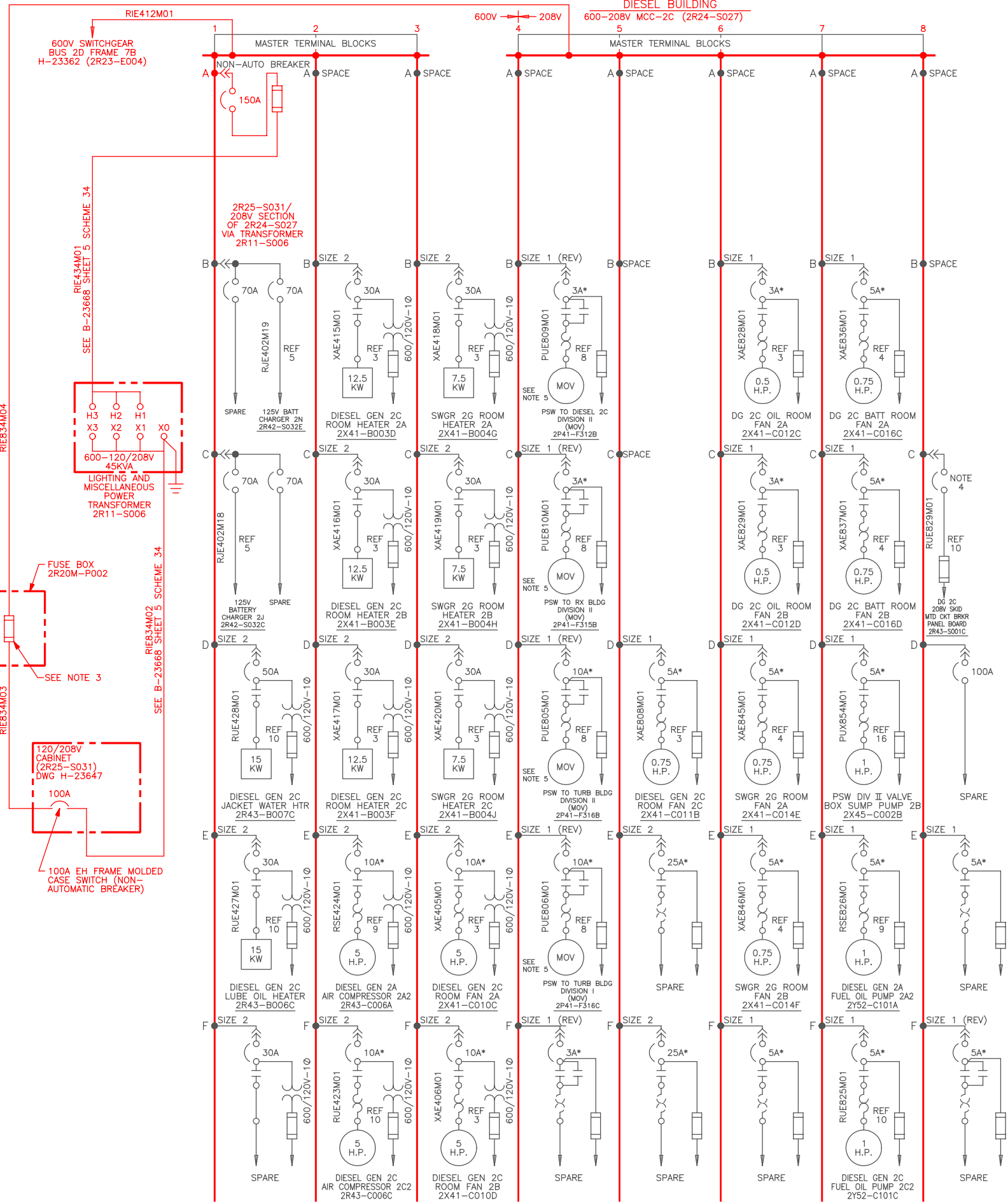


J
H
G
F
E
D
C
B
A



BOUNDARY DIAGRAM NO.: 2R20-B01-09
FUNCTION(S) NO.: 2R20-01
 PREPARED BY: Mark Crisler
 DATE: 04-06-98
 REVIEWED BY: Renee Ritchey
 DATE: 04-20-98

- NOTES:**
1. DELETED
 - 2.* CONTINUOUS CURRENT RATING OF A MAGNETIC ONLY CIRCUIT BREAKER WITH AN ADJUSTABLE INSTANTANEOUS CURRENT TRIP SETTING.
 3. REFER TO THE MASTER FUSE LIST FOR FUSE DESIGN INFORMATION.
 4. MOLDED CASE SWITCH (WITH INST. TRIP)
 5. SEE MCC DATA SHEET B-23025 FOR MOTOR DATA.

- REFERENCES:**
1. B-23014 FRONT VIEW DIESEL BUILDING 600/208V MCC-2C CLASS 1E 2R24-S027
 2. B-23025 MOTOR CONTROL CENTER EQUIPMENT LIST DIESEL BUILDING 600/208V MCC-2C CLASS 1E 2R24-S027
 3. H-23395 ELEMENTARY DIAGRAM DIESEL GENERATORS 2A,2B AND 2C HEATING AND VENTILATION SYSTEM X41A SHEET 1 OF 2
 4. H-23397 ELEMENTARY DIAGRAM DIESEL GENERATORS 2A,2B AND 2C HEATING AND VENTILATION SYSTEM X41A SHEET 2 OF 2
 5. H-23611 WIRING DIAGRAM DIESEL BUILDING METERING PANELS AND CHARGERS
 6. H-23621 WIRING DIAGRAM DIESEL GENERATOR 2C PANEL (2R43-S001C)
 7. H-23668 ELEMENTARY DIAGRAM EMERGENCY STATION SERVICE SYSTEM 2R20M SHEET 1 OF 3
 8. H-23695 ELEMENTARY DIAGRAM PLANT SERVICE WATER MO VALVES SYSTEM 2P41 SHEET 1 OF 3
 9. H-23807 ELEMENTARY DIAGRAM 2R43A DIESEL GENERATOR 2A SHEET 7 OF 7
 10. H-23817 ELEMENTARY DIAGRAM 2R43C DIESEL GENERATOR 2C SHEET 7 OF 7
 11. SX-23659 DIESEL BUILDING 600/208V ESSENTIAL MCC-2C SHEET 1
 12. SX-23660 DIESEL BUILDING 600/208V ESSENTIAL MCC-2C SHEET 2
 13. H-24146 WIRING DIAGRAM DIESEL BUILDING 600/208V MCC-2C 2R24-S027 FRAMES 1,2 AND 3 SHEET 1 OF 3
 14. H-24147 WIRING DIAGRAM DIESEL BUILDING 600/208V MCC-2C 2R24-S027 FRAMES 4,5 AND 6 SHEET 2 OF 3
 15. H-24148 WIRING DIAGRAM DIESEL BUILDING 600/208V MCC-2C 2R24-S027 FRAMES 7 AND 8 SHEET 3 OF 3
 16. H-23696 ELEMENTARY DIAGRAM PLANT SERVICE WATER MO VALVES SYSTEM 2P41 SHEET 2 OF 3
 17. A-20121 LOAD LIST MCC 2C,2R24-S027

Revision: A Date: 11-12-99
 APPROVED, ISSUED PER LICENSE RENEWAL BOUNDARY PACKAGES. DRAWING CREATED FROM H-23317, REV. 24; BY BKN.

LICENSE RENEWAL DOCUMENT
 MPL NO. 2R24 ACAD14 HL23317

SOUTHERN COMPANY
LICENSE RENEWAL SCREENING FOR INFORMATION ONLY

EDWIN I. HATCH NUCLEAR PLANT UNIT No.2
 600/208V ESSENTIAL MCC 2C
 MPL NO 2R24-S027

BY	CHK'D	APPR'D	LOCATION	DOCUMENT NUMBER	REVISION
BKN	GMC	ASK		10-502	HL-23317
				No Scale	A