

- NOTES:**
- FOR FIELD MODIFICATIONS TO MCC REFER TO WIRING DIAGRAMS.
 - * CONTINUOUS CURRENT RATING OF A MAGNETIC ONLY CIRCUIT BREAKER WITH AN ADJUSTABLE INSTANTANEOUS TRIP RANGE.
 - REFER TO THE MASTER FUSE LIST FOR FUSE DESIGN INFORMATION.
 - MOLDED CASE SWITCH (WITH INST. TRIP)
 - SEE MCC DATA SHEET B-23024 FOR MOTOR DATA.

- REFERENCES:**
- B-23012 FRONT VIEW MCC 2R24-S025
 - B-23024 EQUIPMENT LIST MCC 2R24-S025 SH.1,2&3
 - H-24143 WIRING DIAGRAMS MCC 2R24-S025 H-24145
 - H-23611 125V BATTERY CHARGER EQUIPMENT
 - H-23695-ELEMENTARY DIAGRAMS FOR PLANT SERVICE WATER MOV'S SYSTEM 2P41 H-23696
 - B-23668 BLOCK DIAGRAM EMERGENCY STATION SERVICE 600V SYSTEM 2R20M SHEET 5
 - H-23817 ELEMENTARY DIAGRAM DIESEL GENERATOR 2C SYSTEM 2R43C SHEET 7
 - H-23395& H-23397 ELEMENTARY DIAGRAM DIESEL GENERATOR 2A,2B AND 2C HEATING AND VENTILATION SYSTEM X41A
 - H-23371 SINGLE LINE DIAGRAM 125V DC EMERGENCY STATION SERVICE SYSTEM 2R42B AND 2R43B SHEET 1
 - H-23807 ELEMENTARY DIAGRAM DIESEL GENERATOR 2A SYSTEM 2R43A SHEET 7
 - A-20120 LOAD LIST FOR 2R24-S025
 - H-23406 ELEMENTARY DIAGRAM INVERTER AND CHARGER ALARM SYSTEM 2R20P,2R42A,B AND E

BOUNDARY DIAGRAM NO.:2R20-B01-07
FUNCTION(S) NO.: 2R20-01
PREPARED BY: Mark Crisler
DATE: 04-06-98
REVIEWED BY: Renee Ritchey
DATE: 04-28-98

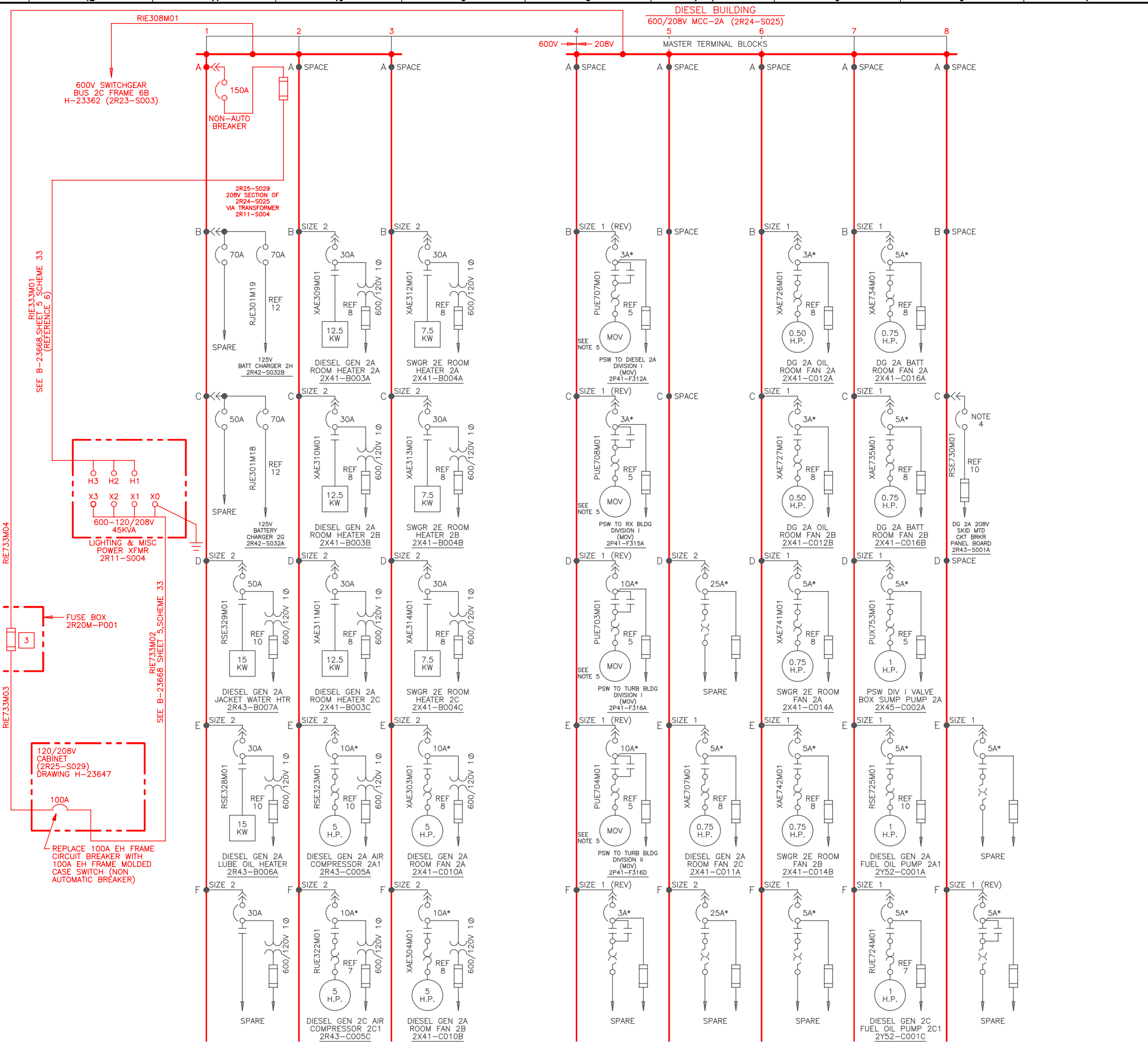
LICENSE RENEWAL DOCUMENT
MPL NO. R24 ACAD14 HL23315

SOUTHERN COMPANY
LICENSE RENEWAL SCREENING FOR INFORMATION ONLY

EDWIN I. HATCH NUCLEAR PLANT UNIT No. 2
SINGLE LINE DIAGRAM - DIESEL BUILDING
600/208V ESSENTIAL MCC-2A
MPL 2R24-S025

Revision: A Date: 11-12-99
APPROVED, ISSUED PER LICENSE RENEWAL DOCUMENT PACKAGES.
DRAWING CREATED FROM H-23315, REV. 22; BY BKN.

BY	CHK'D	APPR'D	LOCATION	DOCUMENT NUMBER	REVISION
BKN	LCF				
BKN	GMC	ASK			



600V SWITCHGEAR BUS 2C FRAME 6B H-23362 (2R23-S003)

RIE333M01 SEE B-23668 SHEET 5, SCHEME 33 (REFERENCE 6)

RIE733M04 SEE B-23668 SHEET 5, SCHEME 33

RIE733M03 SEE B-23668 SHEET 5, SCHEME 33

120/208V CABINET (2R25-S029) DRAWING H-23647

REPLACE 100A EH FRAME CIRCUIT BREAKER WITH 100A EH FRAME MOLDED CASE SWITCH (NON AUTOMATIC BREAKER)

150A NON-AUTO BREAKER

2R25-S029 208V SECTION OF 2R24-S025 VIA TRANSFORMER 2R11-S004

FUSE BOX 2R20M-P001