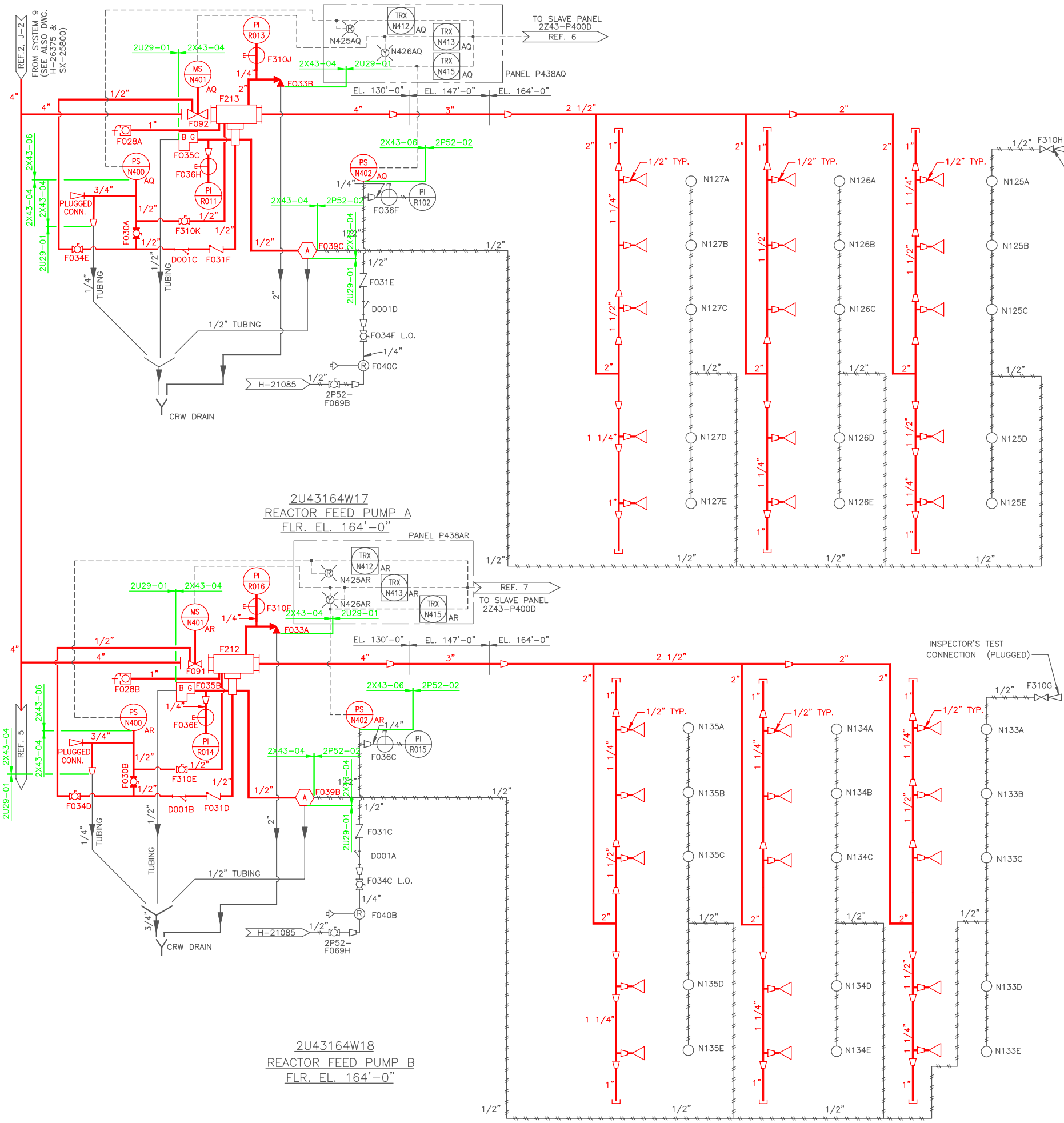


A
B
C
D
E
F
G
H
J



NOTES

1. ALL EQUIPMENT & INSTRUMENTS ARE PREFIXED WITH 2U43 UNLESS OTHERWISE NOTED.

BOUNDARY DIAGRAM NO.: 2X43-B01-04

FUNCTION(S) NO.: 2X43-04
2X43-06

PREPARED BY: M D STEPHENS
DATE: 2/6/98
REVIEWED BY: ALEX MORRISON
DATE: 7/13/98

BOUNDARY DIAGRAM NO.: 2X43-B06-06

FUNCTION(S) NO.: 2X43-06

PREPARED BY: M D STEPHENS
DATE: 3/19/98
REVIEWED BY: ALEX MORRISON
DATE: 7/15/98

- LEGEND**
- BALL DRIP VALVE
 - MULTIMATIC VALVE
 - BREAK GLASS STATION
 - PILOT HEAD
 - 1/2" SPRINKLER HEAD
 - DRY PILOT ACTUATOR
 - REGULATOR
 - MONITOR SWITCH
 - MULTIPORT GAUGE TEST VALVE
 - ADDRESSABLE INTERFACE MODULE

REFERENCES

TITLE	MPL. NO.	DWG. NO.
1. TURBINE BUILDING FIRE PROTECTION SYSTEM P&ID	2U43-1010	H-21016
2. TURBINE BUILDING FIRE PROTECTION SYSTEM P&ID SHT. 4 OF 5	2U43-1010	H-21201
3. TURBINE BLDG. R.F.P.T. A & B AREA EL. 164'	SX-25800	
4. FIRE PROTECTION - PIPING OIL CONDITIONER AREA	H-26375	
5. RADWASTE BLDG. TRASH COMPACTOR & DRUM STORAGE AREA SPRINKLER SYS. P&ID.	H-26372	
6. FIRE PROTECTION FCD 2U43164W17	B-24657	
7. FIRE PROTECTION FCD 2U43164W18	B-24658	

LICENSE RENEWAL DOCUMENT

MPL NO. 2U43-1010 ACAD14 HL21202

SOUTHERN COMPANY

LICENSE RENEWAL SCREENING FOR INFORMATION ONLY

EDWIN I. HATCH NUCLEAR PLANT UNIT No. 2
TURBINE BUILDING
FIRE PROTECTION SYSTEM P&ID SHT. 5 OF 5

DRWN	DESIGN	LOCATION	DOCUMENT NUMBER	REVISION
TRM	LCF		10-502	HL-21202
DATE	SCALE			A
	None			

Revision: A Date: 12-03-99
APPROVED, ISSUED PER LICENSE RENEWAL BOUNDARY PACKAGES. DRAWING CREATED FROM H-21202, REV.8; BY TRM.

BY	CHK'D	APP'R
TRM	MDS	ASK