

NOTES
 1. ALL EQUIPMENT & INSTRUMENTS ARE PREFIXED WITH 2U43 UNLESS OTHERWISE NOTED.

- LEGEND**
- ADDRESSABLE INTERFACE MODULE
 - 1/2" SPRINKLER HEAD
 - BALL DRIP VALVE
 - BREAK GLASS STATION
 - PILOT HEAD
 - SPRAY NOZZLE
 - DRY PILOT ACTUATOR
 - REGULATOR
 - FLOODING VALVE
 - MULTIPORT GAUGE TEST VALVE
 - MONITOR SWITCH

REFERENCE:

TITLE	MPL. NO.	DWG. NO.
1. FIRE PROT PIPING H2 SEAL OIL UNIT		H-26374
2. FIRE PROTECTION PIPING RFPT OIL COND. AREA		H-26375
3. TURBINE BUILDING FIRE PROTECTION SYSTEM P&ID	2U43-1010	H-21016
4. TURBINE BUILDING FIRE PROTECTION SYSTEM P&ID SHT. 3 OF 5	2U43-1010	H-21200
5. TURBINE BUILDING FIRE PROTECTION SYSTEM P&ID SHT. 5 OF 5	2U43-1010	H-21202
6. PUMPHOUSE FIRE PROTECTION P&ID SHT 1 OF 3		H-11033
7. FIRE PROTECTION	FCD	2U43130W03-B-24635
8. FIRE PROTECTION	FCD	2U43130W06-B-24636
9. FIRE PROTECTION	FCD	2U43130W08-B-24713

BOUNDARY DIAGRAM NO.: 2X43-B06-05
 FUNCTION(S) NO.: 2X43-06
 PREPARED BY: M D STEPHENS
 DATE: 3/19/98
 REVIEWED BY: ALEX MORRISON
 DATE: 7/15/98

BOUNDARY DIAGRAM NO.: 2X43-B01-03
 FUNCTION(S) NO.: 2X43-04
 2X43-06
 PREPARED BY: M D STEPHENS
 DATE: 2/6/98
 REVIEWED BY: ALEX MORRISON
 DATE: 7/13/98

LICENSE RENEWAL DOCUMENT

MPL NO. 2U43-1010 ACAD14 HL21201

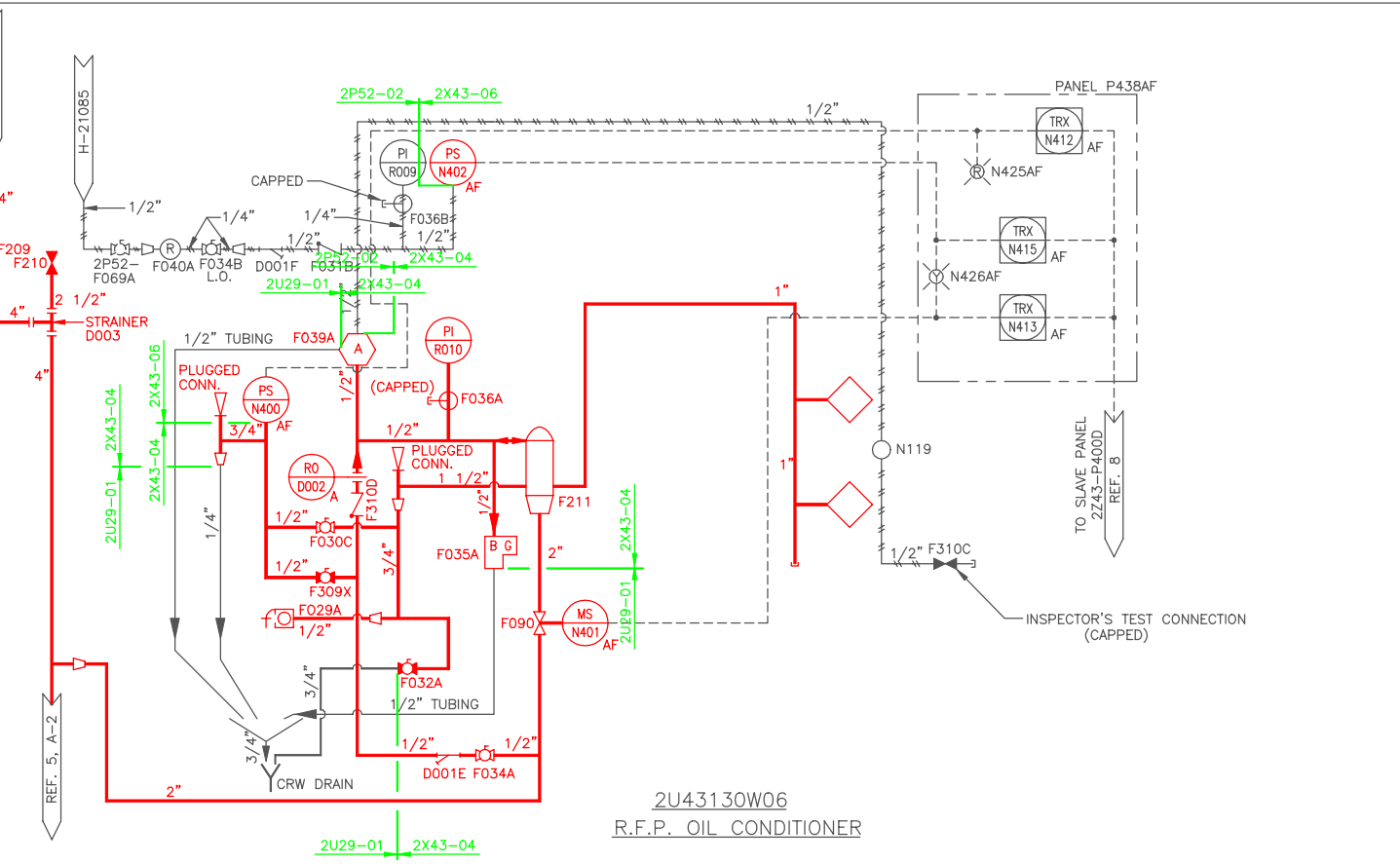
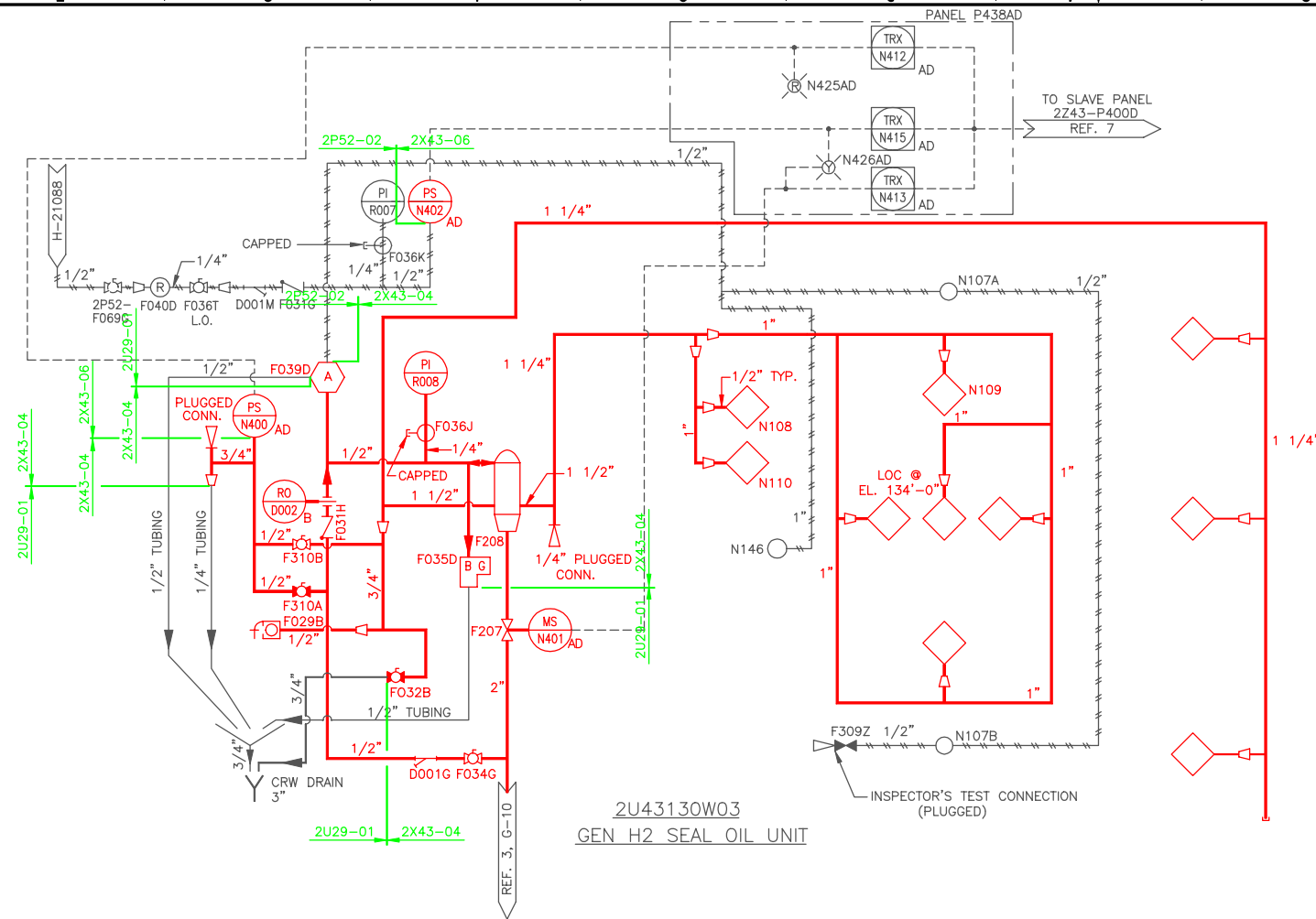
SOUTHERN COMPANY

LICENSE RENEWAL SCREENING FOR INFORMATION ONLY

EDWIN I. HATCH NUCLEAR PLANT UNIT No. 2
 TURBINE BUILDING
 FIRE PROTECTION SYSTEM P&ID SHT. 4 OF 5

Revision: A Date: 12-03-99
 APPROVED. ISSUED PER LICENSE RENEWAL BOUNDARY PACKAGES. DRAWING CREATED FROM H-21201, REV.11; BY TRM.

DATE	BY	DESCRIPTION
10-502	TRM	SCALE
	MDS	None



101212-7H