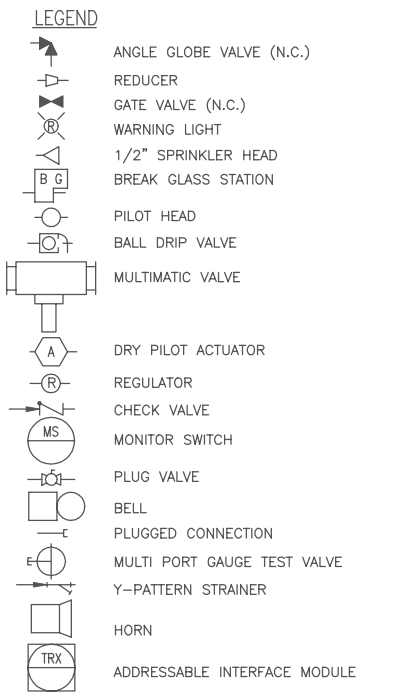


NOTES:
 1. ALL EQUIPMENT & INSTRUMENTS ARE PREFIXED BY 2U43 UNLESS OTHERWISE NOTED.



REFERENCES:

TITLE	MPL NO.	DWG NO.
1. TURBINE BUILDING-FIRE PROTECTION SYSTEM-P&ID	2U43-1010	H-21016
2. TURBINE BUILDING-FIRE PROTECTION SYSTEM -P&ID SHT. 4 OF 5	2U43-1010	H-21201
3. FIRE PROTECTION -FCD, 2U43112W02		B-24703
4. SYSTEM NO. 19 (2U43112W02) TURBINE BLDG. CONDENSERS-WEST END AREA (EL. 112'-0")		SX-26304
5. FIRE PROT. PREACTION TYPE AUTO SPR. SYS. - DOMESTIC DWG. TAKES PRECEDENCE OVER VENDOR DWG.		H-26374
6. SYSTEM NO. 20 (2U43130W04) TURBINE BLDG. CONDENSERS-WEST END AREA (EL. 146'-3")		SX-26306
7. FIRE PROTECTION - PIPING - HYDROGEN SEAL OIL UNIT		H-26374
8. FIRE PROTECTION-FCD, 2U43130W04		B-24704

BOUNDARY DIAGRAM NO.: 2X43-B01-02
FUNCTION(S) NO.: 2X43-04
 2X43-06
PREPARED BY: M D STEPHENS
DATE: 2/6/98
REVIEWED BY: ALEX MORRISON
DATE: 7/13/98

BOUNDARY DIAGRAM NO.: 2X43-B06-04
FUNCTION(S) NO.: 2X43-06
PREPARED BY: M D STEPHENS
DATE: 3/19/98
REVIEWED BY: ALEX MORRISON
DATE: 7/15/98

LICENSE RENEWAL DOCUMENT

MPL NO. 2U43-1010 ACAD14 HL21200

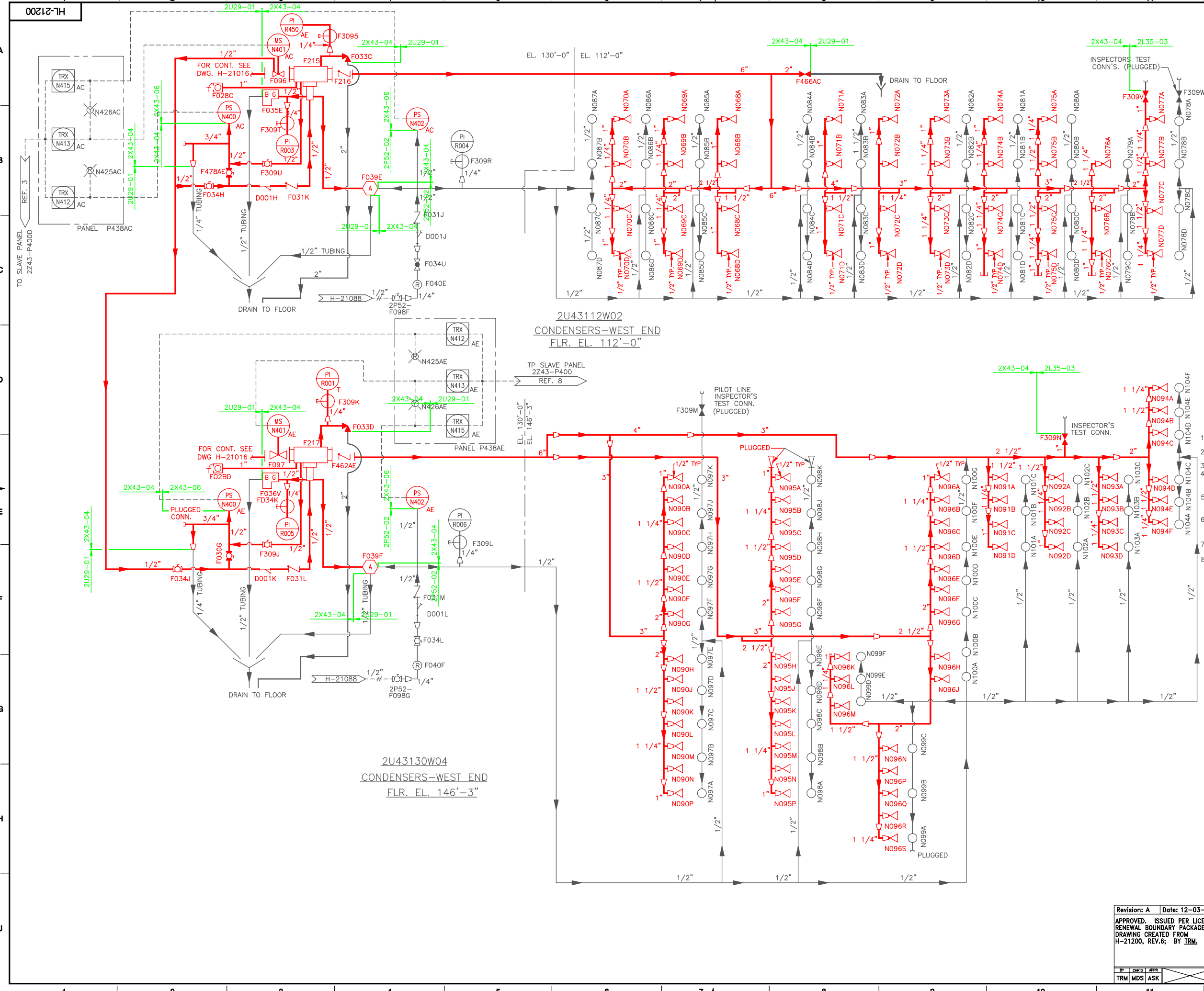
SOUTHERN COMPANY

LICENSE RENEWAL SCREENING FOR INFORMATION ONLY

EDWIN I. HATCH NUCLEAR PLANT UNIT No.2
 TURBINE BUILDING
 FIRE PROTECTION SYSTEM P&ID SHT 3 OF 5

DATE	BY	CHKD.	APPR.	LOCATION	DOCUMENT NUMBER	REVISION
	TRM	LCF				
	DATE	SCALE		10-502	HL-21200	A
		None				

Revision: A Date: 12-03-99
 APPROVED, ISSUED PER LICENSE RENEWAL BOUNDARY PACKAGES. DRAWING CREATED FROM H-21200, REV.6; BY TRM.



TO SLAVE PANEL 2Z43-P4000 REF. 3

2U43112W02
 CONDENSERS-WEST END
 FLR. EL. 112'-0"

TP SLAVE PANEL 2Z43-P400 REF. 8

2U43130W04
 CONDENSERS-WEST END
 FLR. EL. 146'-3"