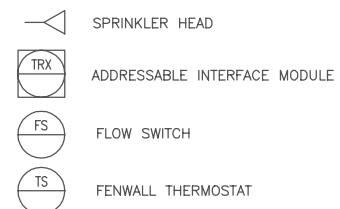


1. ALL EQUIPMENT AND INSTRUMENTS ARE PREFIXED BY MPL 2U43 UNLESS OTHERWISE NOTED.
2. TEMP SWITCHES N404AA-AH ARE PART OF THE DETECTION SYSTEM LISTED WITH THE ASSOCIATED TRX.

LEGEND



REFERENCES

TITLE	MPL NO.	DWG. NO.
1. TURBINE BLDG. FIRE PROTECTION SYSTEM P&ID	2U43-1010	H-21016
2. PUMP HOUSE FIRE PROTECTION P&ID		H-11033
3. SYS NO 21-TURB BEARING PROT-EL 130"-0"-2U43		SX-26307
4. SYS NO. 21 TURB BEARING PROT-SECT & DET-2U43		SX-26308
5. TURBINE BUILDING FIRE PROT. SYS. PLAN-2U43-1010		H-21176
6. FIRE PROTECTION, FCD	2U43164W01	B-24649
7. FIRE PROTECTION, FCD	2U43164W03	B-24650
8. FIRE PROTECTION, FCD	2U43164W05	B-24651
9. FIRE PROTECTION, FCD	2U43164W07	B-24652
10. FIRE PROTECTION, FCD	2U43164W09	B-24653
11. FIRE PROTECTION, FCD	2U43164W11	B-24654
12. FIRE PROTECTION, FCD	2U43164W13	B-24655
13. FIRE PROTECTION, FCD	2U43164W15	B-24656
14. FIRE PROTECTION, FCD	2U43164D02	B-24641
15. FIRE PROTECTION, FCD	2U43164D04	B-24642
16. FIRE PROTECTION, FCD	2U43164D06	B-24643
17. FIRE PROTECTION, FCD	2U43164D08	B-24644
18. FIRE PROTECTION, FCD	2U43164D10	B-24645
19. FIRE PROTECTION, FCD	2U43164D12	B-24646
20. FIRE PROTECTION, FCD	2U43164D14	B-24647
21. FIRE PROTECTION, FCD	2U43164D16	B-24648

**BOUNDARY DIAGRAM NO.: 2X43-B06-25**  
**FUNCTION(S) NO.: 2X43-06**  
**PREPARED BY: M.D. STEPHENS**  
**DATE: 03-19-98**  
**REVIEWED BY: ALEX MORRISON**  
**DATE: 07-15-98**

**BOUNDARY DIAGRAM NO.: 2X43-B01-09**  
**FUNCTION(S) NO.: 2X43-04, 2X43-06**  
**PREPARED BY: M.D. STEPHENS**  
**DATE: 02-06-98**  
**REVIEWED BY: ALEX MORRISON**  
**DATE: 07-13-98**

LICENSE RENEWAL DOCUMENT

MPL No. 2U43-1010 ACAD14 HL21189

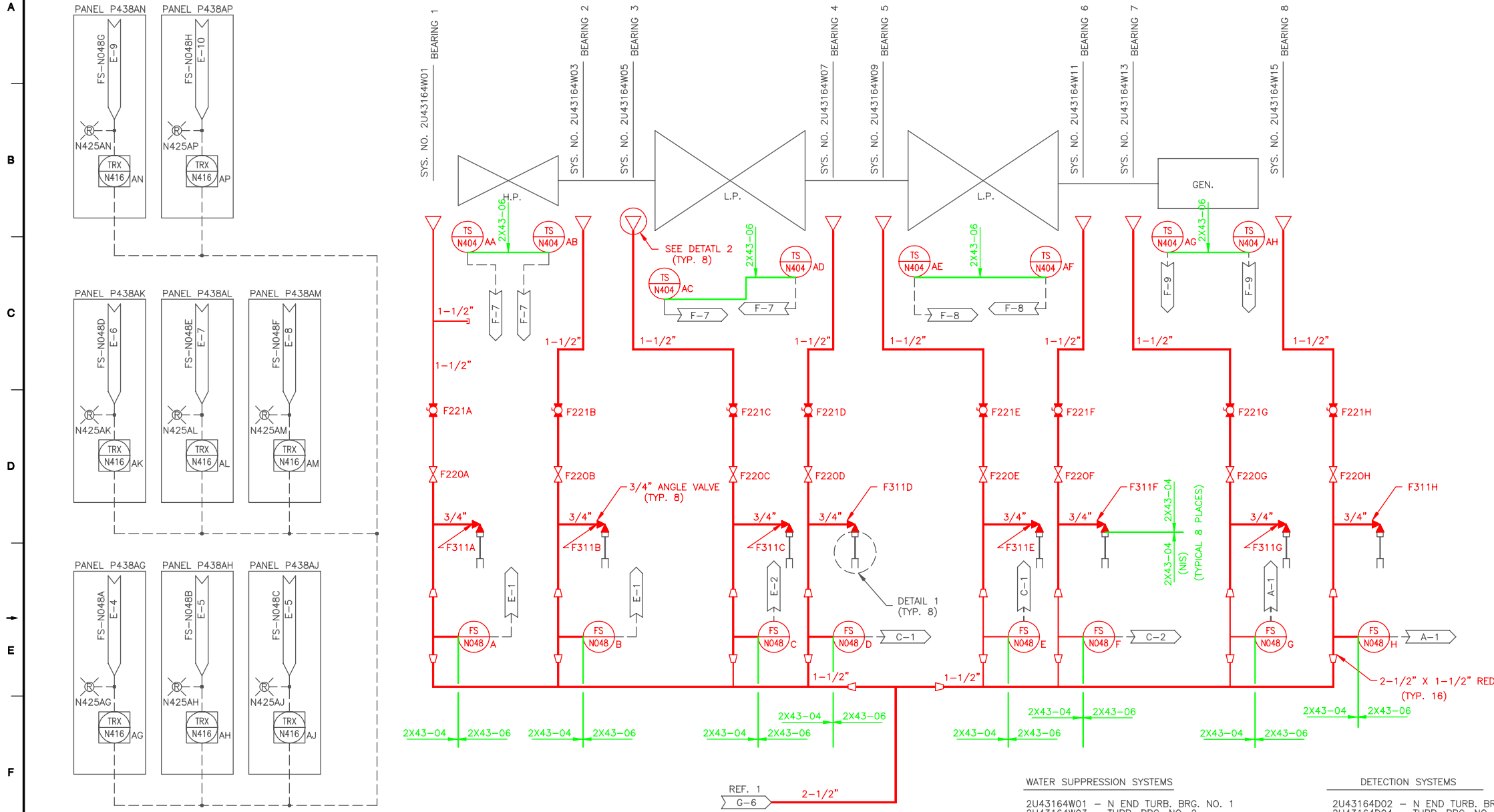


LICENSE RENEWAL SCREENING FOR INFORMATION ONLY

EDWIN I. HATCH NUCLEAR PLANT UNIT No.2  
 TURBINE BLDG. FIRE PROTECTION FOR TURBINE BEARINGS P&ID

Revision: A Date: 12-22-99  
 APPROVED, ISSUED PER LICENSE RENEWAL BOUNDARY PACKAGES. DRAWING CREATED FROM H-21189, REV. 5; ECB

BY	CHKD.	APPR.	DATE	SCALE	LOCATION	DOCUMENT NUMBER	REVISION
ECB	MDS	ASK		None	10-502	HL-21189	A



- WATER SUPPRESSION SYSTEMS**
- 2U43164W01 - N END TURB. BRG. NO. 1
  - 2U43164W03 - TURB. BRG. NO. 2
  - 2U43164W05 - TURB. BRG. NO. 3
  - 2U43164W07 - TURB. BRG. NO. 4
  - 2U43164W08 - TURB. BRG. NO. 5
  - 2U43164W09 - TURB. BRG. NO. 6
  - 2U43164W11 - GEN. BRG. NO. 7
  - 2U43164W13 - GEN. BRG. NO. 7
  - 2U43164W15 - S END GEN. BRG. NO. 8
- DETECTION SYSTEMS**
- 2U43164D02 - N END TURB. BRG. NO. 1
  - 2U43164D04 - TURB. BRG. NO. 2
  - 2U43164D06 - TURB. BRG. NO. 3
  - 2U43164D08 - TURB. BRG. NO. 4
  - 2U43164D10 - TURB. BRG. NO. 5
  - 2U43164D12 - TURB. BRG. NO. 6
  - 2U43164D14 - GEN. BRG. NO. 7
  - 2U43164D16 - S END GEN. BRG. NO. 8

