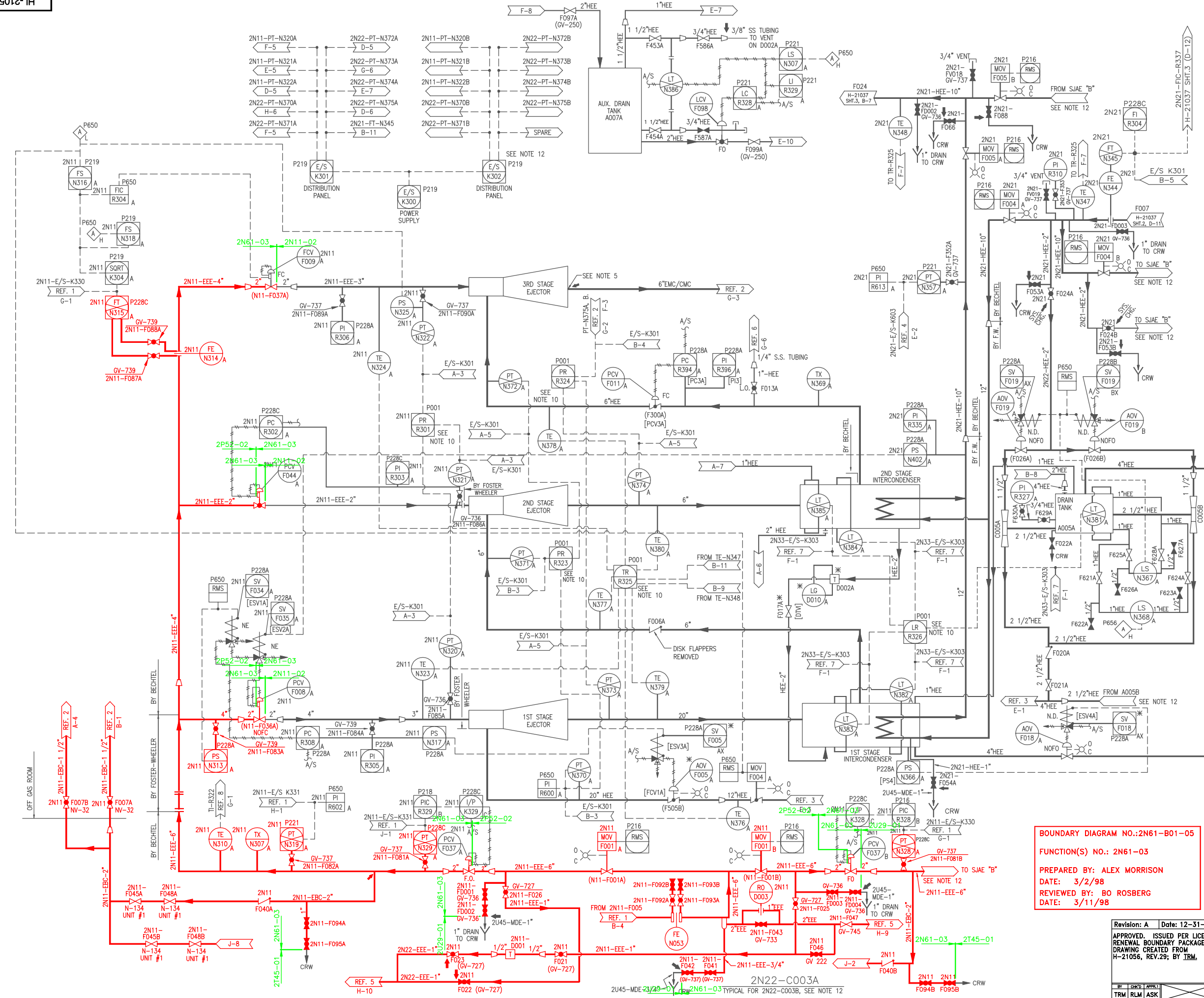


NOTES

1. ALL EQUIPMENT & INSTRUMENTS PREFIXED BY MPL NO. 2N22 UNLESS OTHERWISE NOTED.
2. WHERE GV NUMBERS ARE SHOWN, THE VALVES ARE TAGGED WITH THESE NUMBERS; WHERE GV NUMBERS ARE NOT SHOWN, THE VALVES ARE TAGGED WITH MPL NUMBERS.
3. VALVE AND INSTRUMENT NUMBERS IN [] INDICATE VENDOR'S IDENTIFICATION NUMBER.
4. VALVE AND INSTRUMENT NUMBERS IN () INDICATE UNIT 1 IDENTIFICATION NUMBER.
5. STEAM JET AIR EJECTOR DISCHARGE NOZZLE FLANGE SHALL HAVE 1500# RATING.
6. ANY ADDITIONAL HIGH POINT VENTS AND LOW POINT DRAINS TO BE ADDED BY FIELD AS REQUIRED.
7. INSTRUMENT LINE VALVING MUST COMPLY WITH PIPING STANDARD SPEC.
8. FOR LOCATION AND IDENTIFICATION OF INSTRUMENTS SEE INSTRUMENT DATA SHEET LISTED IN MPL FOR EACH INSTRUMENT.
9. INSTRUMENT PIPING OR TUBING BEYOND THE ROOT VALVE IS TO BE IN ACCORDANCE WITH THE I.I.D.'S DWG A-26412.
10. LR-R326 IS A 12 POINT RECORDER USED FOR A&B EJECTORS. TR-R325 IS A 24 POINT RECORDER USED FOR A&B EJECTORS. 2N11-PR-R301, 2N22-R324, 2N22-R323 ARE EACH 3 POINT RECORDERS AND WILL BE SWITCHED BACK AND FORTH BETWEEN THE A&B EJECTOR.
11. ALL INSTRUMENTS AND VALVES WITH SUFFIX "A" FOR SIAE "A" HAVE A CORRESPONDING SUFFIX "B" FOR SIAE "B".
12. SYSTEM "A" SHOWN, SYSTEM "B" IDENTICAL EXCEPT WHERE NOTED.
13. AN ASTERISK * INDICATES SUPPLIED BY EQUIPMENT VENDOR.
14. THE INTERNALS FOR THIS CHECK VALVE HAVE BEEN REMOVED.

REFERENCES

REFERENCE	MPL NO.	DWG. NO.
1. MAIN STEAM P&ID	2N11-1010	H-21012
2. OFFGAS SYSTEM P&ID	2N62-1010	H-26045
3. CONDENSER VACUUM & GLAND SEAL SYS. P&ID	2N22-1010	H-21030
4. CNDS. & FEEDWATER SYSTEM P&ID SH. 1	2N21-1010	H-21037
5. MAIN & RFP TURBINE DRAINS P&ID	2N22-1010	H-21031
6. PROCESS RADIATION MONITORING SYSTEM P&ID SH. 1	2D11-1010	H-26011
7. STEAM SEAL SYSTEM P&ID	2N33-1010	H-21046
8. MSR & HTR VENTS AND SHELL DRAINS P&ID SH. 2	2N22-1010	H-21024



BOUNDARY DIAGRAM NO.: 2N61-B01-05
FUNCTION(S) NO.: 2N61-03
 PREPARED BY: ALEX MORRISON
 DATE: 3/2/98
 REVIEWED BY: BO ROSBERG
 DATE: 3/11/98

LICENSE RENEWAL DOCUMENT

MPL NO. 2N22 ACAD14 HL21056

SOUTHERN COMPANY

LICENSE RENEWAL SCREENING FOR INFORMATION ONLY

EDWIN I. HATCH NUCLEAR PLANT UNIT No.2
 STEAM JET AIR EJECTOR SYSTEM P&ID

DATE	BY	TRM	SCALE	LOCATION	DOCUMENT NUMBER	REVISION
			None	10-502	HL-21056	A

Revision: A Date: 12-31-99
 APPROVED, ISSUED PER LICENSE RENEWAL BOUNDARY PACKAGES. DRAWING CREATED FROM H-21056, REV.29; BY IRM.