

1. ALL EQUIPMENT AND INSTRUMENTS PREFIXED BY MPL NUMBER 2N33 UNLESS OTHERWISE NOTED.
2. WHERE GV-NUMBERS ARE SHOWN, THE VALVES ARE TAGGED WITH THESE NUMBERS; WHERE GV-NUMBERS ARE NOT SHOWN, THE VALVES ARE TAGGED WITH THE MPL-NUMBER.
3. ANY ADDITIONAL HIGH POINT VENTS AND LOW POINT DRAINS TO BE ADDED BY FIELD AS REQUIRED.
4. FOR LOCATION AND IDENTIFICATION OF INSTRUMENTS, SEE INSTRUMENT DATA SHEET LISTED IN MPL FOR EACH INSTRUMENT.
5. INSTRUMENT LINE VALVING MUST COMPLY WITH PIPING STANDARD SPECIFICATIONS.
6. INSTRUMENT PIPING OR TUBING BEYOND THE ROOT VALVE IS TO BE ACCORDANCE WITH THE INSTRUMENT INSTALLATION DETAILS DRAWING A-26412.
7. VALVE AND INSTRUMENT NUMBERS INDICATED THUS () ARE G.E. NUMBERS.
8. CONNECTION NUMBERS SHOWN ON CONDENSERS CORRESPOND TO CONDENSER MANUFACTURER'S CONNECTION NUMBERS.
9. LENGTH OF PIPING RUN BETWEEN RV-F006 AND THE STEAM SEAL HEADER SHOULD BE GREATER THAN 50 EQUIVALENT FEET (3" SCH. 40) BUT LESS THAN 75 EQUIVALENT FEET (3" SCH. 40).

REFERENCES

TITLE	MPL NO.	DWG. NO.
1. MAIN AND RFP TURBINE DRAINS P&ID	2N22-1010	H-21031
2. REACTOR, RADWASTE & TURBINE BLDG. AUX. STEAM SYSTEM P&ID	2P61-1010	H-26063
3. MAIN STEAM P&ID	2N11-1010	H-21012
4. DIAGRAM OF STEAM SEAL PIPING	2N33-G001	G.E. DWG No. 805E697
5. REHEAT SYSTEM P&ID	2N38-1010	H-21013
6. TURBINE LUBE OIL SYS. P&ID	2N34-1010	H-21051
7. TURBINE & GENERATOR AUX. SYS. IED TURBINE VALVES	2N32-1010	H-21242
8. TURBINE & GENERATOR AUX. SYS. IED CONTROL OIL & CONTROL FLUID	2N32-1010	H-21243
9. TURBINE & GENERATOR AUX. SYS. IED TURBINE GENERATOR SEAL OIL CONTROL SYS.	2N42-1010	H-21245
10. TURBINE BLDG.-COND. & F.W. BYPASS & DRAINS SYS. P&ID, SHT. 2	2N21-1010	H-21038
11. S.J.A.E. SYSTEM P&ID	2N22-1010	H-21056
12. CONDENSER VACUUM AND GLAND SEAL SYS. P&ID		H-21030
13. CONDENSATE AND FEEDWATER SYS. P&ID		H-21037 SH. 3

BOUNDARY DIAGRAM NO.: 2N61-B01-06
FUNCTION(S) NO.: 2N61-03
PREPARED BY: ALEX MORRISON
DATE: 3/2/98
REVIEWED BY: BO ROSBERG
DATE: 3/11/98

LICENSE RENEWAL DOCUMENT

MPL NO. 2N33-1010 ACAD14 HL21046

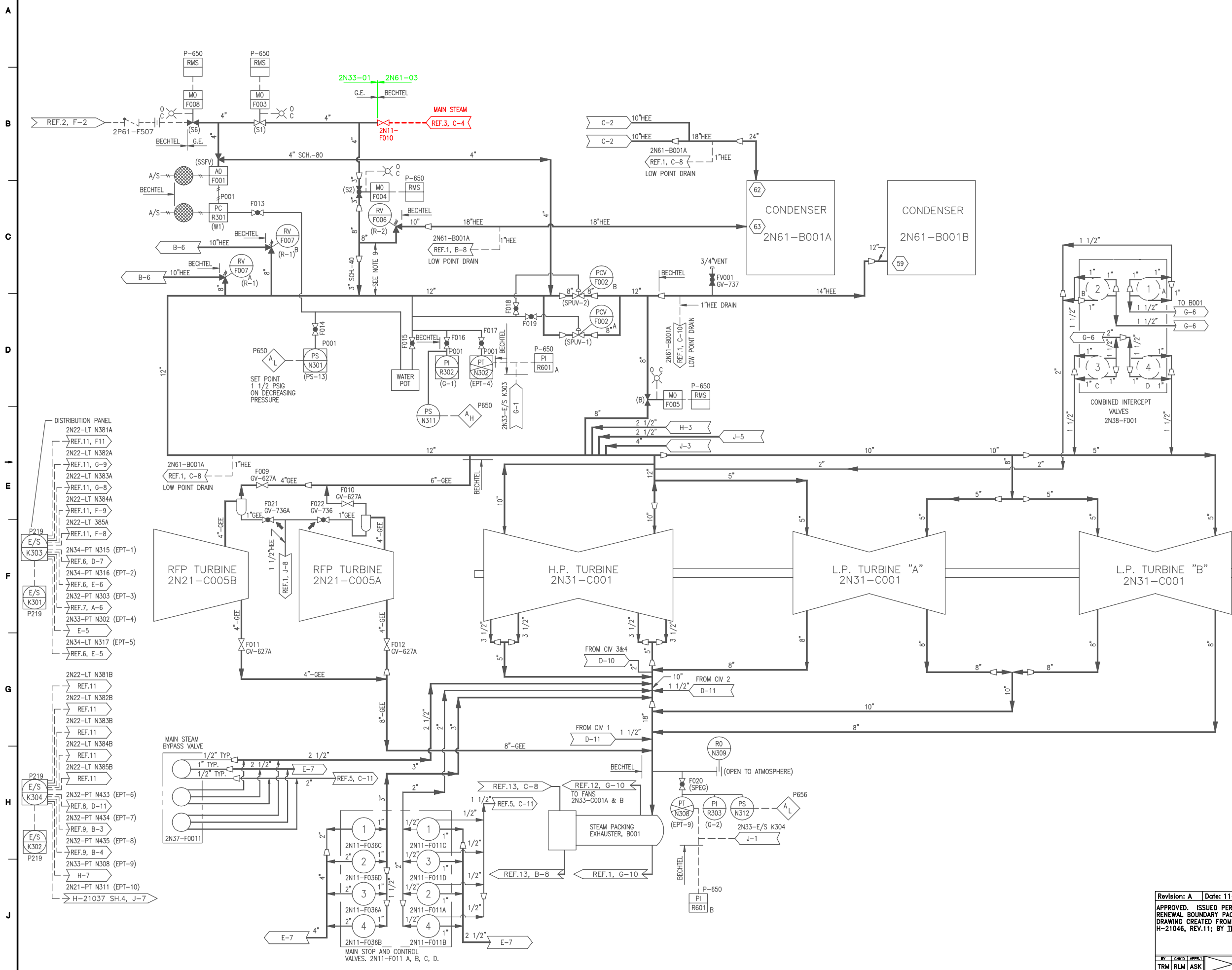
SOUTHERN COMPANY

LICENSE RENEWAL SCREENING FOR INFORMATION ONLY

EDWIN I. HATCH NUCLEAR PLANT UNIT No.2
 TURBINE BUILDING
 STEAM SEAL SYSTEM-P.&I.D.

DESIGNED	TRM	SCALE	10-502	DOCUMENT NUMBER	HL-21046	REVISION	A
CHECKED	LM	DATE	None				

Revision: A Date: 11-02-99
 APPROVED, ISSUED PER LICENSE RENEWAL BOUNDARY PACKAGES. DRAWING CREATED FROM H-21046, REV.11; BY TRM.



DISTRIBUTION PANEL

2N22-LT N381A	REF.11, F11
2N22-LT N382A	REF.11, G-9
2N22-LT N383A	REF.11, G-8
2N22-LT N384A	REF.11, F-9
2N22-LT N385A	REF.11, F-8
2N34-PT N315 (EPT-1)	REF.6, D-7
2N34-PT N316 (EPT-2)	REF.6, E-6
2N32-PT N303 (EPT-3)	REF.7, A-6
2N33-PT N302 (EPT-4)	E-5
2N34-LT N317 (EPT-5)	REF.6, E-5
2N22-LT N381B	REF.11
2N22-LT N382B	REF.11
2N22-LT N383B	REF.11
2N22-LT N384B	REF.11
2N22-LT N385B	REF.11
2N32-PT N433 (EPT-6)	REF.8, D-11
2N32-PT N434 (EPT-7)	REF.9, B-3
2N32-PT N435 (EPT-8)	REF.9, B-4
2N33-PT N308 (EPT-9)	H-7
2N21-PT N311 (EPT-10)	H-21037 SH.4, J-7

E/S K303 P219
 E/S K301 P219
 E/S K304 P219
 E/S K302 P219

MAIN STOP AND CONTROL VALVES. 2N11-F011 A, B, C, D.