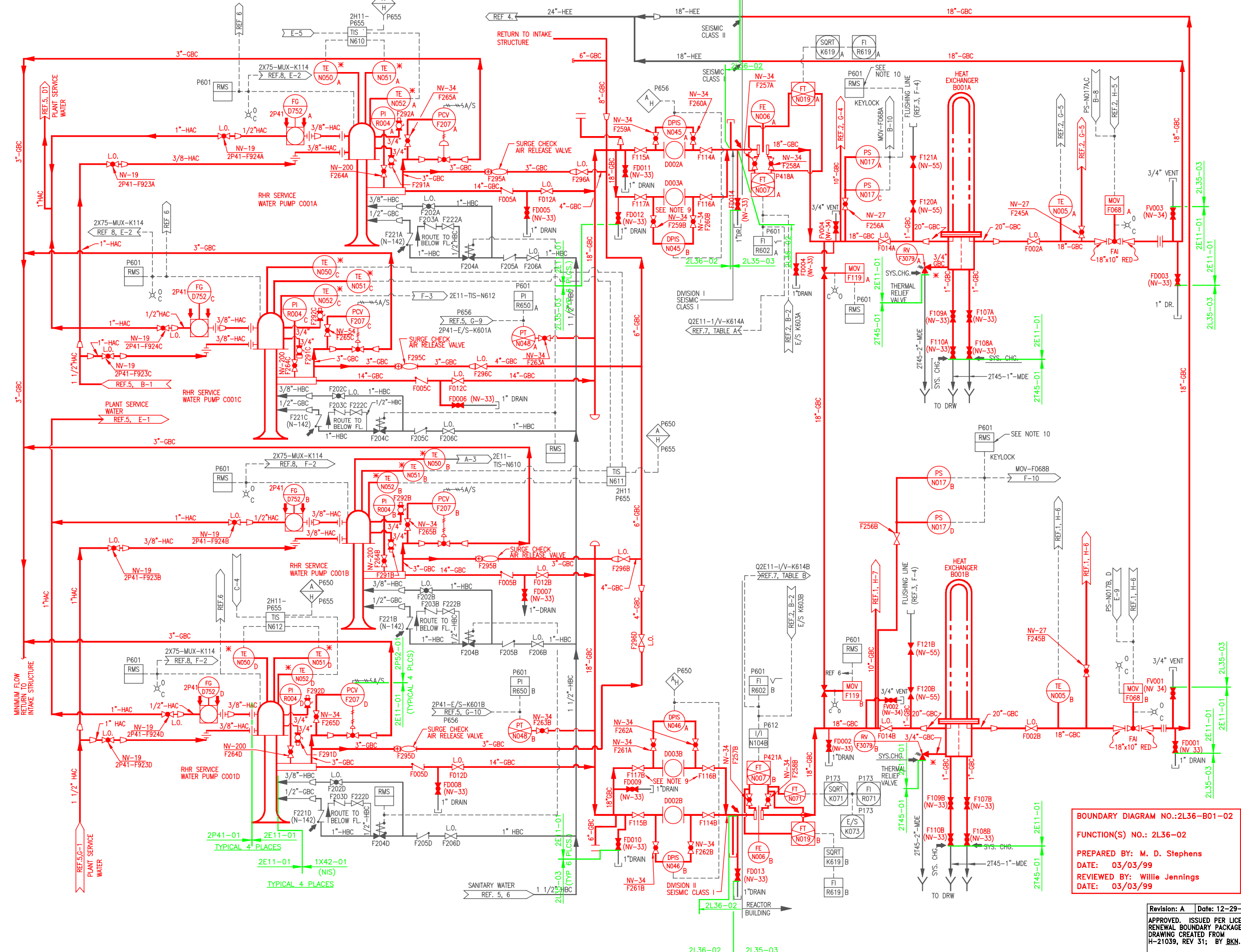


1. ALL EQUIPMENT AND INSTRUMENT PREFIXED BY MPL. NO. 2E11 UNLESS OTHERWISE NOTED.
2. WHERE GV-NUMBERS ARE SHOWN, THE VALVES ARE TAGGED WITH THESE NUMBERS; WHERE GV-NUMBERS ARE NOT SHOWN, THE VALVES ARE TAGGED WITH THE MPL-NUMBER.
3. ANY ADDITIONAL HIGH POINT VENTS AND LOW POINT DRAINS TO BE LOCATED BY FIELD AS REQUIRED.
4. FOR LOCATION AND IDENTIFICATION OF INSTRUMENTS, SEE INSTRUMENT DATA SHEET LISTED IN MPL. FOR EACH INSTRUMENT.
5. INSTRUMENT LINE VALVING MUST COMPLY WITH PIPING STANDARD SPECIFICATIONS.
6. INSTRUMENT STIPING OR TUBING BEYOND THE ROOT VALVE IS TO BE ACCORDANCE WITH THE INSTRUMENT INSTALLATION DETAILS DWG. A-26412.
7. VALVE NUMBER IN PARENTHESIS INDICATES VALVE NUMBER OF CORRESPONDING VALVE ON UNIT 1.
8. VALVES ON THIS DWG. ARE NUMBERED FD001 THRU FD020 FOR DRAIN VALVES FV001 THRU FV020 FOR VENT VALVES.
9. ONLY ONE STRAINER NEED BE IN SERVICE PER LOOP. POSITION INLET / OUTLET VALVES ACCORDINGLY, LOCK IN POSITION AFTERWARDS.
10. PRESSURE SWITCHES PSN017A & B CAN BE OVERRIDDEN PRIOR TO STARTING RHR SW PUMP BY USING OVERRIDE SWITCH.



REFERENCES:

TITLE	MPL. NO.	DWG. NO.
1. RHR SYSTEM P. & I. D. SHEET 1.	2E11-1010	H-26014
2. RHR SYSTEM P. & I. D. SHEET 2.	2E11-1010	H-26015
3. REACTOR & RADWASTE BLDG CONDENSATE STORAGE & TRANSFER SYSTEM P&ID	2P11-1010	H-26046
4. TURB. BLDG. CIRCULATING WATER SYSTEM P.&I.D.	2N71-1010	H-21026
5. SERVICE WATER SYSTEM P.&I.D. SHEET 1.	2P41-1010	H-21033
6. RESIDUAL HEAT REMOVAL FLOW CONTROL DIAGRAM	2E11-1030	H-26284
7. CLASS I.E. ANALOG SIGNAL CONVERSION / ISOLATION SYSTEM I.E.D.	2X75-1010	H-26284
8. DIGITAL INPUT SIGNALS TO THE ERF COMPUTER SYSTEM I.E.D. SHEET 2 OF 15.	2X75-1010	H-26164

BOUNDARY DIAGRAM NO.: 2P41-B01-03
 FUNCTION(S) NO.: 2P41-01, 2P41-03
 PREPARED BY: Bo Rosberg
 DATE: 02/12/98
 REVIEWED BY: Alex Morrison
 DATE: 02/18/98

BOUNDARY DIAGRAM NO.: 2E11-B01-09
 FUNCTION(S) NO.: 2E11-01
 PREPARED BY: Willie Jennings
 DATE: 02/02/98
 REVIEWED BY: William P. Evans
 DATE: 05/05/98

BOUNDARY DIAGRAM NO.: 2L36-B01-02
 FUNCTION(S) NO.: 2L36-02
 PREPARED BY: M. D. Stephens
 DATE: 03/03/99
 REVIEWED BY: Willie Jennings
 DATE: 03/03/99

LICENSE RENEWAL DOCUMENT

MPL. NO. 2E11-1010 ACAD14 HL21039



LICENSE RENEWAL SCREENING FOR INFORMATION ONLY

EDWIN I. HATCH NUCLEAR PLANT No. 2
 R.H.R. SERVICE WATER SYSTEM
 P. & I.D.

Revision: A Date: 12-29-99
 APPROVED, ISSUED PER LICENSE RENEWAL BOUNDARY PACKAGES. DRAWING CREATED FROM H-21039, REV 31; BY BKN.

BY	CHKD	APPRD	LOCATION	DOCUMENT NUMBER	REVISION
BKN	LCF				
BKN	RLM	ASK			

10-502 HL-21039 A