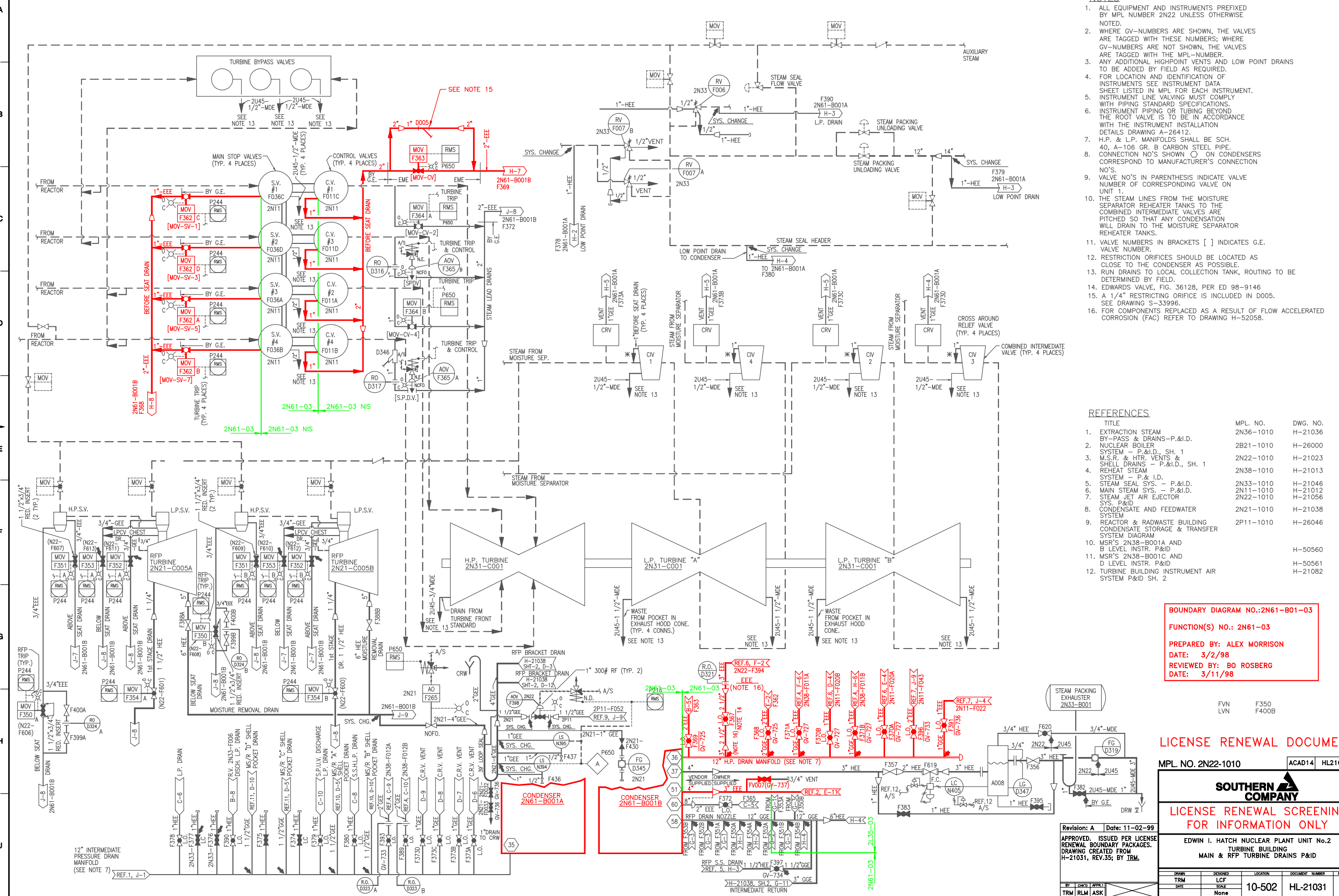


- NOTES**
- ALL EQUIPMENT AND INSTRUMENTS PREFIXED BY MPL NUMBER 2N22 UNLESS OTHERWISE NOTED.
 - WHERE GV-NUMBERS ARE SHOWN, THE VALVES ARE TAGGED WITH THESE NUMBERS; WHERE GV-NUMBERS ARE NOT SHOWN, THE VALVES ARE TAGGED WITH THE MPL-NUMBER.
 - ANY ADDITIONAL HIGHPOINT VENTS AND LOW POINT DRAINS TO BE ADDED BY FIELD AS REQUIRED.
 - FOR LOCATION AND IDENTIFICATION OF INSTRUMENTS SEE INSTRUMENT DATA SHEET LISTED IN MPL FOR EACH INSTRUMENT.
 - INSTRUMENT LINE VALVING MUST COMPLY WITH PIPING STANDARD SPECIFICATIONS.
 - INSTRUMENT PIPING OR TUBING BEYOND THE ROOT VALVE IS TO BE IN ACCORDANCE WITH THE INSTRUMENT INSTALLATION DETAILS DRAWING A-26412.
 - H.P. & L.P. MANIFOLDS SHALL BE SCH. 40, A-106 GR. B CARBON STEEL PIPE.
 - CONNECTION NO'S SHOWN \circ ON CONDENSERS CORRESPOND TO MANUFACTURER'S CONNECTION NO'S.
 - VALVE NO'S IN PARENTHESIS INDICATE VALVE NUMBER OF CORRESPONDING VALVE ON UNIT 1.
 - THE STEAM LINES FROM THE MOISTURE SEPARATOR REHEATER TANKS TO THE COMBINED INTERMEDIATE VALVES ARE PITCHED SO THAT ANY CONDENSATION WILL DRAIN TO THE MOISTURE SEPARATOR REHEATER TANKS.
 - VALVE NUMBERS IN BRACKETS [] INDICATES G.E. VALVE NUMBER.
 - RESTRICTION ORIFICES SHOULD BE LOCATED AS CLOSE TO THE CONDENSER AS POSSIBLE.
 - RUN DRAINS TO LOCAL COLLECTION TANK, ROUTING TO BE DETERMINED BY FIELD.
 - EDWARDS VALVE, FIG. 3612B, PER ED 98-9146
 - A 1/4" RESTRICTING ORIFICE IS INCLUDED IN D005. SEE DRAWING S-33996.
 - FOR COMPONENTS REPLACED AS A RESULT OF FLOW ACCELERATED CORROSION (FAC) REFER TO DRAWING H-52058.

REFERENCES

TITLE	MPL NO.	DWG. NO.
1. EXTRACTION STEAM BY-PASS & DRAINS-P.&I.D.	2N36-1010	H-21036
2. NUCLEAR BOILER SYSTEM - P.&I.D., SH. 1	2B21-1010	H-26000
3. M.S.R. & HTR. VENTS & SHELL DRAINS - P.&I.D., SH. 1	2N22-1010	H-21023
4. REHEAT STEAM SYSTEM - P.&I.D.	2N38-1010	H-21013
5. STEAM SEAL SYS. - P.&I.D.	2N33-1010	H-21046
6. MAIN STEAM SYS. - P.&I.D.	2N11-1010	H-21012
7. STEAM JET AIR EJECTOR SYS. P.&I.D.	2N22-1010	H-21056
8. CONDENSATE AND FEEDWATER SYSTEM	2N21-1010	H-21038
9. REACTOR & RADWASTE BUILDING CONDENSATE STORAGE & TRANSFER SYSTEM DIAGRAM	2P11-1010	H-26046
10. MSR'S 2N38-B001A AND B LEVEL INSTR. P.&ID		H-50560
11. MSR'S 2N38-B001C AND D LEVEL INSTR. P.&ID		H-50561
12. TURBINE BUILDING INSTRUMENT AIR SYSTEM P.&I.D. SH. 2		H-21082



BOUNDARY DIAGRAM NO.: 2N61-B01-03
FUNCTION(S) NO.: 2N61-03
 PREPARED BY: ALEX MORRISON
 DATE: 3/2/98
 REVIEWED BY: BO ROSBERG
 DATE: 3/11/98

LICENSE RENEWAL DOCUMENT

MPL. NO. 2N22-1010 ACAD14 HL21031



LICENSE RENEWAL SCREENING FOR INFORMATION ONLY

EDWIN I. HATCH NUCLEAR PLANT UNIT No.2
 TURBINE BUILDING
 MAIN & RFP TURBINE DRAINS P&ID

Revision: A Date: 11-02-99
 APPROVED, ISSUED PER LICENSE RENEWAL BOUNDARY PACKAGES.
 DRAWING CREATED FROM H-21031, REV.35; BY IRM.

BY	CHKD	APPR.	DATE	SCALE	LOCATION	DOCUMENT NUMBER	REVISION
TRM	RLM	ASK		None	10-502	HL-21031	A