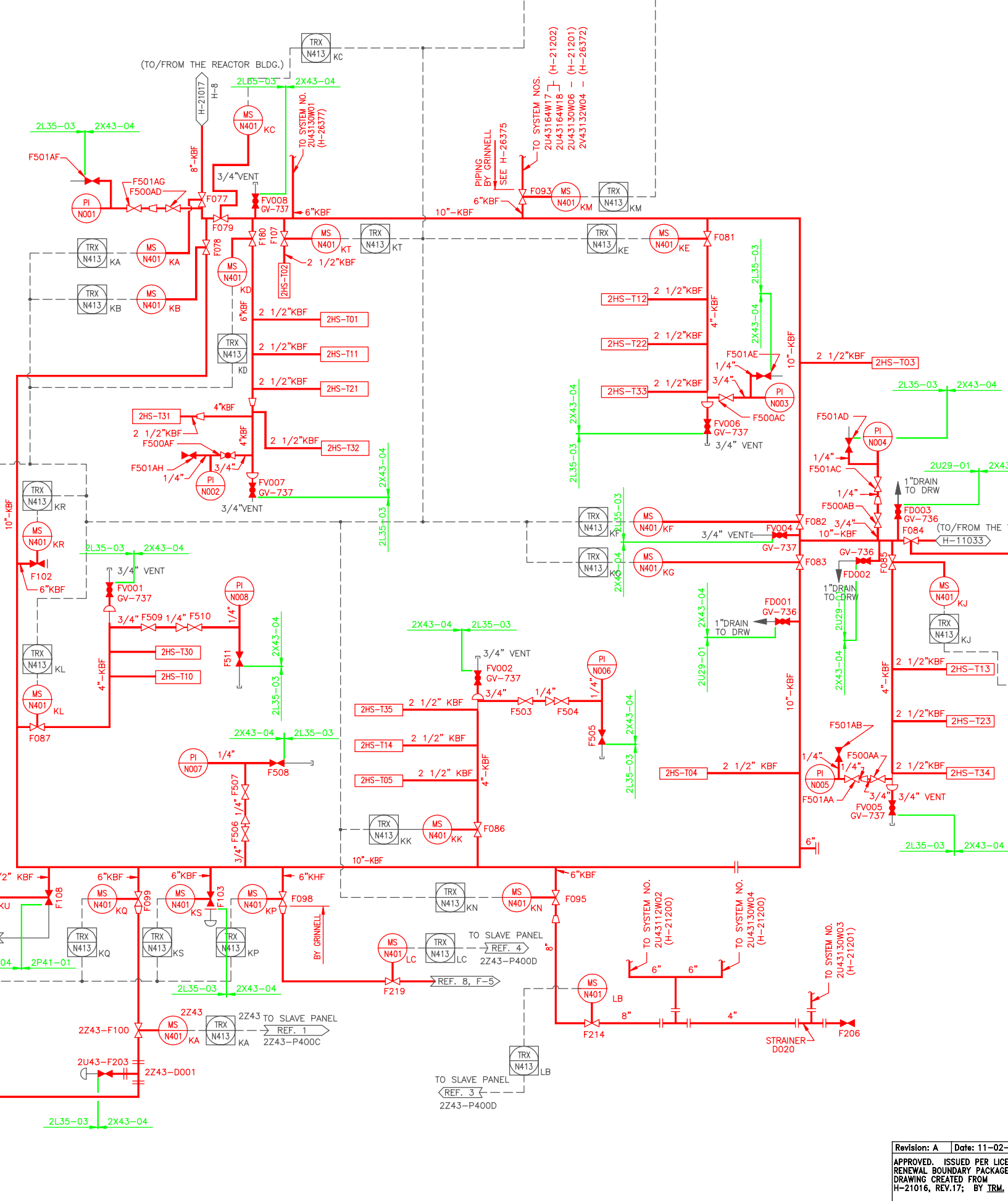
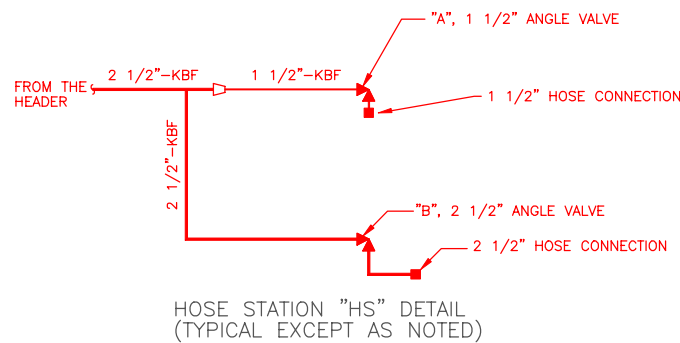


HOSE STATION	LOCATION		VALVE "A"	VALVE "B"	REMARKS
	ELEVATION	COLUMN	MPL. NO.	MPL. NO.	
2HS - T01	112'-0"	T16 - TA	2U43-F001	2U43-F004	
2HS - T03		T22 - TC	F005	F008	
2HS - T04		T21 - TG	F009	F012	
2HS - T02		T18 - TB	F013	F016	
2HS - T05		T18 - TI	F017	F020	
2HS - T11	130'-0"	T16 - TA	F021	F024	
2HS - T12		T20 - TA	F025	F028	
2HS - T13		T22 - TF	F029	F032	
2HS - T14		T18 - TE	F033	F036	
2HS - T10		T15 - TE	F037	F040	
2HS - T21	147'-0"	T16 - TA	F041	F044	
2HS - T22		T20 - TA	F045	F048	
2HS - T23		T22 - TF	F049	F052	
2HS - T31	164'-0"	T16 - TA	F053	F056	
2HS - T32		T18 - TD	F057	F060	
2HS - T33		T20 - TA	F061	F064	
2HS - T34		T22 - TF	F065	F068	
2HS - T35		T18 - TI	F069	F072	
2HS - T30		T15 - TG	F073	F076	



- NOTES**
1. ALL EQUIPMENT AND INSTRUMENTS PREFIXED BY MPL NUMBER 2U43 UNLESS OTHERWISE NOTED.
 2. WHERE GV-NUMBERS ARE SHOWN, THE VALVES ARE TAGGED WITH THESE NUMBERS: WHERE GV-NUMBERS ARE NOT SHOWN, THE VALVES ARE TAGGED WITH MPL NUMBER.
 3. ANY ADDITIONAL HIGH POINT VENTS & LOW POINT DRAINS TO BE ADDED BY FIELD AS REQUIRED.
 4. FOR LOCATION & IDENTIFICATION OF INSTRUMENTS SEE INSTRUMENT DATA SHEET LISTED IN MPL FOR EACH INSTRUMENT.
 5. INSTRUMENT LINE VALVING MUST COMPLY WITH PIPING STANDARD SPEC.
 6. INSTRUMENT PIPING OR TUBING BEYOND THE ROOT VALVE IS TO BE IN ACCORDANCE WITH THE INSTRUMENT INSTALLATION DETAILS DWG. A-26412
 7. ALL HEADER VALVES TO BE LOCKED OPEN.
 8. FIRE SYSTEM NO. 2243112W17
 9. FIRE SYSTEM NO. 2U43112W03
 10. FIRE SYSTEM NO. 2U43130W08
 11. FIRE SYSTEM NO. 2U43164W19

- LEGEND**
- (MS) MONITOR SWITCH
 - (TRX) ADDRESSABLE INTERFACE MODULE

- REFERENCES:**
1. FIRE PROTECTION FCD 2243112W17 B-24715
 2. FIRE PROTECTION FCD 2U43112W03 B-24712
 3. FIRE PROTECTION FCD 2U43130W08 B-24713
 4. FIRE PROTECTION FCD 2U43164W19 B-24714
 5. TURBINE BLDG. FIRE PROTECTION SYSTEM P&ID SHT. 1 H-21198
 6. TURBINE BLDG. FIRE PROTECTION SYSTEM P&ID SHT. 2 H-21199
 7. TURBINE BLDG. SERVICE WATER SYS. P&ID SHT. 3 H-21035
 8. TURBINE BLDG. FIRE PROTECTION BEARINGS P&ID H-21189

BOUNDARY DIAGRAM NO.: 2X43-B01-01
FUNCTION(S) NO.: 2X43-04
 PREPARED BY: M D STEPHENS
 DATE: 2/6/98
 REVIEWED BY: ALEX MORRISON
 DATE: 7/13/98

LICENSE RENEWAL DOCUMENT
 (LVN-FD003)
 (LVN-FV006)
 MPL. NO. 2U43-1010 (LVN-F220) ACAD14 HL21016

SOUTHERN COMPANY

LICENSE RENEWAL SCREENING FOR INFORMATION ONLY

EDWIN I. HATCH NUCLEAR PLANT UNIT No.2
 TURBINE BUILDING FIRE PROTECTION SYSTEM P.&ID.

DATE	BY	DESCRIPTION
11-02-99	TRM	APPROVED. ISSUED PER LICENSE RENEWAL BOUNDARY PACKAGES. DRAWING CREATED FROM H-21016, REV.17; BY TRM.

DATE	BY	SCALE	LOCATION	DOCUMENT NUMBER	REVISION
	TRM	None	10-502	HL-21016	A