

- NOTES:**
1. DELETED.
  2. DELETED.
  3. DELETED.
  4. FOR CABLE NUMBER SEE TABLE 1.
  5. NO STARTER INSTALLED.
  - 6.\* CONSTANT RATING FOR MAGNETIC BREAKER WITH ADJUSTABLE INSTANTANEOUS TRIP RANGE.
  7. CONTROL POWER TOGGLE SWITCH FOR ALTERNATE SUPPLY BREAKER IS SHUT OFF AT THE BREAKER
  8. FOR FUSE DESIGN INFORMATION SEE MASTER FUSE LIST.
  9. OVERLOAD RELAY NOT INSTALLED.
  10. SEE MCC DATA SHEET B-17377 FOR MOTOR DATA.

- REFERENCES:**
1. B-17377 REACTOR BUILDING MCC SCHEDULE (R24-S022) SHEET 1 & SHEET 2
  2. B-17025 MCC FRONT ELEVATION DRAWINGS SHEET 14 & SHEET 15
  3. S-13896 NORMAL AND STANDBY SOURCE MAIN BREAKER CONN DIAGRAM
  4. H-17244-1R24-S022 EXTERNAL CONNECTION DIAGRAM H-17246
  5. SX-18352 & 1R24-S022 MCC LAYOUT SHEET 1 AND 2 SX-18353
  6. H-17162 HPCI E41 SYSTEM ELEMENTARY DIAGRAM
  7. H-17163 HPCI E41 SYSTEM ELEMENTARY DIAGRAM
  8. H-17164 HPCI E41 SYSTEM ELEMENTARY DIAGRAM
  9. H-17817 A71 SYSTEM ELEMENTARY DIAGRAM
  10. H-17813 A71 SYSTEM ELEMENTARY DIAGRAM
  11. H-17160 HPCI E41 SYSTEM ELEMENTARY DIAGRAM
  12. A-10131 LOAD LIST FOR 1R24-S022

**BOUNDARY DIAGRAM NO.: 1R42-B01-06**  
**FUNCTION(S) NO.: 1R42-01**  
**PREPARED BY: MARK CRISLER**  
**DATE: 4/20/98**  
**REVIEWED BY: RENEE RITCHEY**  
**DATE: 4/28/98**

**TABLE 1**

MCC COMP NO.	CABLE 1	CABLE 2
4A	R24-S022-ES6-M07E	R24-S022-ES6-M07C R24-S022-ES6-M07D
5A	R24-S022-ES6-M08	R24-S022-ES6-M08B
5C	R24-S022-ES6-M10	R24-S022-ES6-M10B
6A	R24-S022-ES6-M11B	R24-S022-ES6-M11 R24-S022-ES6-M11A
6C	R24-S022-ES6-M12B	R24-S022-ES6-M12

**LICENSE RENEWAL DOCUMENT**

MPL NO. 1R24 ACAD14 HL17023



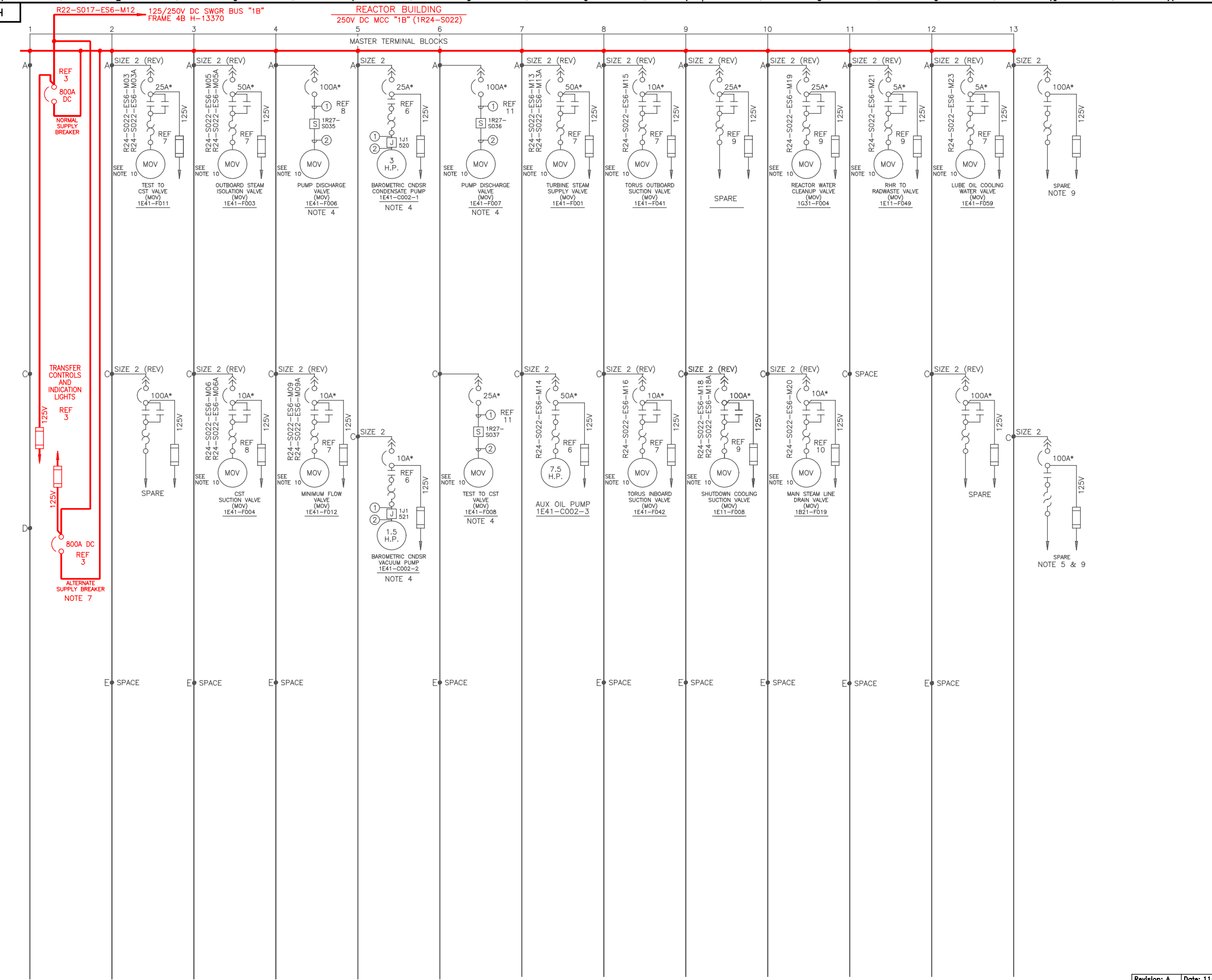
**LICENSE RENEWAL SCREENING FOR INFORMATION ONLY**

EDWIN I. HATCH NUCLEAR PLANT UNIT No.1  
 SINGLE LINE DIAGRAM - REACTOR BUILDING  
 250V DC ESSENTIAL MCC "1B"  
 MPL 1R24-S022

Revision: A Date: 11-17-99  
 APPROVED, ISSUED PER LICENSE RENEWAL BOUNDARY PACKAGES. DRAWING CREATED FROM H-17023, REV.22; BY TRM.

BY	CHK'D	APPR'D
TRM	RBR	ASK

DATE	SCALE	LOCATION	DOCUMENT NUMBER	REVISION
	None	10-502	HL-17023	A



82021-7H