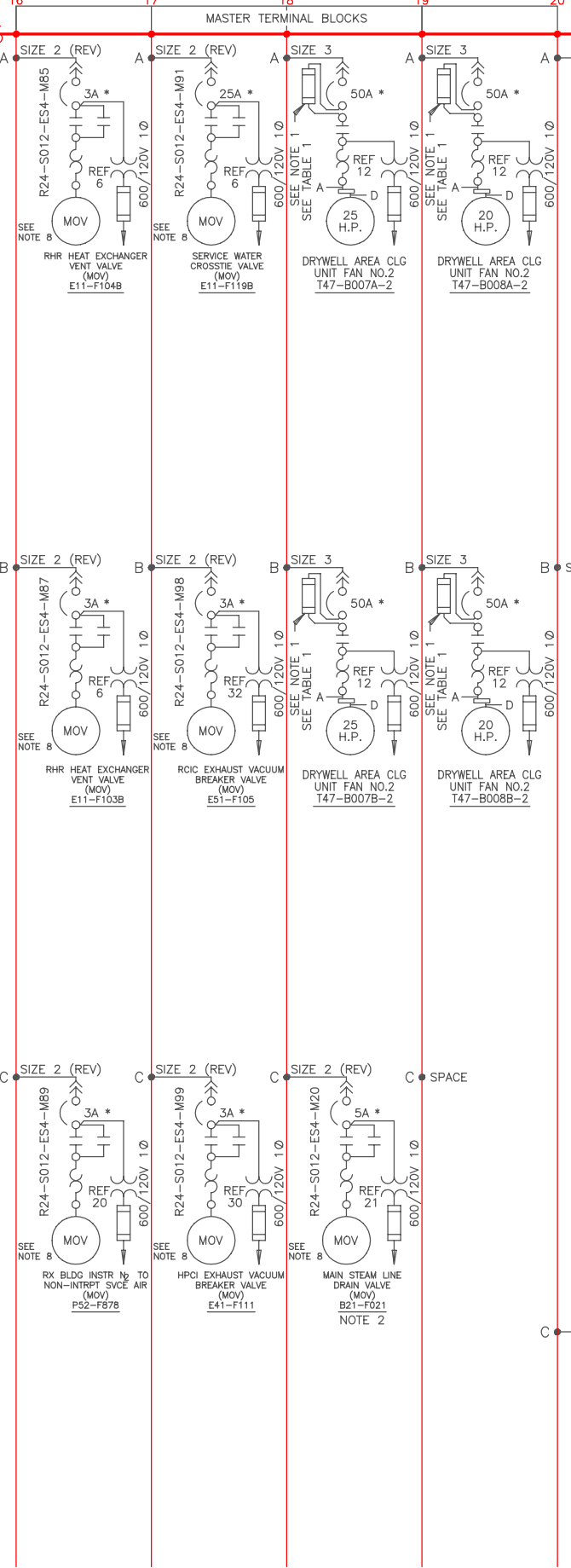


REACTOR BUILDING  
600V AC MCC (R24-S012)

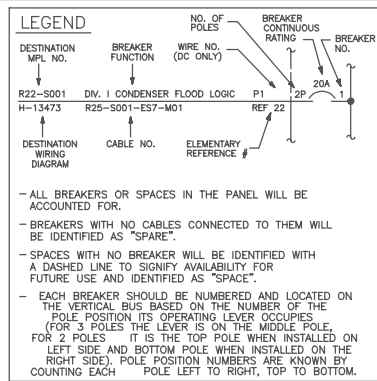
CONTINUED FROM  
DRAWING H-17011



| DESTINATION WIRING DIAGRAM  | DESTINATION WIRING DIAGRAM       | DESTINATION WIRING DIAGRAM                                    | DESTINATION WIRING DIAGRAM        | DESTINATION WIRING DIAGRAM  | DESTINATION WIRING DIAGRAM        |
|---|----------------------------------|---|-----------------------------------|---|-----------------------------------|
| R24-S012 DRYWELL AREA COOLING UNIT MOTOR HEATERS (SEE NOTE 5)         | H-17229 FIELD JUMPER REF 12      | R27-S008 DRYWELL AREA COOLING UNIT MOTOR HEATERS (SEE NOTE 6) | H-17991 R24-S012-ESB-M97DD REF 12 | B31-P003B MG SET "B" AC AUXILIARY CIRCUIT REF 23                        | H-17935 R24-S012-ESB-M97Z REF 23  |
| H21-P154 MG SET "B" FLUID DRIVE CASE BREATHER FAN REF 23              | H-17993 R24-S012-ESB-M97X REF 23 | E41-N076 HPCI INLET DRAIN POT HIGH LEVEL REF 23               | H-42855 R24-S012-ESB-M97EE REF 23 | E41-P003 HPCI EXHAUST DRAIN POT LEVEL LOGIC REF 23                      | H-42855 R24-S012-ESB-M97FF REF 23 |
| H21-P659 PANEL H21-PE59 ( RBCCW ) REF 18                              | H-17988 R24-S012-ESB-M97T REF 18 | G31-P001 RWCU DEMINERALIZER REF 35                            | H-17214 R24-S012-ESB-M97R REF 35  | H21-P155 SOL VLV FOR CNDS HOTWELL MAKE-UP, STOR TK & SURGE TK REF 9     | H-17226 R24-S012-ESB-M97G REF 9   |
| H21-P007 CRD TEMPERATURE RECORDER REF 27                              | H-17187 R24-S012-ESB-M97E REF 27 | H21-P023 RWCU SAMPLE RACK REF 24                              | H-17215 R24-S012-ESB-M97F REF 24  | H21-P003 CRD ACCUMULATOR LOW PRESS/ HIGH LEVEL ALMS & INDICATORS REF 37 | H-17188 R24-S012-ESB-M97AA REF 37 |
| R27-S001 DRIVE WTR PRESS THROTTLING CV C11-F003 CRD HYD SYSTEM REF 22 | H-17189 R24-S012-ESB-M97J REF 22 | C51-J001C CHANNEL C TIP DRIVE MECHANISM REF 29                | H-17196 R24-S012-ESB-M97C REF 29  | C51-J001A CHANNEL A TIP DRIVE MECHANISM REF 29                          | H-17196 R24-S012-ESB-M97A REF 29  |

R11-S040-ESB-M01

POWER PANEL  
120/208 DISTRIBUTION CABINET  
R25-S116



- NOTES:
- DELETED
  - ESSENTIAL MCC "1B" BREAKER 18C FEEDING THE MOTOR OPERATOR FOR VALVE B21-F021 IS LOCKED IN THE OPEN POSITION WHEN THE VALVE IS CLOSED, PREVENTING THE VALVE FROM BEING OPERATED ELECTRICALLY FOR HI-LOW PROTECTION PURPOSES.
  - DISTRIBUTION PANEL R25-S116 IS LOCATED IN FRAME 20B.
  - SYSTEMS T48,P42,H21,T47,G41,& C11 ARE AFFECTED BY POWER FROM BREAKER NO.22 ON R25-S116.
  - T47-B007A,B007B,B008A,B008B FAN #2.
  - T47-B009A,B009B FAN #2.
  - REFER TO THE MASTER FUSE LIST FOR FUSE DESIGN INFORMATION.
  - SEE MCC DATA SHEET B-17366 FOR MOTOR DATA.

\* - CONSTANT RATING FOR MAGNETIC- ONLY WITH ADJUSTABLE INSTANTANEOUS TRIP RANGE.

REFERENCE DWGS:  
FOR REFERENCE DRAWING LIST SEE DRAWING H-17011.

TABLE 1

| FRAME | CABLE (A)<br>R24-S012-ES4 | CABLE (B)<br>R24-S012-ES4 | CABLE (C)<br>R24-S012-ES4 | CABLE (D)<br>X-105C-ES4- | CABLE (E)         |
|-------|---------------------------|---------------------------|---------------------------|--------------------------|-------------------|
| 1A    | M01A                      | M01                       |                           |                          |                   |
| 1D    | M10A                      | M10                       |                           | M10                      | R27-S008-ES4-M10  |
| 2D    | M11B                      | M11A                      | M11                       |                          | R27-S009-ES4-M11  |
| 15AL  | M19                       | M19A                      |                           |                          |                   |
| 15BL  | M26A                      | M26                       |                           |                          | R24-S018-ES4-M04A |
| 18A   | M07                       |                           |                           | M07A                     |                   |
| 18B   | M08                       |                           |                           | M08                      |                   |
| 19A   | M09                       |                           |                           | M09                      |                   |
| 19B   | M15                       |                           |                           | M15A                     |                   |

BOUNDARY DIAGRAM NO.: 1R20-B01-19

FUNCTION(S) NO.: 1R20-01

PREPARED BY: MARK CRISLER  
DATE: 4/6/98

REVIEWED BY: RENEE RITCHEY  
DATE: 4/20/98

LICENSE RENEWAL DOCUMENT

MPL NO. R24 ACAD14 HL17017

**SOUTHERN COMPANY**

LICENSE RENEWAL SCREENING FOR INFORMATION ONLY

EDWIN I. HATCH NUCLEAR PLANT Unit No.1  
SINGLE LINE DIAGRAM  
REACTOR BUILDING  
600V AC ESSENTIAL MCC "1B" SH. 2 OF 2

Revision: A Date: 11-17-99  
APPROVED, ISSUED PER LICENSE RENEWAL BOUNDARY PACKAGES.  
DRAWING CREATED FROM H-17017, REV.29; BY ECB.

| DRWN | DESIGN | LOCATION | DOCUMENT NUMBER | REVISION |
|------|--------|----------|-----------------|----------|
| TRM  | LCF    |          |                 |          |
| DATE | SCALE  | 10-502   | HL-17017        | A        |
| BY   | CHK'D  | APPR'D   |                 |          |
| ECB  | OMC    | ASK      |                 |          |