

1. ALL EQUIPMENT AND INSTRUMENTS ARE PREFIXED BY SYSTEM NUMBER (C71) UNLESS OTHERWISE NOTED.
2. FOR LOCATION AND IDENTIFICATION OF INSTRUMENTS SEE INSTRUMENT DATA SHEET LISTED IN MPL FOR EACH INSTRUMENT.
3. TRIP CHANNELS FOR THE "TURBINE CONTROL VALVE FAST CLOSURE" TRIP SHALL BE DERIVED FROM THOSE EVENTS CAUSING FAST CLOSURE OF THE CONTROL VALVES.
4. ALL FUNCTIONAL CONTROL DIAGRAMS ARE SUPERCEDED BY ELECTRICAL ELEMENTARY DIAGRAMS.

REFERENCES:

TITLE	MPL NO.	DWG NO.
1. PIPING & INSTRUMENT SYMBOLS	A41-1010	S-15051
2. TURBINE/GENERATOR & STEAM BYPASS DESIGN SPEC.	A61-4020	SX-15896
3. REACTOR PROTECTION SYSTEM DESIGN SPEC.	C71-4010	S-15135
4. RESIDUAL HEAT REMOVAL SYSTEM P&ID SHEET 1	E11-1010	H-16329
5. RESIDUAL HEAT REMOVAL SYSTEM P&ID SHEET 2	E11-1010	H-16330
6. REACTOR PROTECTION SYSTEM C71 ELEMENTARY DIAGRAMS SHEETS 1-17	C71-1020	H-17783 THRU H-17882&H-17798
7. ANNUNCIATOR SIGNALS TO TSC I.E.D	X75-1010	H-16402

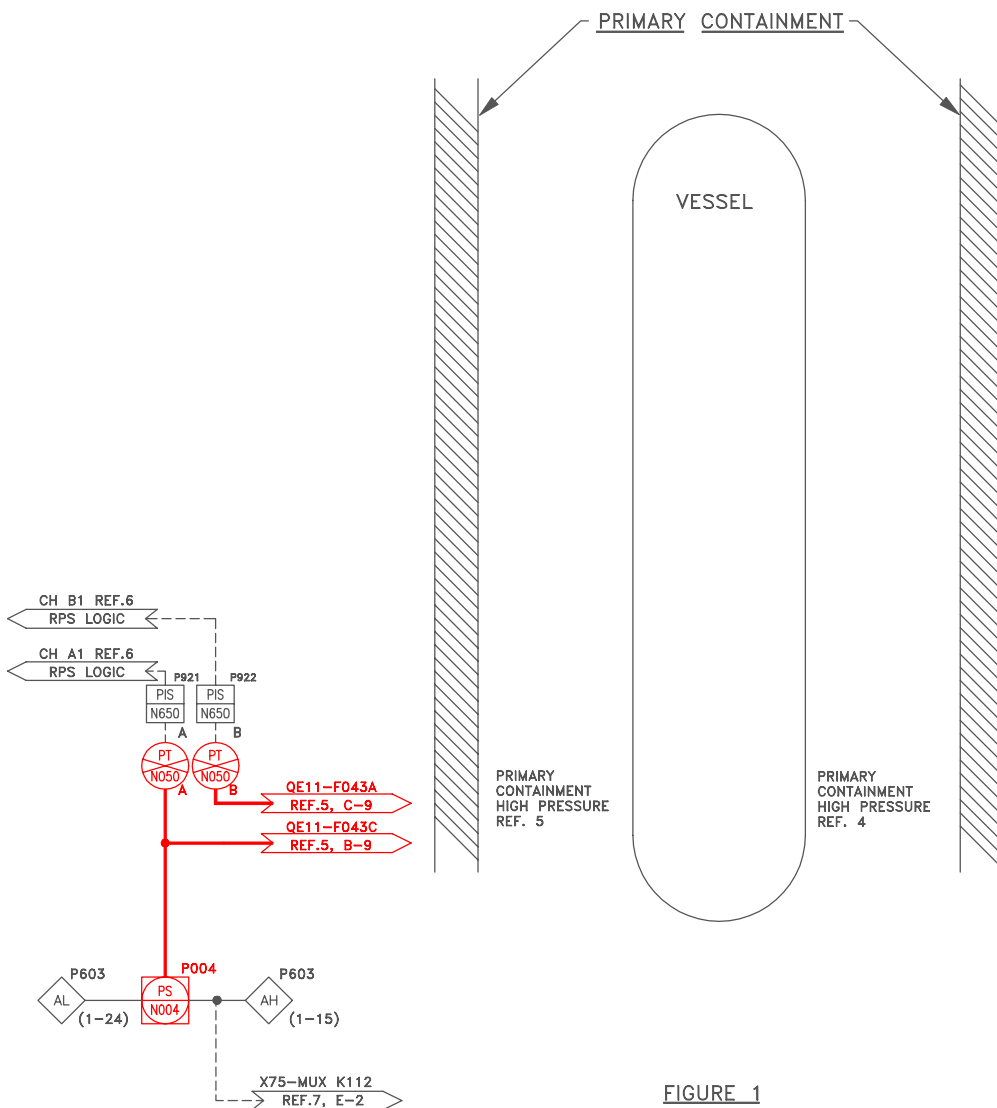


FIGURE 1

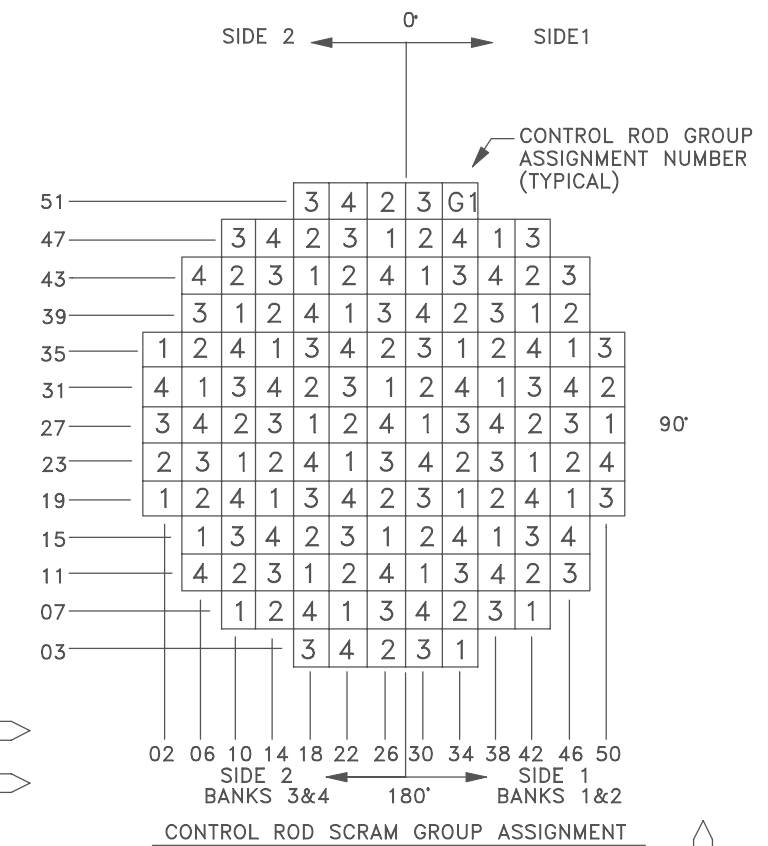


FIGURE 2  
(TOP VIEW OF CORE)

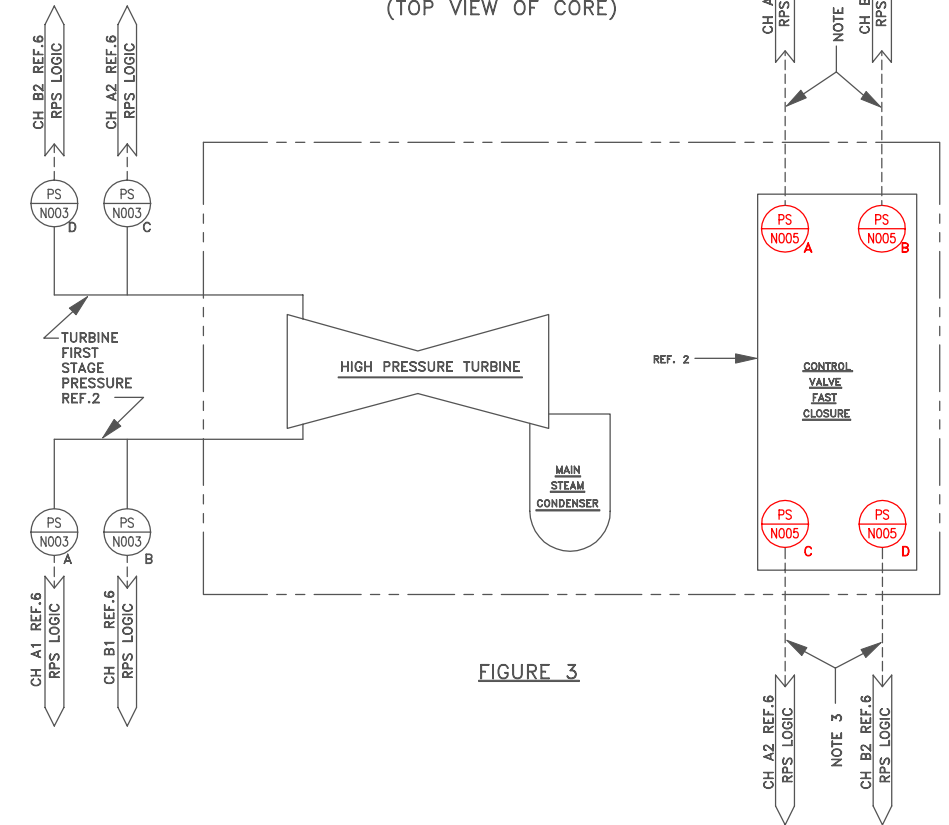


FIGURE 3

BOUNDARY DIAGRAM NO.: 1B21-B02-16  
 FUNCTION(S) NO.: 1T23-01  
 PREPARED BY: WILLIE JENNINGS  
 DATE: 7/15/98  
 REVIEWED BY: WILLIAM P EVANS  
 DATE: 7/16/98

LICENSE RENEWAL DOCUMENT

MPL NO. C71-1010 ACAD14 HL16568

**SOUTHERN COMPANY**

**LICENSE RENEWAL SCREENING FOR INFORMATION ONLY**

EDWIN I. HATCH NUCLEAR PLANT No.1  
 REACTOR PROTECTION SYSTEM  
 P & ID

Revision: A Date: 11-02-99  
 APPROVED. ISSUED PER LICENSE RENEWAL BOUNDARY PACKAGES. DRAWING CREATED FROM H-16568, REV.4; BY TRM.

DATE	BY	CHK'D	APP'D	LOCATION	DOCUMENT NUMBER	REVISION
TRM	RLM	ASK		None	10-502	HL-16568 A