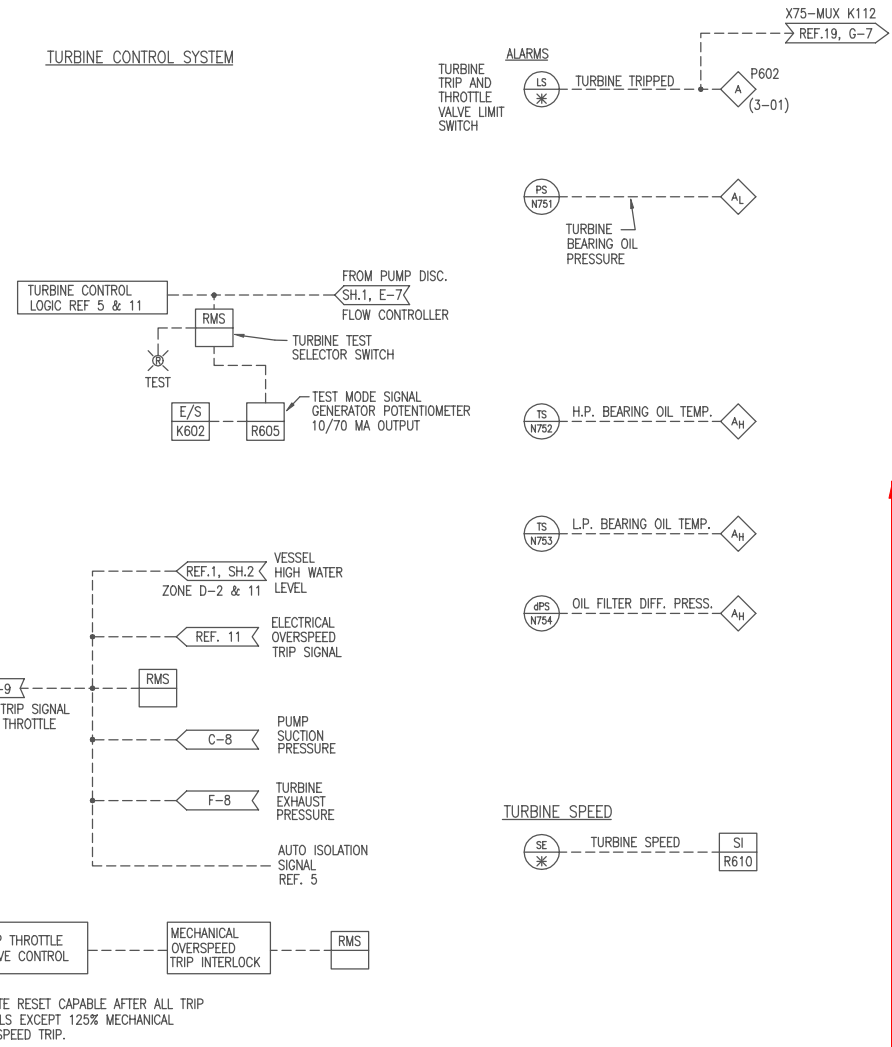


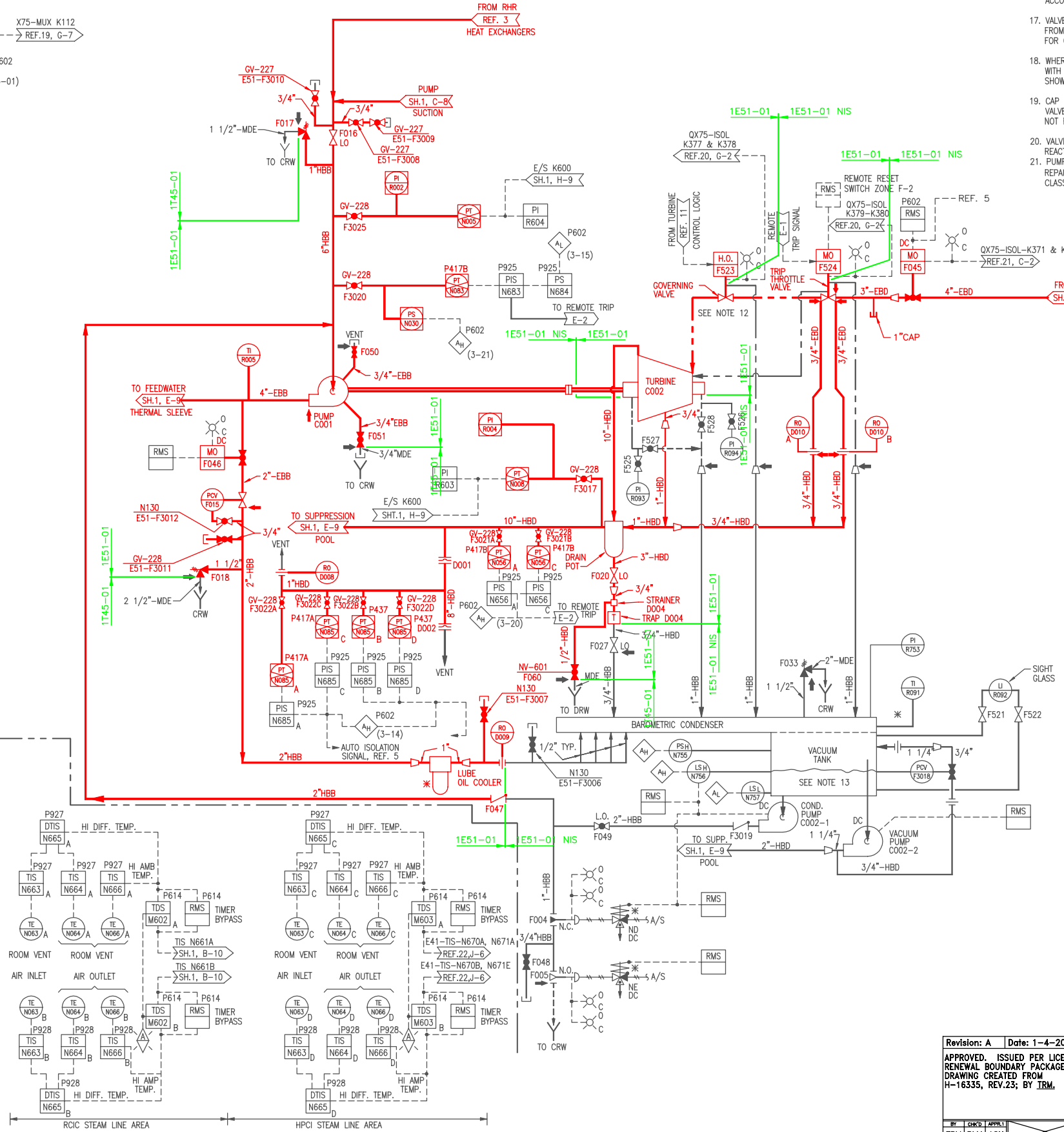
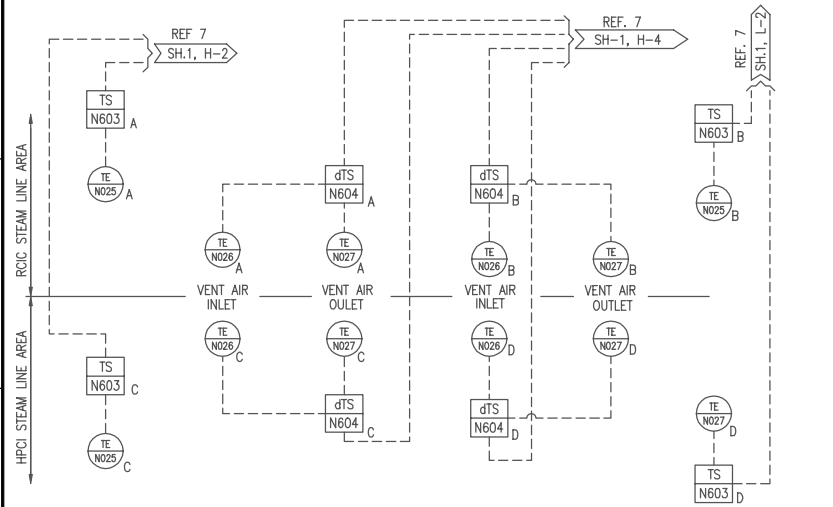
- 12. PIPING SHOWN IN PHANTOM LEADING TO TURBINE COO2 TO BE ARRANGED AND SUPPLIED BY TURBINE VENDOR.
- 13. THE BAROMETRIC CONDENSER AND VACUUM TANK SHALL BE LOCATED SUCH THAT ITS WATER LEVEL IS BELOW THE BOTTOM OF THE TURBINE EXHAUST FLANGE.
- 14.
- 15.
- 16. FLUSHING CONNECTIONS SHALL BE PROVIDED IN ACCORDANCE WITH MPL ITEM NO. A61-4020 SEC 9. TEMPORARY STRAINER SCREENS SHALL BE PROVIDED ON THE SUCTION SIDE OF ALL PUMPS IN ACCORDANCE WITH MPL ITEM NO. A61-4020 SEC 9.
- 17. VALVE AO-F003 SHALL BE LOCATED A MAXIMUM OF SIX FEET FROM THE NOZZLE OF THE TORUS, WITH ADEQUATE CLEARANCES FOR OPERATION OF THE VALVE AND VALVE OPERATOR.
- 18. WHERE G.V.-NUMBERS ARE SHOWN, THE VALVES ARE TAGGED WITH THESE NUMBERS WHERE G.V.-NUMBERS ARE NOT SHOWN, THE VALVES ARE TAGGED WITH THE MPL NUMBER.
- 19. CAP THIS LINE AT TORUS AND TURBINE EXHAUST LINE UNTIL VALVES F102, F103, F104 AND F105 ARE DELIVERED. LINE IS NOT REQUIRED FOR PLANT START-UP.
- 20. VALVES F104 AND F105 AUTO CLOSE ON COMBINATION OF REACTOR LOW PRESSURE AND HIGH DRYWELL PRESSURE.
- 21. PUMP SEAL WATER PIPING FABRICATED BY PUMP VENDOR. ANY REPAIRS TO THE 1/2" PUMP SEAL WATER PIPING SHALL BE PIPE CLASS EBB.

TURBINE SUPERVISORY INSTRUMENTATION

TURBINE CONTROL SYSTEM



SUPPRESSION POOL AREA LEAK DETECTION SYS (SEE REF 6)



BOUNDARY DIAGRAM NO.: 1E51-B01-02
FUNCTION(S) NO.: 1E51-01
PREPARED BY: WAYNE LUNCFORD
DATE: 5/8/98
REVIEWED BY: WILLIAM P EVANS
DATE: 5/8/98

LICENSE RENEWAL DOCUMENT
 MPL NO. E51-1010 ACAD14 HL16335
SOUTHERN COMPANY
LICENSE RENEWAL SCREENING FOR INFORMATION ONLY
 EDWIN I. HATCH NUCLEAR PLANT UNIT No.1
 RCIC SYSTEM P&ID SHEET NO.2

Revision: A Date: 1-4-2000
 APPROVED, ISSUED PER LICENSE RENEWAL BOUNDARY PACKAGES. DRAWING CREATED FROM H-16335, REV.23; BY IRM.

DATE	SCALE	LOCATION	DOCUMENT NUMBER	REVISION
10-502	None		HL-16335	A