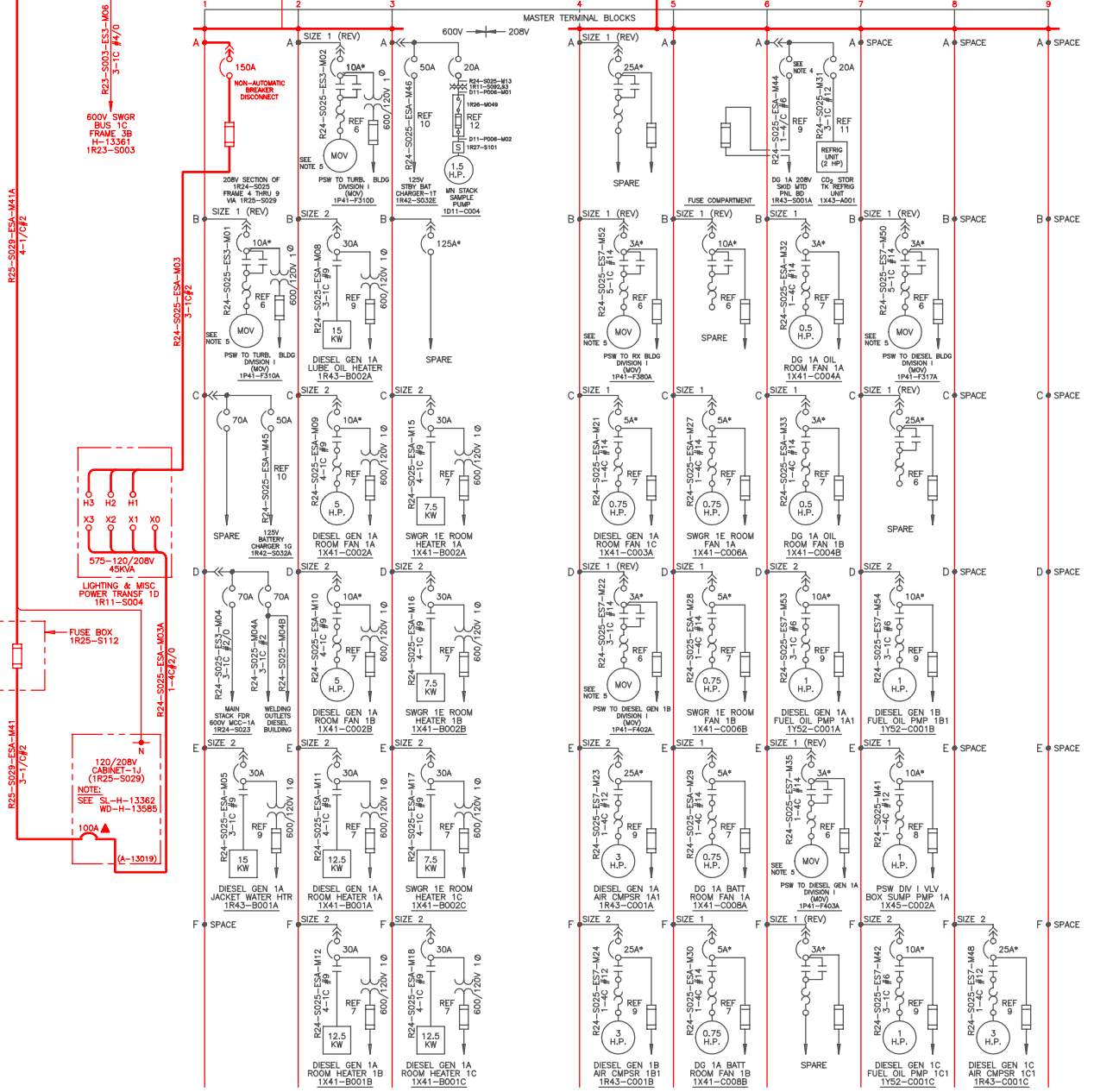


130' DIESEL BUILDING - 1E SWITCHGEAR ROOM
600/208V MCC-1A(1R24-S025)



- NOTES:**
1. CONTINUOUS RATING FOR MAGNETIC BREAKER WITH ADJUSTABLE INSTANTANEOUS TRIP RANGE.
 2. REPLACED 100A EH FRAME CIRCUIT BREAKER WITH 100A EH FRAME MOLDED CASE SWITCH (NON-AUTOMATIC).
 3. REFER TO THE MASTER FUSE LIST FOR FUSE DESIGN INFORMATION.
 4. REPLACED 100A F FRAME CIRCUIT BREAKER WITH 150A F FRAME MOLDED CASE SWITCH (NON-AUTOMATIC BREAKER).
 5. SEE MCC DATA SHEET B-13057 FOR MOTOR DATA.

- REFERENCES:**
- 1.B-13033 FRONT VIEW CLASS-1E 600/208V MCC-1A 1R24-S025
 - 2.B-13057 EQUIPMENT LIST CLASS-1E 600/208V MCC-1A 1R24-S025
 - 3.H-14150-1 WIRING DIAGRAM CLASS-1E H-14152 600/208V MCC-1A 1R24-S025
 - 4.S-13908-1 MCC LAYOUT OF STARTER S-13909 AND BREAKERS 1R24-S025
 - 5.S-13929-1 WIRING DIAGRAM CIRCUIT BREAKER AND STARTERS S-13944
 - 6.H-13388 ELEMENTARY DIAGRAM PLANT SERVICE WATER MOVES
 - 7.H-13395 ELEMENTARY DIAGRAM DIESEL GENERATOR 1A HEATING AND VENTILATION
 - 8.H-13579 MISCLENEOUS PUMP VALVES AND EQUIPMENT
 - 9.H-13584 ELEMENTARY DIAGRAM DIESEL MISCLENEOUS EQUIPMENT
 - 10.H-13611 WIRING DIAGRAM DIESEL BUILDING METRING PANELS AND CHARGERS
 - 11.H-14191 ELEMENTARY DIAGRAM FIRE PROTECTION SYSTEM DIESEL BUILDING
 - 12.H-19661 ELEMENTARY DIAGRAM POST MONITORING SYSTEM D11
 - 13.SX-13153 WIRING DIAGRAM CLASS-1E 600/208V MCC-1A 1R24-S025 (SUPERSEDED BY H-14150)
 - 14.SX-13154-1 WIRING DIAGRAM CLASS-1E SX-13155 600/208V MCC-1A 1R24-S025
 - 15.A-10134 LOAD LIST FOR MCC 1R24-S025

BOUNDARY DIAGRAM NO.: 1R20-B01-12
FUNCTION(S) NO.: 1R20-01
PREPARED BY: MARK CRISLER
DATE: 4/6/98
REVIEWED BY: RENEE RITCHEY
DATE: 4/20/98

LICENSE RENEWAL DOCUMENT

MPL NO. 1R24 ACAD14 HL13647

SOUTHERN COMPANY

LICENSE RENEWAL SCREENING FOR INFORMATION ONLY

Revisions: A Date: 11-12-99
 APPROVED. ISSUED PER LICENSE RENEWAL BOUNDARY PACKAGES. DRAWING CREATED FROM H-13647, REV.25, BY: JBL

EDWIN I. HATCH NUCLEAR PLANT UNIT No. 1
 SINGLE LINE DIAGRAM - DIESEL BUILDING
 600-208V MCC-1A
 MPL 1R24-S025

DATE	DESCRIPTION	LOCATION	REVISION NUMBER	BY
10-502	None	HL-13647	A	