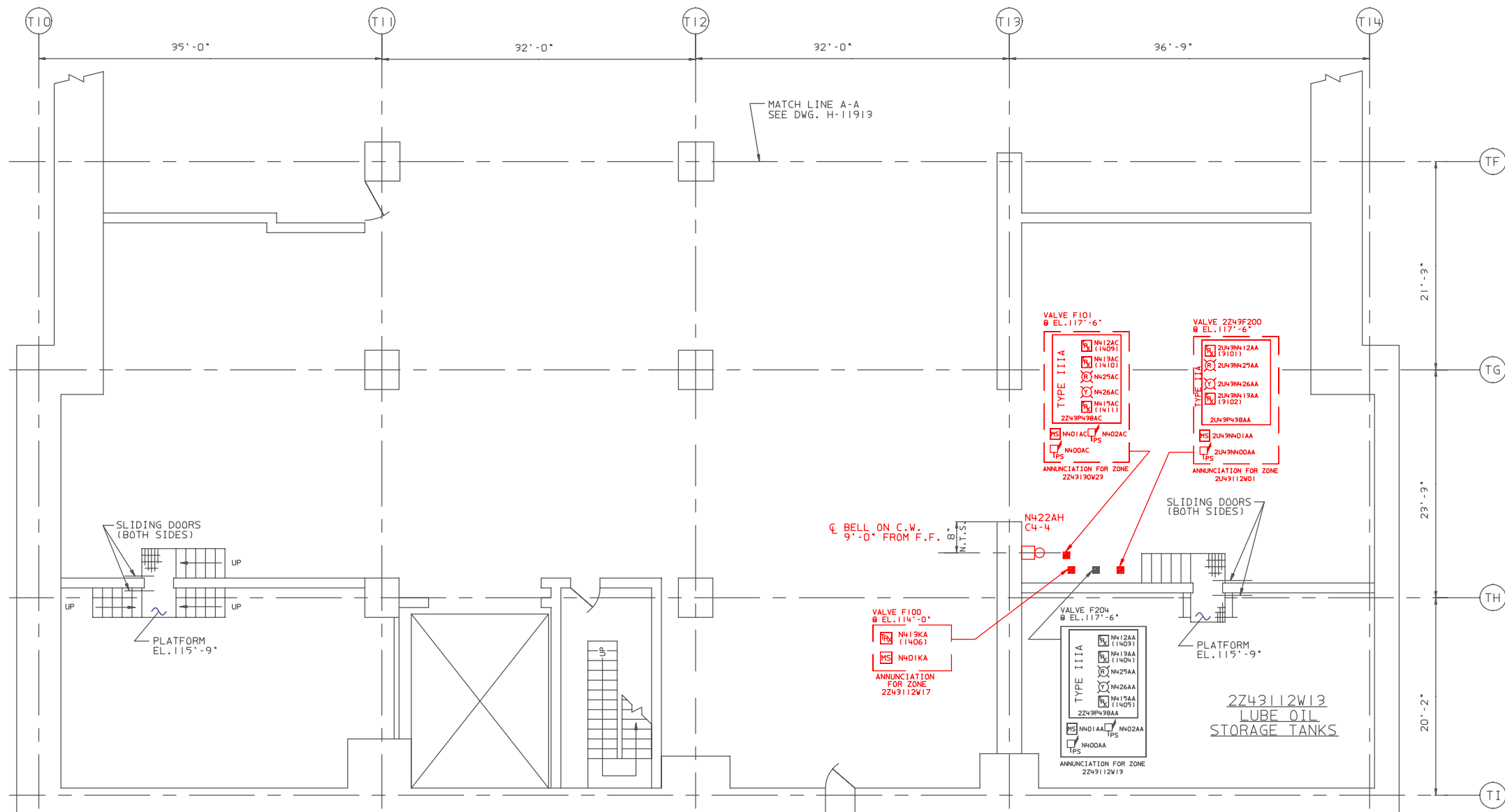


KEY PLAN



- NOTES:**
1. UNLESS OTHERWISE NOTED, ALL MPL NUMBERS SHALL BE PREFIXED BY 2243.
 2. UNIT 2 DEVICES SHOWN, FOR UNIT 1 DEVICES SEE DWG. H-11881.
 3. FOR GENERAL NOTES AND LEGEND SEE DWG. H-11866.
 4. FOR HOSE STATION AND EXTINGUISHER LOCATIONS, SEE FHA DWG. H-11812.

- REFERENCES:**
- H-11904 FIRE PROTECTION P&ID SHEETS 1 & 6 OF 10
 - H-11812 FIRE HAZARDS ANALYSIS.
 - H-12626 ARCH. TURB. & CONTROL BLDG. GENERAL PLAN EL. 112'-0"
 - H-12627 ARCH. TURB. & CONTROL BLDG. DETAILED FLOOR PLAN EL. 112'-0"
 - S-51109 REV A FIRE PROTECTION MULTIPLEX SYSTEM O & M MANUAL
 - S-51110 MULTIPLEX RTU MOUNTING DETAILS
 - S-51111 MULTIPLEX RTU INTERNAL WIRING DIAGRAMS

BOUNDARY DIAGRAM NO.: 2X43-B06-19
FUNCTION(S) NO.: 2X43-06
PREPARED BY: M. D. STEPHENS
DATE: 03-19-98
REVIEWED BY: ALEX MORRISON
DATE: 07-15-98

LICENSE RENEWAL DOCUMENT

Revision: A		Date: 12-22-99	
APPROVED, ISSUED PER LICENSE RENEWAL BOUNDARY PACKAGES EQUIPMENT LAYOUT DRAWINGS DRAWING CREATED FROM H11914, REV. 1; BY ECB			
		ACAD14 HL11914	
LICENSE RENEWAL SCREENING FOR INFORMATION ONLY			
EDWIN I. HATCH NUCLEAR PLANT Unit No.2 FIRE DETECTION/SUPPRESSION MULTIPLEX SYS. 2243 CONTROL BLDG. EL. 112'-0"			
DATE	SCALE	DOCUMENT NUMBER	REVISION
3/16"=1'-0"	10-502	HL-11914	A