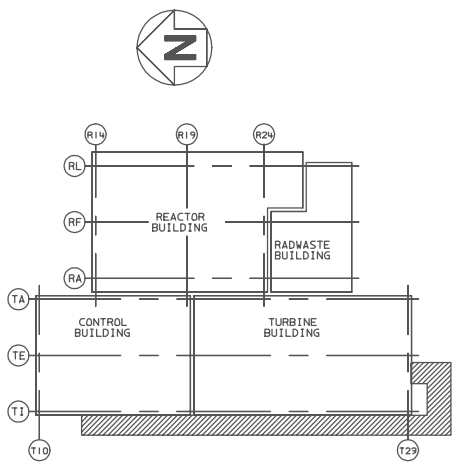
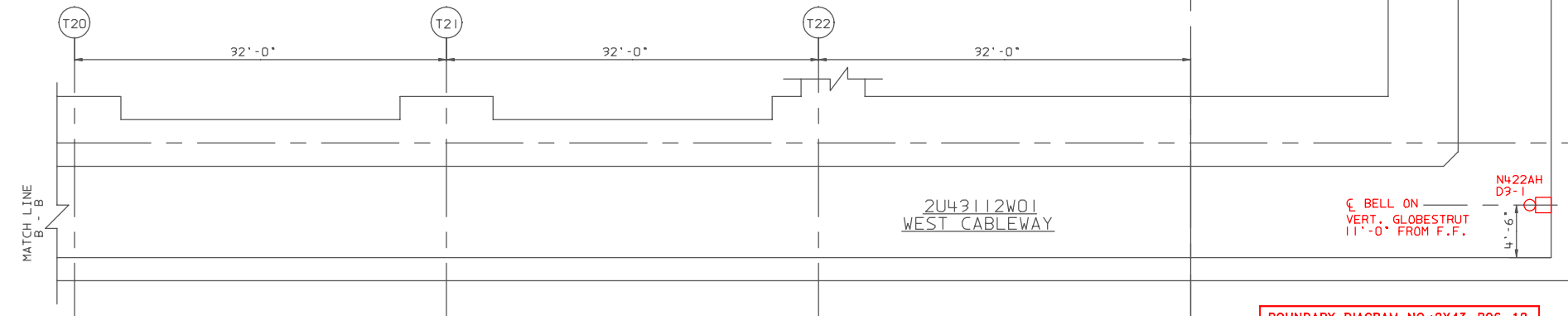
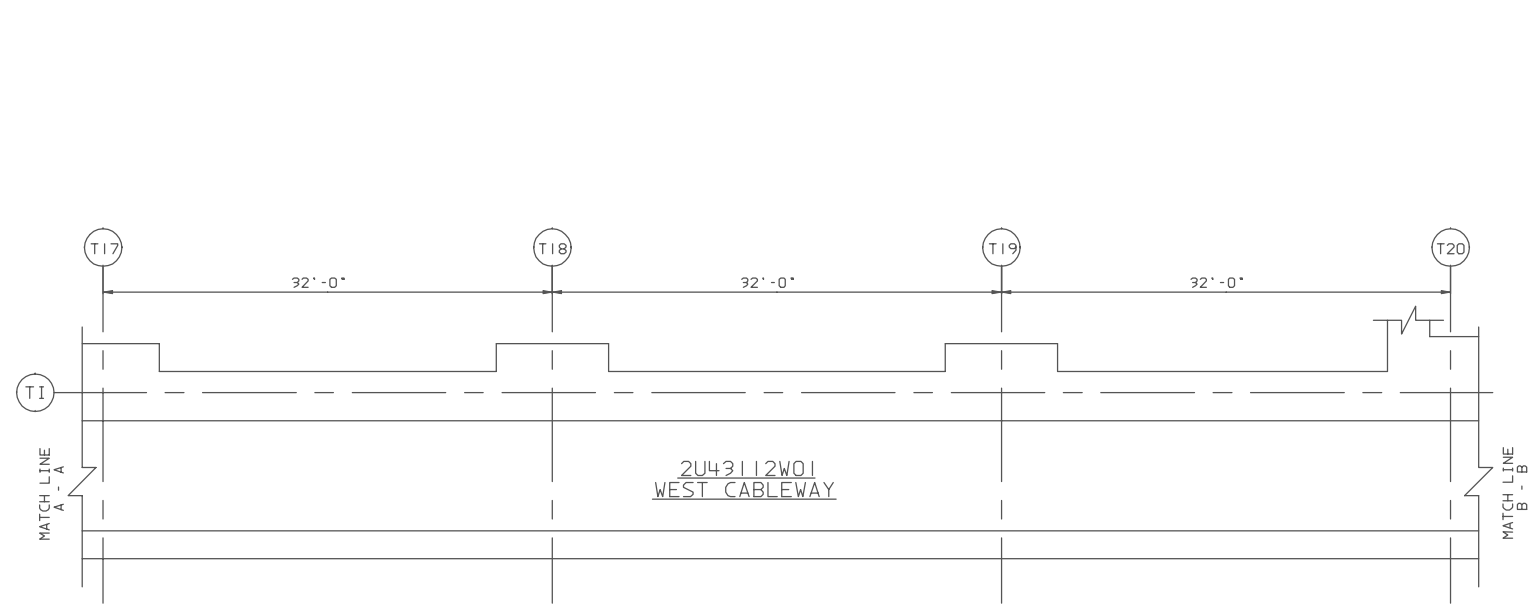
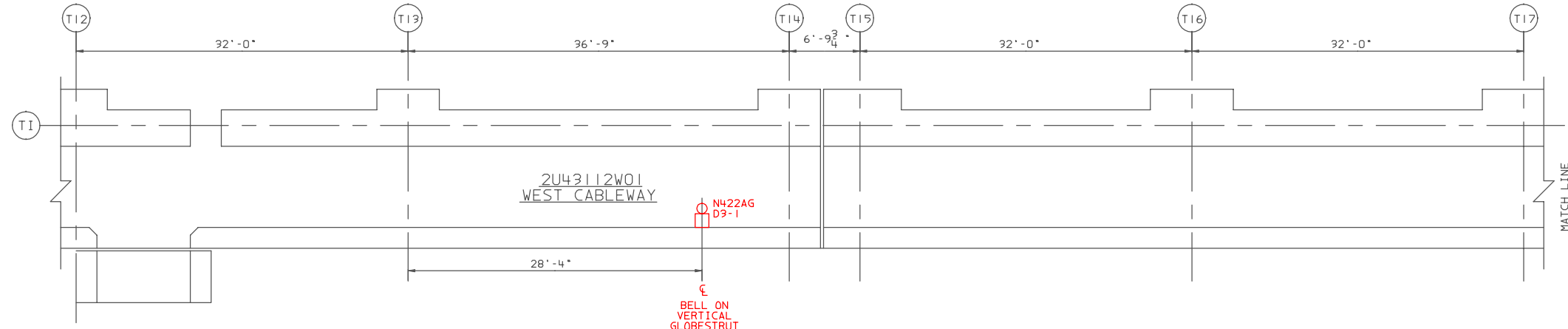


A  
B  
C  
D  
E  
F  
G  
H  
J



- NOTES:
1. UNLESS OTHERWISE NOTED, ALL MPL NUMBERS SHALL BE PREFIXED BY 2U43.
  2. FOR GENERAL NOTES AND LEGEND SEE DWG. H-11866.

- REFERENCES:
- H-25985 ACCESS CONTROL FLOOR PLAN EL. 87'-0"
  - S-51109 REV. A FIRE PROTECTION MULTIPLEX SYSTEM O&M MANUAL
  - S-51110 MULTIPLEX MOUNTING DETAILS
  - S-51111 MULTIPLEX RTU INTERNAL WIRING DIAGRAMS

BOUNDARY DIAGRAM NO.: 2X43-806-12  
 FUNCTION(S) NO.: 2X43-06  
 PREPARED BY: M. D. STEPHENS  
 DATE: 03-19-98  
 REVIEWED BY: ALEX MORRISON  
 DATE: 07-15-98

Revision: A Date: 12-22-99  
 APPROVED, ISSUED PER LICENSE RENEWAL BOUNDARY PACKAGES. DRAWING CREATED FROM H-11912, REV. 1; BY ECB

|     |       |       |
|-----|-------|-------|
| BY  | CHK'D | APPR. |
| ECB | MDS   | ASK   |

LICENSE RENEWAL DOCUMENT

ACAD14 HL11912

**SOUTHERN COMPANY**

**LICENSE RENEWAL SCREENING FOR INFORMATION ONLY**

EDWIN I. HATCH NUCLEAR PLANT UNIT No.2  
 EQUIPMENT LAYOUT DRAWINGS.  
 FIRE DETECTION/SUPPRESSION MULTIPLEX  
 SYS. 2U43 WEST CABLEWAY EL. 112'-0"

| DATE    | DESIGNED | LOCATION | DOCUMENT NUMBER | REVISION |
|---------|----------|----------|-----------------|----------|
| 3/16/98 | LCF      | SCALE    | 10-502          | HL-11912 |
|         |          |          |                 | A        |