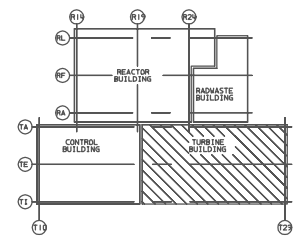
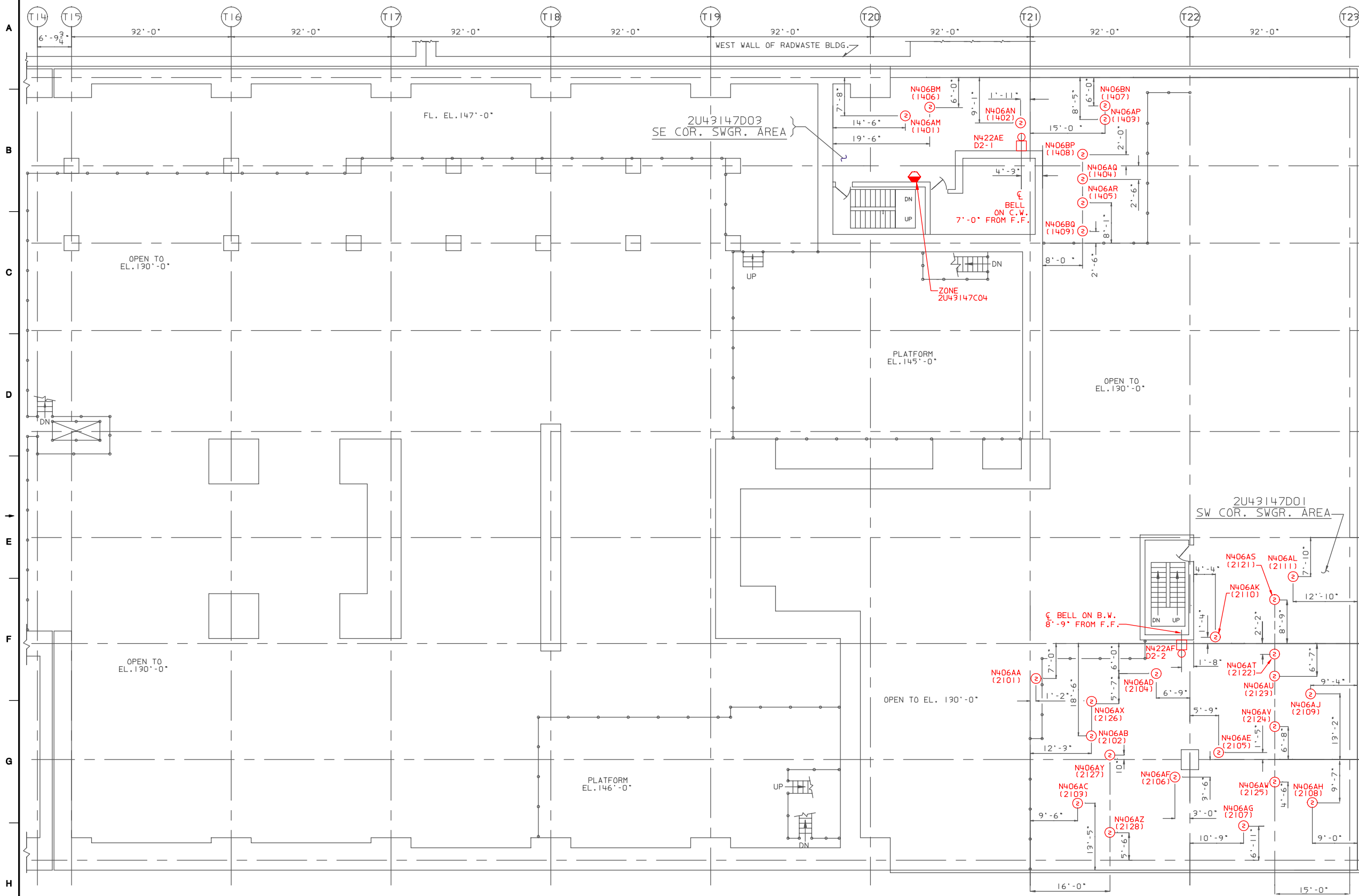


01611-7H



KEY PLAN



- NOTES:
- 1. UNLESS OTHERWISE NOTED, ALL MPL NUMBERS SHALL BE PREFIXED BY 2U43.
 - 2. FOR GENERAL NOTES AND LEGEND SEE DWG. H-11866
 - 3. FOR HOSE STATION AND EXTINGUISHER LOCATIONS, SEE FHA DWG. H-11822.

- REFERENCES:
- H-11822 FIRE HAZARDS ANALYSIS
 - H-22806 ARCH. TURB. BLDG. FL. PLAN EL. 147'-0" SH. 1
 - H-22807 ARCH. TURB. BLDG. FL. PLAN EL. 147'-0" SH. 2
 - H-29087 CONDUIT PLAN, TURB. BLDG. EL. 147'-0" COLUMNS T19-T23 & TA-TE
 - H-29089 CONDUIT PLAN, TURB. BLDG. EL. 147'-0" COLUMNS T19-T23 & TF-TI
 - S-51109 REV. A FIRE PROT MULTIPLEX SYSTEM O&M MANUAL
 - S-51110 MULTIPLEX MOUNTING DETAILS
 - S-51111 MULTIPLEX RTU INTERNAL WIRING DIAGRAMS

LICENSE RENEWAL DOCUMENT

BOUNDARY DIAGRAM NO.: 2X43-B06-15
 FUNCTION(S) NO.: 2X43-06
 PREPARED BY: M. D. STEPHENS
 DATE: 03-19-98
 REVIEWED BY: ALEX MORRISON
 DATE: 07-15-98

Revision: A Date: 12-22-99
 APPROVED, ISSUED PER LICENSE RENEWAL BOUNDARY PACKAGES. DRAWING CREATED FROM H-11910, REV. 1; BY ECB

BY	CHKD	APPR	DATE
ECB	MDS	ASK	

SOUTHERN COMPANY			
LICENSE RENEWAL SCREENING FOR INFORMATION ONLY			
EDWIN I. HATCH NUCLEAR PLANT UNIT No.2 EQUIPMENT LAYOUT DRAWINGS. FIRE DETECTION/SUPPRESSION MULTIPLEX SYS. 2U43 TURBINE BLDG. EL. 147'-0"			
DRAWN	DESIGNED	LOCATION	DOCUMENT NUMBER
ECB	LCF		10-502
DATE	SCALE		HL-11910
	1/8"=1'-0"		A

ACAD14 HL11910