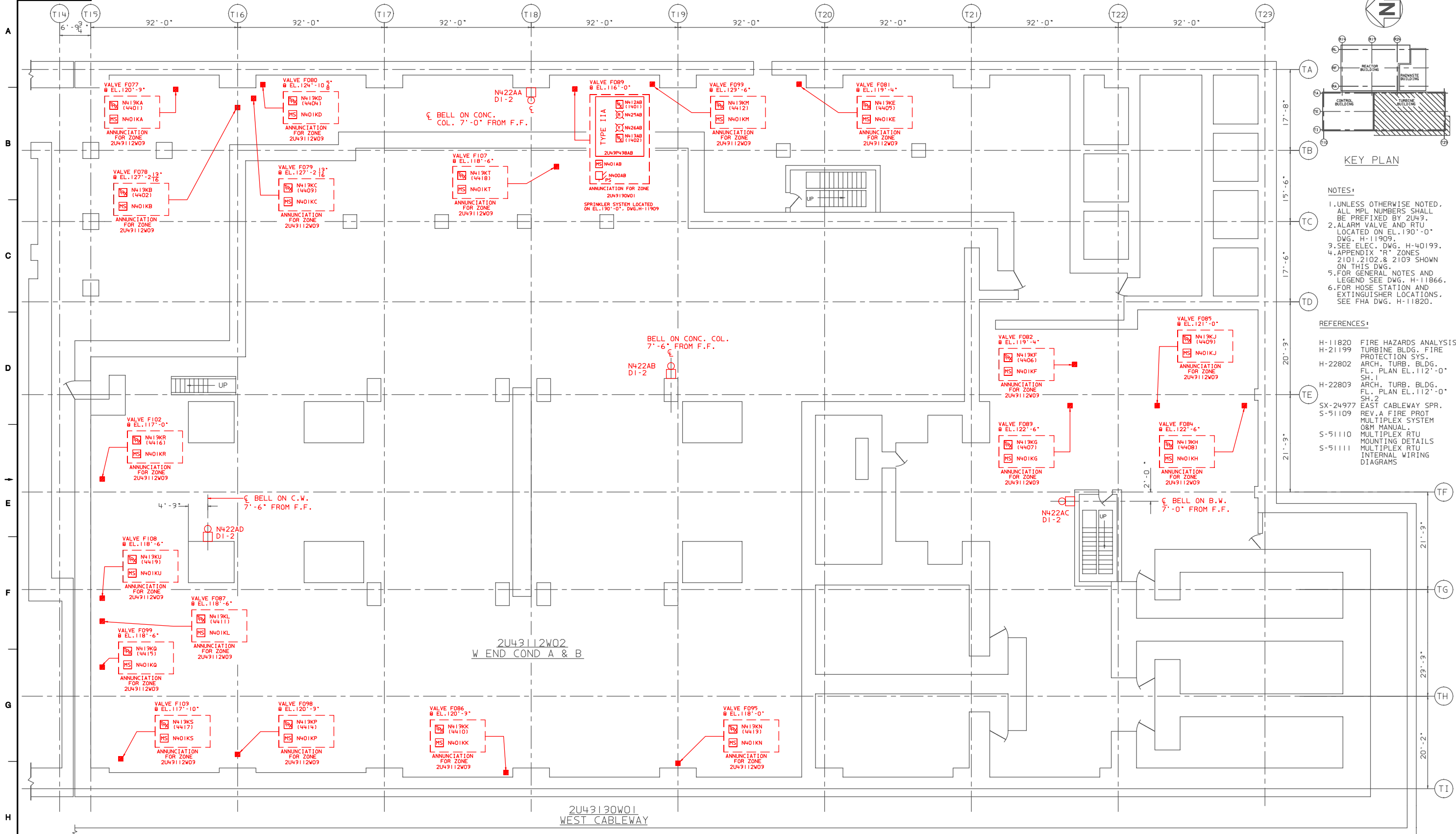


- NOTES:
- UNLESS OTHERWISE NOTED, ALL MPL NUMBERS SHALL BE PREFIXED BY 2U43.
 - ALARM VALVE AND RTU LOCATED ON EL. 130'-0" DWG. H-11909.
 - SEE ELEC. DWG. H-40193.
 - APPENDIX "R" ZONES 2101, 2102, & 2103 SHOWN ON THIS DWG.
 - FOR GENERAL NOTES AND LEGEND SEE DWG. H-11866.
 - FOR HOSE STATION AND EXTINGUISHER LOCATIONS, SEE FHA DWG. H-11820.

- REFERENCES:
- H-11820 FIRE HAZARDS ANALYSIS.
 - H-21199 TURBINE BLDG. FIRE PROTECTION SYS.
 - H-22802 ARCH. TURB. BLDG. FL. PLAN EL. 112'-0" SH. 1
 - H-22803 ARCH. TURB. BLDG. FL. PLAN EL. 112'-0" SH. 2
 - SX-24977 REV. A FIRE PROT. MULTIPLEX SYSTEM O&M MANUAL.
 - S-5110 MULTIPLEX RTU MOUNTING DETAILS
 - S-5111 MULTIPLEX RTU INTERNAL WIRING DIAGRAMS



BOUNDARY DIAGRAM NO.: 2X43-B06-13
 FUNCTION(S) NO.: 2X43-06
 PREPARED BY: M. D. STEPHENS
 DATE: 03-19-98
 REVIEWED BY: ALEX MORRISON
 DATE: 07-15-98

Revision: A Date: 12-22-99
 APPROVED, ISSUED PER LICENSE RENEWAL BOUNDARY PACKAGES EQUIPMENT LAYOUT DRAWINGS DRAWING CREATED FROM H-11908, REV. 1; BY ECB

ACAD14 HL11908

SOUTHERN COMPANY

LICENSE RENEWAL SCREENING FOR INFORMATION ONLY

EDWIN I. HATCH NUCLEAR PLANT No.2
 EQUIPMENT LAYOUT DRAWINGS
 FIRE DETECTION/SUPPRESSION MULTIPLEX
 SYS. 2U43 TURBINE BLDG. EL. 112'-0"

DATE	BY	DESCRIPTION	LOCATION	DOCUMENT NUMBER	REVISION
12-22-99	ECB	LCF	10-502	HL-11908	A