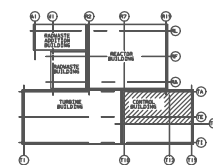


VALVE F301A
EL. 127'-6"
N4130F (9229)
N4101F

ANNUNCIATION
FOR ZONE
1243112416



KEY PLAN

NOTES:

1. UNLESS OTHERWISE NOTED, ALL MPL NUMBERS SHALL BE PREFIXED BY 1243.
2. ALL UNIT 1 BELLS SHOWN; UNIT 2 BELLS MOUNTED ADJACENT. SEE DWG H-11919 FOR UNIT 2 DEVICES.
3. FOR HOSE STATION AND EXTINGUISHER LOCATIONS, SEE FHA DWG H-11881.

REFERENCES:

- H-11904 FIRE PROTECTION P&ID SHEETS 1 & 6 OF 10
- H-11811 FIRE HAZARDS ANALYSIS.
- H-12626 ARCH. TURB. & CONTROL BLDG. GENERAL PLAN EL. 112'-0"
- H-12627 ARCH. TURB. & CONTROL BLDG. DETAILED FLOOR PLAN EL. 112'-0"
- S-51109 REV A FIRE PROTECTION MULTIPLEX SYSTEM O & M MANUAL
- S-51110 MULTIPLEX RTU MOUNTING DETAILS
- S-51111 MULTIPLEX RTU INTERNAL WIRING DIAGRAMS

BOUNDARY DIAGRAM NO.: 1X43-B06-18
 FUNCTION(S) NO.: 1X43-06
 PREPARED BY: M. D. STEPHENS
 DATE: 03-19-98
 REVIEWED BY: ALEX MORRISON
 DATE: 07-15-98

LICENSE RENEWAL DOCUMENT

ACAD14 HL11880



LICENSE RENEWAL SCREENING FOR INFORMATION ONLY

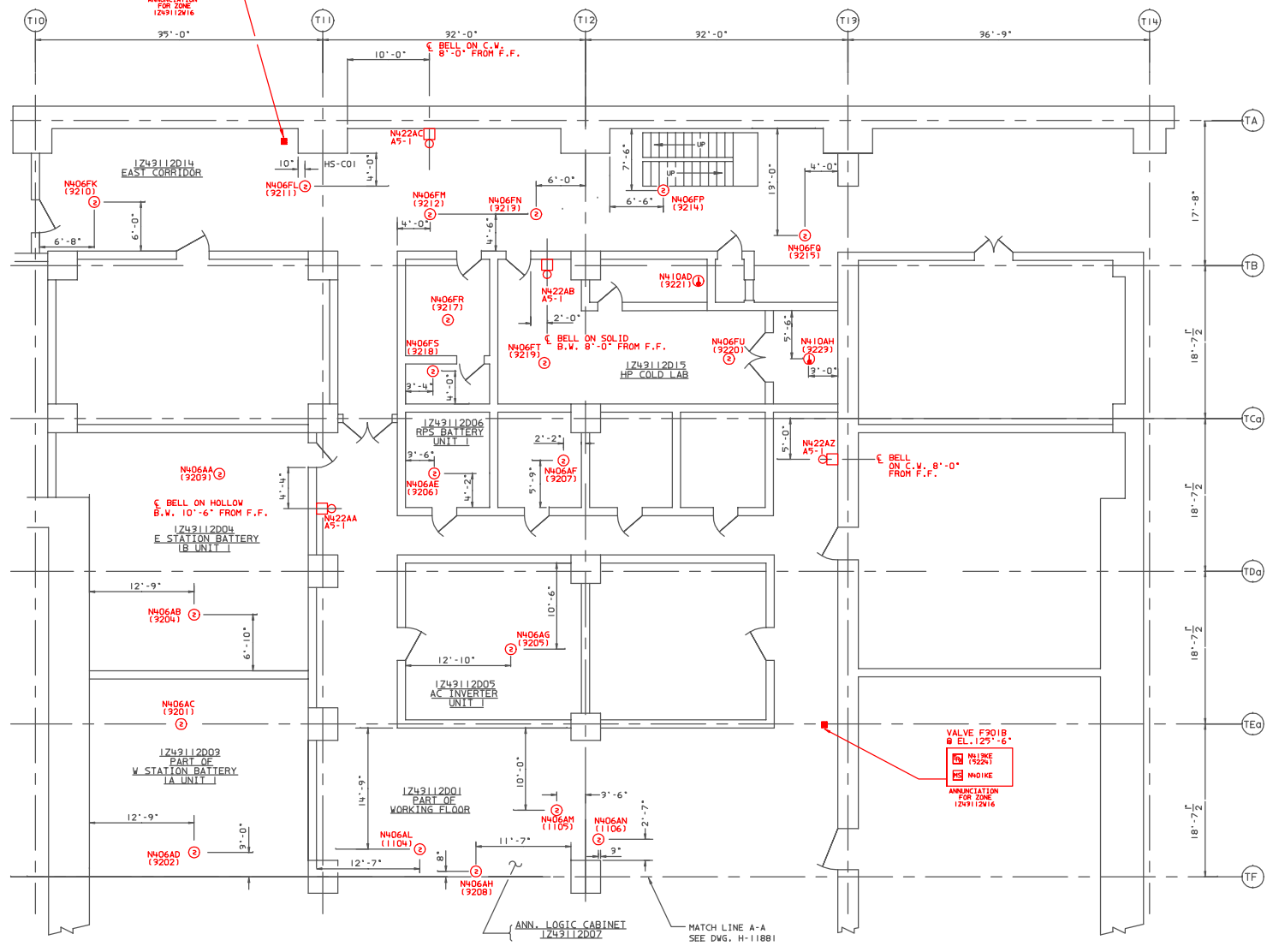
EDWIN I. HATCH NUCLEAR PLANT UNIT No.1
EQUIPMENT LAYOUT DRAWINGS
FIRE DETECTION/SUPPRESSION MULTIPLEX
SYS. 1243 CONTROL BLDG. EL. 112'-0"

Revisions: A Date: 12-22-99
APPROVED, ISSUED PER LICENSE RENEWAL BOUNDARY PACKAGES. DRAWING CREATED FROM H-11880, REV. 1; BY ECB

NO.	DATE	BY	REASON
1	12/22/99	ASK	ISSUED PER LICENSE RENEWAL BOUNDARY PACKAGES.

FORM	REVISION	LOCATION	EQUIPMENT NUMBER	RECORD
10-502	HL-11880			A

DATE	12/16/99
BY	ASK



MATCH LINE A-A
SEE DWG. H-11881

ANN. LOGIC CABINET
124311207