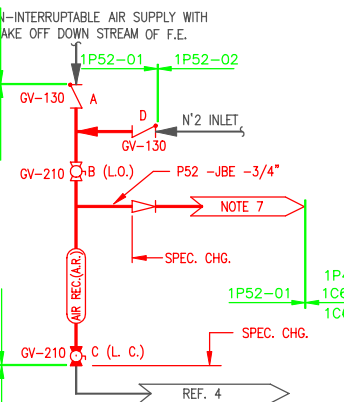
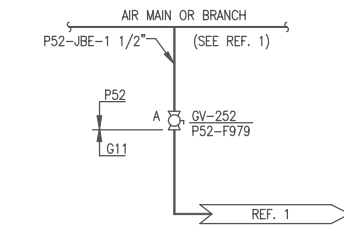


DETAIL NO. 1
TWO VALVES SUPPLIED BY SINGLE AIR RECEIVER EXCEPT AS SHOWN ALL PIPE P52-JBE-1" (SEE NOTE 8)



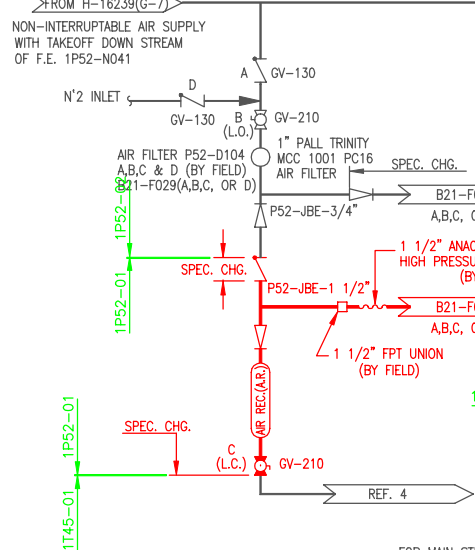
DETAIL NO. 2
SINGLE VALVE SUPPLIED BY SINGLE AIR RECEIVER EXCEPT AS SHOWN ALL PIPE P52-JBE-1" (SEE NOTE 8)



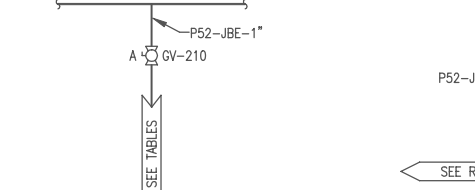
DETAIL NO. 3
INTERRUPTIBLE SERVICE VALVE CONNECTIONS (SEE NOTE 8)

DETAIL NO. 5
DELETED

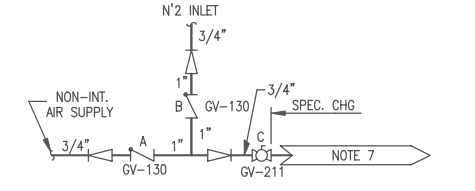
DETAIL NO. 6
DELETED



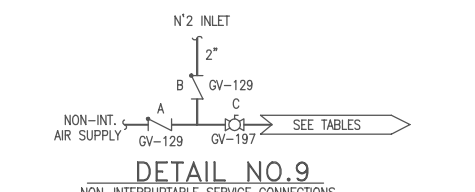
DETAIL NO. 4
FOR MAIN STEAM ISOLATION VALVES B21-F028 (A,B,C, & D); 30 TO 35 PSIG AIR SUPPLY TO C11-F002A & B; AND 70 TO 75 PSIG AIR SUPPLY TO C11-F010A & B AND F011



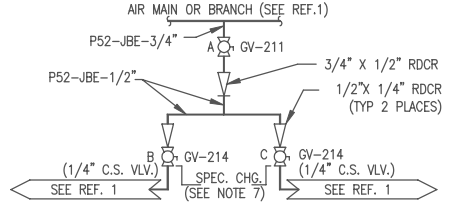
DETAIL NO. 7
INTERRUPTIBLE SERVICE CONNECTION (SEE NOTE 8)



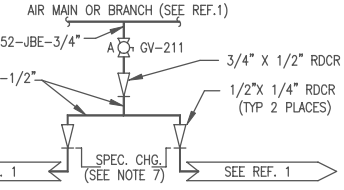
DETAIL NO. 8
NON-INTERRUPTIBLE SERVICE CONNECTION (SEE NOTE 8)



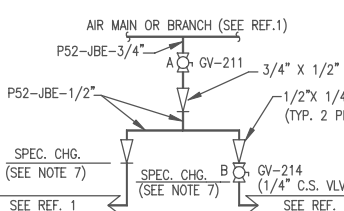
DETAIL NO. 9
NON-INTERRUPTIBLE SERVICE CONNECTIONS (SEE NOTE 8)



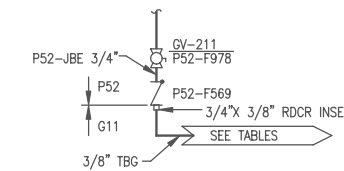
DETAIL NO. 10
INTERRUPTIBLE SERVICE VALVE CONNECTIONS (SEE NOTE 8)



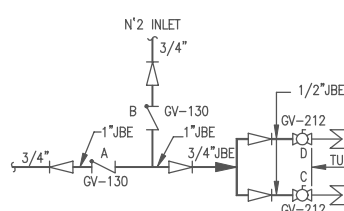
DETAIL NO. 11
INTERRUPTIBLE SERVICE VALVE CONNECTIONS (SEE NOTE 8)



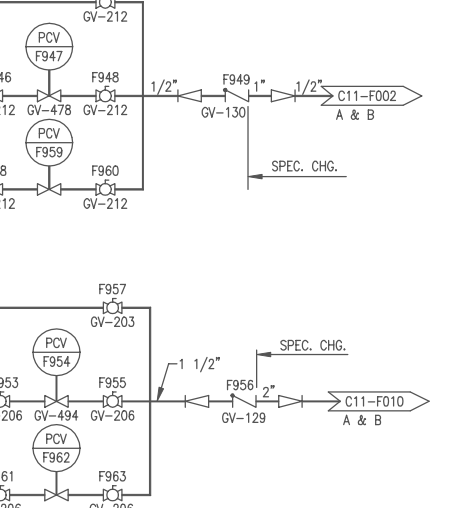
DETAIL NO. 12
INTERRUPTIBLE SERVICE VALVE CONNECTIONS (SEE NOTE 8)



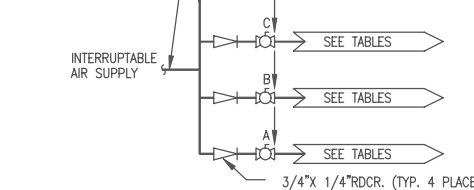
DETAIL NO. 13
INTERRUPTIBLE SERVICE VALVE CONNECTIONS (SEE NOTE 8)



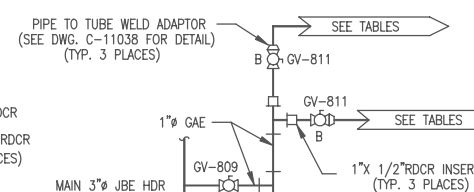
DETAIL NO. 14
NON-INTERRUPTIBLE SERVICE CONNECTION (SEE NOTE 8)



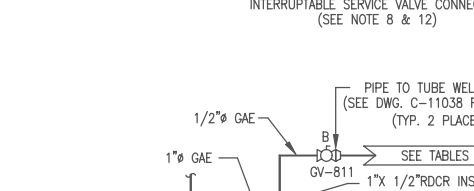
DETAIL NO. 15
INTERRUPTIBLE SERVICE VALVE CONNECTIONS (SEE NOTE 8)



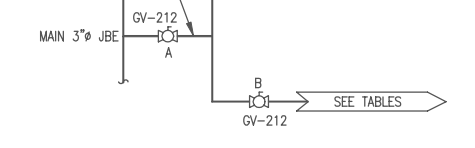
DETAIL NO. 16
INTERRUPTIBLE SERVICE VALVE CONNECTIONS (SEE NOTE 8 & 12)



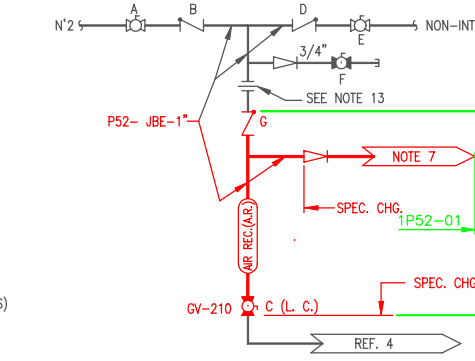
DETAIL NO. 17
INTERRUPTIBLE SERVICE VALVE CONNECTIONS (SEE NOTE 8 & 12)



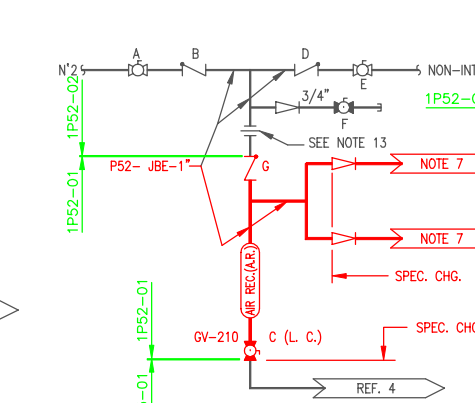
DETAIL NO. 18
TEMPORARY INTERRUPTIBLE AIR SOURCE



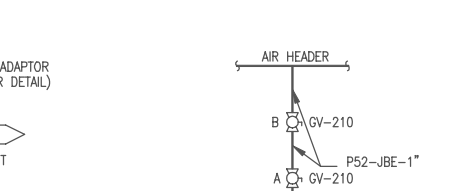
DETAIL NO. 19
INTERRUPTIBLE SERVICE VALVE CONNECTIONS (SEE NOTE 8)



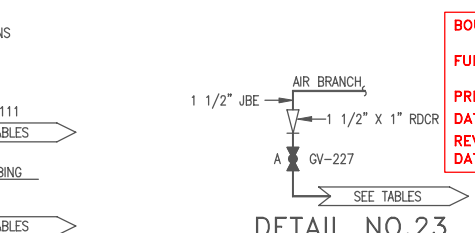
DETAIL NO. 20
APPLIES TO RECEIVER NO'S. P52-A014 & A015 (SEE NOTE 8)



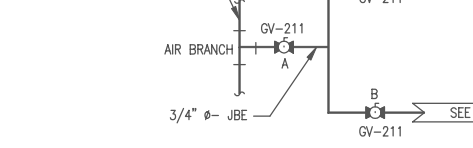
DETAIL NO. 21
APPLIES TO RECEIVER NO'S. P52-A032, A033, A034, A035 & A036 (SEE NOTE 8)



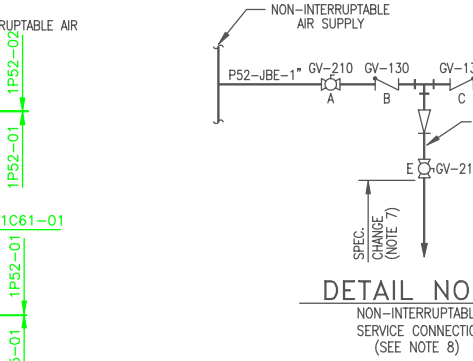
DETAIL NO. 22
INTERRUPTIBLE SERVICE VALVE CONNECTIONS (SEE NOTE 8)



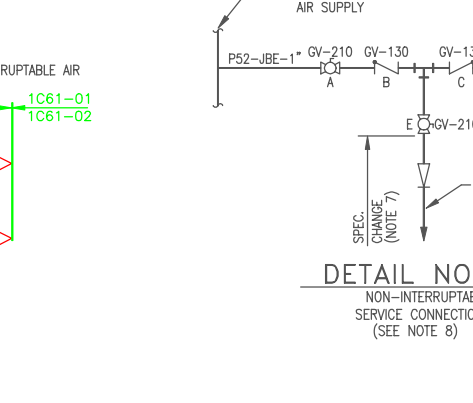
DETAIL NO. 23
INTERRUPTIBLE SERVICE VALVE CONNECTIONS (SEE NOTE 8)



DETAIL NO. 24
INTERRUPTIBLE SERVICE VALVE CONNECTIONS (SEE NOTE 8)



DETAIL NO. 25
NON-INTERRUPTIBLE SERVICE CONNECTION (SEE NOTE 8)



DETAIL NO. 26
NON-INTERRUPTIBLE SERVICE CONNECTION (SEE NOTE 8)



DETAIL NO. 27
INTERRUPTIBLE SERVICE VALVE CONNECTION (SEE NOTE 8)

BOUNDARY DIAGRAM NO.: 1P52-B01-02
FUNCTION(S) NO.: 1P52-01
PREPARED BY: WILLIAM P EVANS
DATE: 5/4/98
REVIEWED BY: M D STEPHENS
DATE: 5/5/98

Revision: A Date: 12-03-99
APPROVED, ISSUED PER LICENSE RENEWAL BOUNDARY PACKAGES. DRAWING CREATED FROM H-11667, REV.10; BY TRM.

LICENSE RENEWAL DOCUMENT

WORK THIS DWG. WITH H-16239 & H-16251

MPL NO. P52-1020 ACAD14 HL11667



LICENSE RENEWAL SCREENING FOR INFORMATION ONLY

EDWIN I. HATCH NUCLEAR PLANT UNIT No.1 REACTOR BUILDING INSTRUMENT AIR SYSTEM TABLES SHEET 2

DATE	SCALE	LOCATION	DOCUMENT NUMBER	REVISION
TRM	LCF	10-502	HL-11667	A
DATE	None			