

- NOTES:**
1. ALL EQUIPMENT MPL NUMBERS PRECEDED BY R43 UNLESS OTHERWISE NOTED.
  2. THIS DRAWING SHOWS EQUIPMENT ASSOCIATED WITH DIESEL 1A AND 1C. ALL OF THE EQUIPMENT IS THE SAME EXCEPT FOR EQUIPMENT MPL NUMBERS THE 1C DIESEL HAS 'C' FOLLOWING ALL MPL No.'s EXAMPLE  
DIESEL A MPL No. R43-S001A  
DIESEL C MPL No. R43-S001C
  3. ALL EQUIPMENT IS PROVIDED BY FAIRBANKS MORSE UNLESS OTHERWISE NOTED WITH AN ASTERISK (\*). ALL PIPING EXTERNAL TO DIESEL SKID TO BE BY PIPING CONTRACTOR.
  4. EQUIPMENT MOUNTED ON DIESEL SKID
  5. [ ] FAIRBANKS MORSE DESIGNATIONS FOR EQUIPMENT.
  6. VALVES F002B AND F003B ARE CLOSED AND CAPPED.
  7. PRESSURE SWITCH SUFFIXED BY "E" ON DIESEL "1C".
  8. PRESSURE SWITCH SUFFIXED BY "F" ON DIESEL "1C".
  9. THIS DRAWING ORIGINATED FROM VENDOR DRAWINGS S-13637 THRU S-13641.

**REFERENCES:**

TITLE	MPL_NO.	DWG_NO
1. PIPING AND INSTRUMENT SYMBOLS	A42-1010	S-15051
2. SERVICE WATER AT DIESEL GEN. P&ID	H-11600	SHEET 2.
3. DEMINERALIZED WATER SYSTEM P&ID	H-11038	SHEET 2.
4. FUEL OIL SYSTEM P&ID	H-11037	SHEET 1.
5. P&ID DIESEL GEN. 1A & 1C	H-11631	SHEET 2.
6. P&ID DIESEL GEN. 1B	H-11638	SHEET 1.
7. P&ID DIESEL GEN. 1B	H-11638	SHEET 2.

**BOUNDARY DIAGRAM NO.: 1R43-B01-04**  
**FUNCTION(S) NO.: 1R43-01**  
**PREPARED BY: ALEX MORRISON**  
**DATE: 12/18/98**  
**REVIEWED BY: WILLIAM P EVANS**  
**DATE: 12/21/98**

**LICENSE RENEWAL DOCUMENT**  
 MPL NO. R43-1010 ACAD14 HL1163101

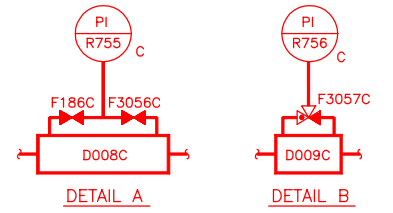
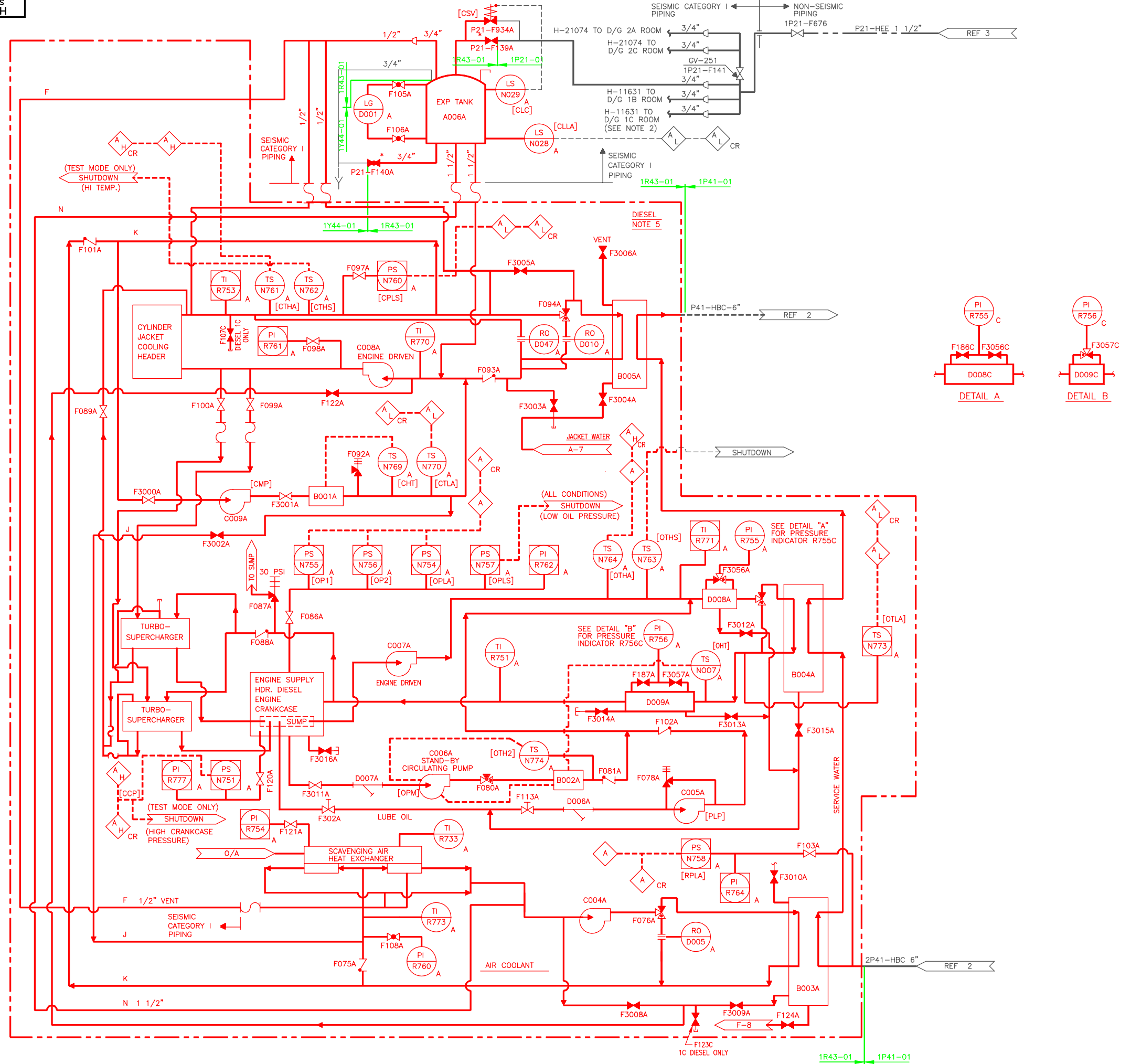
**SOUTHERN COMPANY**

**LICENSE RENEWAL SCREENING FOR INFORMATION ONLY**

EDWIN I. HATCH NUCLEAR PLANT UNIT No. 1  
 P & ID  
 DIESEL GENERATOR 1A & 1C  
 SHEET 1

Revision: A	Date: 11-19-99
APPROVED. ISSUED PER LICENSE RENEWAL BOUNDARY PACKAGES. DRAWING CREATED FROM H-11631 SH.1, REV.21; BY IRM.	
BY: TRM	DATE: MDS
CHKD: LCF	APPV: ASK

DRAWN	DESIGNED	LOCATION	DOCUMENT NUMBER	REVISION
TRM	None	10-502	HL-11631	A
SCALE	None		SHEET 1	



13 12 11 10 9 8 7 6 5 4 3 2 1

13 12 11 10 9 8 7 6 5 4 3 2 1

J  
H  
G  
F  
E  
D  
C  
B  
A

J  
H  
G  
F  
E  
D  
C  
B  
A