

- NOZZLE WITH BAFFLE
- PRESSURE SWITCH
- REDUCER
- BALL VALVE (N.O.)
- EA-1 195 NOZZLE
- PRESSURE INDICATOR
- MONITOR SWITCH
- GATE VALVE
- GLOBE VALVE (N.C.)
- ANGLE VALVE (N.C.)
- CHECK VALVE
- FLOW DIRECTION
- STRAINER
- UNION
- SIDE OUTLET GLOBE VALVE
- RESTRICTIVE ORIFICE
- CAP
- INDICATING LIGHT
- ADDRESSABLE INTERFACE MODULE
- RETARD CHAMBER
- DRIP FUNNEL
- ALARM VALVE

NOTES:

1. THE DESIGN OF THIS WET PIPE SPRINKLER SYSTEM INCLUDES THE FOLLOWING HYDRAULIC DEMAND WHICH INCLUDES 250 GPM FOR INSIDE HOSE AND 750 GPM FOR OUTSIDE HOSE. DEMAND DENSITY OF 0.3 GPM/SQ. FT.
2. THIS SPRINKLER SYSTEM HAS SPRINKLER HEADS WITH 1/2" ORIFICE AT A TEMPERATURE RATING OF 212°F AND INCLUDES THE FOLLOWING TYPE AND QUANTITY: UPRIGHT, SSU-19 HEADS.
3. ALL MPL NUMBERS ARE PRECEDED BY 1Z43 OTHERWISE NOTED.

REFERENCES:

- B-11977 FIRE PROTECTION FCD, RPS ROOM AND VERTICAL CABLEWAY, 1Z43130W12
- H-11034 FIRE PROTECTION P&ID - REACTOR RADWASTE BUILDINGS
- H-11882 EQUIPMENT LAYOUT DRAWINGS, FIRE DETECTION SUPPRESSION MULTIPLEX SYSTEM 1Z43 CONTROL BUILDING EL. 190'-0"

BOUNDARY DIAGRAM NO.: 1X43-B01-12
 FUNCTION(S) NO.: 1X43-04
 1X43-06
 PREPARED BY: M D STEPHENS
 DATE: 2/5/98
 REVIEWED BY: ALEX MORRISON
 DATE: 7/13/98

LICENSE RENEWAL DOCUMENT

MPL NO. 1Z43 ACAD14 HL11325

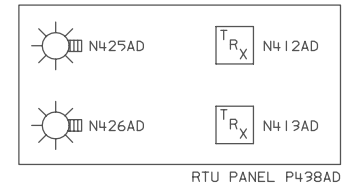
SOUTHERN COMPANY

LICENSE RENEWAL SCREENING FOR INFORMATION ONLY

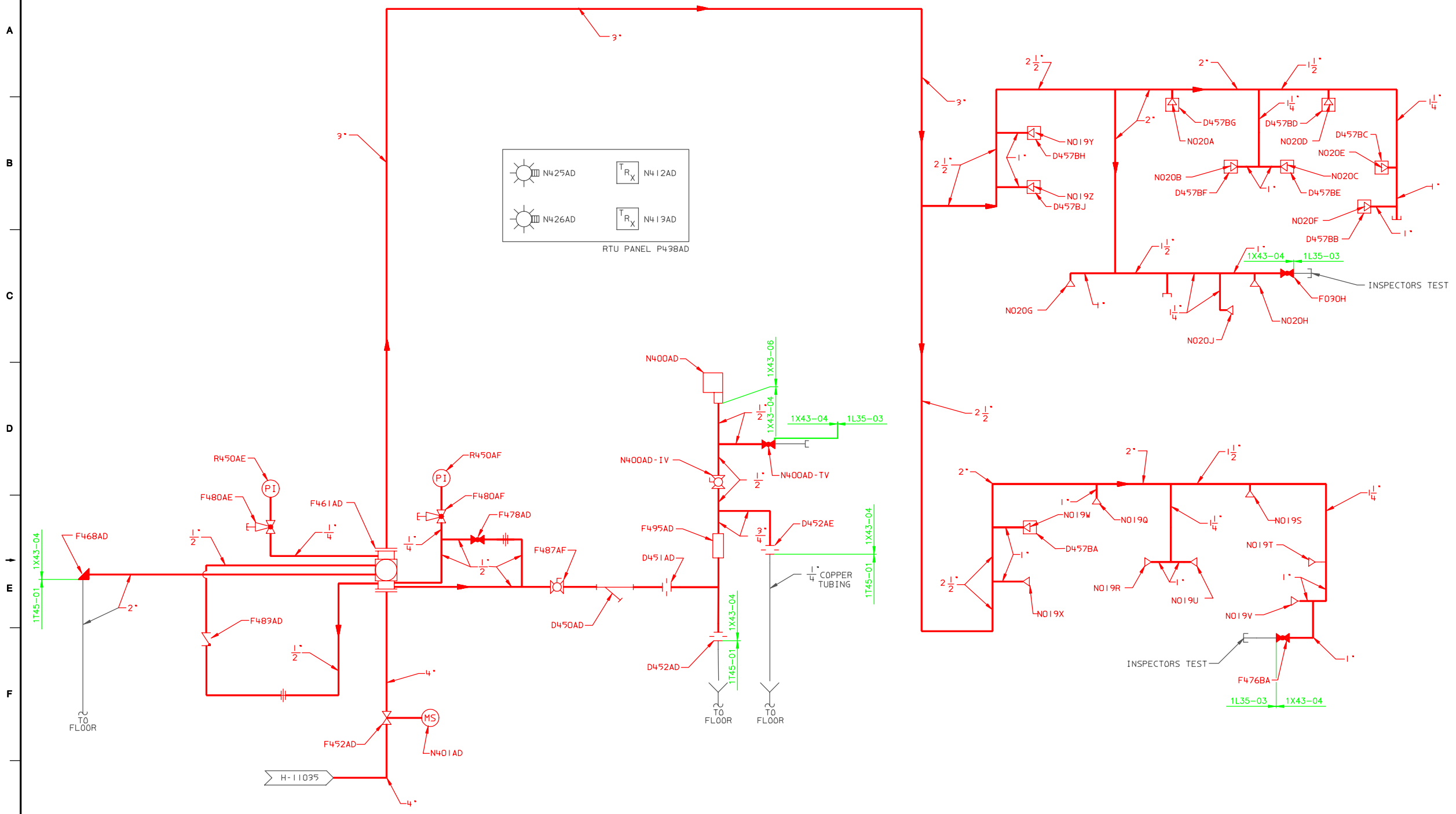
EDWIN I. HATCH NUCLEAR PLANT
 UNITS 1 & 2
 FIRE PROTECTION P&ID -
 RPS ROOMS & CORRIDORS

BY	CHK'D	APPR'D	LOCATION	DOCUMENT NUMBER	REVISION
TRM	LCF				
DATE	SCALE		10-502	HL-11325	A

Revision: A Date: 10-26-99
 APPROVED, ISSUED PER LICENSE RENEWAL BOUNDARY PACKAGES. DRAWING CREATED FROM H-11325, REV.13; BY TRM.



SYSTEM NO. 1Z43130W12
 RPS ROOM AND VERTICAL CABLEWAY
 FLOOR EL. 190'-0"



A
B
C
D
E
F
G
H
J

A
B
C
D
E
F
G
H
J